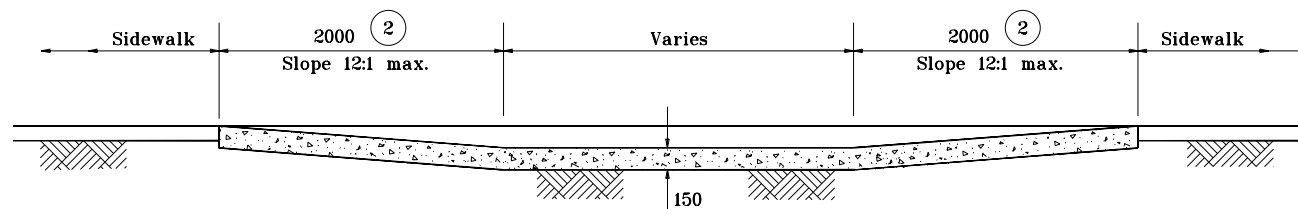
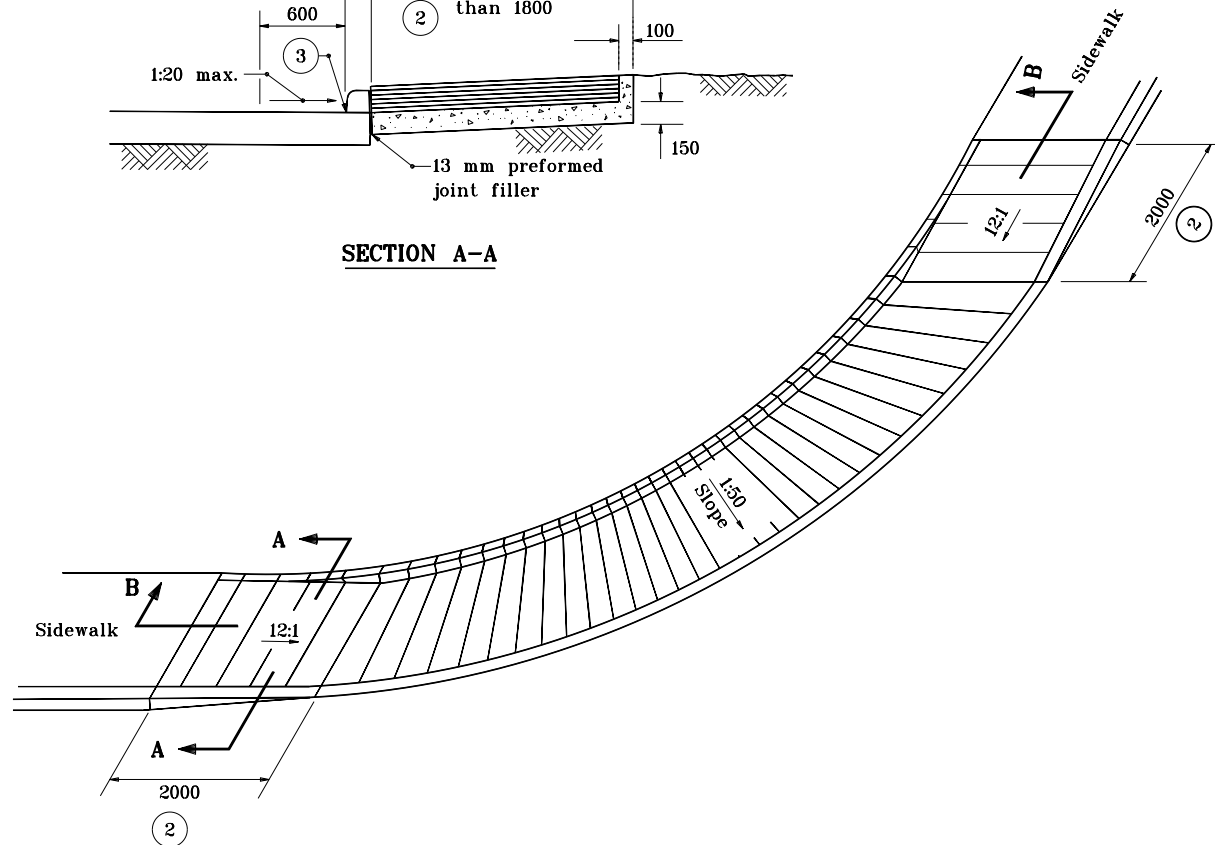


SECTION A-A



SECTION B-B

GENERAL NOTES

1. Curb ramp type F shall not be used on new construction, but only when field conditions warrant for existing sidewalk alterations.

2 These dimensions are based on a 150 mm curb height, and shall be proportionally adjusted for other curb heights.

3 The bottom edge of the curb ramp shall be flush with the edge of the adjacent pavement and gutter line.

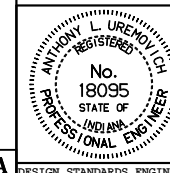
All dimensions are in mm unless otherwise specified.

INDIANA DEPARTMENT OF TRANSPORTATION

CURB RAMP TYPE F

APRIL 1995

STANDARD DRAWING NO. 604-SWCR-08



/s/ Anthony L. Uremovich 4-03-95
DESIGN STANDARDS ENGINEER DATE

/s/ Donald W. Lucas 4-03-95
CHIEF HIGHWAY ENGINEER DATE

Source Sheet: MA1A