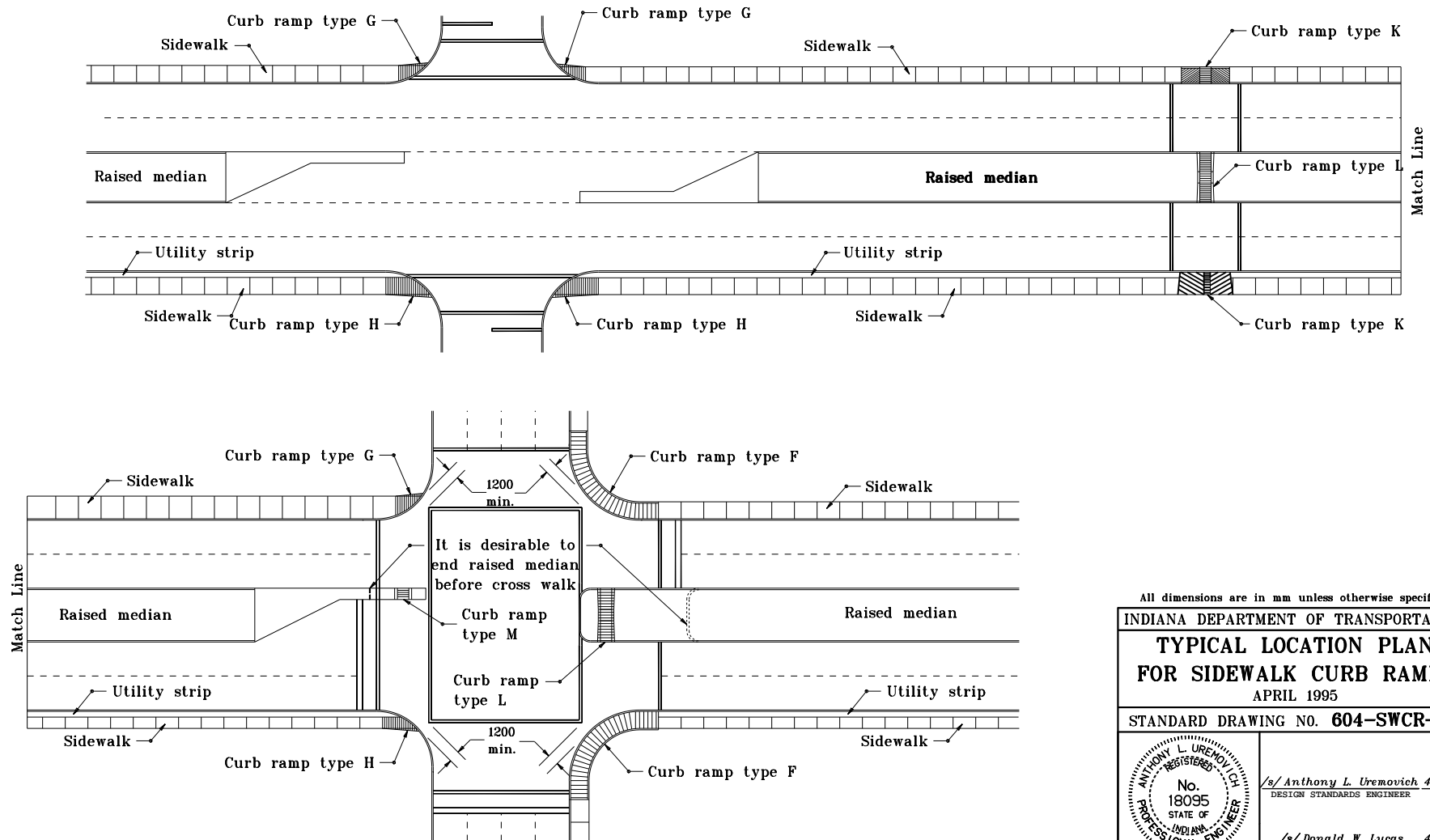


# **GENERAL NOTES**

1. The curb ramp includes the ramp, flared sides, and warped or rolled edge as indicated by the hatched lines on the details.
2. Curb ramps shall be specified by the appropriate type where there is an existing or proposed sidewalk at street intersections, across driveways, and across alleys. Refer to 604-SWCR-13 and 604-SWCR-14 for curb ramp details at driveways.



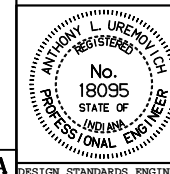
All dimensions are in mm unless otherwise specified.

INDIANA DEPARTMENT OF TRANSPORTATION

## **TYPICAL LOCATION PLAN FOR SIDEWALK CURB RAMPS**

APRIL 1995

STANDARD DRAWING NO. **604-SWCR-02**



/s/ Anthony L. Uremovich 4-03-95  
DESIGN STANDARDS ENGINEER DATE

/s/ Donald W. Lucas 4-03-95  
CHIEF HIGHWAY ENGINEER DATE

Source Sheet: **MA1A**