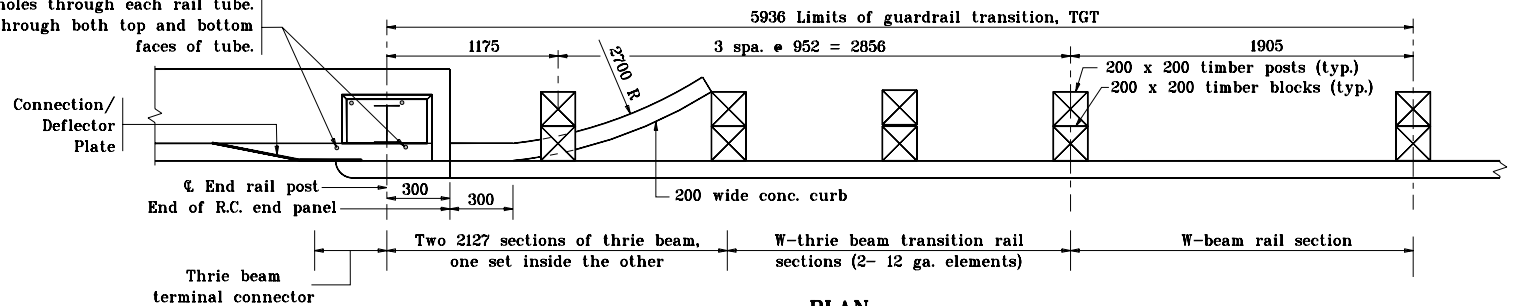
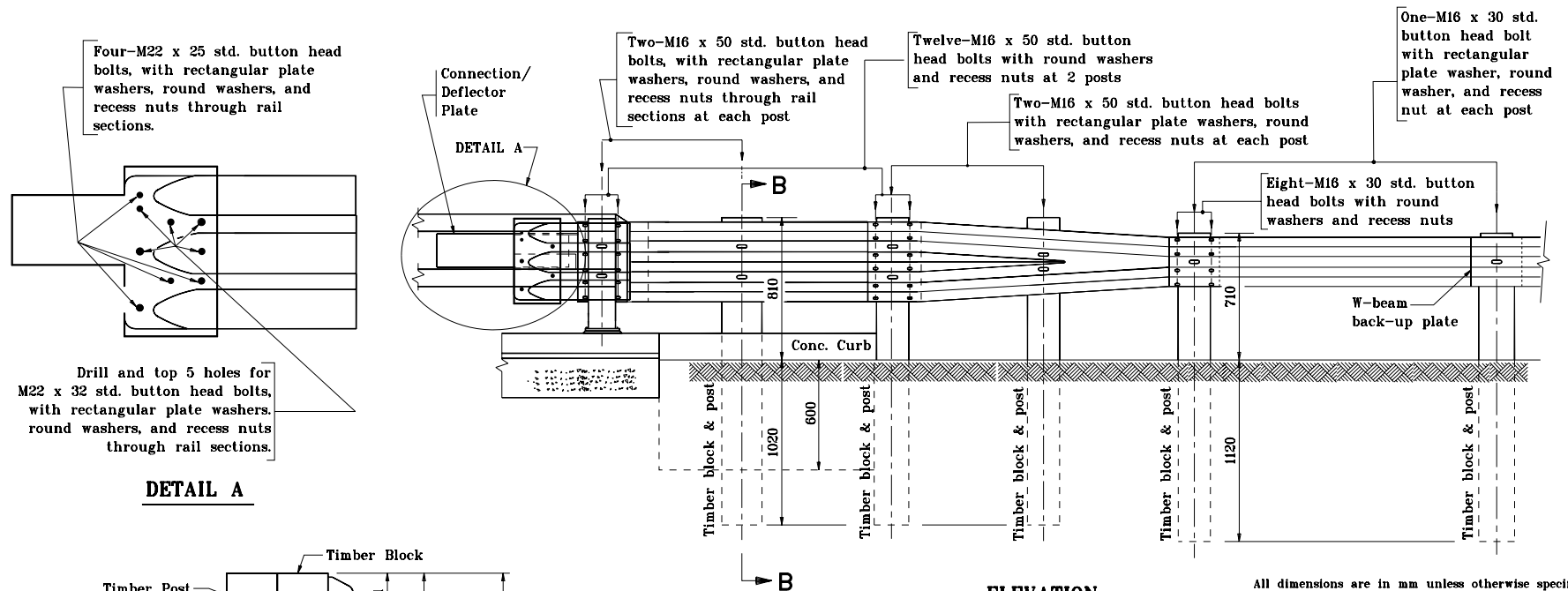


2-24 ϕ holes through each rail tube.
Extend through both top and bottom
faces of tube.



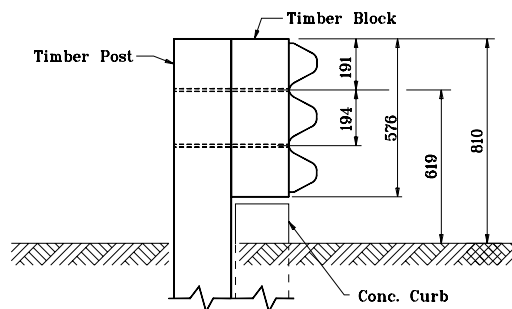
PLAN



ELEVATION

DETAIL A

Drill and tap 5 holes for
M22 x 32 std. button head bolts,
with rectangular plate washers,
round washers, and recess nuts
through rail sections.



SECTION B - B

NOTES:

1. See Standard Drawing 601-TBGC-01, 02 for thrie beam transition details.
2. See Standard Drawing 601-TTGT-02 for transition connection detail, timber post detail and timber block detail.

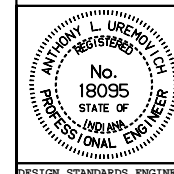
All dimensions are in mm unless otherwise specified.

INDIANA DEPARTMENT OF TRANSPORTATION

GUARDRAIL TRANSITION, TGT

MAY 2000

STANDARD DRAWING NO. **601-TTGT-01**



/s/ Anthony L. Uremovich 5-01-00
DESIGN STANDARDS ENGINEER DATE

/s/ Firooz Zandi 5-01-00
CHIEF HIGHWAY ENGINEER DATE

DESIGN STANDARDS ENGINEER