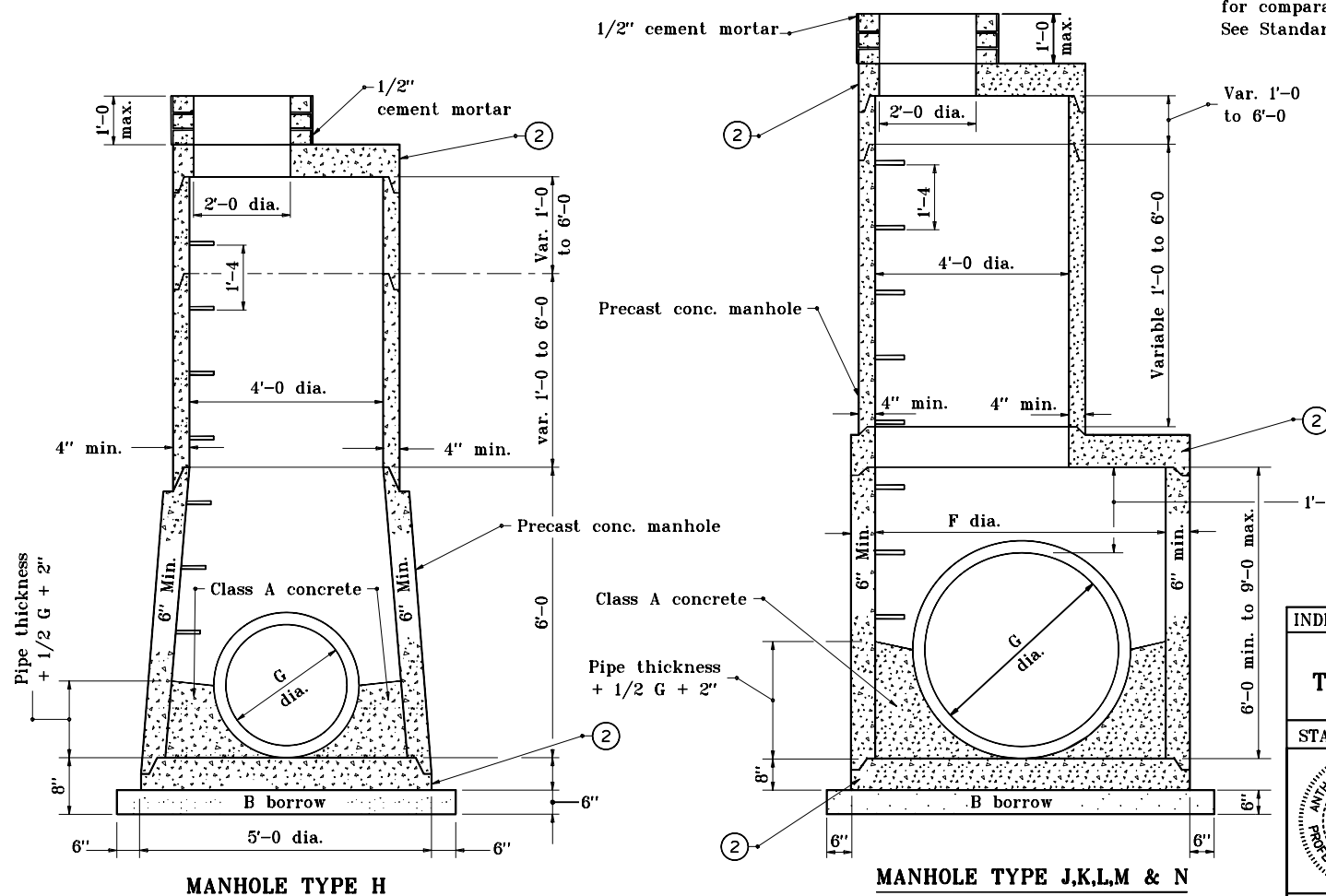


MANHOLE PIPE SIZES				
Type	G (in.)	F (ft. in.)	Maximum Pipe Size Relative to Mainline (in.)	Maximum Pipe Size for Mainline (in.)
H	24 to 36	—	30	36
J	24 to 36	5'-0	30	36
K	36 to 48	6'-0	36	48
L	48 to 54	8'-0	48	54
M	54 to 72	8'-6	66	72
N	72 to 84	9'-0	72	84

GENERAL NOTES

- Drop pipe may be used with manholes Type H thru N and shall be referred to as drop manhole type H through N. For details of construction see Standard Drawing E 720-MHST-03.
- See Standard Drawing E 720-MHST-06 for Details A, B, and C.
- The contractor will be permitted to substitute manholes type C through F for manholes type H through N for comparable pipe sizes. See Standard Drawings E 720-MHST-02 and -04.



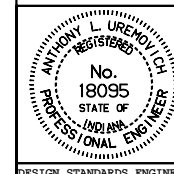
INDIANA DEPARTMENT OF TRANSPORTATION

MANHOLES

TYPE H, J, K, L, M, AND N

JANUARY 1997

STANDARD DRAWING NO. E 720-MHST-05



DETAILS PLACED IN THIS FORMAT 11-15-99

/s/ Anthony L. Uremovich 11-15-99
DESIGN STANDARDS ENGINEER DATE

/s/ Firooz Zandi 11-15-99
CHIEF HIGHWAY ENGINEER DATE

DESIGN STANDARDS ENGINEER

ORIGINALLY APPROVED 1-02-97