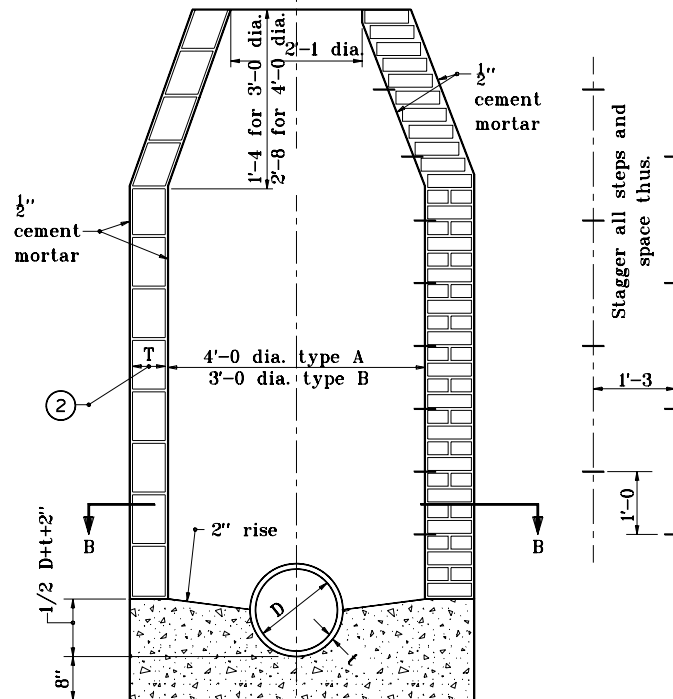


SECTION B-B



SECTION A-A

TYPE A
Dia. = 4'-0"

TYPE B
Dia. = 3'-0"

GENERAL NOTES

1. Precast manhole type C maybe substituted for manhole type A or B.

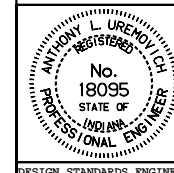
- ② T = 8" for brick structure
T = 6" for segmental block structure

INDIANA DEPARTMENT OF TRANSPORTATION

MANHOLES TYPE A AND B

APRIL 1995

STANDARD DRAWING NO. E 720-MHST-01



DETAILS PLACED IN THIS FORMAT 11-15-99

/s/ Anthony L. Uremovich 11-15-99
DESIGN STANDARDS ENGINEER DATE

/s/ Firooz Zandi 11-15-99
CHIEF HIGHWAY ENGINEER DATE

DESIGN STANDARDS ENGINEER

ORIGINALLY APPROVED 4-03-95