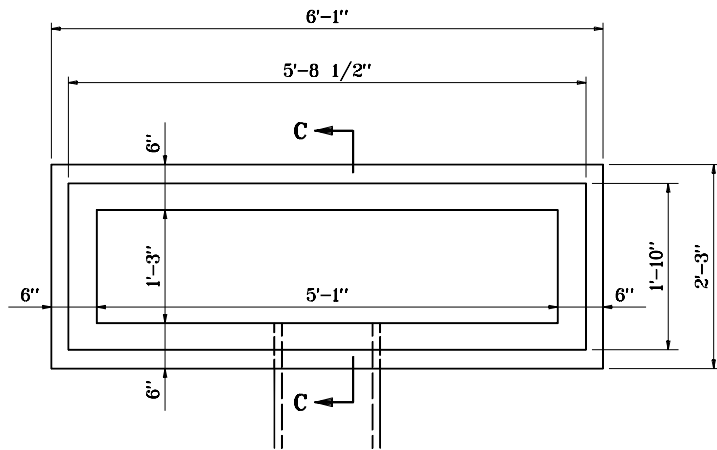
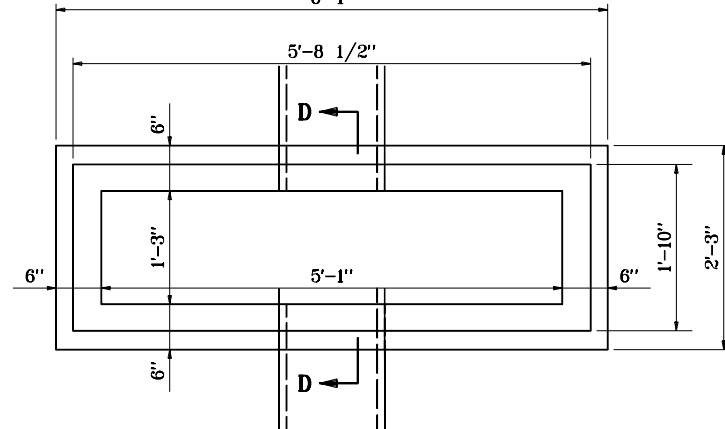


GENERAL NOTES

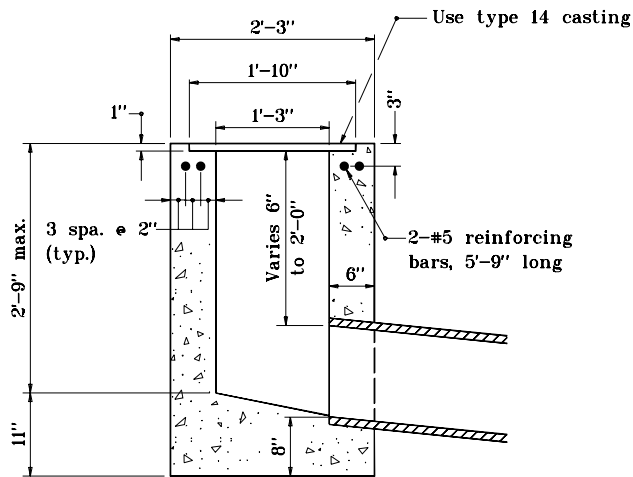
① See Standard Drawing E 720-ICCA-15 for casting type 14 details.
6'-1"



PLAN

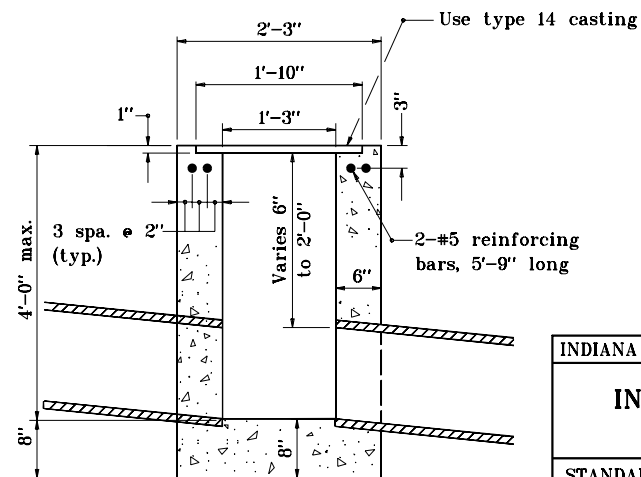


PLAN



SECTION C-C

TYPE S ②



SECTION D-D

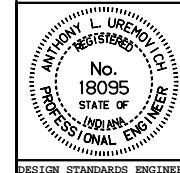
TYPE T ②

INDIANA DEPARTMENT OF TRANSPORTATION

INLETS TYPE S AND T

SEPTEMBER 1997

STANDARD DRAWING NO. E 720-INST-10



DETAILS PLACED IN THIS FORMAT 11-15-99

/s/ Anthony L. Uremovich 11-15-99
DESIGN STANDARDS ENGINEER DATE

/s/ Firooz Zandi 11-15-99
CHIEF HIGHWAY ENGINEER DATE

DESIGN STANDARDS ENGINEER

ORIGINALLY APPROVED 9-01-97