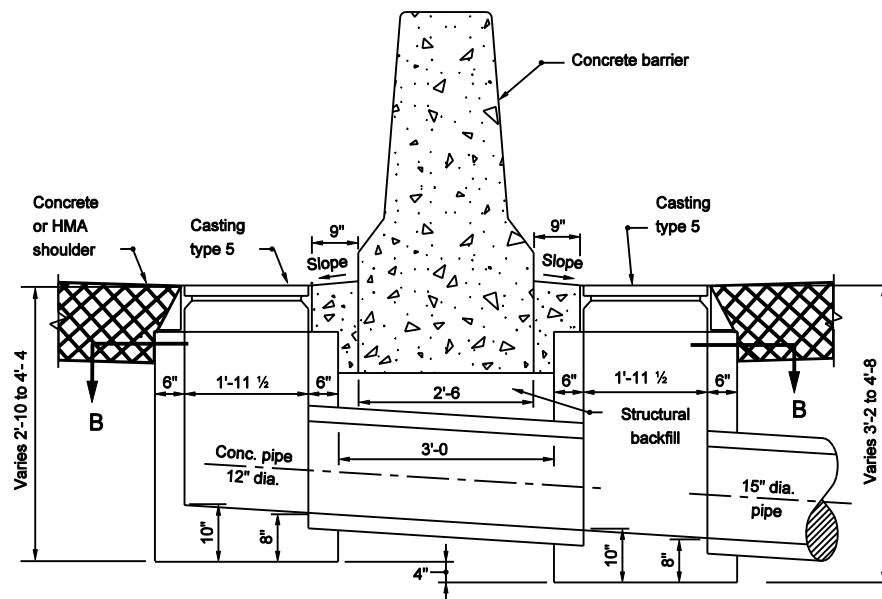


PLAN



SECTION A-A

NOTES:

1. Each inlet Type H includes two boxes, the connector pipe between the inlet boxes, and two type 5 castings.
2. See Standard Drawing E 720-ICCA-01 through -03 for casting type 5 details.

INDIANA DEPARTMENT OF TRANSPORTATION	
INLET TYPE H	
MARCH 2003	
STANDARD DRAWING NO. E 720-INST-05A	
	/s/ Richard L. VanCleave DESIGN STANDARDS ENGINEER DATE 3-03-03
	/s/ Richard K. Smutzer CHIEF HIGHWAY ENGINEER DATE 3-03-03
DESIGN STANDARDS ENGINEER	