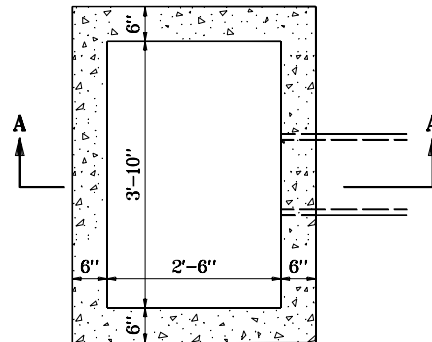
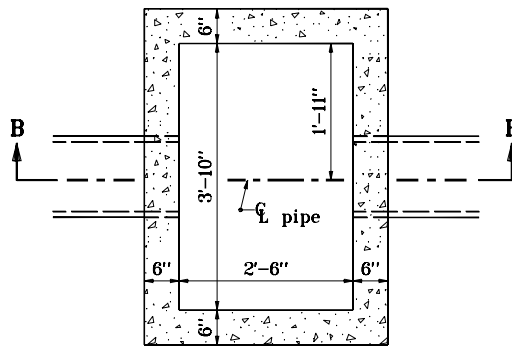


# **GENERAL NOTES**

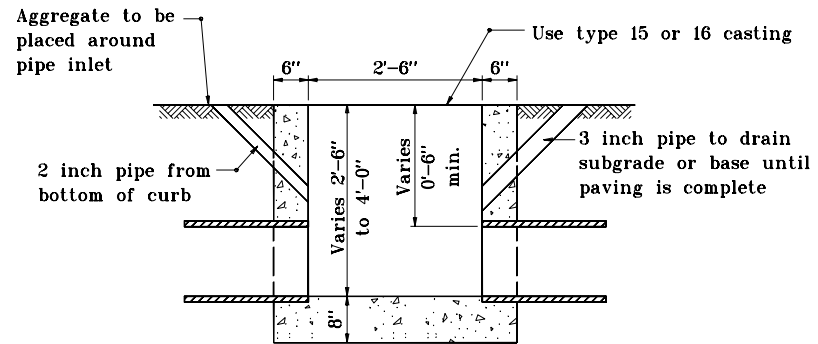
- See Standard Drawings E 720-ICCA-16 through -21 for castings type 15 and 16 details.



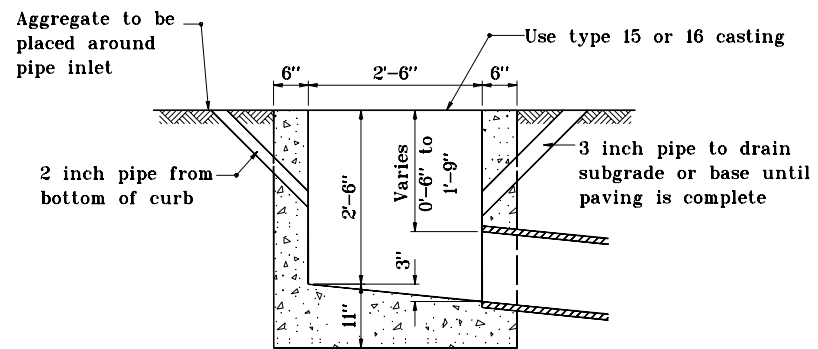
**PLAN**



**PLAN**



**SECTION B-B**



**SECTION A-A**

INDIANA DEPARTMENT OF TRANSPORTATION	
INLETS TYPE B AND C	
APRIL 1995	
STANDARD DRAWING NO. E 720-INST-02	
DETAILS PLACED IN THIS FORMAT 11-15-99	
	/s/ Anthony L. Uremovich 11-15-99 DESIGN STANDARDS ENGINEER DATE
	/s/ Firooz Zandi 11-15-99 CHIEF HIGHWAY ENGINEER DATE
	ORIGINALLY APPROVED 4-03-95