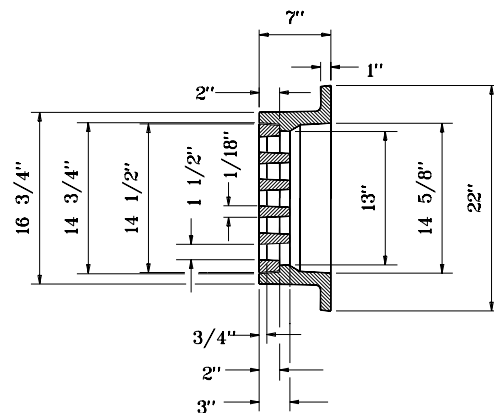
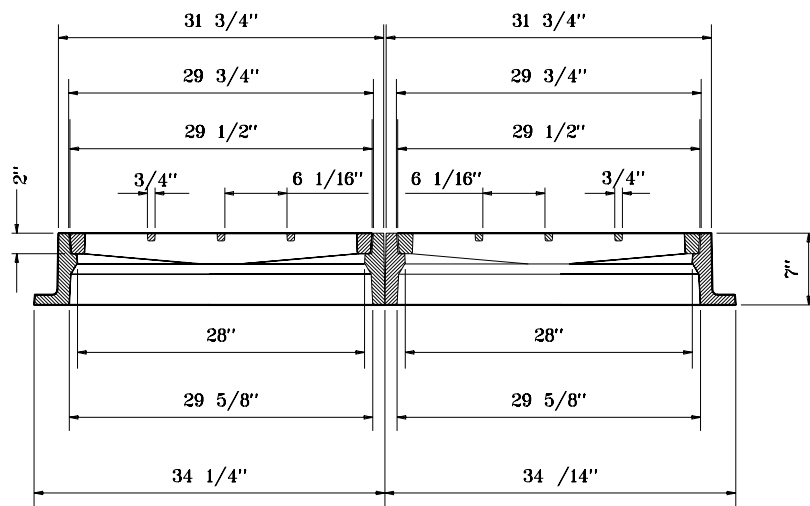


PLAN



SECTION B-B



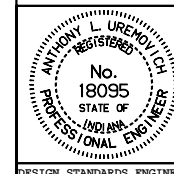
SECTION A-A

**FRAME AND GRATE
CASTING TYPE 14**

INDIANA DEPARTMENT OF TRANSPORTATION

**CASTING TYPE 14
FRAME AND GRATE**
SEPTEMBER 1998

STANDARD DRAWING NO. **E 720-ICCA-15**



DETAILS PLACED IN THIS FORMAT 11-15-99

/s/ Anthony L. Uremovich 11-15-99
DESIGN STANDARDS ENGINEER DATE

/s/ Firooz Zandi 11-15-99
CHIEF HIGHWAY ENGINEER DATE

DESIGN STANDARDS ENGINEER

ORIGINALLY APPROVED 9-01-98