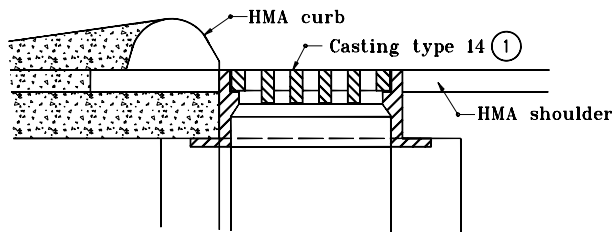
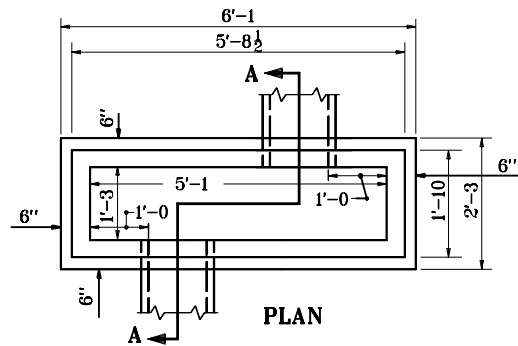


GENERAL NOTES

① See Standard Drawing 7 E20-ICCA-15 for casting type 14 details.

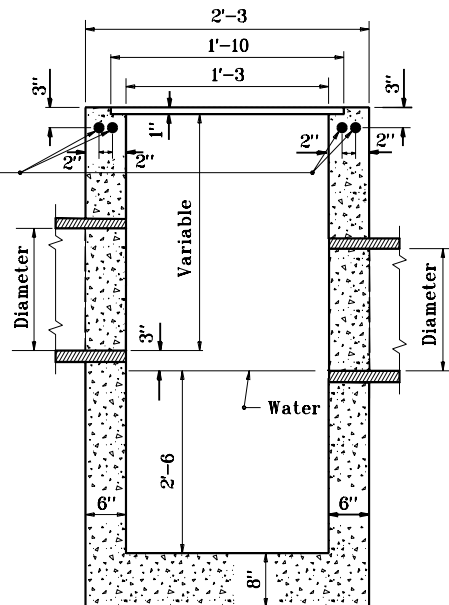


**PLACEMENT DETAIL FOR
TYPE 14 CASTING**



CATCH BASIN TYPE S

2 - #5 x 5'-9 (epoxy coated)



SECTION A-A

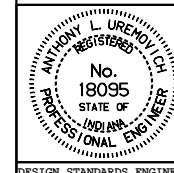
INDIANA DEPARTMENT OF TRANSPORTATION

CATCH BASIN

TYPE S

SEPTEMBER 1997

STANDARD DRAWING NO. **E 720-CBST-07**



DETAILS PLACED IN THIS FORMAT 11-15-99

/s/ Anthony L. Uremovich 11-15-99
DESIGN STANDARDS ENGINEER DATE

/s/ Firooz Zandi 11-15-99
CHIEF HIGHWAY ENGINEER DATE

DESIGN STANDARDS ENGINEER

ORIGINALLY APPROVED 9-02-97