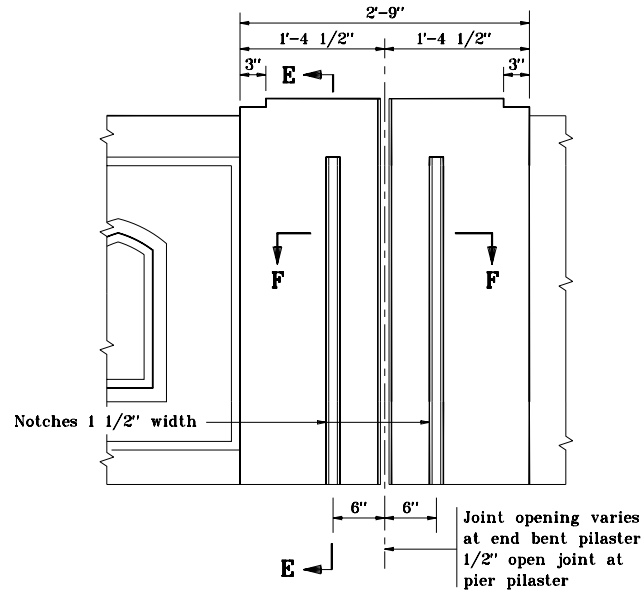
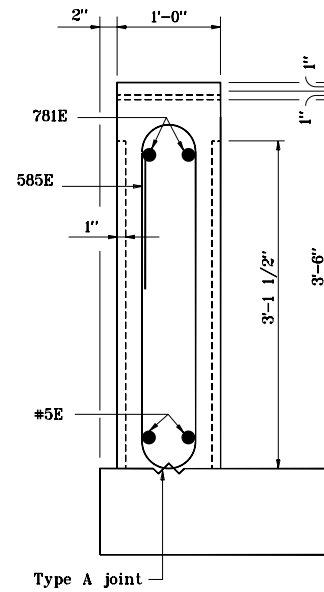


# NOTES

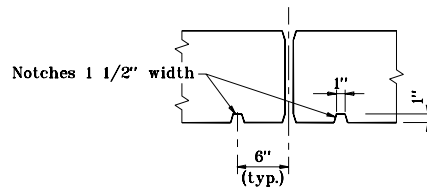
1. All reinforcing bars designated "E" shall be epoxy coated.
2. See standard Drawing E 706-BRTX-03 for bar bending details.



**ELEVATION**



**SECTION E-E**



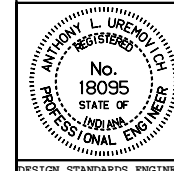
**SECTION F-F**

INDIANA DEPARTMENT OF TRANSPORTATION

**RAILING, TX**  
**(Pier or End Bent Pilaster)**

MAY 2000

STANDARD DRAWING NO. **E 706-BRTX-04**



/s/ Anthony L. Uremovich 5-01-00  
DESIGN STANDARDS ENGINEER DATE

/s/ Firooz Zandi 5-01-00  
CHIEF HIGHWAY ENGINEER DATE

DESIGN STANDARDS ENGINEER