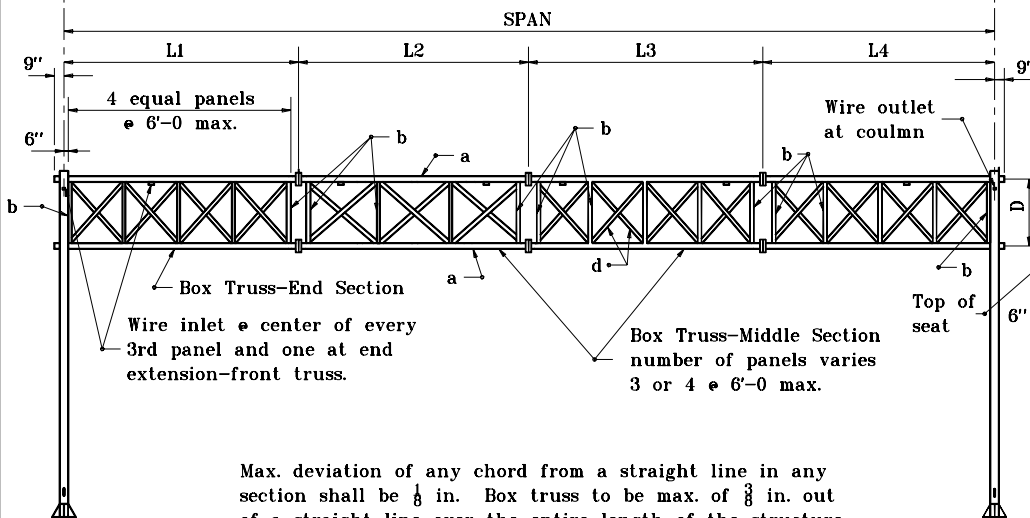


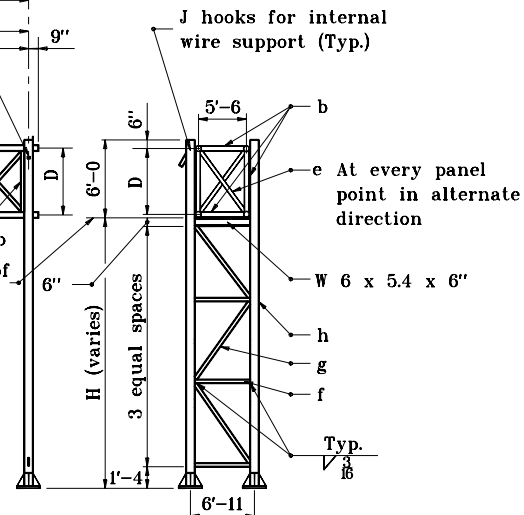
PLAN



ELEVATION
Facing Traffic

Max. deviation of any chord from a straight line in any section shall be $\frac{1}{8}$ in. Box truss to be max. of $\frac{3}{8}$ in. out of a straight line over the entire length of the structure in the vertical plane.

End internal diagonal (e) shall connect to the chord where the top horizontal diagonal connects to this chord as shown in plans and end elevation.



END ELEV.

| | |
|-------------------------------------------|------------------------------------------------------------------------------------------|
| INDIANA DEPARTMENT OF TRANSPORTATION | |
| SIGN STRUCTURE TRUSS | |
| ALUM. DETAILS | |
| SEPTEMBER 2001 | |
| STANDARD DRAWING NO. E 802-SNOH-01 | |
| | <i>/s/ Anthony L. Uremovich</i> 9-04-01 <small>DESIGN STANDARDS ENGINEER DATE</small> |
| | <i>/s/ Firooz Zandi</i> 9-04-01 <small>CHIEF HIGHWAY ENGINEER DATE</small> |
| <small>DESIGN STANDARDS ENGINEER</small> | |