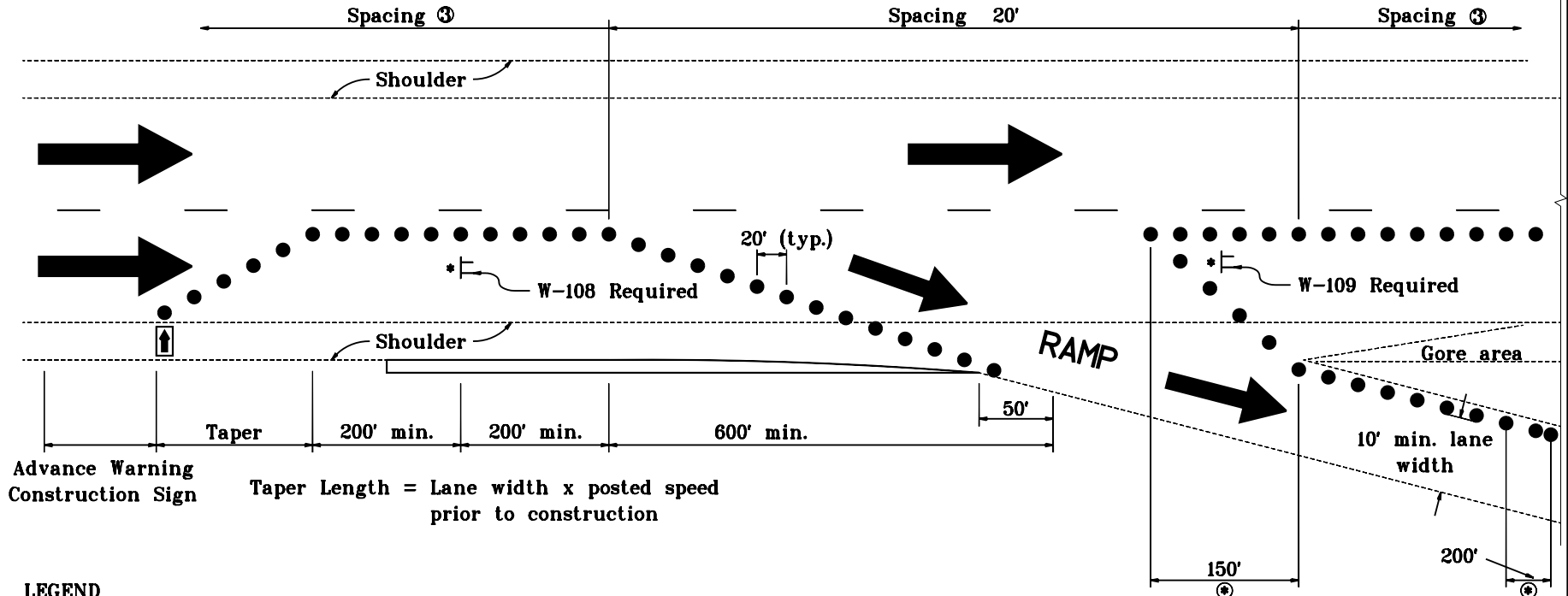


MULTI-LANE DIVIDED HIGHWAY

Median C

Match Line A



LEGEND

- * High intensity flashing light type B
- Cones for daytime operations
Drums for nighttime operations
- ◀ Flashing arrow sign

TRAFFIC MAINTENANCE PROCEDURE

1. The right lane shall be closed for the full length of the interchange before deceleration lane and/or gore area work begins.
2. Traffic shall be maintained on all exit and entrance ramps.
- ③ See Standard Drawing E 801-TCTLG-01 for cone and drum spacing.
4. Distances shown are approximate and may be adjusted as directed.

INDIANA DEPARTMENT OF TRANSPORTATION	
MAINTENANCE OF TRAFFIC FOR RPM CASTING REPLACEMENT	
MAY 2000	
STANDARD DRAWING NO. E 801-TCTC-07	
	/s/ Anthony L. Uremovich 5-01-00 DESIGN STANDARDS ENGINEER DATE
	/s/ Firooz Zandi 5-01-00 CHIEF HIGHWAY ENGINEER DATE