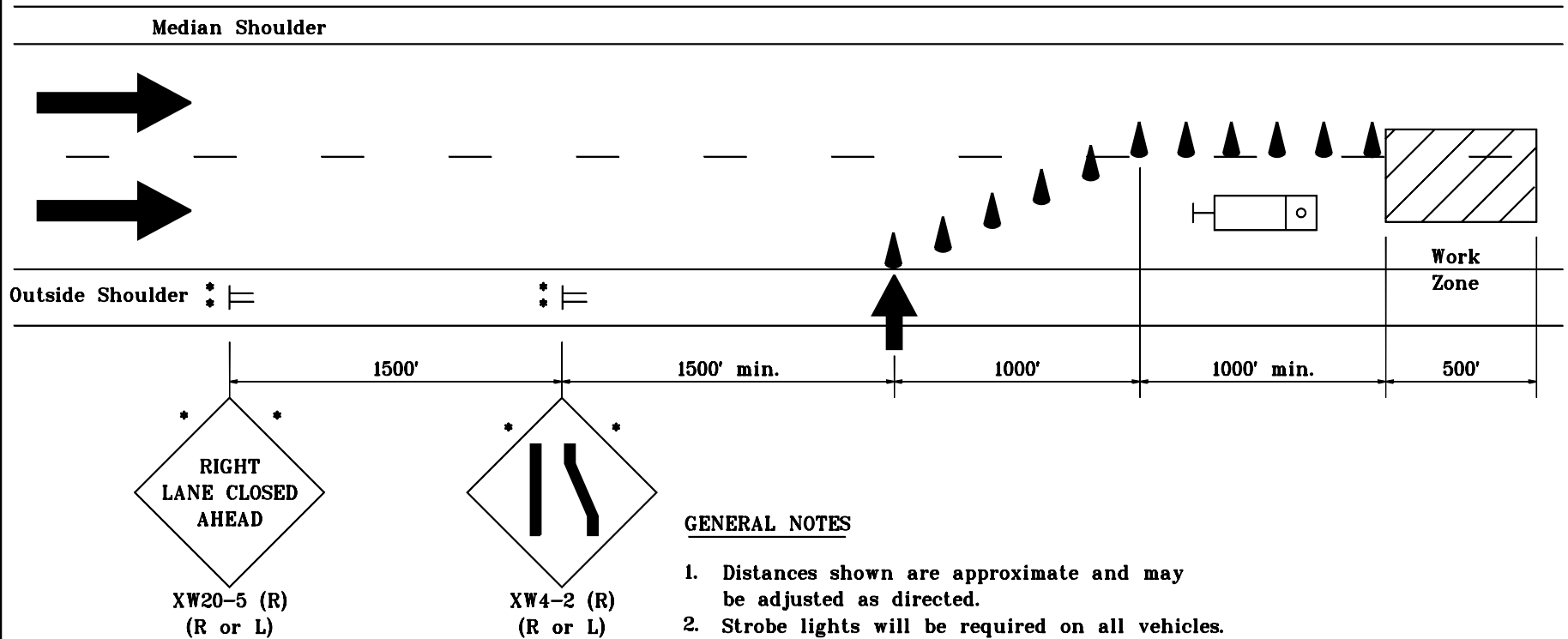


MULTI-LANE DIVIDED HIGHWAY



LEGEND



Flashing Arrow Sign

* High intensity flashing light type B.



Truck of 24,000 lb gross vehicular weight with truck mounted attenuator



Cone

INDIANA DEPARTMENT OF TRANSPORTATION	
MAINTENANCE OF TRAFFIC FOR RPM CASTING INSTALLATION	
MAY 2000	
STANDARD DRAWING NO. E 801-TCTC-06	
	/s/ Anthony L. Uremovich 5-01-00 DESIGN STANDARDS ENGINEER DATE
	/s/ Firooz Zandi 5-01-00 CHIEF HIGHWAY ENGINEER DATE