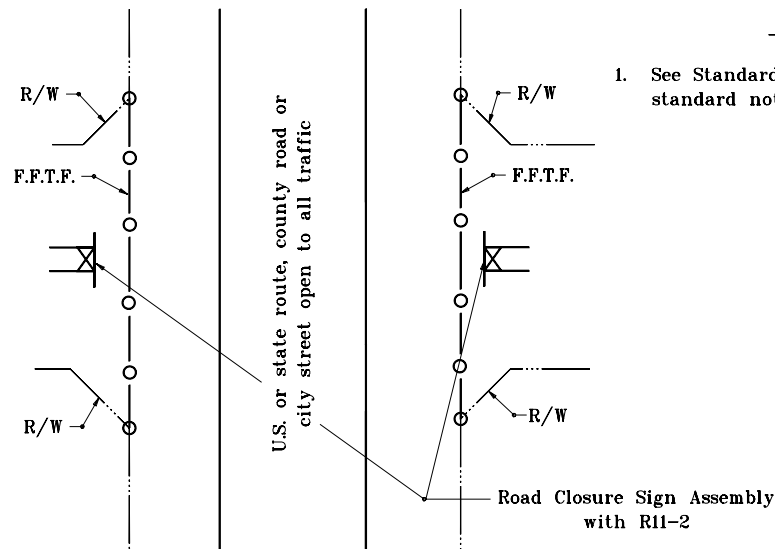
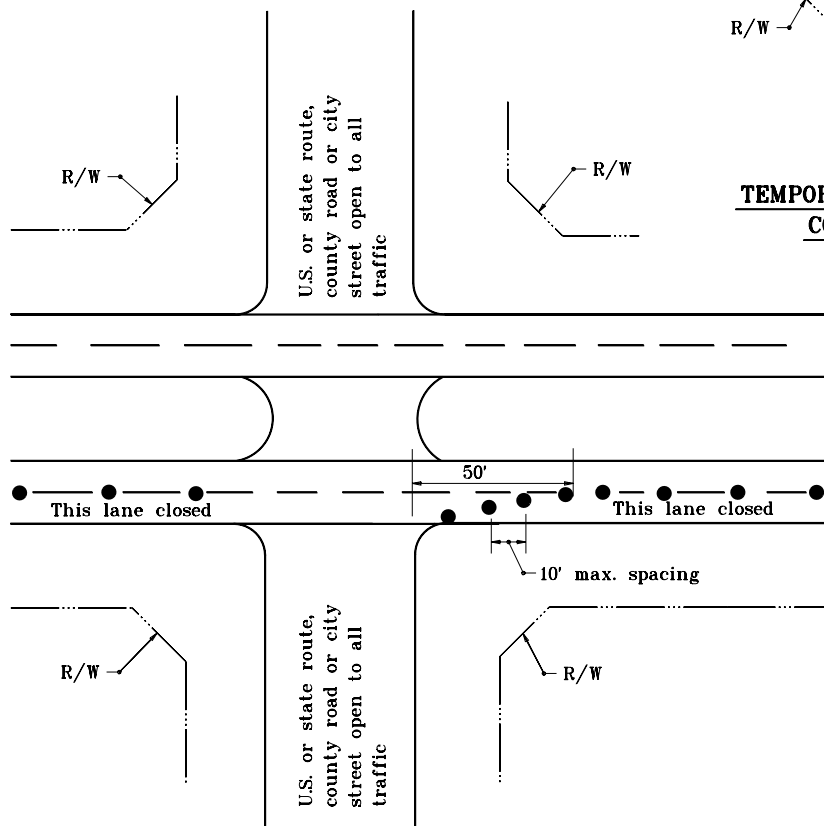


GENERAL NOTES

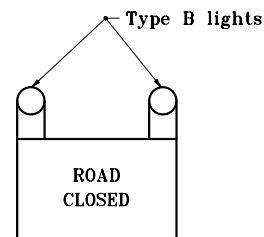
1. See Standard Drawing E 801-TCLG-01 for standard notes and legend.



TEMPORARY CLOSURE FOR PROJECT FOLLOWING COMPLETION OF GRADING CONTRACT



TEMPORARY CLOSURE OF A SINGLE LANE OF A DUAL LANE FACILITY



R 11-2

| | |
|--------------------------------------|--|
| INDIANA DEPARTMENT OF TRANSPORTATION | |
| TEMPORARY CLOSURES | |
| SEPTEMBER 1997 | |
| STANDARD DRAWING NO. E 801-TCTC-04 | |
| | DETAILS PLACED IN THIS FORMAT 11-15-99 /s/ Anthony L. Uremovich 11-15-99 DESIGN STANDARDS ENGINEER DATE /s/ Firooz Zandi 11-15-99 CHIEF HIGHWAY ENGINEER DATE ORIGINALLY APPROVED 9-01-97 |