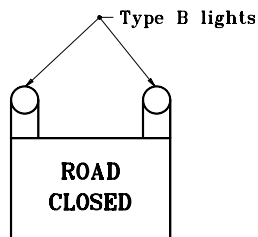
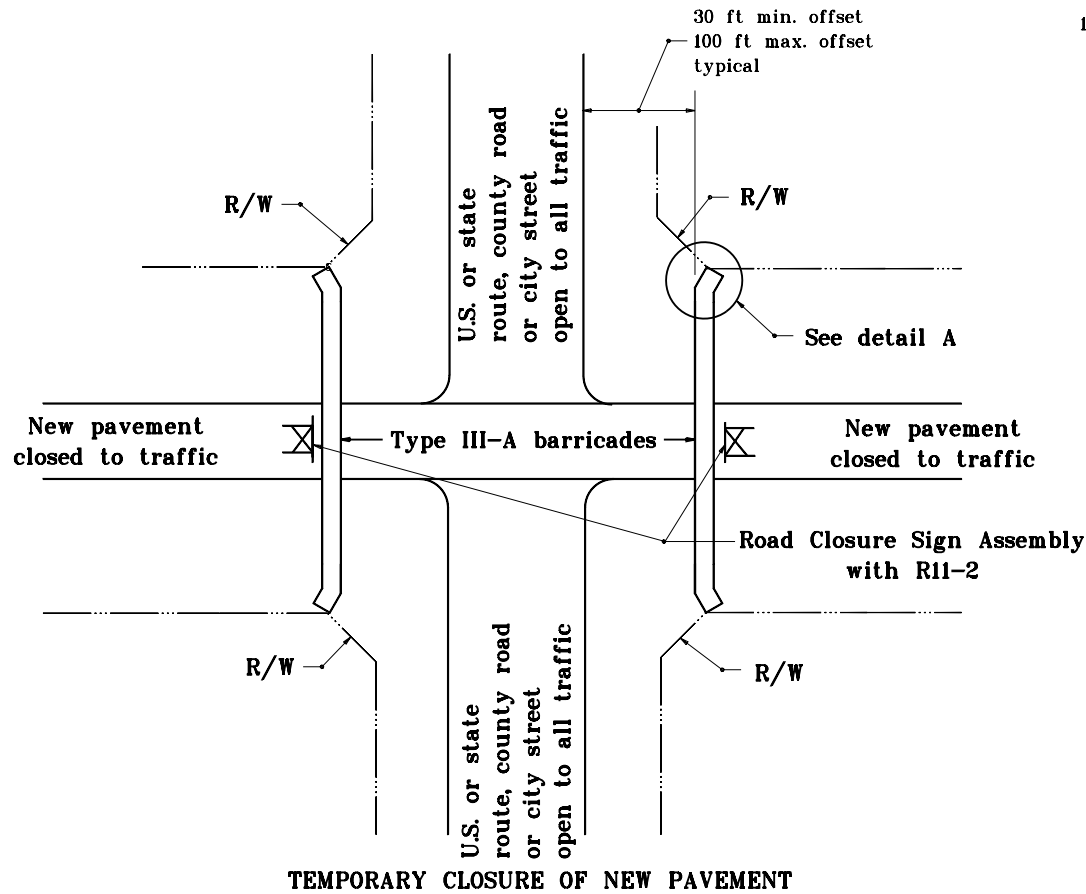
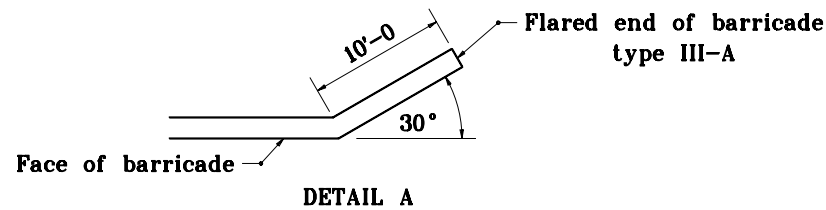


## GENERAL NOTES

- See Standard Drawing E 801-TCLG-01 for standard notes and legend.



R 11-2

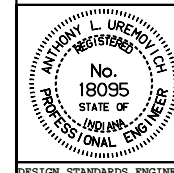


INDIANA DEPARTMENT OF TRANSPORTATION

## TEMPORARY CLOSURES

JUNE 1995

STANDARD DRAWING NO. E 801-TCTC-03



DETAILS PLACED IN THIS FORMAT 11-15-99

/s/ Anthony L. Uremovich 11-15-99  
DESIGN STANDARDS ENGINEER DATE

/s/ Firooz Zandi 11-15-99  
CHIEF HIGHWAY ENGINEER DATE

DESIGN STANDARDS ENGINEER

ORIGINALLY APPROVED 7-03-95