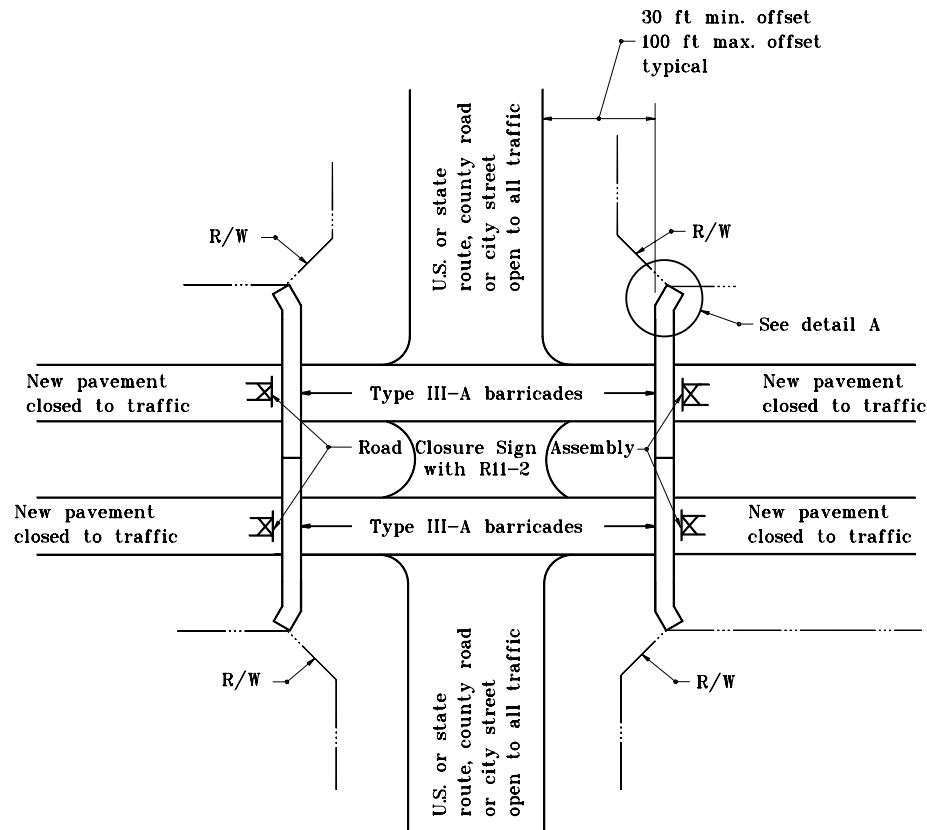
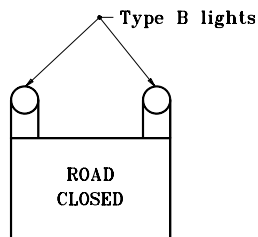


GENERAL NOTES

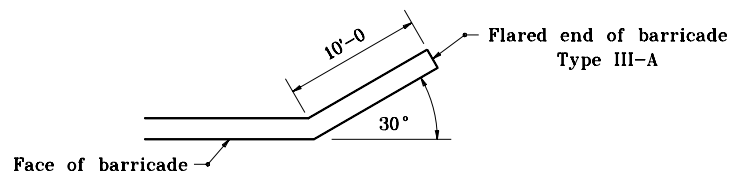
- See Standard Drawing E 801-TCLG-01 for standard notes and legend.



TEMPORARY CLOSURE OF BOTH NEW LANES OF PAVEMENT OF A DUAL LANE FACILITY



R 11-2



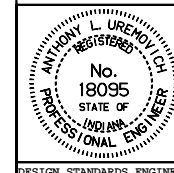
DETAIL A

INDIANA DEPARTMENT OF TRANSPORTATION

TEMPORARY CLOSURES

JUNE 1995

STANDARD DRAWING NO. E 801-TCTC-01



DETAILS PLACED IN THIS FORMAT 11-15-99

/s/ Anthony L. Uremovich 11-15-99
DESIGN STANDARDS ENGINEER DATE

/s/ Firooz Zandi 11-15-99
CHIEF HIGHWAY ENGINEER DATE

DESIGN STANDARDS ENGINEER

ORIGINALLY APPROVED 7-03-95