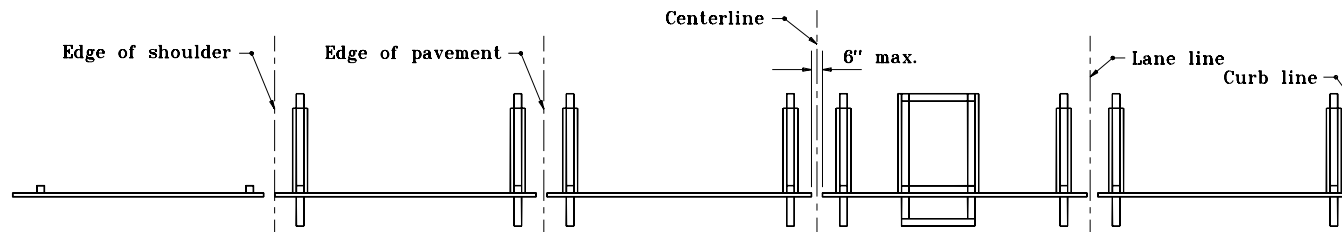


GENERAL NOTES

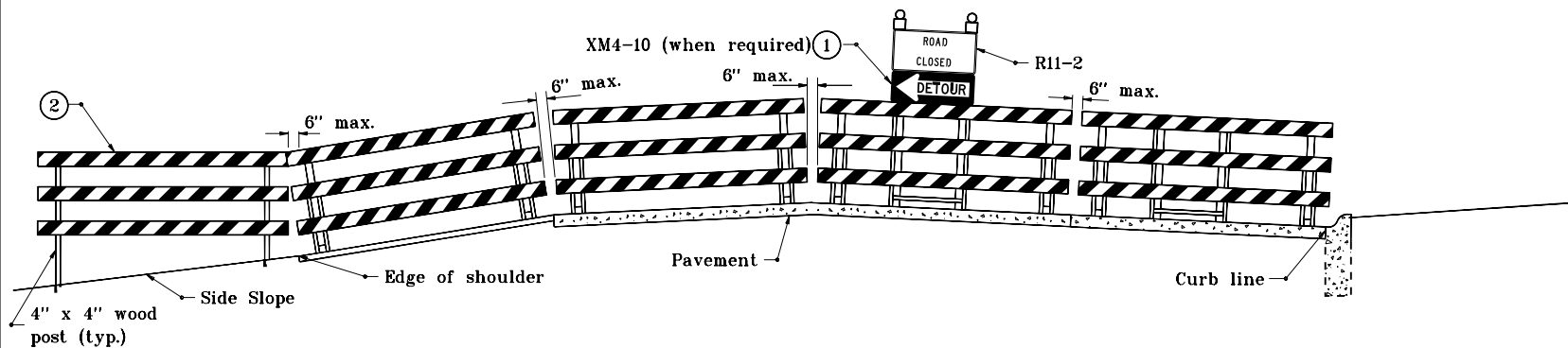
- ① The Detour Arrow sign shall be used only when a detour route has been signed.
- ② Barricades shall be supported on driven posts in areas outside of the pavement or sidewalk, where side slopes are 3 to 1 or flatter.
3. See standard drawing E 801-TCSN-11 for additional notes.



(HALF PLAN WITH SHOULDER SECTION)

(HALF PLAN WITH CURB SECTION)

PLAN VIEW



(HALF ELEVATION WITH SHOULDER SECTION)

(HALF ELEVATION WITH CURB SECTION)

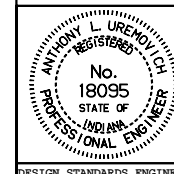
ELEVATION

TYPICAL APPLICATIONS OF TYPE III BARRICADES ROAD CLOSED TO ALL TRAFFIC

INDIANA DEPARTMENT OF TRANSPORTATION

TYPE III BARRICADE TYPICAL APPLICATIONS SEPTEMBER 1997

STANDARD DRAWING NO. E 801-TCDV-07



DETAILS PLACED IN THIS FORMAT 11-15-99

/s/ Anthony L. Uremovich 11-15-99
DESIGN STANDARDS ENGINEER DATE

/s/ Firooz Zandi 11-15-99
CHIEF HIGHWAY ENGINEER DATE

DESIGN STANDARDS ENGINEER

ORIGINALLY APPROVED 9-02-97