

TYPICAL SIGN STANDARD
& ROAD CLOSURE SIGN ASSEMBLY

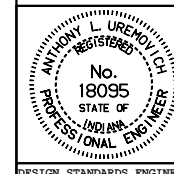
GENERAL NOTES

- ① The minimum vertical clearance for construction signs shall be as follows:
 - a) 7 ft between the top of the curb and the bottom of the sign on-curbed roadway sections.
 - b) 7 ft between the edge of pavement and the bottom of the sign on non-curbed roadway sections.
 - c) An advisory speed plate, required to be placed with another construction sign, shall be mounted on the post closest to the roadway at a minimum clearance of 6 ft above the edge of pavement. The bottom of the construction warning sign shall not be lower than the top of the advisory speed plate.
2. See Standard Drawing E 801-TCSN-11 for additional notes.

INDIANA DEPARTMENT OF TRANSPORTATION

TYPICAL SIGN STANDARD SEPTEMBER 1997

STANDARD DRAWING NO. E 801-TCDV-05



DETAILS PLACED IN THIS FORMAT 11-15-99

/s/ Anthony L. Uremovich 11-15-99
DESIGN STANDARDS ENGINEER DATE

/s/ Firooz Zandi 11-15-99
CHIEF HIGHWAY ENGINEER DATE

DESIGN STANDARDS ENGINEER

ORIGINALLY APPROVED 9-02-97