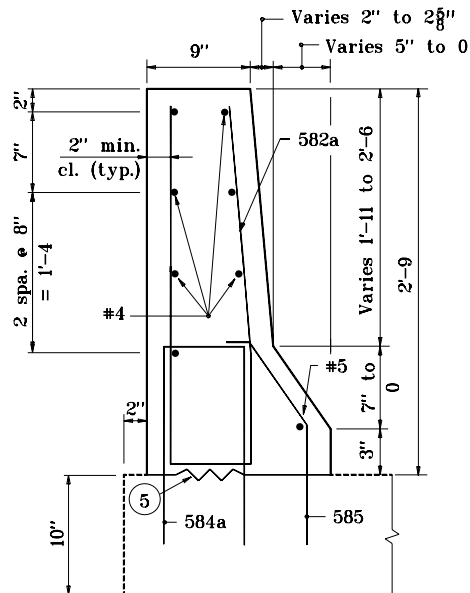
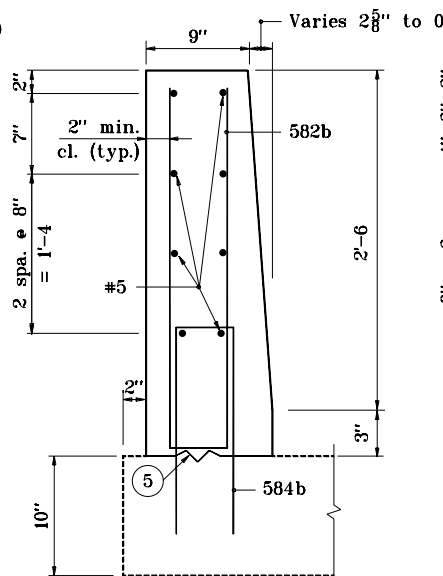


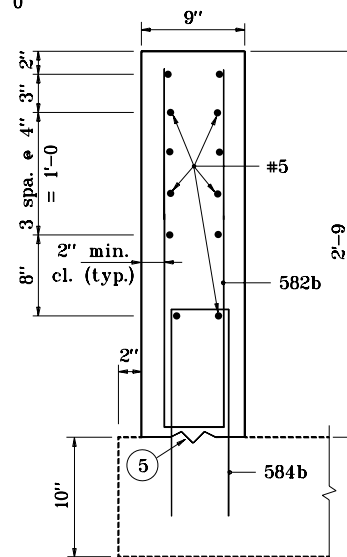
SECTION A-A



SECTION B-B



SECTION C-C



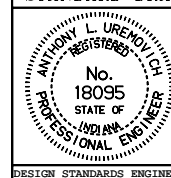
SECTION D-D

NOTES :

1. See Standard Drawing E 706-CBRT-04 for General Notes.
2. See Standard Drawing E 706-TTBC-01 for Plan and Elevation and E 706-TTBC-03 for reinforcement and bill of materials.

33" COMMON HEIGHT THRIE BEAM /
CONCRETE BRIDGE RAILING TRANSITION

INDIANA DEPARTMENT OF TRANSPORTATION
**CONCRETE BRIDGE RAILING
TRANSITION TYPE TBC**
SEPTEMBER 2001
STANDARD DRAWING NO. **E 706-TTBC-02**



/s/ Anthony L. Uremovich 9-04-01
DESIGN STANDARDS ENGINEER DATE

/s/ Firooz Zandi 9-04-01
CHIEF HIGHWAY ENGINEER DATE