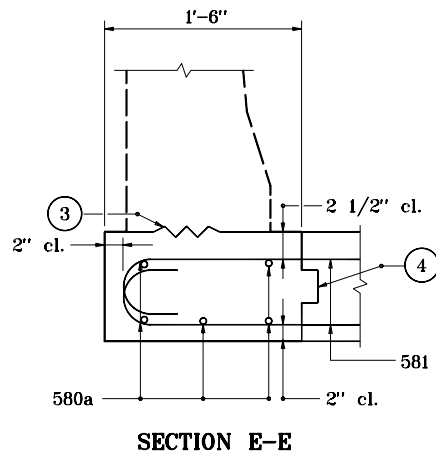
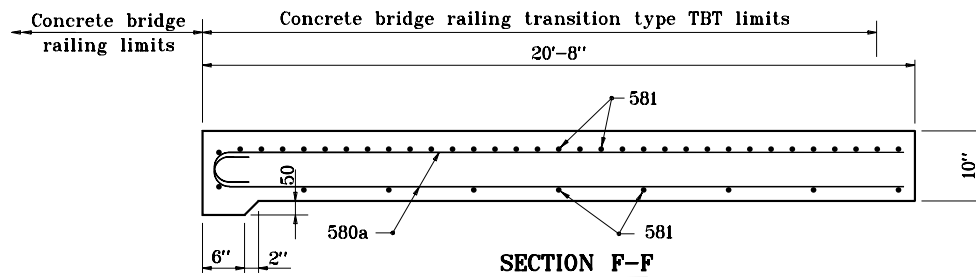
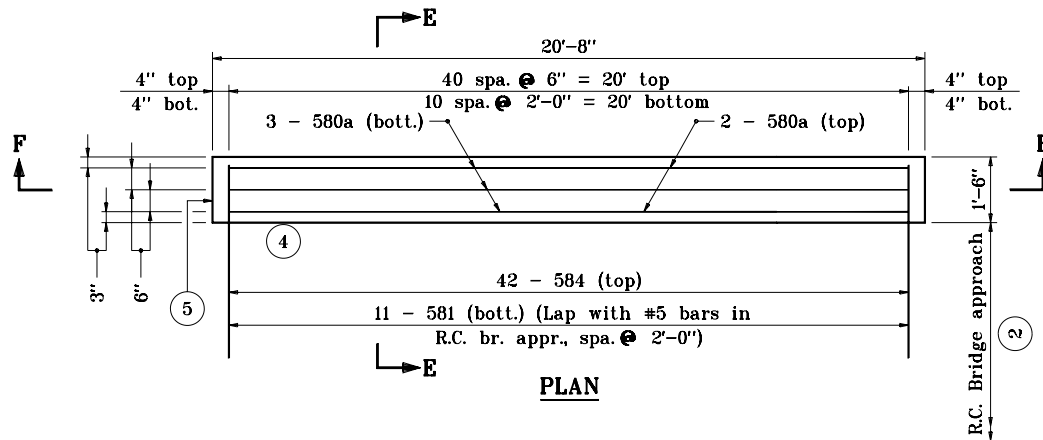
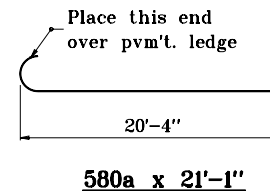
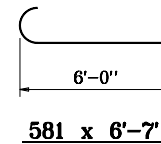


NOTES:


1. See Standard Drawing E 706-TTBT-01 through -03 for concrete bridge railing transition type TBT details.
2. See Standard Drawing E 706-TASE-05 for General Notes.



BILL OF MATERIALS			
These quantities are for one side Approach Slab Extension.			
EPOXY COATED REINFORCING STEEL			
Size & Mark	No. of Bars	Length (ft.)	Weight (lb)
580a	5	21'-1"	
581	52	6'-7"	
Total #5 Bars			467
Total Epoxy Coated Steel			467
MISCELLANEOUS			
R.C. Br. Appr., 10'			3.0 yd ²



APPROACH SLAB EXTENSION DETAILS

INDIANA DEPARTMENT OF TRANSPORTATION	
BRIDGE RAILING TRANSITION TBT SLAB EXTENSION	
JANUARY 2000	
STANDARD DRAWING NO. E 706-TASE-02	
	/s/ Anthony L. Uremovich 1-03-00 DESIGN STANDARDS ENGINEER DATE
	/s/ Firooz Zandi 1-03-00 CHIEF HIGHWAY ENGINEER DATE