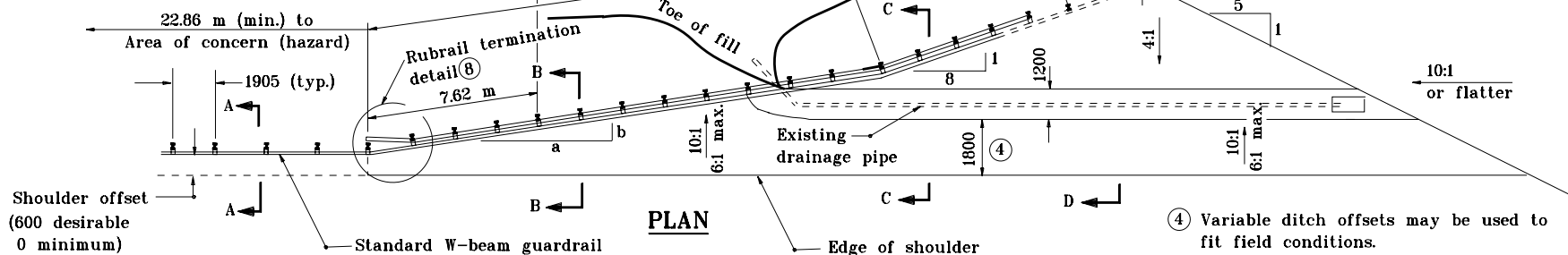


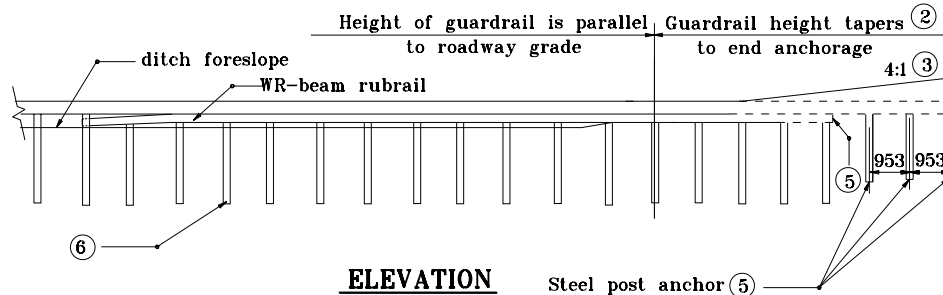
DITCH DETAIL



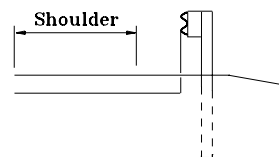
PLAN

Design speed km/h	a:b
≥ 100	13:1
90	12:1
80	11:1
70 or less	10:1

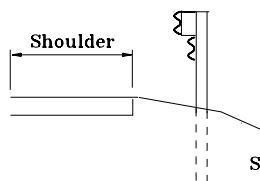
a:b RATIO



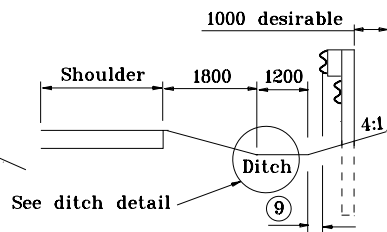
ELEVATION



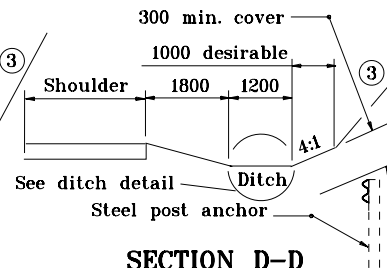
SECTION A-A



**SECTION B-B
(WITH RUBRAIL)**



**SECTION C-C
(WITH RUBRAIL)**



SECTION D-D

NOTES:

1. All posts are 2440 in length from where the guardrail flares away from the shoulder back to the post anchor. Posts for the post anchor are 1830 long.
- ② Guardrail height may be tapered down in elevation to maintain 1125 maximum.
- ③ A 4:1 or flatter slope is desirable. However, a steeper or flatter existing slope may be used.
- ④ Variable ditch offsets may be used to fit field conditions.
- ⑤ See Standard Drawing 601-GRET-11 for rail attachment details.
- ⑥ See Standard Drawing 601-WBGA-06 for steel post and wood block details.
7. Ditch cross section profile should be same as upstream ditch cross section profile and have same or greater hydraulic capacity.
- ⑧ See Standard Drawing 601-WBGA-06 for detail.
- ⑨ Posts shall be installed offset from the required ditch cross section to maintain hydraulic capacity.

All dimensions are in mm unless otherwise specified.

INDIANA DEPARTMENT OF TRANSPORTATION	
GUARDRAIL END TREATMENT	
TYPE II	
JANUARY 2001	
STANDARD DRAWING NO. 601-GRET-10	
	/s/ Anthony L. Uremovich 1-02-01 DESIGN STANDARDS ENGINEER DATE
	/s/ Firooz Zandi 1-02-01 CHIEF HIGHWAY ENGINEER DATE