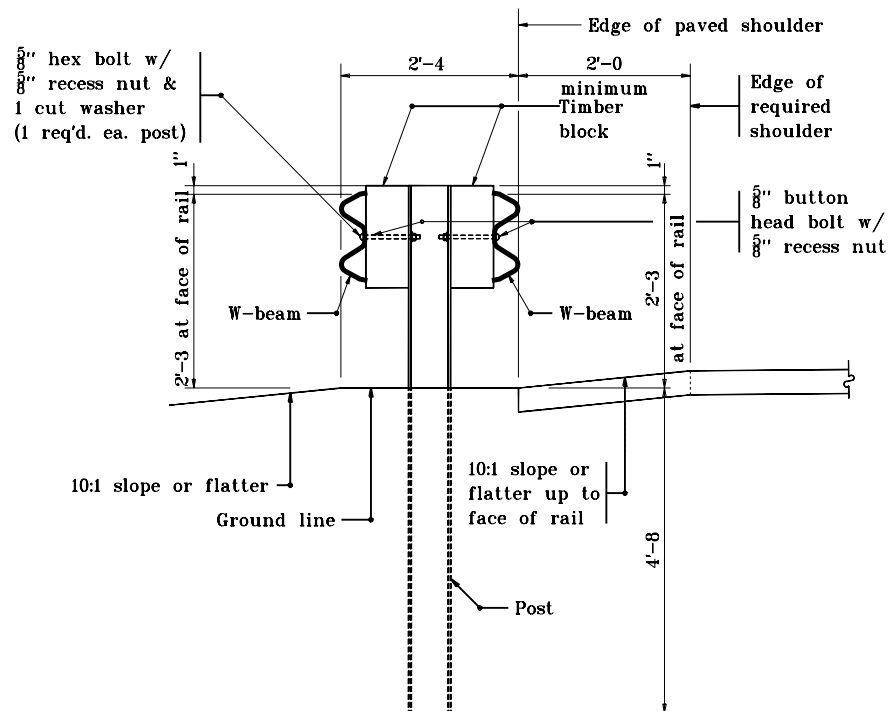


**TYPICAL W-BEAM INSTALLATION**



**TYPICAL DOUBLE FACED W-BEAM INSTALLATION**

INDIANA DEPARTMENT OF TRANSPORTATION	
<b>W-BEAM</b>	
<b>GUARDRAIL ASSEMBLIES</b>	
JANUARY 2001	
STANDARD DRAWING NO. <b>E 601-WBGA-01</b>	
	/s/ Anthony L. Uremovich 1-02-01 DESIGN STANDARDS ENGINEER DATE
	/s/ Firooz Zandi 1-02-01 CHIEF HIGHWAY ENGINEER DATE
	DESIGN STANDARDS ENGINEER