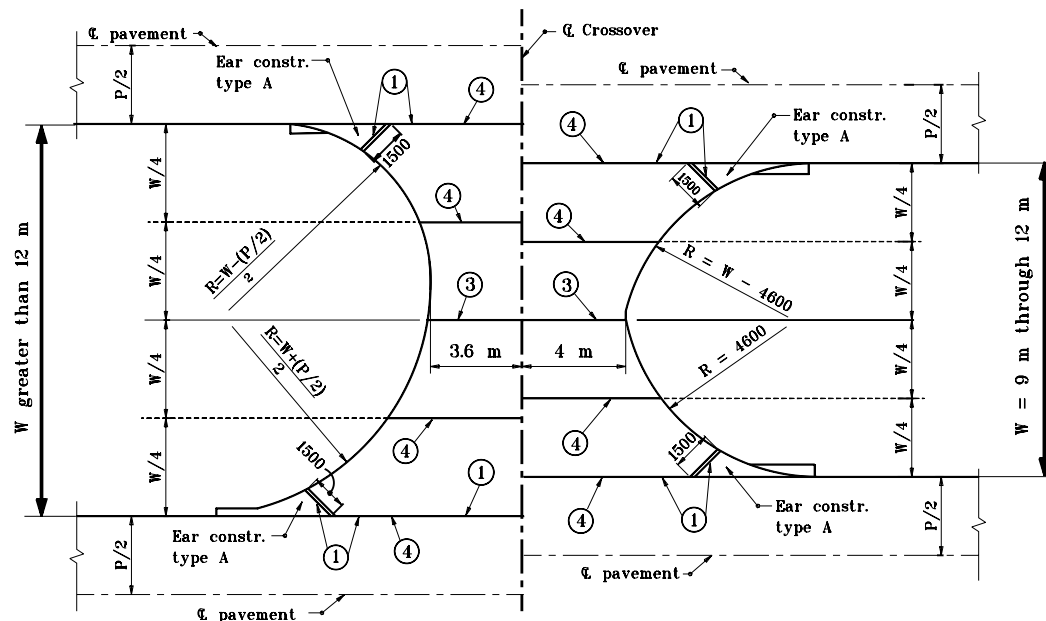


**COMMERCIAL DRIVE CROSSOVER PLAN FOR  $W = 2.3$  m to less than 9 m**



**COMMERCIAL DRIVE CROSSOVER PLAN FOR  $W = 9$  m to over 12 m**

**NOTES :**

- ① Thickened edge
2. See Standard Drawings :  
605-ERCN-01 for TYPE "A" ear construction  
605-ERCN-02 for TYPE "B" ear construction
- ③ Contraction joint type D-1, see Standard Drawing 503-CCPJ-01 for details.
- ④ Keyway construction joint - see Drawing 610-DRIV-16 for details.
6. Grade and cross section for commercial drive crossover shall be the same as for private drive crossover, except that the HMA Intermediate 19 mm, Mainline shall be 405 kg/m<sup>2</sup>.  
For cross sections see Standard Drawing 610-DRIV-18.
- ⑦ Integral concrete curb, see Standard Drawing 605-CCIN-01 for details.
8. Commercial drive crossover shall be constructed of a flexible section unless otherwise directed by the Engineer.

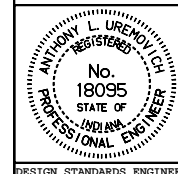
All dimensions are in mm unless otherwise specified.

INDIANA DEPARTMENT OF TRANSPORTATION

**COMMERCIAL DRIVE CROSSOVERS  
PLANS**

JANUARY 2000

STANDARD DRAWING NO. **610-DRIV-19**



/s/ Anthony L. Uremovich 1-03-00  
DESIGN STANDARDS ENGINEER DATE

/s/ Firooz Zandi 1-03-00  
CHIEF HIGHWAY ENGINEER DATE

DESIGN STANDARDS ENGINEER