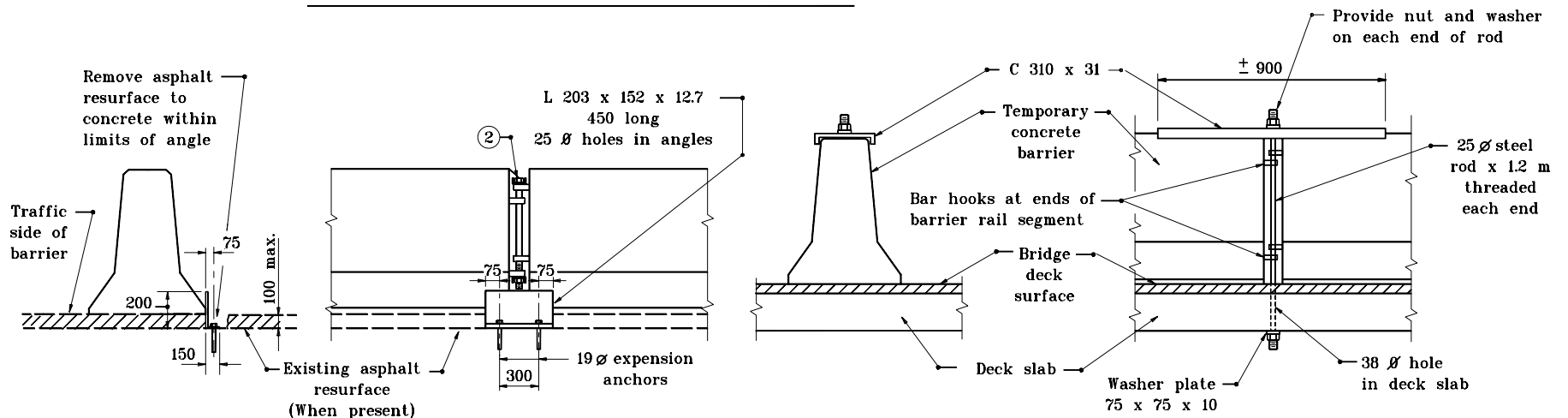


NOTES :

1. When anchoring against lateral movement is specified for temporary concrete barrier located on concrete or asphalt pavement or shoulder, the method of anchoring shall be as shown.
- ② For connection detail see Standard Drawing 602-TCCB-02.

BARRIER ANCHORAGE ON ASPHALT PAVEMENT



BRIDGE FLOORS AND CONCRETE PAVEMENT STANDARD METHOD

BRIDGE FLOOR ONLY ALTERNATE METHOD

BARRIER ANCHORAGE ON CONCRETE PAVEMENT

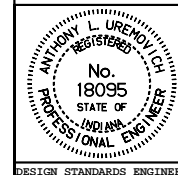
All dimensions are in mm unless otherwise specified.

INDIANA DEPARTMENT OF TRANSPORTATION

TEMPORARY CONCRETE BARRIER BARRIER ANCHORAGE

JANUARY 2000

STANDARD DRAWING NO. 602-TCCB-04



/s/ Anthony L. Uremovich 1-03-00
DESIGN STANDARDS ENGINEER DATE

/s/ Firooz Zandi 1-03-00
CHIEF HIGHWAY ENGINEER DATE

DESIGN STANDARDS ENGINEER