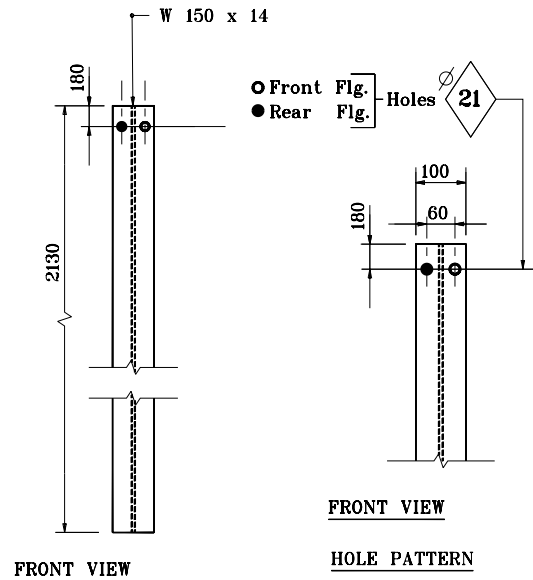
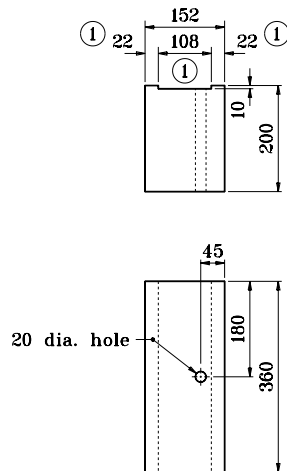


### M16 HEX HEAD BOLT AND RECESS NUT



### NOTES:

- ① These dimensions shall be adjusted as required to accommodate steel post flange.

All dimensions are in mm unless otherwise specified.

INDIANA DEPARTMENT OF TRANSPORTATION	
W-BEAM GUARDRAIL COMPONENTS JANUARY 2000	
STANDARD DRAWING NO. 601-WBGC-03	
	/s/ Anthony L. Uremovich 1-03-00 DESIGN STANDARDS ENGINEER DATE
	/s/ Firooz Zandi 1-03-00 CHIEF HIGHWAY ENGINEER DATE
DESIGN STANDARDS ENGINEER	