

GENERAL NOTES

- Radii of 7620 at minor cross streets shall be provided on new construction and on reconstruction where space permits.
 - Radii of 9140 or more at major cross streets shall be provided where feasible so that a truck may turn without encroachment.
 - Radii of 12190 or more at major cross streets shall be provided where trucks and buses repeatedly turn.
- ④ Ear construction type B permitted as shown on Standard Drawing 605-ERCN-02.

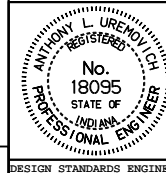
LEGEND

- Ⓐ Cement concrete pavement
- ⑤ Longitudinal joint
- ⑦ Keyway joint
- ⑨ 30 preformed joint filler
- ⑩ 10 preformed joint filler
- ⑭ Integral concrete curb
- ⑮ Combined curb and gutter
- ⑳ Contraction joint

All dimensions are in mm unless otherwise specified.

INDIANA DEPARTMENT OF TRANSPORTATION
STREET or ALLEY APPROACH
FLEXIBLE MAINLINE PAVEMENT
 APRIL 1995

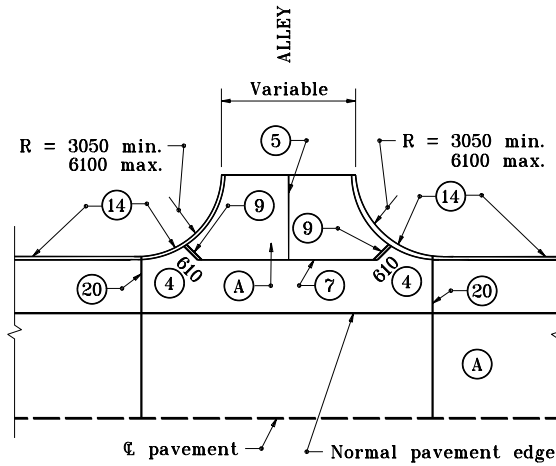
STANDARD DRAWING NO. **610-PRAP-13**



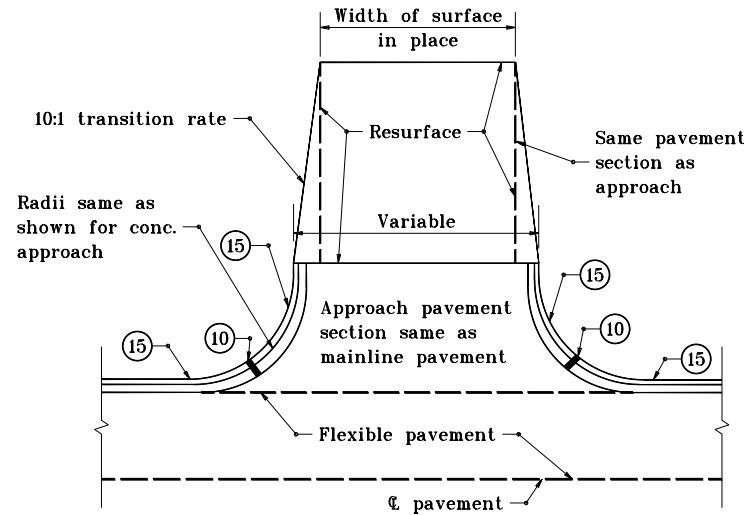
/s/ Anthony L. Uremovich 4-03-95
 DESIGN STANDARDS ENGINEER DATE

/s/ Donald W. Lucas 4-03-95
 CHIEF HIGHWAY ENGINEER DATE

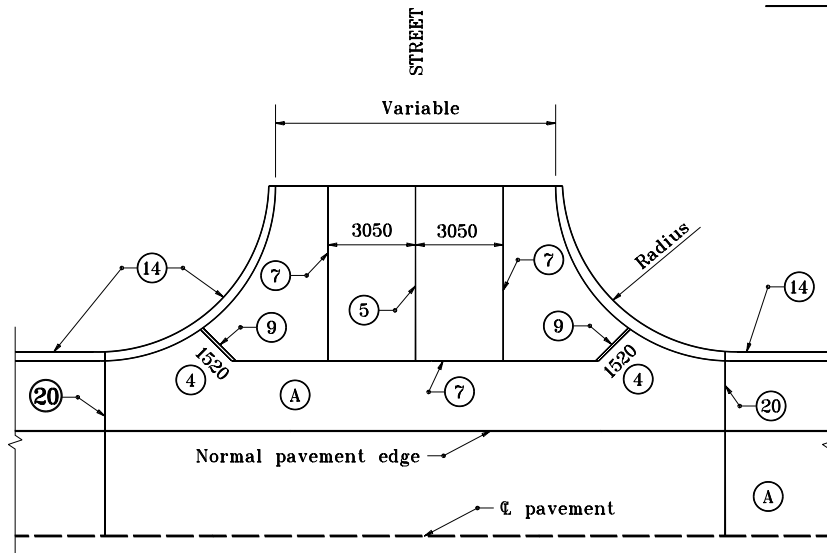
Source Sheet: **MI**



ALLEY APPROACH
WITH RIGID MAINLINE PAVEMENT



STREET OR ALLEY APPROACH
WITH FLEXIBLE MAINLINE PAVEMENT



STREET APPROACH
WITH RIGID MAINLINE PAVEMENT