

α	L	S	U	X	Y	V	Shldr. Gap	Chord		Mid Ordinate		Approach Areas			Turn Lane Part. Area (9)	α
								Lt.	Rt.	Lt.	Rt.	(A)	(B)	Total		
(o)	m	m	m	m	m	m	m	m	m	m	m	m ²	m ²	m ²	m ²	(o)
110	33.05	19.74	19.78	7.71	8.79	7.66	98.23	15.86	8.75	2.99	0.83	278.28	146.08	662.31	308.63	110
109	32.57	19.33	19.36	7.94	8.97	7.61	97.95	15.70	8.94	2.93	0.86	272.98	148.11	655.61	307.61	109
108	32.11	18.94	18.94	8.16	9.16	7.57	97.68	15.55	9.13	2.86	0.90	267.83	150.18	649.20	306.64	108
107	32.30	18.55	18.54	8.40	9.36	7.53	97.42	15.39	9.33	2.79	0.94	262.84	152.30	647.67	305.72	107
106	32.60	18.18	18.14	8.63	9.55	7.49	97.18	15.22	9.52	2.72	0.98	257.99	154.45	647.15	304.87	106
105	32.90	17.81	17.75	8.87	9.75	7.45	96.96	15.06	9.71	2.66	1.03	253.29	156.66	646.83	304.06	105
104	33.21	17.46	17.38	9.11	9.96	7.42	96.75	14.90	9.90	2.59	1.07	248.71	158.90	646.71	303.30	104
103	33.52	17.11	17.00	9.35	10.16	7.39	96.56	14.73	10.09	2.53	1.11	244.27	161.20	646.77	302.60	103
102	33.83	16.77	16.64	9.59	10.37	7.36	96.37	14.57	10.28	2.46	1.16	239.94	163.54	647.03	301.94	102
101	34.14	16.43	16.28	9.84	10.58	7.33	96.20	14.40	10.47	2.40	1.20	235.74	165.94	647.47	301.34	101
100	34.45	16.11	15.94	10.09	10.80	7.31	96.05	14.23	10.66	2.34	1.25	231.65	168.39	648.10	300.78	100
99	34.77	15.79	15.59	10.34	11.02	7.29	95.91	14.06	10.85	2.28	1.30	227.67	170.89	648.90	300.26	99
98	35.09	15.48	15.26	10.60	11.25	7.27	95.78	13.89	11.03	2.21	1.34	223.80	173.45	649.90	299.79	98
97	35.41	15.17	14.93	10.86	11.48	7.25	95.66	13.72	11.22	2.15	1.39	220.02	176.06	651.07	299.37	97
96	35.74	14.87	14.61	11.12	11.71	7.24	95.55	13.55	11.40	2.10	1.44	216.35	178.74	652.42	298.99	96
95	36.07	14.58	14.29	11.39	11.95	7.23	95.46	13.38	11.59	2.04	1.49	212.77	181.48	653.96	298.66	95
94	36.40	14.29	13.98	11.66	12.19	7.22	95.38	13.20	11.77	1.98	1.54	209.28	184.28	655.67	298.37	94
93	36.74	14.01	13.67	11.93	12.43	7.21	95.31	13.03	11.95	1.92	1.59	205.88	187.15	657.57	298.12	93
92	37.08	13.73	13.37	12.21	12.68	7.20	95.26	12.85	12.13	1.86	1.65	202.56	190.08	659.65	297.92	92
91	37.43	13.46	13.07	12.49	12.94	7.20	95.21	12.67	12.31	1.81	1.70	199.33	193.09	661.91	297.76	91
90	37.78	13.20	12.78	12.78	13.20	7.20	95.18	12.49	12.49	1.75	1.75	196.17	196.17	664.35	297.64	90
89	38.13	12.94	12.49	13.07	13.46	7.20	95.16	12.31	12.67	1.70	1.81	193.09	199.33	666.98	297.56	89
88	38.49	12.68	12.21	13.37	13.73	7.20	95.15	12.13	12.85	1.65	1.86	190.08	202.56	669.80	297.53	88
87	38.86	12.43	11.93	13.67	14.01	7.21	95.15	11.95	13.03	1.59	1.92	187.15	205.88	672.80	297.54	87
86	39.23	12.19	11.66	13.98	14.29	7.22	95.16	11.77	13.20	1.54	1.98	184.28	209.28	676.00	297.59	86
85	39.60	11.95	11.39	14.29	14.58	7.23	95.19	11.59	13.38	1.49	2.04	181.48	212.77	679.39	297.69	85
84	39.98	11.71	11.12	14.61	14.87	7.24	95.23	11.40	13.55	1.44	2.10	178.74	216.35	682.97	297.83	84
83	40.37	11.48	10.86	14.93	15.17	7.25	95.28	11.22	13.72	1.39	2.15	176.06	220.02	686.76	298.01	83
82	40.76	11.25	10.60	15.26	15.48	7.27	95.34	11.03	13.89	1.34	2.21	173.45	223.80	690.75	298.23	82
81	41.16	11.02	10.34	15.59	15.79	7.29	95.42	10.85	14.06	1.30	2.28	170.89	227.67	694.94	298.50	81
80	41.57	10.80	10.09	15.94	16.11	7.31	95.50	10.66	14.23	1.25	2.34	168.39	231.65	699.35	298.82	80
79	41.98	10.58	9.84	16.28	16.43	7.33	95.60	10.47	14.40	1.20	2.40	165.94	235.74	703.97	299.18	79
78	42.41	10.37	9.59	16.64	16.77	7.36	95.72	10.28	14.57	1.16	2.45	163.54	239.94	708.81	299.58	78
77	42.84	10.16	9.35	17.00	17.11	7.39	95.84	10.09	14.73	1.11	2.53	161.20	244.27	713.88	300.03	77
76	43.27	9.96	9.11	17.38	17.46	7.42	95.98	9.90	14.90	1.07	2.59	158.90	248.71	719.18	300.53	76
75	43.72	9.75	8.87	17.75	17.81	7.45	96.13	9.71	15.06	1.03	2.66	156.66	253.29	724.72	301.08	75
74	44.17	9.55	8.63	18.14	18.18	7.49	96.30	9.52	15.22	0.98	2.72	154.45	257.99	730.50	301.68	74
73	44.64	9.36	8.40	18.54	18.55	7.53	96.48	9.33	15.39	0.94	2.79	152.30	262.84	736.53	302.33	73
72	45.11	9.16	8.16	18.94	18.94	7.57	96.67	9.13	15.55	0.90	2.86	150.18	267.83	742.82	303.03	72
71	45.60	8.97	7.94	19.36	19.33	7.61	96.88	8.94	15.70	0.86	2.93	148.11	272.98	749.38	303.78	71
70	46.09	8.79	7.71	19.78	19.74	7.66	97.11	8.75	15.86	0.83	2.99	146.08	278.28	756.22	304.59	70

All dimensions are in mm unless otherwise specified.

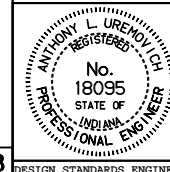
INDIANA DEPARTMENT OF TRANSPORTATION

PUBLIC ROAD APPROACH

TYPE D APPENDIX

NOVEMBER 1995

STANDARD DRAWING NO. **610-PRAP-12**



/s/ Anthony L. Uremovich 11-01-95
DESIGN STANDARDS ENGINEER DATE

/s/ Donald W. Lucas 11-01-95
CHIEF HIGHWAY ENGINEER DATE