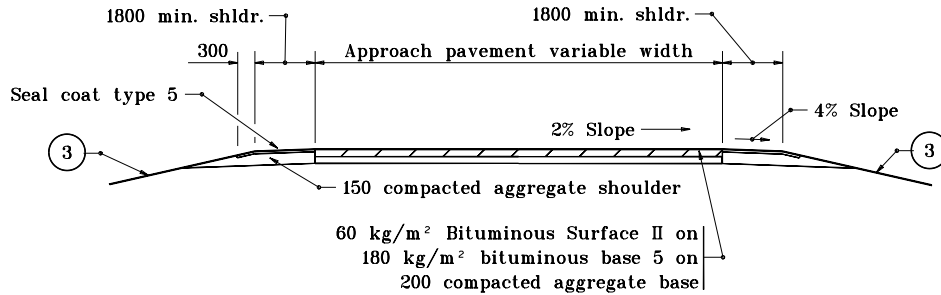


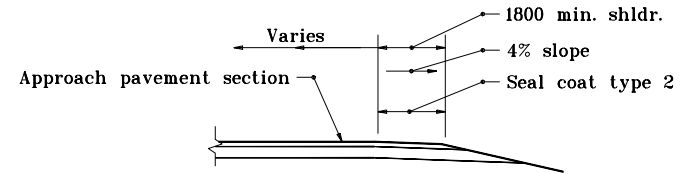
**GENERAL NOTES**

1. See General Notes on Standard Drawing 610-PRAP-08.
2. See Table on Standard Drawing 610-PRAP-09 for computed values.

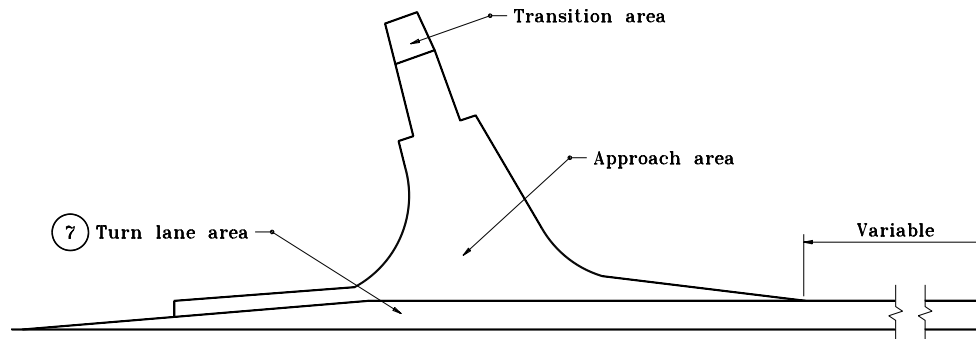


**MINIMUM PAVEMENT SECTION  
(FOR ADT THROUGH 1000)**

**SECTION A-A**



**SECTION B-B**



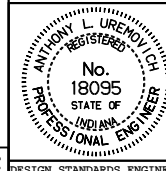
**PAY LIMITS FOR BITUMINOUS  
MIXTURE FOR APPROACHES**

**PUBLIC ROAD APPROACH TYPE C**

All dimensions are in mm unless otherwise specified.

INDIANA DEPARTMENT OF TRANSPORTATION  
**PUBLIC ROAD APPROACH  
TYPE C**  
SEPTEMBER 1997

STANDARD DRAWING NO. **610-PRAP-07**



/s/ Anthony L. Uremovich 9-01-97  
DESIGN STANDARDS ENGINEER DATE

/s/ Donald W. Lucas 9-01-97  
CHIEF HIGHWAY ENGINEER DATE