

RIGHT OF WAY FENCE
Steel Chain Link Fence

TUBULAR POST CHART								
HEIGHT OF FENCE	GROUP 1				GROUP 2			
	< 1.8m±30mm		≥ 1.8m±30mm		< 1.8m±30mm		≥ 1.8m±30mm	
	NOM. DIA.	WEIGHT	NOM. DIA.	WEIGHT	NOM. DIA.	WEIGHT	NOM. DIA.	WEIGHT
	mm	kg/m	mm	kg/m	mm	kg/m	mm	kg/m
END, CORNER, AND PULL POSTS	50±1	5.43	64±1	8.62	50±1	5.02	64±1	6.91
LINE POSTS	32±1	3.38	50±1	5.43	32±1	2.74	50±1	5.02
BRACE	32±1	3.38	32±1	3.38	32±1	2.74	32±1	2.74

GENERAL NOTES

- For each additional foot in height increase dimension A₁ and A₂ by 25 mm.
- Dimensions as shown are for 1220 mm fence.
- For chain link type stream crossing or depression detail see Standard Drawing MQ-C for dimensions and installation. Substitute chain link type fence for farm field type fence.

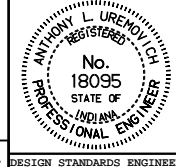
All dimensions are in mm unless otherwise specified.

INDIANA DEPARTMENT OF TRANSPORTATION

CHAIN LINK TYPE FENCE

MARCH 1995

STANDARD DRAWING NO. **603-CLTF-01**



/s/ Anthony L. Uremovich 4-03-95
DESIGN STANDARDS ENGINEER DATE

/s/ Donald W. Lucas 4-03-95
CHIEF HIGHWAY ENGINEER DATE