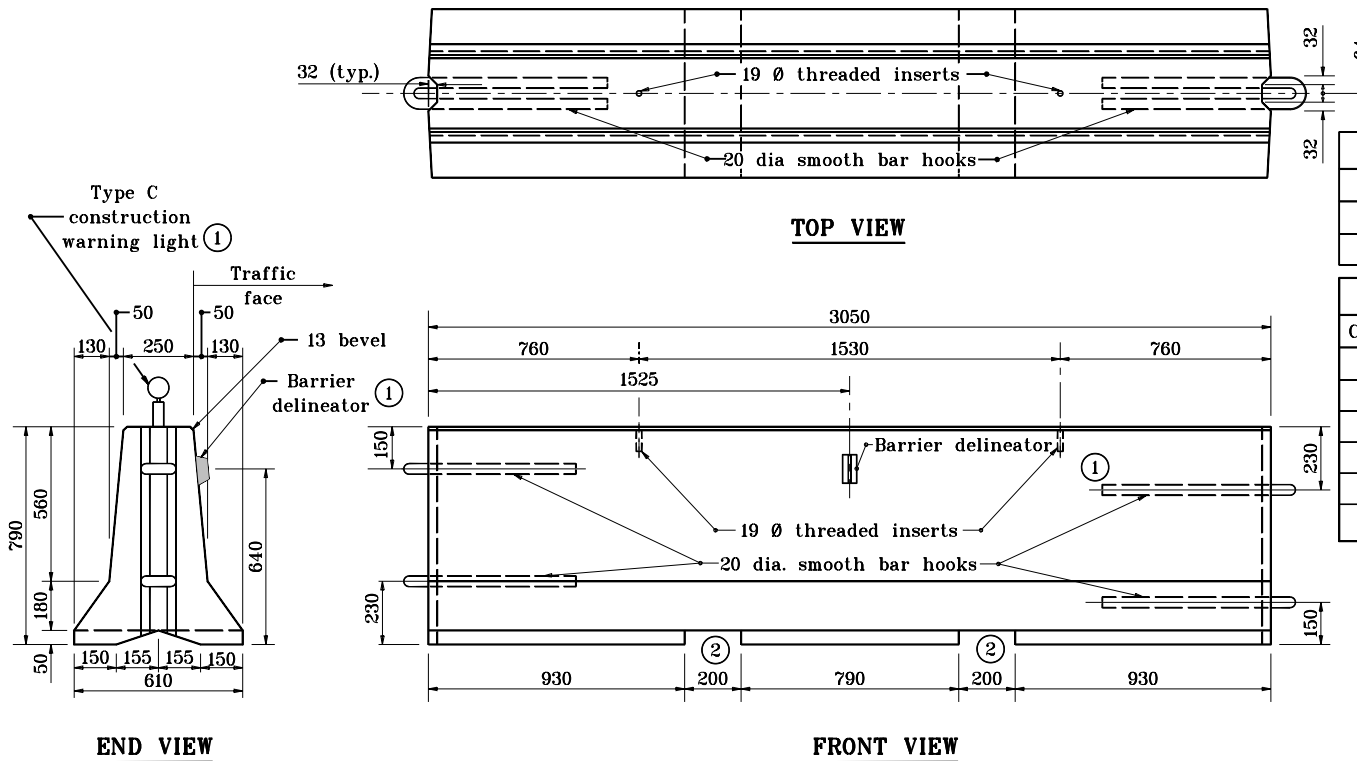


GENERAL NOTES

- ① Type C construction warning lights shall be attached as shown and shall be spaced at the number of meters which is equal to 0.3 times the number of miles per hour in the posted speed limits, with a minimum spacing of 6 m.
- ② The dimensions of the lifting slots are subject to adjustment as necessary to accommodate handling equipment.



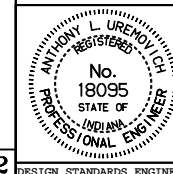
BARRIER DETAIL

Constr. Zone Speed	No. of Bays Req'd.
45 mph or less	3 Bay
Over 45 mph	6 Bay

Constr. Zone Speed, mph	Taper Flare Rate
65	19:1
60	17:1
55	16:1
50	14:1
45	13:1
40	11:1

All dimensions are in mm unless otherwise specified.

INDIANA DEPARTMENT OF TRANSPORTATION
TEMPORARY CONCRETE BARRIER
 SEPTEMBER 1997
 STANDARD DRAWING NO. **602-TCCB-01**



/s/ Anthony L. Uremovich 9-01-97
 DESIGN STANDARDS ENGINEER DATE

/s/ Donald W. Lucas 9-01-97
 CHIEF HIGHWAY ENGINEER DATE