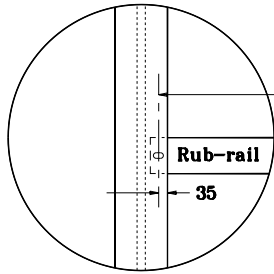


GENERAL NOTES

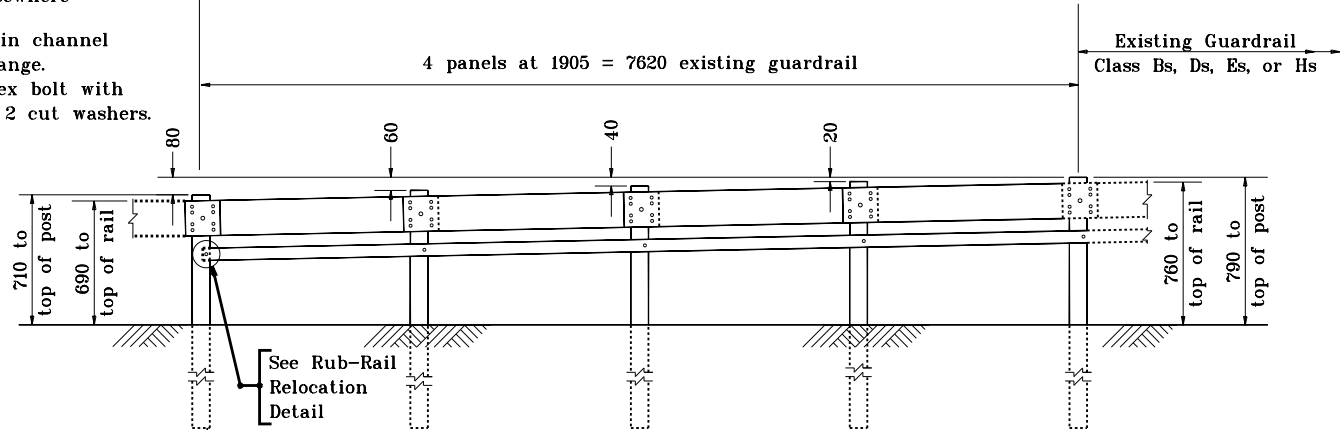
1. This sheet shall be used when new W-beam guardrail is being attached to existing rub-rail type W-beam guardrail. This sheet shall also be used when a new lower height guardrail end treatment is being attached to existing rub-rail type guardrail.
2. The details on this sheet are for the height adjustment of existing rub-rail type guardrail.
3. If rub-rail is not spliced at post, the channel shall be cut and repositioned behind the flange.
4. If rub-rail is spliced at post, the splice material shall be removed and the channel shall be be repositioned behind the flange.

W-beam guardrail,
guardrail transition type TGB,
guardrail transition type WGB,
guardrail end treatment type MS, or
guardrail end treatment type OS,
as shown elsewhere

20 x 50 slot in channel
20 hole in flange.
Install M16 hex bolt with
hex nut and 2 cut washers.



RUB-RAIL RELOCATION DETAIL



ELEVATION

GUARDRAIL TRANSITION TYPE VH AT 1905 POST SPACING

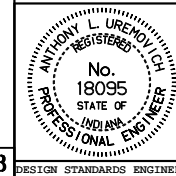
All dimensions are in mm unless otherwise specified.

INDIANA DEPARTMENT OF TRANSPORTATION

**GUARDRAIL TRANSITION
TYPE VH**

APRIL 1995

STANDARD DRAWING NO. **601-TTVH-01**



/s/ Anthony L. Uremovich 4-03-95
DESIGN STANDARDS ENGINEER DATE

/s/ Donald W. Lucas 4-03-95
CHIEF HIGHWAY ENGINEER DATE

Source Sheet: **T-3**