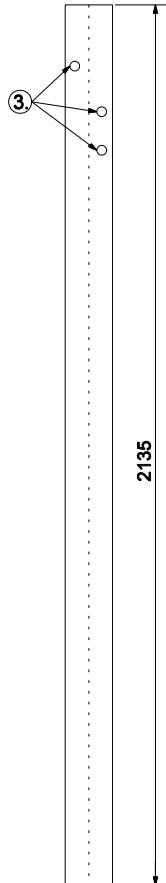
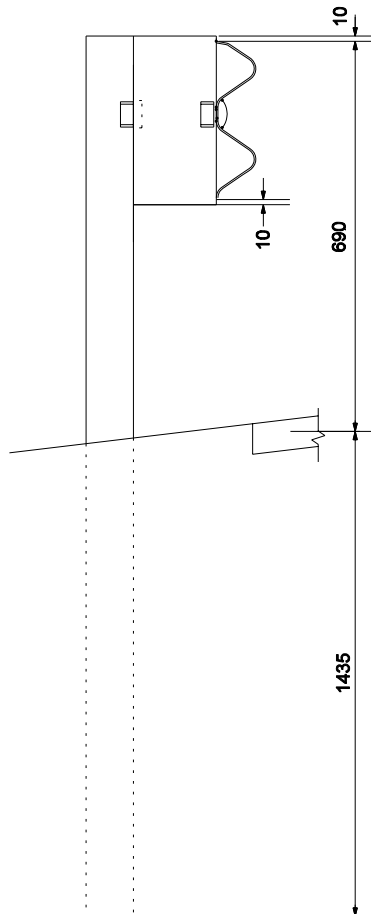


**FRONT VIEW**

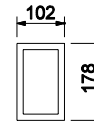


**BACK VIEW**

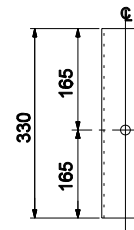
**W 150 x 14 POST DETAILS**



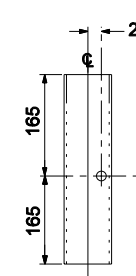
**SIDE VIEW**



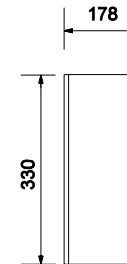
**TOP VIEW**



**FRONT VIEW**



**BACK VIEW**



**SIDE VIEW**

**TS 178 x 102 x 4.8 BLOCK DETAILS**

**NOTE:**

1. All holes drilled or punched to 21 dia.
2. For post numbers, see Standard Drawing 601-TTGB-01.
- ③ Hole pattern for posts numbers 1 thru 7 may be drilled in back flange. See Standard drawing 601-TTGB-03

**POSTS 9 AND 10**

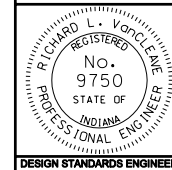
All Dimension are in mm unless otherwise specified

INDIANA DEPARTMENT OF TRANSPORTATION

**GUARDRAIL TRANSITION  
TYPE TGB**

MARCH 2004

STANDARD DRAWING NO. 601-TTGB-05



/s/ Richard L. VanCleave 3-02-04  
DESIGN STANDARDS ENGINEER DATE

/s/ Richard K. Smutzer 3-02-04  
CHIEF HIGHWAY ENGINEER DATE

DESIGN STANDARDS ENGINEER