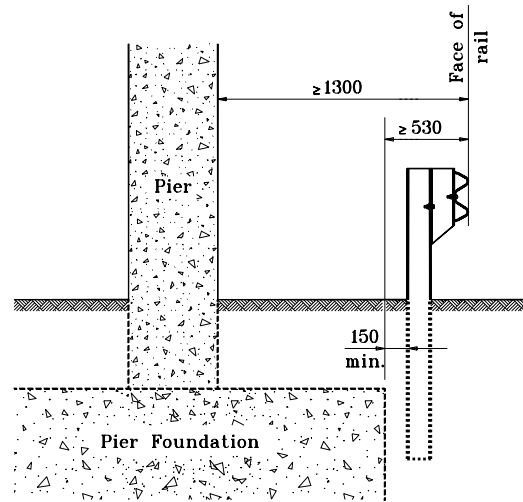


**GENERAL NOTES**

1. This sheet shall be used when W-beam guardrail is specified along the median side shoulder of a multi-lane divided roadway to shield the piers of tandem overhead structures.
2. The details on this sheet are typical guardrail layouts for shielding the piers of tandem overhead structures. The required length of guardrail shall be determined in accordance with Tables P-3-1 and P-3-2, and shall be as shown on the plans.
3. Dimensions and details not shown on this sheet shall be as shown on the plans.

<b>TABLE P-3-1</b>			
Outside (Right Side) Shoulder Pier Approach Guardrail Lengths at Piers/Frame Bents $\leq 4.9$ m from Pavement Edge			
Design speed km/h	Pier End Inside Clear Zone	Pier End Outside Clear Zone	Guardrail Pay Length (m)
	Require Minimum Length (m) in Advance of the Pier/Frame Bent End		
$\geq 80$	>of the rounded calculated length of need or 30	30	Required minimum length minus 7.62 for GP transition
< 80	>of the rounded calculated length of need or 15	15	

<b>TABLE P-3-2</b>			
Outside (Right Side) Shoulder Pier Approach Guardrail Lengths at Piers/Frame Bents $> 4.9$ m from Pavement Edge			
Design speed km/h	Pier End Inside Clear Zone	Pier End Outside Clear Zone	Guardrail pay length (m)
	Required Minimum Length (m) in Advance of the Pier/Frame Bent End		
$\geq 80$	>of the rounded calculated length of need or 30	30	Required minimum length plus length to shield pier face
< 80	>of the rounded calculated length of need or 15	15	



**Guardrail to Pier Clearance**

All dimensions are in mm unless otherwise specified.

INDIANA DEPARTMENT OF TRANSPORTATION	
<b>MEDIAN PIER PROTECTION GUARDRAIL</b>	
SEPTEMBER 1997	
STANDARD DRAWING NO. <b>601-MPPG-02</b>	
	/s/ Anthony L. Uremovich 9-01-97 DESIGN STANDARDS ENGINEER DATE
	/s/ Donald W. Lucas 9-01-97 CHIEF HIGHWAY ENGINEER DATE