

---

### BRIDGE SAMPLE PLANS – BRIDGE THIN DECK OVERLAY

*Reference: IDM 14-2.05 Bridge Plans, Preservation Project*

*IDM 412-2.01 Preventative Maintenance Project*

*BDA 412-01 Patching Quantities for Polymeric Overlays*

*BDA 412-03 Polymeric Overlay Project Considerations*

The following set of sample bridge plans has been developed to illustrate a typical set of Bridge Thin Deck Overlay plans. The tables throughout this set of sample plans have been generated using the Excel spreadsheet [Tables for Bridge PM Thin Deck Overlay.xlsm](#). Instructions for using this spreadsheet are provided on the Instructions tab within the file.

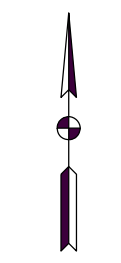
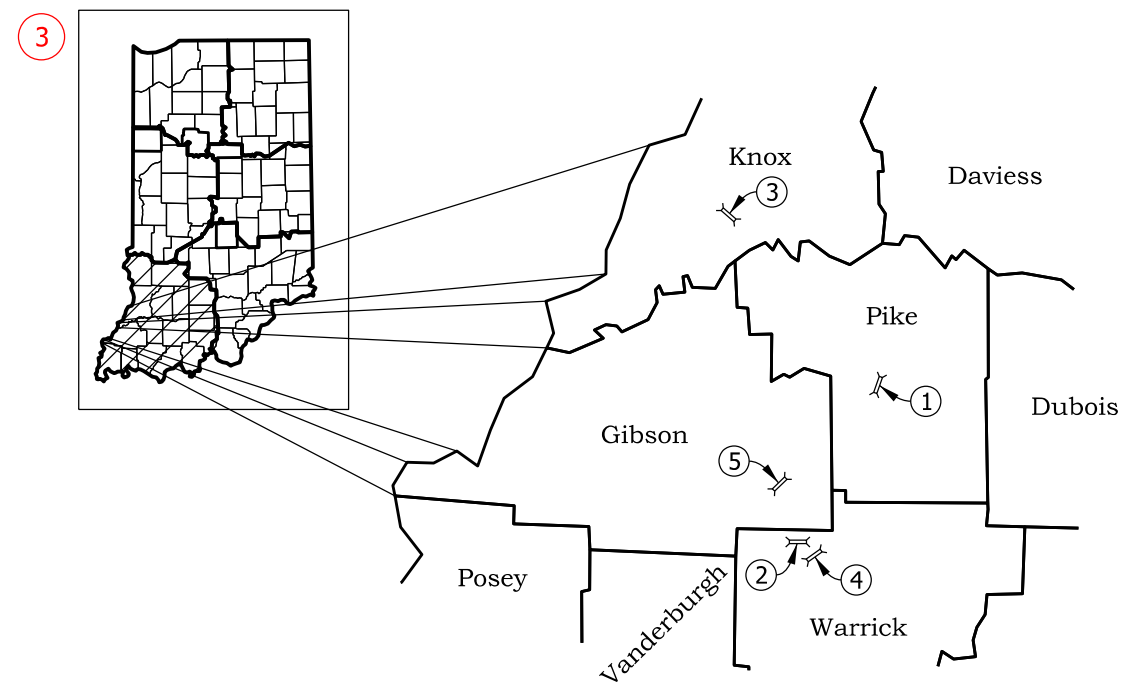
The plans were revised May 20, 2020 for minor editorial changes, and to remove the thin deck overlay from the reinforced bridge approach slab on several of the bridges. INDOT has noticed a relatively high percentage of failures of thin deck overlays on reinforced bridge approach slabs, and Construction Memo 20-08 published on May 11, 2020 has directed Designers and Construction to prohibit this application.

INDIANA DEPARTMENT OF TRANSPORTATION Text Style: 12 Pt Text

BRIDGE PREVENTATIVE MAINTENANCE PLANS Text Style: 18 Pt Text

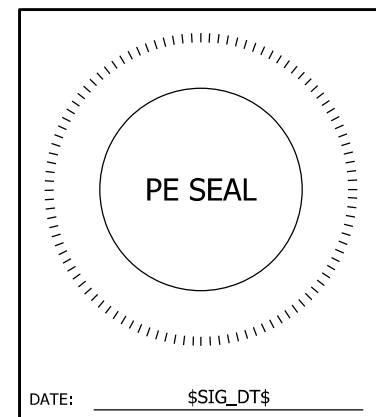
2 BRIDGE THIN DECK OVERLAY Text Style: 14 Pt Text

CONTRACT NO. B-00000 Text Style: 9 Pt Text



Not to Scale

PLANS PREPARED BY: 7 Engineer of Record  
 PHONE NUMBER: 317-555-1234



8  
 "THIS MEDIA SHOULD NOT BE CONSIDERED A CERTIFIED DOCUMENT."

CERTIFIED BY: \_\_\_\_\_  
 RECOMMENDED FOR LETTING: INDIANA DEPARTMENT OF TRANSPORTATION  
 DATE: \_\_\_\_\_

5 BRIDGE INDEX TABLE

Contract Bridge No.	Des No.	Bridge File Number	County
1	1800307	061-63-07662	PIKE
2	1800308	068-87-07188	WARRICK
3	1800313	061-42-07853	KNOX
4	1602150	I64-35-05597 BEBL	WARRICK
5	1800898	057-26-07177	GIBSON

4  
 Location Map must be of sufficient enough scope and appropriate scale to clearly depict the relation of the project to the area in which it is being placed.  
 Location Map Text Callouts: 9 Pt Text  
 County Labels: 10 Pt Text Min.  
 View Title: 12 Pt Text

Indiana Department of Transportation 6 Text Style: 7 Pt Text  
 Standard Specifications dated 2020 to be used with these plans.

**PURPOSE:**  
 The purpose of this sheet is to provide an overview of the project, including project data, project location, and approval signatures.

- REQUIRED ELEMENTS:**
- 1 Project Information required on every plan sheet:
    - Contract No.
    - Page No. and Total Pages
  - 2 Project Work Description
  - 3 County/District Location Map
  - 4 Project Location Map:
    - Show all contract structures and relative location throughout district
    - North Arrow and Scale (Typically No Scale)
  - 5 Bridge Index Table
    - See Tables Excel file for instructions.
  - 6 Standard Specification Reference
  - 7 Engineer of Record
    - For in-house projects, show "Indiana Department of Transportation"
  - 8 Signature Block and PE Seal

**INTENDED USE AND DISCLAIMER INFORMATION:**  
 This set of sample plan sheets is provided for illustrative purposes only. The callouts and notes in this sample plan are intended only to show a need for a callout, level of specificity, and its expected appearance. INDOT makes no guarantee of the accuracy of data used for this hypothetical project although every attempt has been made to produce a reasonable design in accordance with the current Indiana Design Manual. The Designer must determine specific content of notes for his/her individual project. In the event of a conflict, the policies stated in the current Indiana Design Manual and INDOT CAD Standards Manual will govern.

2 INDEX

TITLE SHEET ..... 1

INDEX SHEET ..... 2

GENERAL NOTES & UTILITIES INFORMATION SHEET ..... 3

LOCATION INFORMATION SHEET ..... 4

MAINTENANCE OF TRAFFIC ..... 5 - 18

CONSTRUCTION DETAILS ..... 19 - 23

PAVEMENT MARKINGS SUMMARY ..... 24

BRIDGE SUMMARY ..... 25

Typ. All Tables on Index Sheet:  
Table Title: 12 Pt Text  
Table Data: 9 Pt Text

**PURPOSE:**

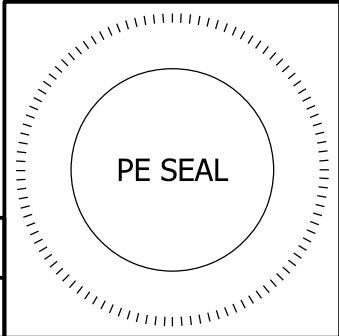
The purpose of this sheet is to provide a listing of all sheets in the plans and utilities contact information.

- REQUIRED ELEMENTS:**
- 1 Project Information required on every plan sheet:
    - Contract No.
    - Page No. and Total Pages
  - 2 Sheet Index
  - 3 Revisions Information (complete as needed):
    - Sheet No., Date, and Note of Revision
  - 4 Signature Block and PE Seal

3

REVISIONS		
SHEET NO.	DATE	REVISED

4



INDEX SHEET

Recommended for Approval:  
*ENG SIGNATURE*  
 Date: \$SIG\_DT\$

### 2 GENERAL NOTES

Plans for the existing structures are available upon request from the Research & Documents Library, Indiana Department of Transportation.

Bridge deck to be patched prior to placement of overlay.

Polymeric Concrete Bridge Deck Overlay (3/8" thickness) shall be applied to the areas shown in the plans.

Existing Joint Type I-A shall be saw cut and sealed after application of polymeric overlay system.

The following surfaces shall be Surface Sealed:  
Indicated areas of the bridge railings, bridge railing transitions, and top surface of reinforced concrete bridge approach slabs (when not part of the Polymeric Overlay area).

All permanent pavement paint markings shall be applied twice (reflected in Permanent Pavement Markings Quantities).

Typ. All Notes on General Notes Sheet:  
Notes Title: 12 Pt Text  
Notes Text: 9 Pt Text

**PURPOSE:**  
The purpose of this sheet is to provide the General Notes and utilities contact information.

- REQUIRED ELEMENTS:**
- 1 Project Information required on every plan sheet:
    - Contract No.
    - Page No. and Total Pages
  - 2 General Notes
  - 3 Utilities Information:
    - Name, Address, Contact Person, Contact Phone
    - 811 Logo and Statement
  - 4 Signature Block and PE Seal

### 3 UTILITIES

NO UTILITY INVOLVEMENT IS ANTICIPATED

INDIANA UNDERGROUND PLANT PROTECTION SERVICE, INC.

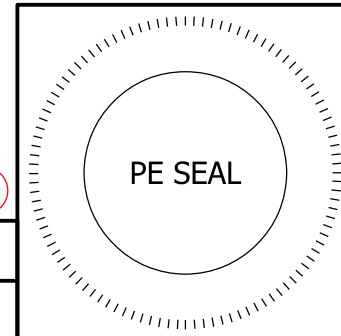


Per Indiana State Law IC-8-1-26-16, It is against the law to excavate without notifying the underground location service two (2) working days before commencing work.

INDIANA UNDERGROUND  
1-800-382-5544 OR CALL 811  
24 HOURS A DAY 7 DAYS A WEEK

Note: Utility Locations are shown based upon information (maps and paint marks) supplied by others, and there is no guarantee of the accuracy or completeness of said locations

4



**SPECIAL CONSIDERATIONS:**  
Polymeric Concrete Bridge Deck Overlay provision must be included in the contract documents.

## GENERAL NOTES & UTILITIES INFORMATION SHEET

Recommended for Approval:	<i>ENG SIGNATURE</i>
Date:	\$SIG_DT\$

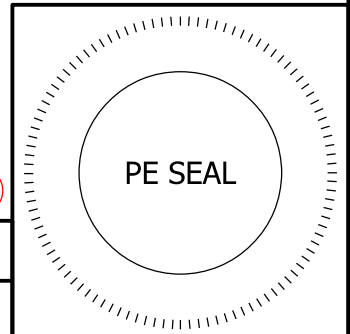
2 BRIDGE LOCATION INFORMATION TABLE

Contract Bridge No.	Des No.	Bridge File Number (Structure Type)	Route and Crossing	Location	Route	RP	County	Latitude/Longitude
1	1800307	061-63-07662 (Prestressed Concrete Box Beam)	SR 61 over PATOKA RIVER	SR 61 02.06 N SR 364	SR 61	35+87	PIKE	Lat.: N 38° 22' 49" Lon.: W 87° 13' 02"
2	1800308	068-87-07188 (Prestressed Concrete I Beam or Bulb-T Beam)	SR 68 over BIG CREEK - NEW CHANNEL	SR 68 04.30 W SR 61	SR 68	31+96	WARRICK	Lat.: N 38° 11' 39" Lon.: W 87° 22' 29"
3	1800313	061-42-07853 (Reinforced Concrete Slab)	SR 61 over BEECH CREEK	SR 61 04.87 N SR 56	SR 61	49+85	KNOX	Lat.: N 38° 33' 24" Lon.: W 87° 18' 09"
4	1602150	I64-35-05597 BEBL (Reinforced Concrete Slab)	I-64 EBL over BIG CREEK	I-64 03.50 W SR 61	I-64	35+81	WARRICK	Lat.: N 38° 11' 12" Lon.: W 87° 21' 26"
5	1800898	057-26-07177 (Reinforced Concrete Slab)	SR 57 over SMITH FORK	SR 57 02.04 N SR 68	SR 57	14+20	GIBSON	Lat.: N 38° 12' 56" Lon.: W 87° 25' 59"

**PURPOSE:**  
The purpose of this sheet is to provide detailed location data and descriptions for all contract structures.

- REQUIRED ELEMENTS:**
- 1 Project Information required on every plan sheet:  
- Contract No.  
- Page No. and Total Pages
  - 2 Bridge Location Information Table  
- See Tables.xls file for additional instructions.
  - 3 Signature Block and PE Seal

Typ. All Tables and Notes on Location Information Sheet:  
Table Title: 12 Pt Text  
Table Data: 9 Pt Text  
Text Notes: 9 Pt Text



3

LOCATION INFORMATION SHEET

Recommended for Approval:  
*ENG SIGNATURE*  
 Date: \$SIG\_DT\$

2 MAINTENANCE OF TRAFFIC SUMMARY

Contract Bridge No.	Des No.	Route and Crossing	MOT Type	IHCP Preapproved Time by Closure Type		Comments	Speed Posted
				Shoulder Closure	Lane Closure		
1	1800307	SR 61 over PATOKA RIVER	Phased Single Lane Closure w/ Temporary Signal (See Shts. 8-11 for details.)	**	**	Double-Lane Closure not allowed	55
2	1800308	SR 68 over BIG CREEK - NEW CHANNEL	Detour (See Shts. 12 & 13 for details.)	**	**		55
3	1800313	SR 61 over BEECH CREEK	Detour (See Shts. 14 & 15 for details.)	**	**		55
4	1602150	I-64 EBL over BIG CREEK	Shoulder Closure or Single Lane Closure	Anytime	Anytime	Double-Lane Closure not allowed	70
5	1800898	SR 57 over SMITH FORK	Detour (See Shts. 16 & 17 for details.)	**	**		55

\*\* Not applicable to this project.

Typ. All Tables and Notes on Maintenance of Traffic Summary Table Sheet:  
 Table Title: 12 Pt Text  
 Table Data: 9 Pt Text  
 Text Notes: 9 Pt Text

3 NOTES

Weekend or Nighttime Only: Single lane closure or single lane restrictions in each direction between Friday 9:00 p.m. to Monday 6:00 a.m. and weekdays 9:00 p.m. to 6:00 a.m.

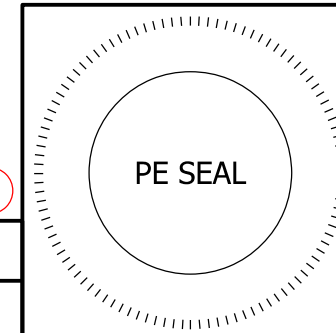
Nighttime Only: Single lane closure or single lane restriction in each direction any day of the week 9:00 p.m. to 6:00 a.m.

Any lane or shoulder closures outside the allowable times shown in the Traffic Summary require approval from the Engineer.

For Shoulder Closure Detail, see Sht. 6.

For Single Lane Closure Detail, see Sht. 7.

4



MAINTENANCE OF TRAFFIC SUMMARY TABLE

Recommended for Approval:  
*ENG SIGNATURE*  
 Date: \$SIG\_DT\$

PURPOSE:

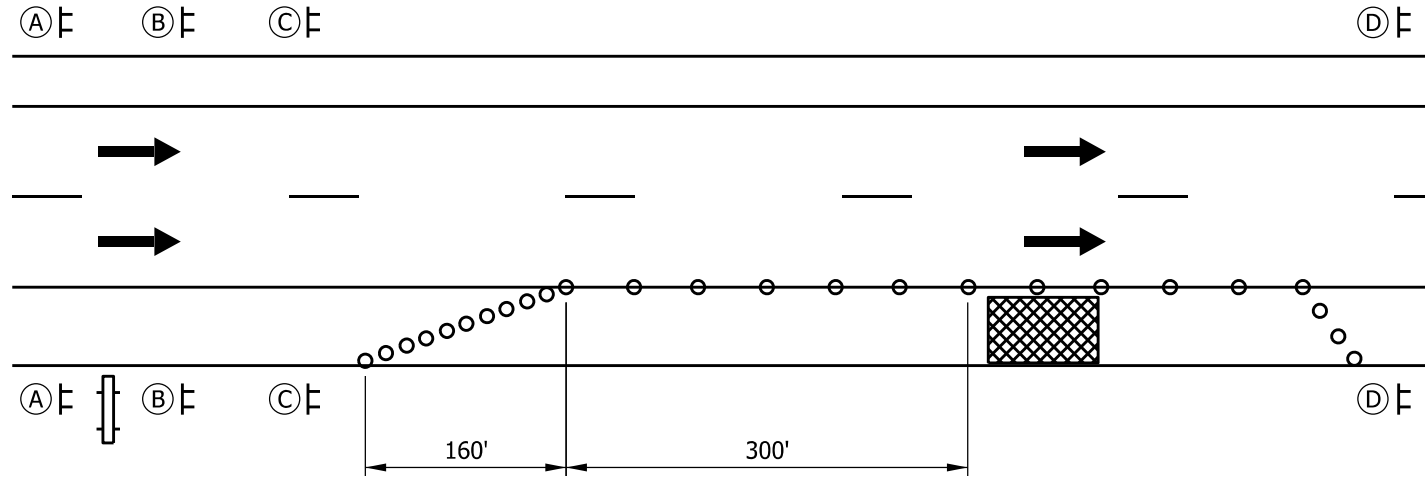
The purpose of this sheet is to provide a summary of Maintenance of Traffic details for each contract structure.

REQUIRED ELEMENTS:

- 1 Project Information required on every plan sheet:  
 - Contract No.  
 - Page No. and Total Pages
- 2 Maintenance of Traffic Summary:  
 - See Tables.xls for additional instructions.
- 3 Notes
- 4 Signature Block and PE Seal

SPECIAL CONSIDERATIONS:


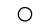
This table can be amended for locations not on the interstate. The "IHCP..." column can be changed to "Proposed MOT" with standard drawings or plan set sheet numbers referenced for each location.

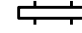


2 **SHOULDER CLOSURE DETAIL**  
Not to Scale

Typ. All Details and Notes:  
Detail Title: 12 Pt Text  
Detail Sub-Title: 9 Pt Text  
Dimensions and Text Callouts: 9 Pt Text  
Text Notes: 9 Pt Text

5 **LEGEND**

-  Work Site
-  Channelizing Device

- 4  Portable Changeable Message Sign (PCMS)

MAINTENANCE OF TRAFFIC QUANTITIES	
Shoulder Closure	
Pay Item	Quantity
Construction Sign, Type A	10 Ea.
Portable Changeable Message Sign	1 Ea.
Maintaining Traffic	1 LS

SPEEDING  
MAX \$1000  
RECKLESS DRIVING  
MAX 6 YRS

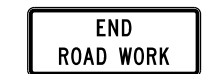
XW2-6-A  
(A)



XW20-1  
(B)

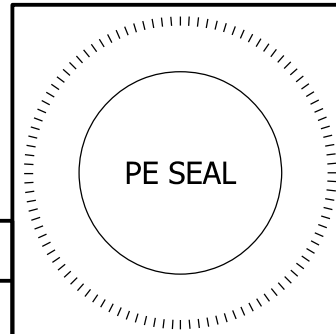


XW21-5-A  
(C)



G20-2  
(D)

3 **CONSTRUCTION SIGNS**



**PURPOSE:**  
The purpose of this sheet is to provide a detail and signage for a temporary shoulder closure when included in the Maintenance of Traffic Summary table.

- REQUIRED ELEMENTS:**
- 1 Project Information required on every plan sheet:
    - Contract No.
    - Page No. and Total Pages
  - 2 Shoulder Closure Detail:
    - Work Area
    - Shoulder Taper
    - Channelizing Devices
    - Construction Signs
  - 3 Construction Signs with descriptions
  - 4 Maintenance of Traffic Quantities
  - 5 Legend
  - 6 Notes
  - 7 Signature Block and PE Seal

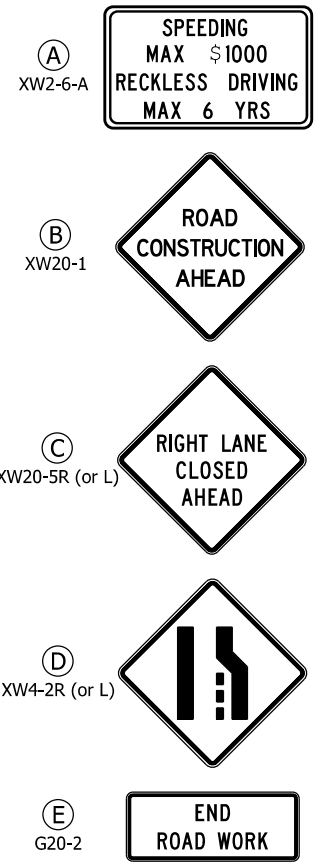
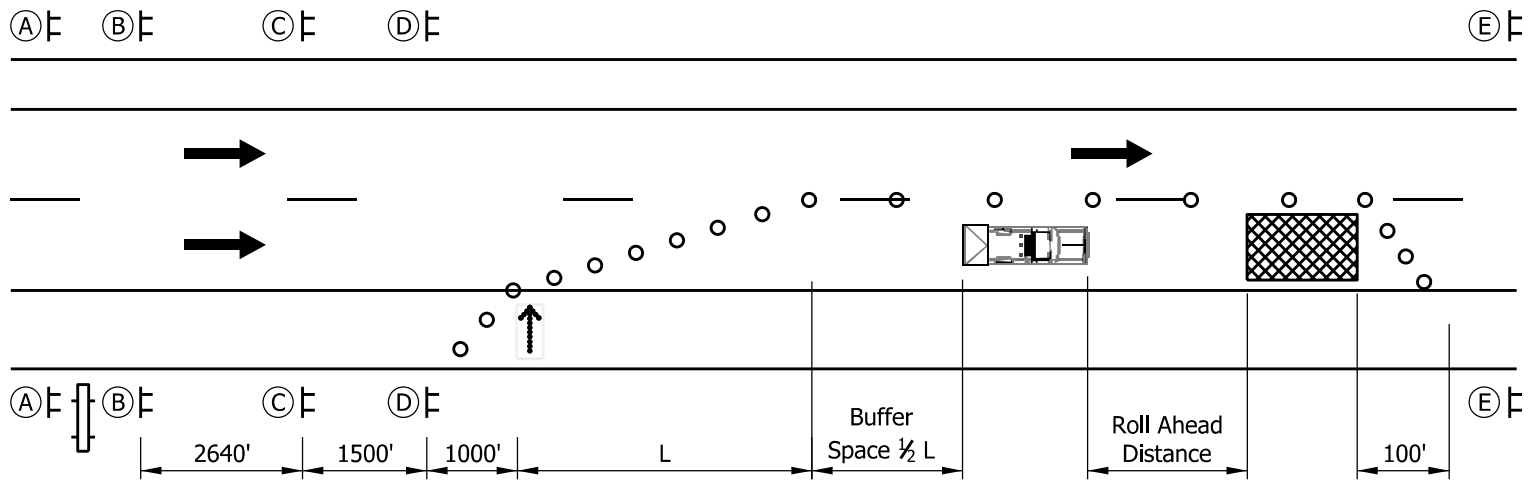
**SPECIAL CONSIDERATIONS:**  
Shoulder Closure Detail shown is for Multi-Lane Divided Highway application. Shoulder Closure on a Two-Lane Two-Way Road requires slightly different sign layout and quantities. See Std. Dwg. 801-TCLC-07 for information.

6 **NOTES**

- Channelizing Devices shall be spaced at 20' in tapered sections and at 50' in tangent sections.
- Portable Changeable Message Sign shall be placed as directed by the Engineer.
- For additional information, see Std. Dwg. 801-TCSC series.

**MAINTENANCE OF TRAFFIC SHOULDER CLOSURE DETAIL**

7 Recommended for Approval:  
*ENG SIGNATURE*  
Date: \$SIG\_DT\$



2 SINGLE LANE CLOSURE DETAIL  
Not to Scale

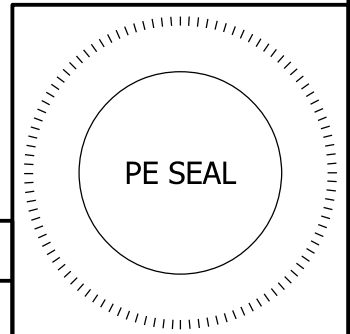
Typ. All Details and Notes:  
Detail Title: 12 Pt Text  
Detail Sub-Title: 9 Pt Text  
Dimensions and Text Callouts: 9 Pt Text  
Text Notes: 9 Pt Text

- 6 LEGEND
- Work Site
  - Truck Mounted Attenuator
  - Flashing Arrow Sign
  - Channelizing Device
  - Portable Changeable Message Sign (PCMS)

5

MAINTENANCE OF TRAFFIC QUANTITIES Single Lane Closure	
Pay Item	Quantity
Construction Sign, Type A	12 Ea.
Truck Mounted Attenuator	TBD Days
Portable Changeable Message Sign	1 Ea.
Flashing Arrow Sign	1 Ea.
Maintaining Traffic	1 LS

3 CONSTRUCTION SIGNS



4

Posted Speed Limit Prior to Construction Zone (mph)	Taper Length "L"
55	660'
60	720'
65	780'
70	840'

7 NOTES

- Channelizing Devices shall be spaced at 50' in tapered sections and at 100' in tangent sections.
- Portable Changeable Message Sign shall be placed as directed by the Engineer.
- Type III Barricade may replace Truck-Mounted Attenuators when workers are not present.
- Roll-Ahead Distance shall be per Manufacturer's specifications.
- A Flashing Arrow Sign shall be used when a freeway lane is closed.
- For additional information, see Std. Dwg. 801-TCLC series.

PURPOSE:

The purpose of this sheet is to provide a detail and signage for a temporary single-lane closure when included in the Maintenance of Traffic Summary table.

REQUIRED ELEMENTS:

- 1 Project Information required on every plan sheet:
  - Contract No.
  - Page No. and Total Pages
- 2 Single Lane Closure Detail:
  - Work Area
  - Truck Mounted Attenuator
  - Lane Taper
  - Channelizing Devices
  - Flashing Arrow Sign
  - Construction Signs
- 3 Construction Signs with descriptions
- 4 Table of Minimum Taper Lengths
- 5 Maintenance of Traffic Quantities
- 6 Legend
- 7 Notes
- 8 Signature Block and PE Seal

SPECIAL CONSIDERATIONS:

Truck Mounted Attenuator provision must be included in the contract documents to use this detail.

Single Lane Closure Detail shown is for Multi-Lane Divided Highway application. Single Lane Closure on a Two-Lane Two-Way Road requires a Temporary Signal and/or Flagger Detail.

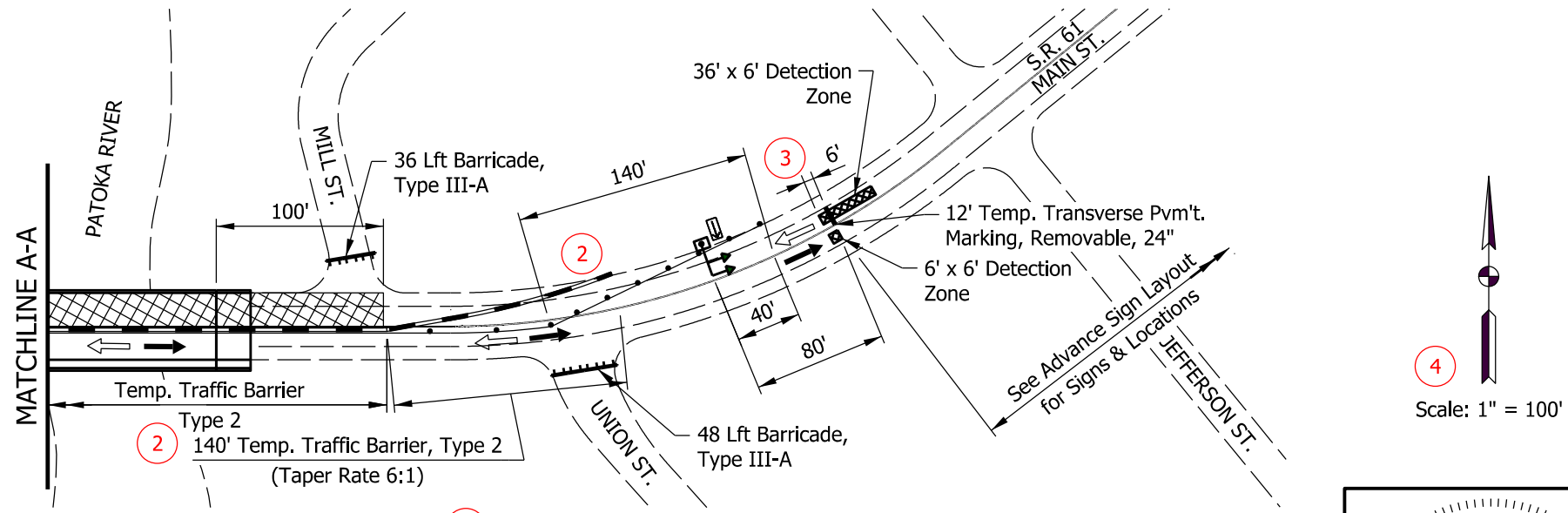
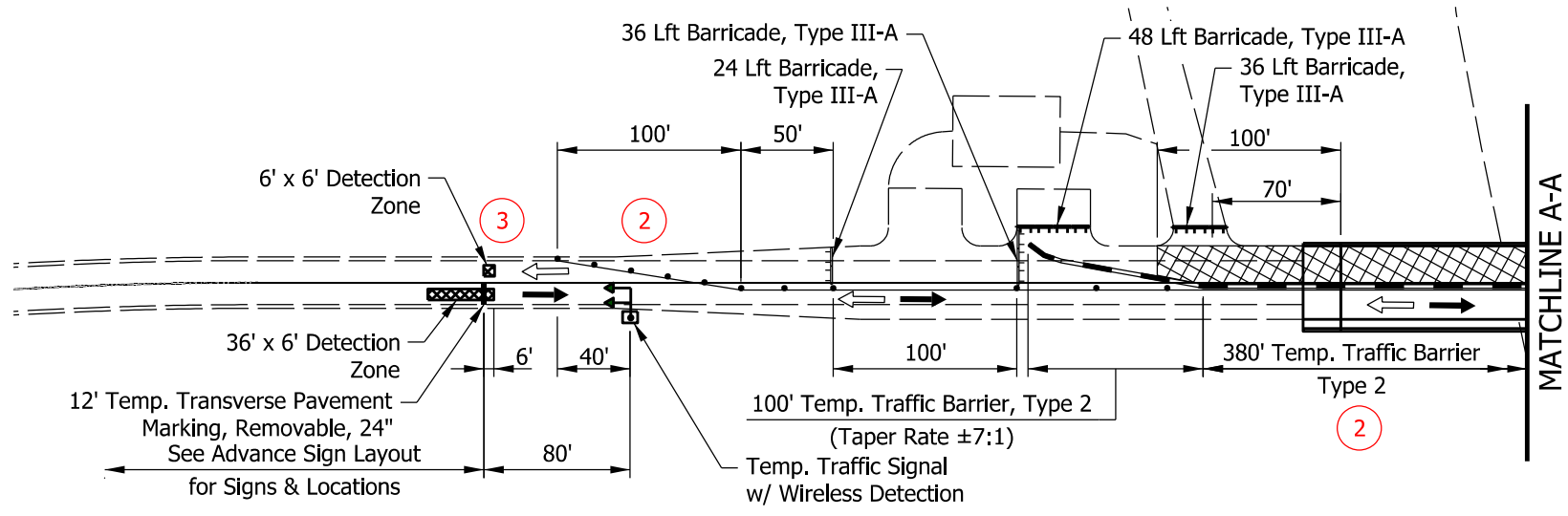
MAINTENANCE OF TRAFFIC  
SINGLE LANE CLOSURE DETAIL

8 Recommended for Approval:  
*ENG SIGNATURE*  
 Date: \$SIG\_DT\$



**PURPOSE:**  
 The purpose of this sheet is to provide layout, descriptions, and quantities for one phase of maintenance of traffic plan employing a temporary signal.

- REQUIRED ELEMENTS:**
- 1 Project Information required on every plan sheet:
    - Contract No.
    - Page No. and Total Pages
  - 2 Maintenance of Traffic Elements:
    - Work Area (hatched)
    - Temporary Traffic Barrier
    - Channelization Devices
    - Temporary Pavement Markings
    - Barricades
    - Direction of Traffic Arrows
  - 3 Temporary Signal w/ Detection Zones
  - 4 North Arrow and Drawing Scale
  - 5 Construction Zone Design Speed
  - 6 Notes
  - 7 Signature Block and PE Seal

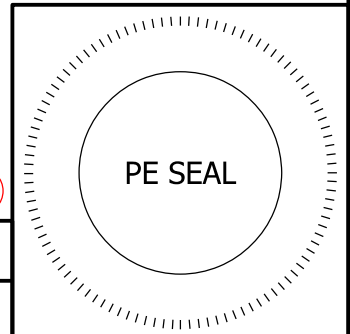


**NOTES** 6

For Maintenance of Traffic Legend and Notes, see Sht. 11.

For Advance Sign Layout, see Sht. 10.

CONSTRUCTION ZONE  
 DESIGN SPEED = 35 MPH 5



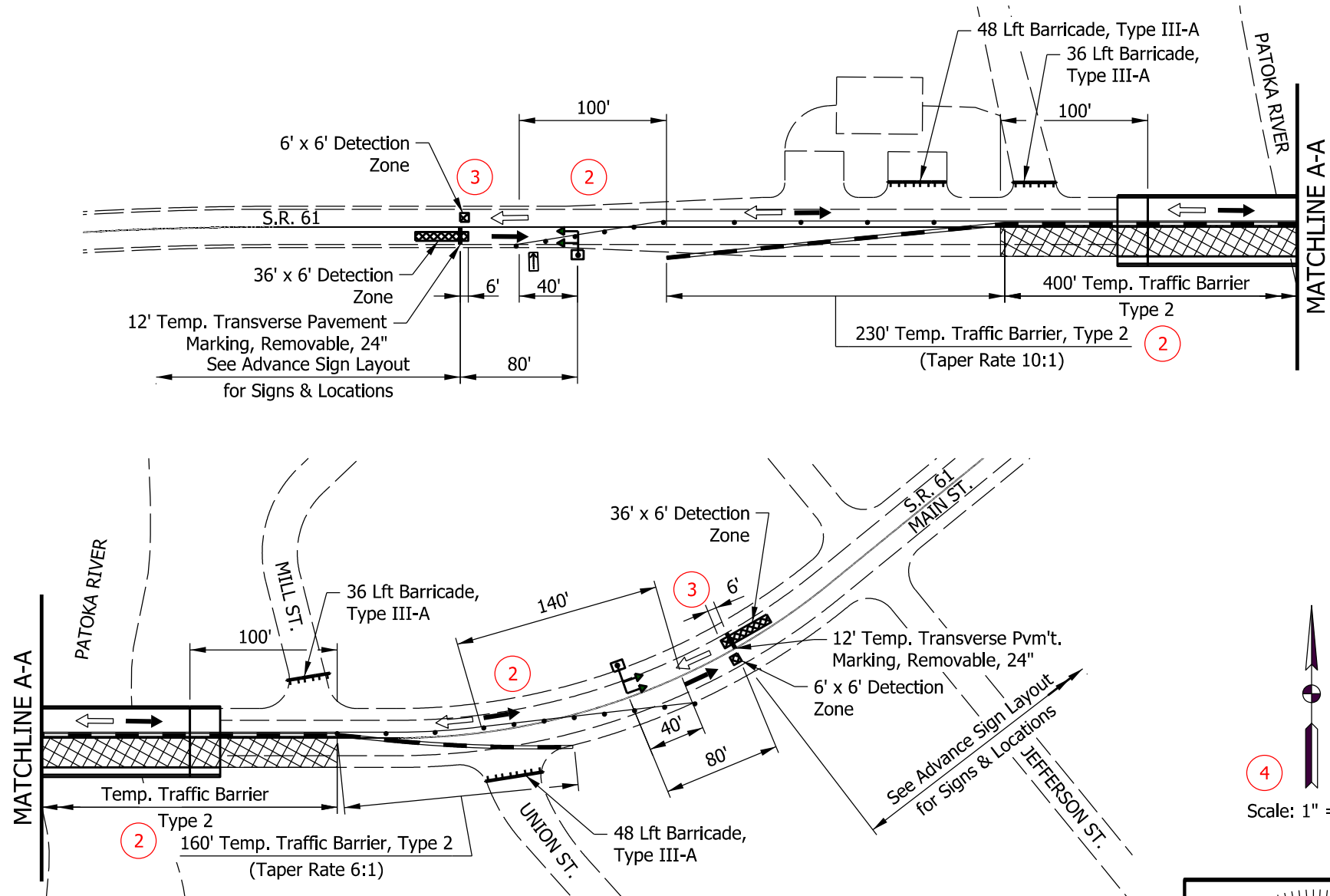
Recommended for Approval:

Date:

**MAINTENANCE OF TRAFFIC PLAN - PHASE I**  
**CONTRACT BRIDGE NO. 1**

**PURPOSE:**  
 The purpose of this sheet is to provide layout, descriptions, and quantities for one phase of maintenance of traffic plan employing a temporary signal.

- REQUIRED ELEMENTS:**
- 1 Project Information required on every plan sheet:
    - Contract No.
    - Page No. and Total Pages
  - 2 Maintenance of Traffic Elements:
    - Work Area (hatched)
    - Temporary Traffic Barrier
    - Channelization Devices
    - Temporary Pavement Markings
    - Barricades
    - Direction of Traffic Arrows
  - 3 Temporary Signal w/ Detection Zones
  - 4 North Arrow and Drawing Scale
  - 5 Construction Zone Design Speed
  - 6 Notes
  - 7 Signature Block and PE Seal

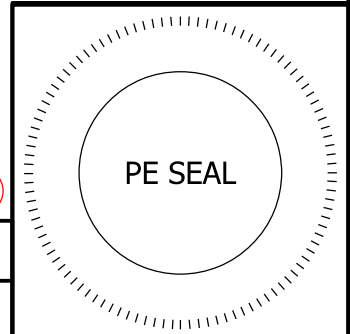


**NOTES** 6

For Maintenance of Traffic Legend and Notes, see Sht. 11.

For Advance Sign Layout, see Sht. 10.

CONSTRUCTION ZONE  
 DESIGN SPEED = 35 MPH 5



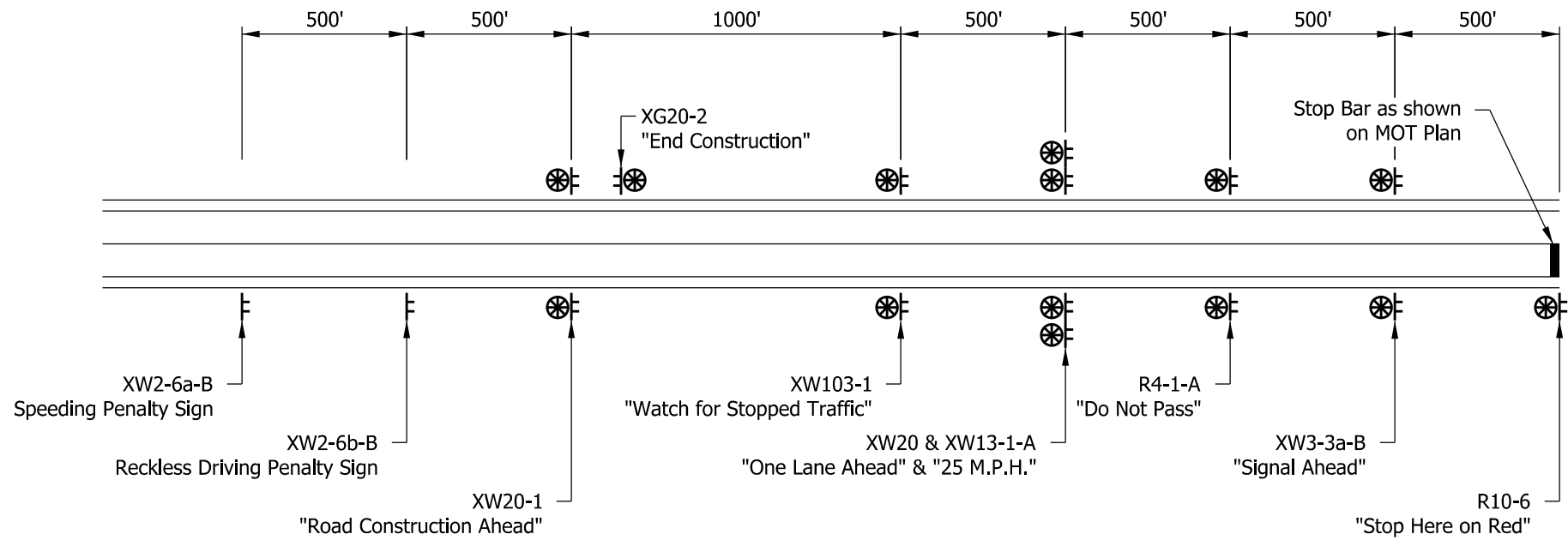
Recommended for Approval:

Date:

**MAINTENANCE OF TRAFFIC PLAN - PHASE II**  
**CONTRACT BRIDGE NO. 1**

**PURPOSE:**  
 The purpose of this sheet is to provide the layout of advance signs required for the phased maintenance of traffic detailed on the preceding sheets.

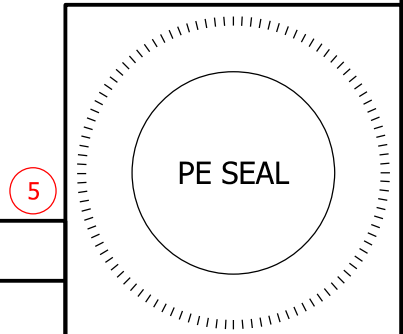
- REQUIRED ELEMENTS:**
- 1 Project Information required on every plan sheet:
    - Contract No.
    - Page No. and Total Pages
  - 2 Advance Sign Layout
  - 3 Legend
  - 4 Notes
  - 5 Signature Block and PE Seal



2 **ADVANCE SIGN LAYOUT**  
 (Typical Each Direction)  
 Not to Scale

- 3 **LEGEND**
- ⏏ Construction Sign
  - ⊗ Type "A" Low Intensity Light

4 **NOTES**  
 For Construction Sign Details, see Std. Dwg. 801-TCSN-12.



<b>ADVANCE SIGN LAYOUT                  CONTRACT BRIDGE NO. 1</b>	Recommended for Approval:
	Date:

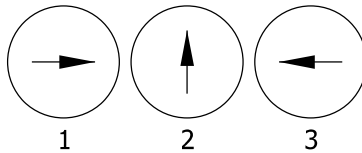
**NOTES** 4

One lane of traffic shall be maintained throughout the length of the project.  
 Contractor to provide 11' travel lane and 1' min. shoulder.  
 Construction Zone Design Speed = 35 mph.  
 Drums to be spaced at 20' in taper and 40' in tangent section.

**SIGNALIZATION NOTES** 5

All signal equipment to remain the property of the Contractor.  
 Timing information will be furnished by the District Traffic Engineer.

SIGNAL PHASING DIAGRAM



**LEGEND** 3

- ⊥ Construction Sign
- ⊗ Construction Warning Light, Type A
- ← Flashing Arrow Sign
- Channelizing Device
- ➔ Direction of Traffic
- ▣ Work Area
- Temporary Traffic Barrier
- ⚡ Temporary Traffic Signal & Support
- ⊥ Barricade, Type III-A

**PURPOSE:**

The purpose of this sheet is to provide notes, legend, and maintenance of traffic quantities for the MOT plan detailed on the preceding sheets.

**REQUIRED ELEMENTS:**

- 1 Project Information required on every plan sheet:  
 - Contract No.  
 - Page No. and Total Pages
- 2 Maintenance of Traffic Quantities for Detour Route Signs
- 3 Legend
- 4 Notes
- 5 Signalization Notes and Signal Phasing Diagram
- 6 Signature Block and PE Seal

2

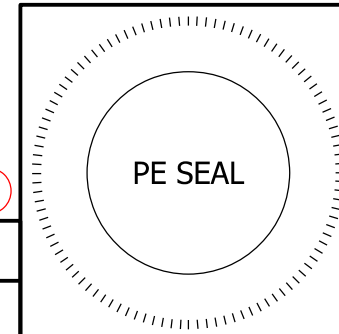
**MAINTENANCE OF TRAFFIC QUANTITIES**

Des No. 1800307 - Contract Bridge No. 1

Pay Item		Quantity		Total to be Paid
		Ph. I	Ph. II	
Construction Sign, Type A	EACH	16	16	16
Temporary Transverse Pavement Marking, Removable, 24"	LFT	24	24	24
Temporary Traffic Signal	LS	1	1	1
Temporary Traffic Barrier, Type 2	LFT	620	790	790
Barricade, Type III-A	LFT	228	168	228
Flashing Arrow Sign	DAY	2	2	2
Maintaining Traffic	LS	-	-	1

Typ. All Details, Notes, and Tables:  
 Detail Title: 12 Pt Text  
 Text Callouts: 9 Pt Text  
 Text Notes: 9 Pt Text  
 Table Data: 9 Pt Text

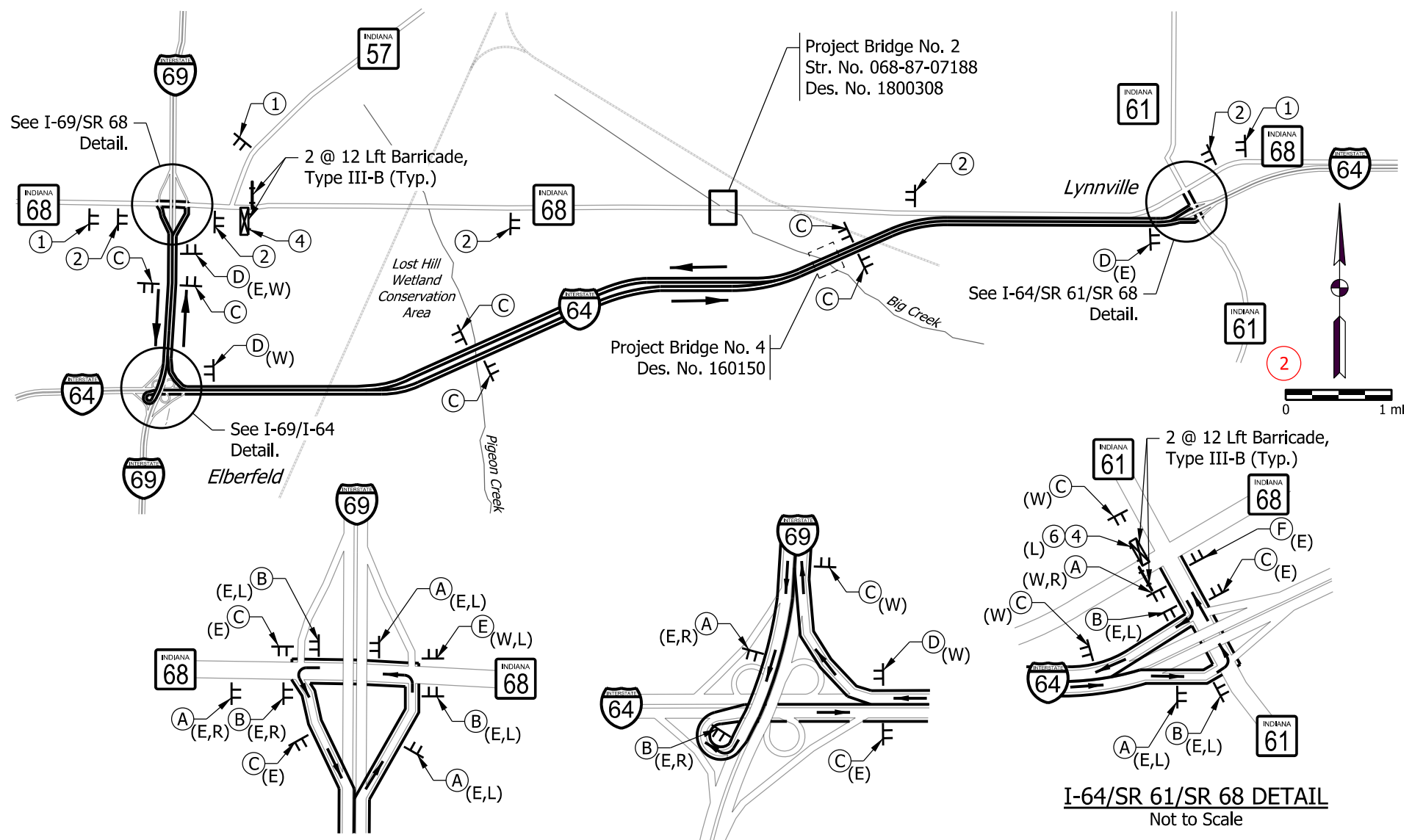
6



**MAINTENANCE OF TRAFFIC LEGEND & NOTES  
 CONTRACT BRIDGE NO. 1**

Recommended for Approval:

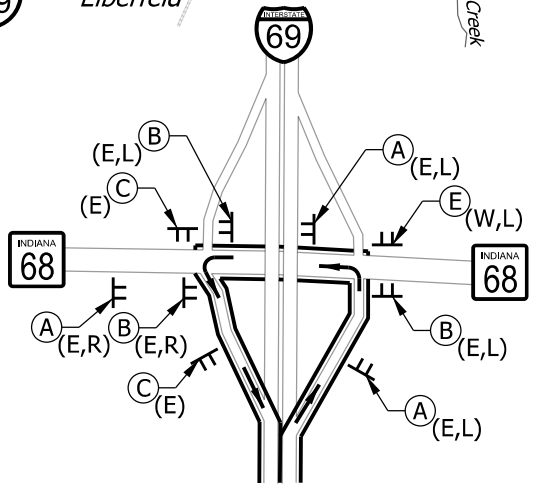
Date:



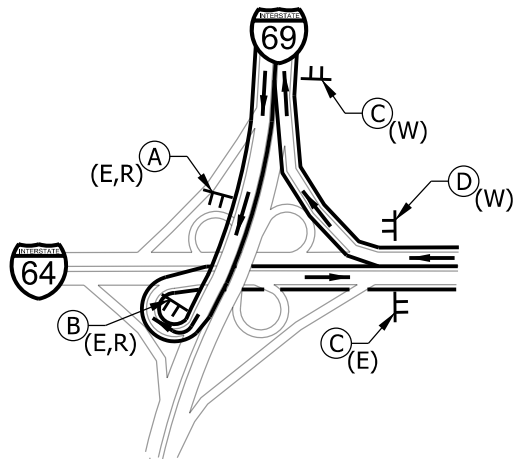
**PURPOSE:**

The purpose of this sheet is to show details and signage for a detour route when called for in the Maintenance of Traffic Summary table.

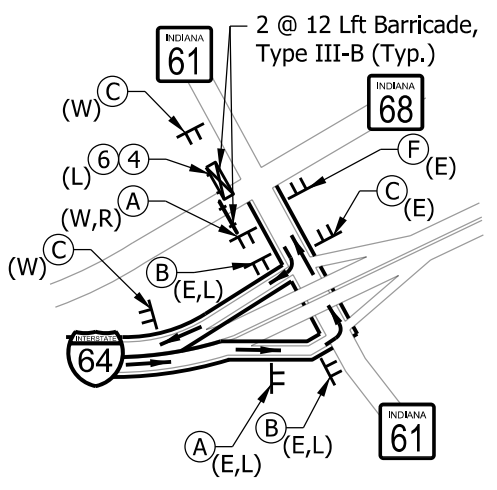
- REQUIRED ELEMENTS:**
- 1 Project Information required on every plan sheet:
    - Contract No.
    - Page No. and Total Pages
  - 2 Detour Map:
    - North Arrow (Typ. Not to Scale)
    - Project Area
    - Roads with labels
    - Detour Route Clearly Identified
    - Detour Traffic Direction Arrows
    - Barricades, Road Closure Sign Assemblies
    - Detour Route Markers
    - Construction Signs
  - 3 Notes
  - 4 Signature Block and PE Seal



**I-69/SR 68 DETAIL**  
Not to Scale



**I-69/I-64 DETAIL**  
Not to Scale



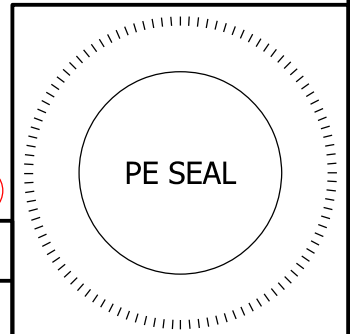
**I-64/SR 61/SR 68 DETAIL**  
Not to Scale

**NOTES** 3

For Maintenance of Traffic Legend and Quantities, see Sht. 13.

For Work Area Sign Layout Detail, see Sht. 18.

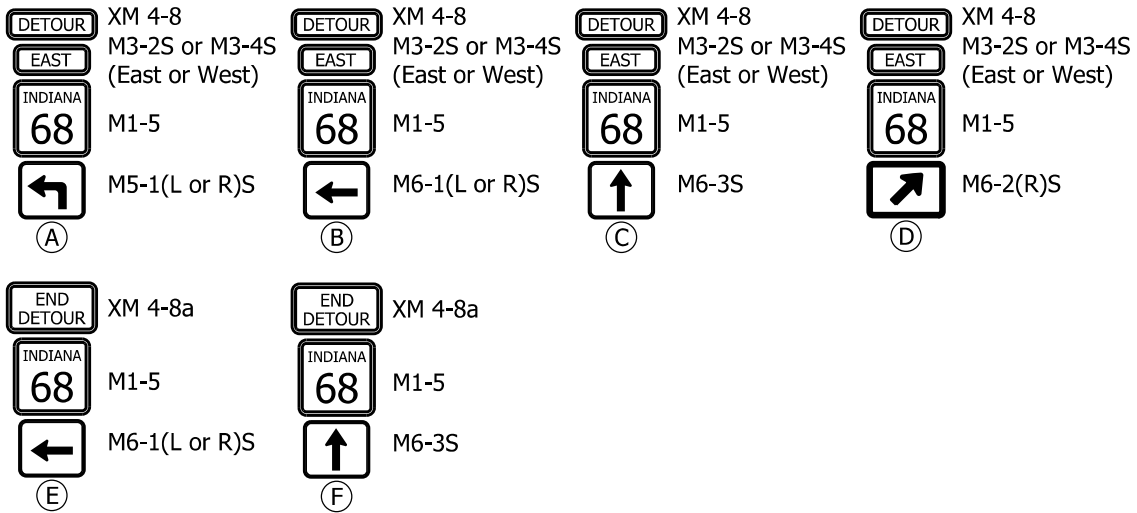
Typ. All Details and Notes:  
Detail Title: 12 Pt Text  
Text Callouts: 9 Pt Text  
Text Notes: 9 Pt Text



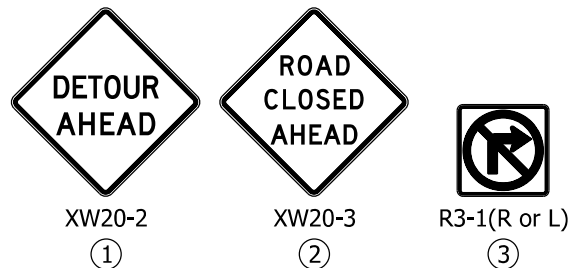
Recommended for Approval:

Date:

**DETOUR PLAN - S.R. 68**  
**CONTRACT BRIDGE NO. 2**



2 DETOUR ROUTE MARKERS



3 CONSTRUCTION SIGNS



7 NOTES

See Std. Dwg. 801-TCDT-01 for additional sign location details.

For Work Area Sign layout Detail, see Sht. 18.

4 ROAD CLOSURE SIGN ASSEMBLIES

Typ. All Details, Notes, and Tables:  
 Detail Title: 12 Pt Text  
 Text Callouts: 9 Pt Text  
 Text Notes: 9 Pt Text  
 Table Data: 9 Pt Text

6 LEGEND

- ⏏ Construction Sign
- ➔ Type III Barricade
- ⏏ Type III Barricade & Road Closure Sign Assembly
- ⦿ Type "A" Low Intensity Light
- E East
- W West
- L Left
- R Right

5 **MAINTENANCE OF TRAFFIC QUANTITIES**  
 Des No. 1800308 - Contract Bridge No. 2

Pay Item	Quantity
Construction Sign, Type A	24 Ea.
Detour Route Marker Assembly	31 Ea.
Road Closure Sign Assembly	5 Ea.
Barricade, Type III-A	96 Lft
Barricade, Type III-B	48 Lft
Maintaining Traffic	1 LS

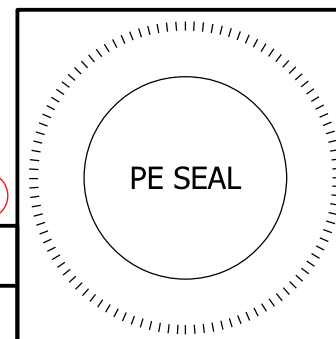
**PURPOSE:**

The purpose of this sheet is to provide illustrations, descriptions, and quantities of signs required for detour route detailed on the preceding sheet.

**REQUIRED ELEMENTS:**

- 1 Project Information required on every plan sheet:  
 - Contract No.  
 - Page No. and Total Pages
- 2 Detour Route Markers  
 (See IMUTCD for additional location information.)
- 3 Construction Signs  
 (See IMUTCD for additional location information.)
- 4 Road Closure Sign Assemblies  
 (See IMUTCD for additional location information.)
- 5 Maintenance of Traffic Quantities for Detour Route Signs
- 6 Legend
- 7 Notes
- 8 Signature Block and PE Seal

8



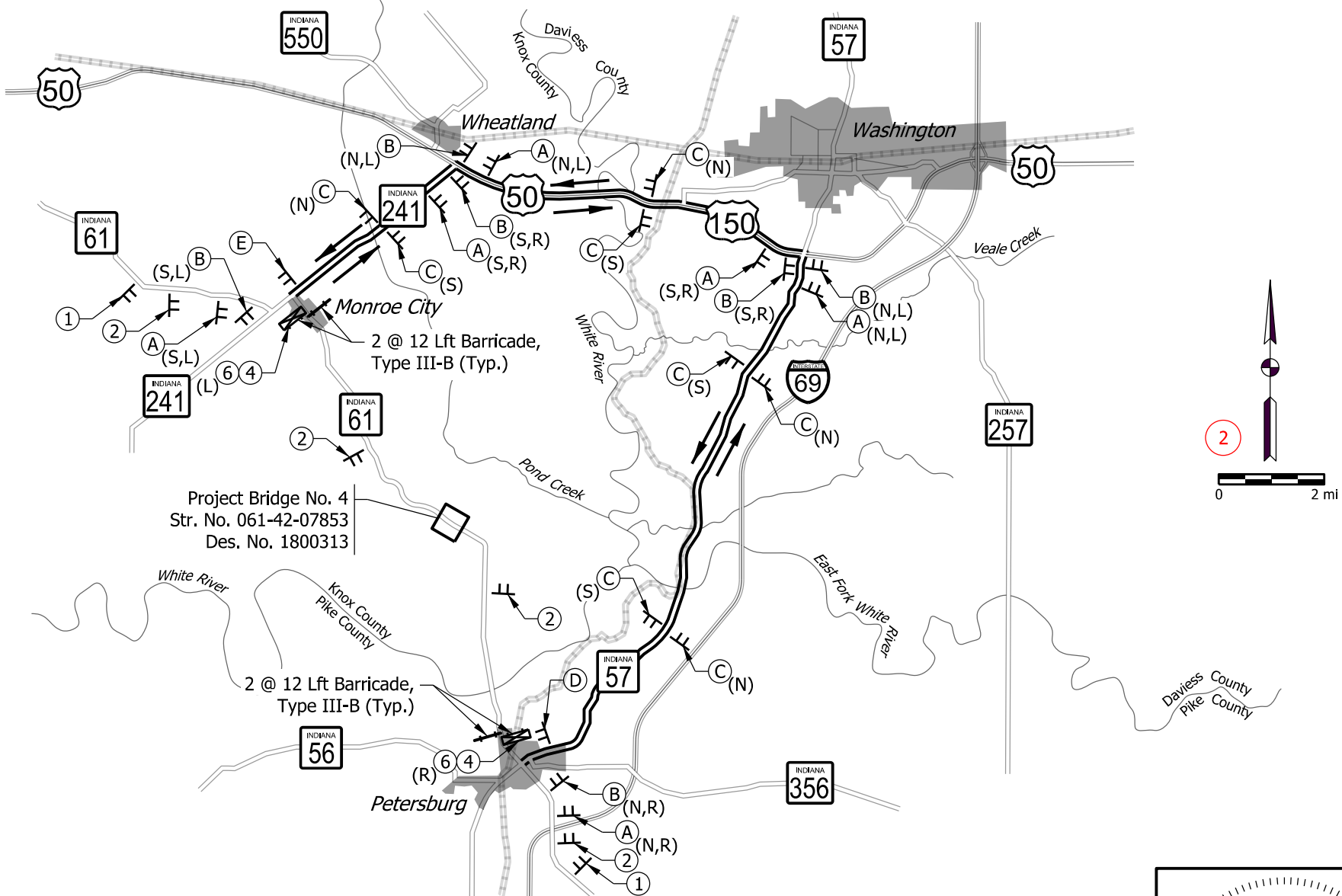
DETOUR SIGNS - S.R. 68  
 CONTRACT BRIDGE NO. 2

Recommended for Approval:

Date:

**PURPOSE:**  
 The purpose of this sheet is to show details and signage for a detour route when called for in the Maintenance of Traffic Summary table.

- REQUIRED ELEMENTS:**
- 1 Project Information required on every plan sheet:
    - Contract No.
    - Page No. and Total Pages
  - 2 Detour Map:
    - North Arrow (Typ. Not to Scale)
    - Project Area
    - Roads with labels
    - Detour Route Clearly Identified
    - Detour Traffic Direction Arrows
    - Barricades, Road Closure Sign Assemblies
    - Detour Route Markers
    - Construction Signs
  - 3 Notes
  - 4 Signature Block and PE Seal



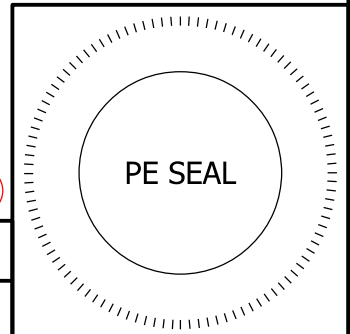
Project Bridge No. 4  
 Str. No. 061-42-07853  
 Des. No. 1800313

2 @ 12 Lft Barricade,  
 Type III-B (Typ.)

Typ. All Details and Notes:  
 Detail Title: 12 Pt Text  
 Text Callouts: 9 Pt Text  
 Text Notes: 9 Pt Text

**NOTES** 3

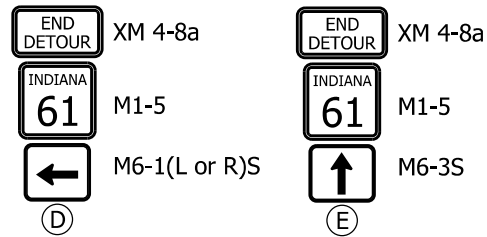
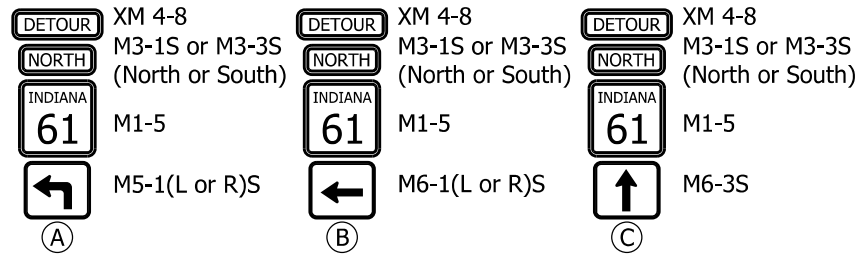
For Maintenance of Traffic Legend and Quantities, see Sht. 15.  
 For Work Area Sign Layout Detail, see Sht. 18.



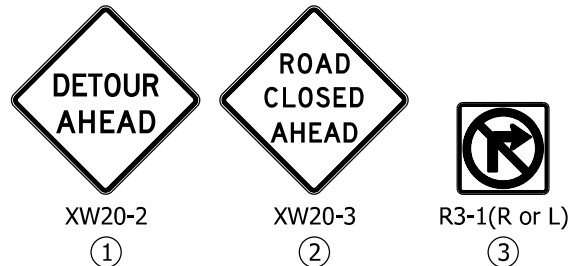
Recommended for Approval:  
 \_\_\_\_\_  
 Date:  
 \_\_\_\_\_

**DETOUR PLAN - S.R. 61  
 CONTRACT BRIDGE NO. 3**





2 DETOUR ROUTE MARKERS



3 CONSTRUCTION SIGNS



4 ROAD CLOSURE SIGN ASSEMBLIES

7 NOTES

See Std. Dwg. 801-TCDDT-01 for additional sign location details.

For Work Area Sign layout Detail, see Sht. 18.

Typ. All Details, Notes, and Tables:  
 Detail Title: 12 Pt Text  
 Text Callouts: 9 Pt Text  
 Text Notes: 9 Pt Text  
 Table Data: 9 Pt Text

6 LEGEND

- ⚡ Construction Sign
- ➔ Type III Barricade
- ⚡➔ Type III Barricade & Road Closure Sign Assembly
- ⦿ Type "A" Low Intensity Light
- N North
- S South
- L Left
- R Right

5 MAINTENANCE OF TRAFFIC QUANTITIES  
 Des No. 1800313 - Contract Bridge No. 3

Pay Item	Quantity
Construction Sign, Type A	22 Ea.
Detour Route Marker Assembly	22 Ea.
Road Closure Sign Assembly	6 Ea.
Barricade, Type III-A	96 Lft
Barricade, Type III-B	48 Lft
Maintaining Traffic	1 LS

**PURPOSE:**  
 The purpose of this sheet is to provide illustrations, descriptions, and quantities of signs required for detour route detailed on the preceding sheet.

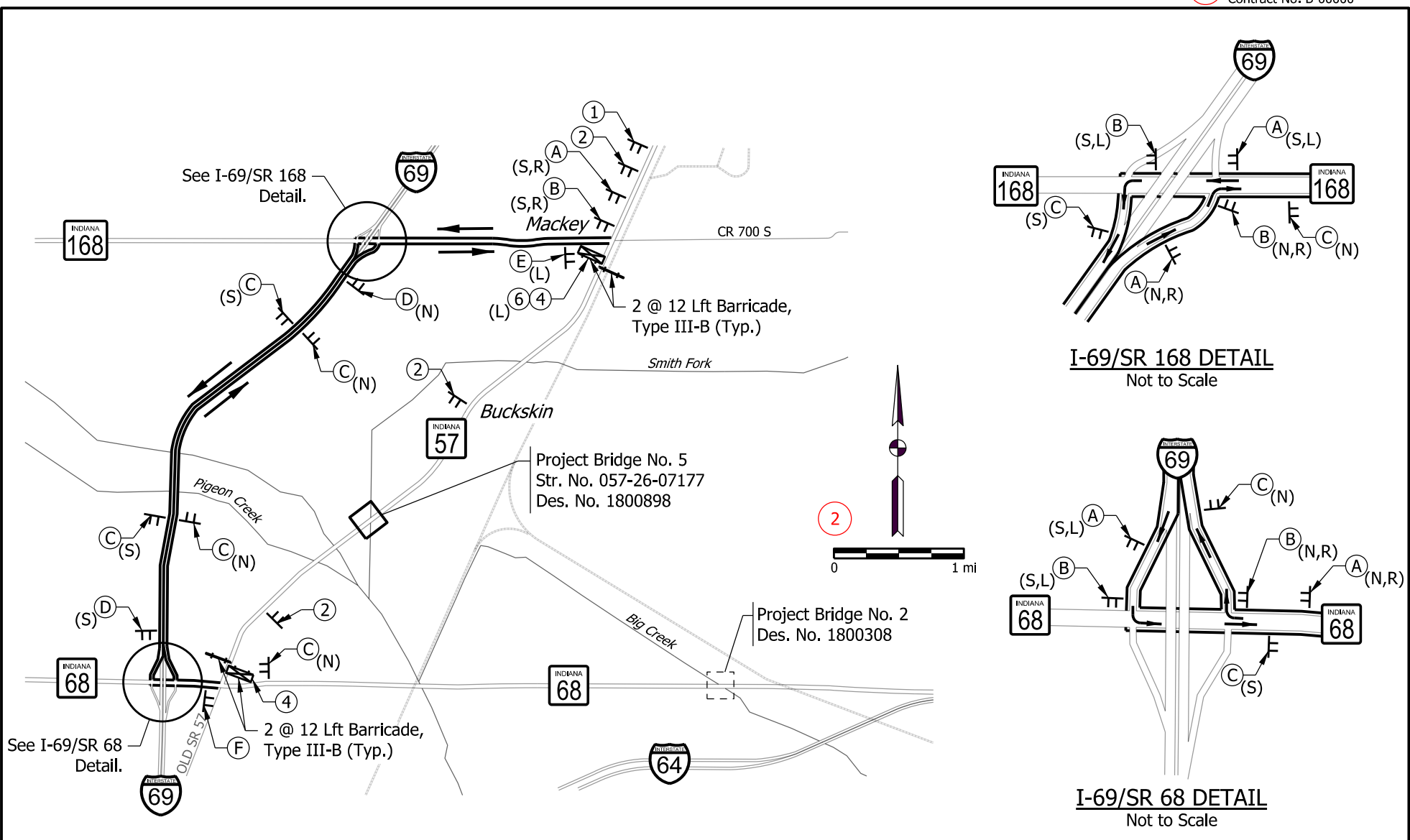
- REQUIRED ELEMENTS:**
- 1 Project Information required on every plan sheet:  
 - Contract No.  
 - Page No. and Total Pages
  - 2 Detour Route Markers  
 (See IMUTCD for additional location information.)
  - 3 Construction Signs  
 (See IMUTCD for additional location information.)
  - 4 Road Closure Sign Assemblies  
 (See IMUTCD for additional location information.)
  - 5 Maintenance of Traffic Quantities for Detour Route Signs
  - 6 Legend
  - 7 Notes
  - 8 Signature Block and PE Seal



Recommended for Approval:  
 \_\_\_\_\_  
 Date:  
 \_\_\_\_\_

DETOUR SIGNS - S.R. 61  
 CONTRACT BRIDGE NO. 3





**PURPOSE:**  
 The purpose of this sheet is to show details and signage for a detour route when included in the Maintenance of Traffic Summary table.

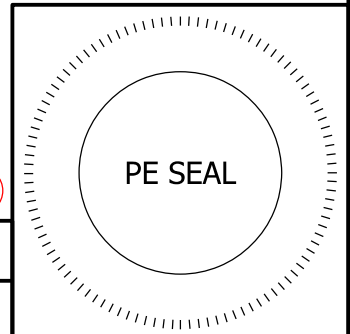
- REQUIRED ELEMENTS:**
- 1 Project Information required on every plan sheet:
    - Contract No.
    - Page No. and Total Pages
  - 2 Detour Map:
    - North Arrow (Typ. Not to Scale)
    - Project Area
    - Roads with labels
    - Detour Route Clearly Identified
    - Detour Traffic Direction Arrows
    - Barricades, Road Closure Sign Assemblies
    - Detour Route Markers
    - Construction Signs
  - 3 Notes
  - 4 Signature Block and PE Seal

**NOTES** 3

For Maintenance of Traffic Legend and Quantities, see Sht. 17.

For Work Area Sign Layout Detail, see Sht. 18.

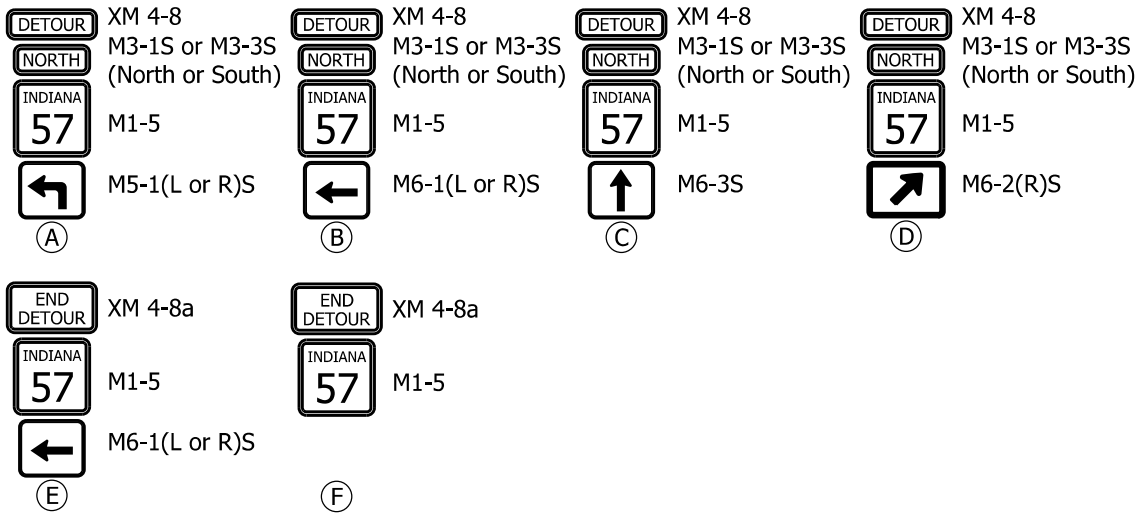
Typ. All Details and Notes:  
 Detail Title: 12 Pt Text  
 Text Callouts: 9 Pt Text  
 Text Notes: 9 Pt Text



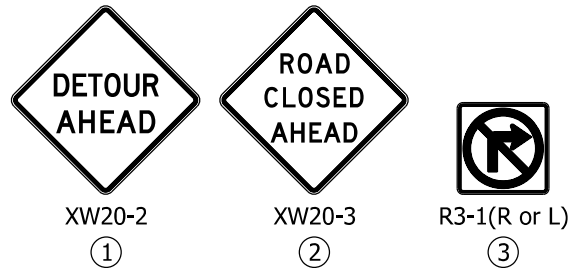
Recommended for Approval:

Date:

**DETOUR PLAN - S.R. 57  
 CONTRACT BRIDGE NO. 5**



2 DETOUR ROUTE MARKERS



3 CONSTRUCTION SIGNS



7 NOTES

See Std. Dwg. 801-TCDDT-01 for additional sign location details.

For Work Area Sign Layout Detail, see Sht. 18.

4 ROAD CLOSURE SIGN ASSEMBLIES

Typ. All Details, Notes, and Tables:  
 Detail Title: 12 Pt Text  
 Text Callouts: 9 Pt Text  
 Text Notes: 9 Pt Text  
 Table Data: 9 Pt Text

6 LEGEND

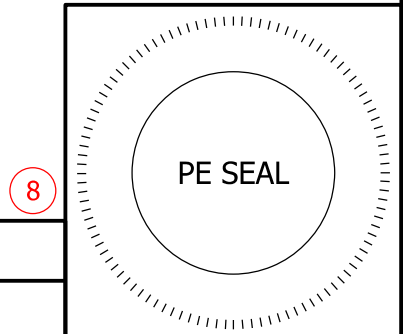
- ⏏ Construction Sign
- ➔ Type III Barricade
- ⏏ Type III Barricade & Road Closure Sign Assembly
- ⦿ Type "A" Low Intensity Light
- N North
- S South
- L Left
- R Right

5 MAINTENANCE OF TRAFFIC QUANTITIES  
 Des No. 1800898 - Contract Bridge No. 5

Pay Item	Quantity
Construction Sign, Type A	16 Ea.
Detour Route Marker Assembly	23 Ea.
Road Closure Sign Assembly	5 Ea.
Barricade, Type III-A	96 Lft
Barricade, Type III-B	48 Lft
Maintaining Traffic	1 LS

**PURPOSE:**  
 The purpose of this sheet is to provide illustrations, descriptions, and quantities of signs required for detour route detailed on the preceding sheet.

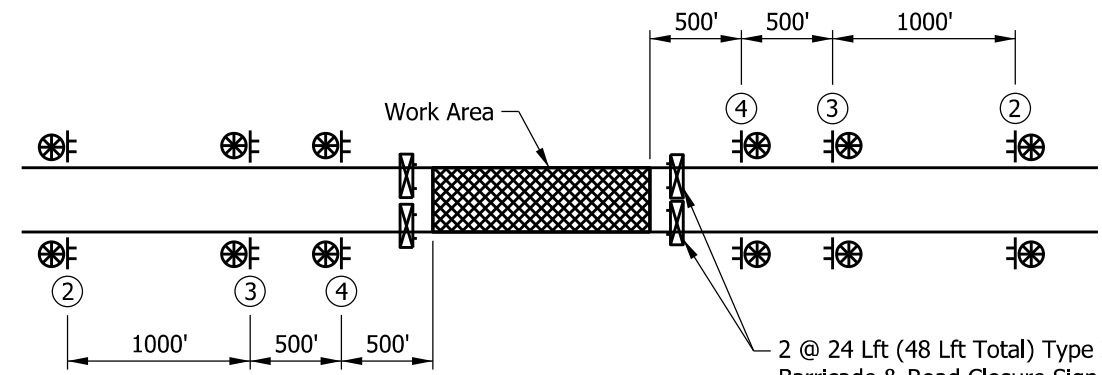
- REQUIRED ELEMENTS:**
- 1 Project Information required on every plan sheet:  
 - Contract No.  
 - Page No. and Total Pages
  - 2 Detour Route Markers  
 (See IMUTCD for additional location information.)
  - 3 Construction Signs  
 (See IMUTCD for additional location information.)
  - 4 Road Closure Sign Assemblies  
 (See IMUTCD for additional location information.)
  - 5 Maintenance of Traffic Quantities for Detour Route Signs
  - 6 Legend
  - 7 Notes
  - 8 Signature Block and PE Seal



8

Recommended for Approval:  
 \_\_\_\_\_  
 Date:  
 \_\_\_\_\_

DETOUR SIGNS - S.R. 57  
 CONTRACT BRIDGE NO. 5



2 **WORK AREA SIGN LAYOUT DETAIL**  
Not to Scale

Typ. All Details and Notes:  
Detail Title: 12 Pt Text  
Text Callouts: 9 Pt Text  
Text Notes: 9 Pt Text

5 **MAINTENANCE OF TRAFFIC QUANTITIES**  
Work Area Signs  
(Include in Location Quantities)

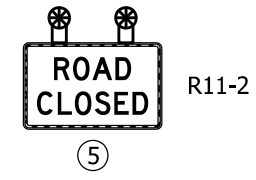
Pay Item	Quantity
Construction Sign, Type A	12 Ea.
Road Closure Sign Assembly	2 Ea.
Barricade, Type III-A	96 Lft

7 **NOTES**

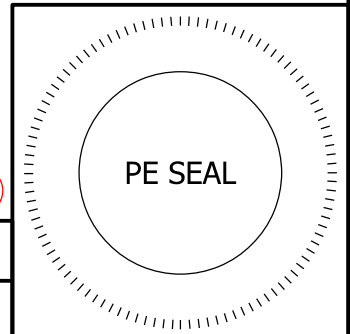
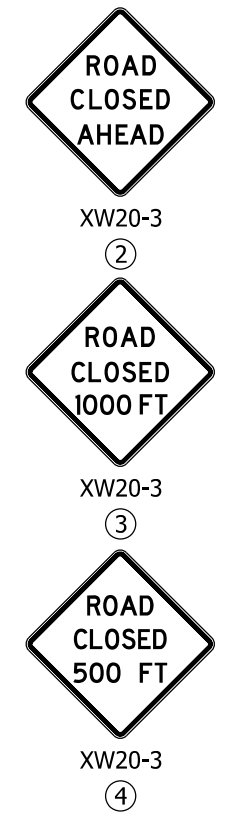
Worksite Added Penalty Signs to be placed as stated in RSP 801-R-542.  
For additional information, see Std. Dwg. 801-TCSC-01 through -03.

- 6 **LEGEND**
- ⏏ Construction Sign
  - ➡ Type III Barricade
  - ⏏ Type III Barricade & Road Closure Sign Assembly
  - ⊗ Type "A" Low Intensity Light
  - ▨ Work Area

3 **CONSTRUCTION SIGNS**



4 **ROAD CLOSURE SIGN ASSEMBLIES**



**PURPOSE:**  
The purpose of this sheet is to provide a detail and signage for the work area to accompany rural detours detailed on other sheets in the plans.

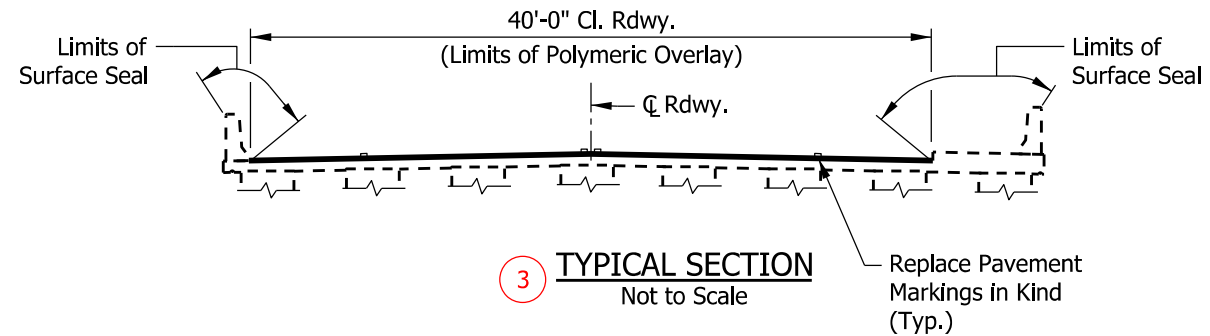
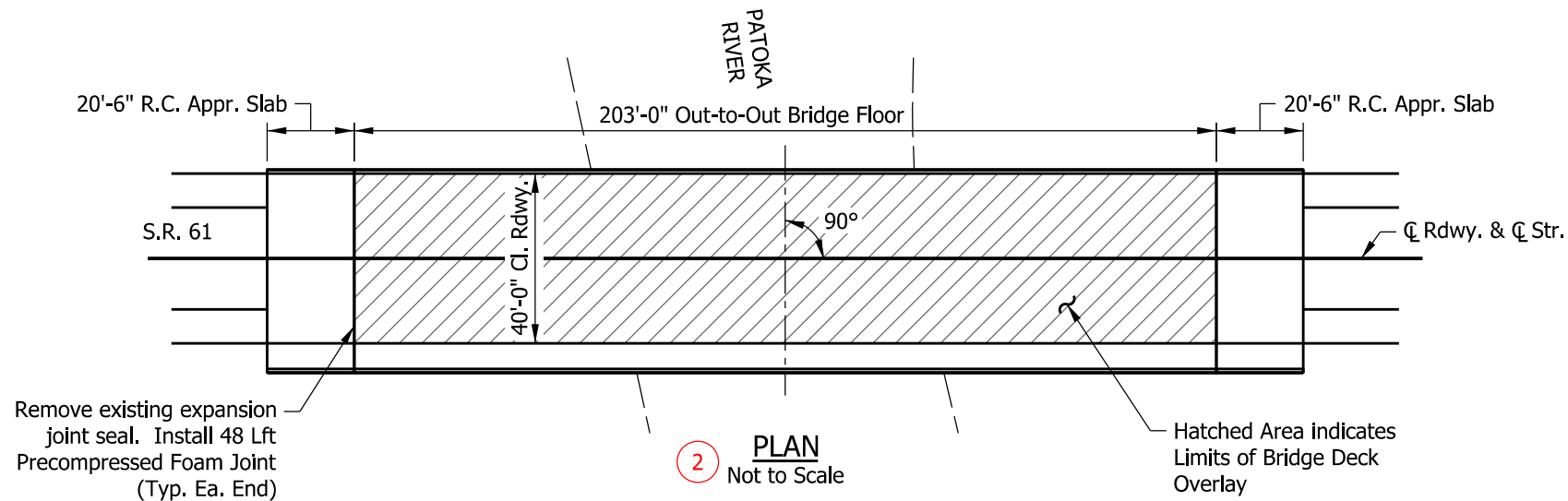
- REQUIRED ELEMENTS:**
- 1 Project Information required on every plan sheet:  
- Contract No.  
- Page No. and Total Pages
  - 2 Work Area Sign Layout Detail
  - 3 Construction Signs  
(See IMUTCD for additional location information.)
  - 4 Road Closure Sign Assemblies  
(See IMUTCD for additional location information.)
  - 5 Maintenance of Traffic Quantities for Work Area Signs (to be included in MOT Quantities for each Location)
  - 6 Legend
  - 7 Notes
  - 8 Signature Block and PE Seal

**MAINTENANCE OF TRAFFIC  
WORK AREA SIGN LAYOUT DETAIL**

Recommended for Approval:  
Date:

**PURPOSE:**  
 The purpose of this sheet is to provide information necessary to show limits of work and quantity of deck overlay.

- REQUIRED ELEMENTS:**
- 1 Project Information required on every plan sheet:  
 - Contract No.  
 - Page No. and Total Pages
  - 2 Plan View showing limits of work to be performed and bridge deck geometry.
  - 3 Typical Section showing limits of work to be performed and bridge superstructure general configuration.
  - 4 Quantity calculation for deck overlay.
  - 5 Notes
  - 6 Signature Block and PE Seal



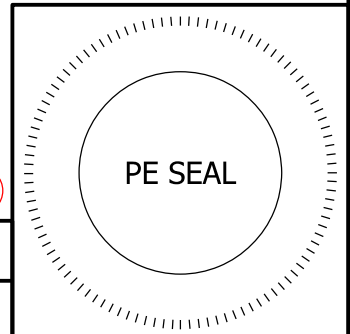
Typ. All Details, Notes, and Tables:  
 Detail Title: 12 Pt Text  
 Text Callouts: 9 Pt Text  
 Text Notes: 9 Pt Text  
 Table Data: 9 Pt Text

4 **BRIDGE DECK OVERLAY DATA**  
 Des No. 1800307 - Contract Bridge No. 1

Out-to-Out Bridge Floor Length (Ft)	Bridge Clear Roadway Width (Ft)	Deck Area (Sft)	Total Bridge Deck Overlay Area (Sys)
203.0	x 40.0	= 8120.0	903

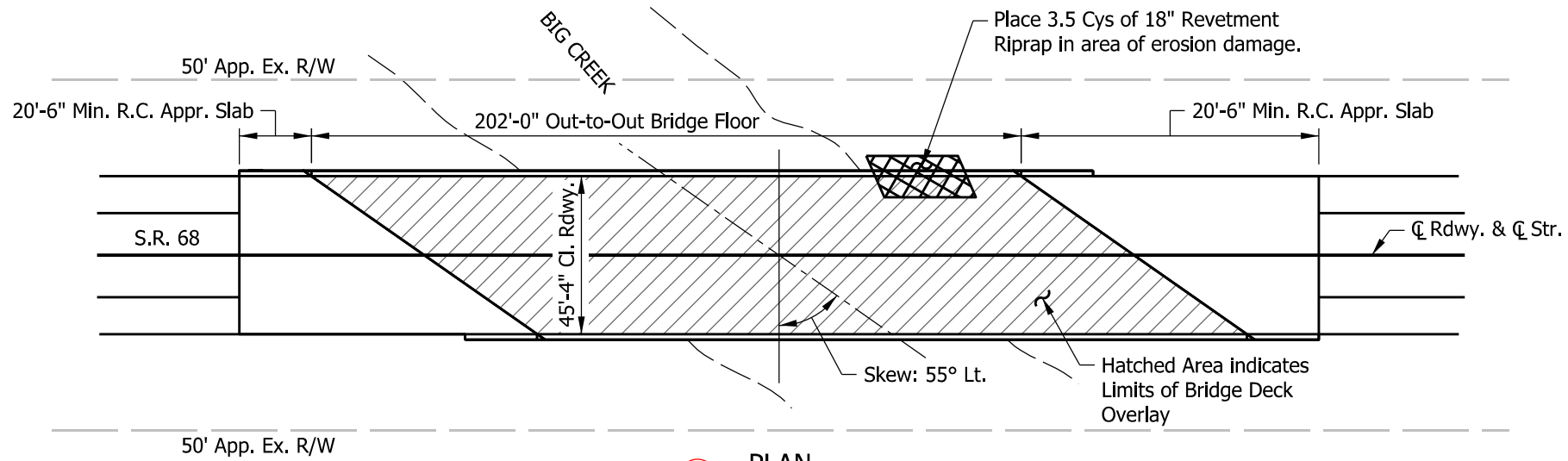
5 **NOTES**

For General Notes, see Sheet 3.

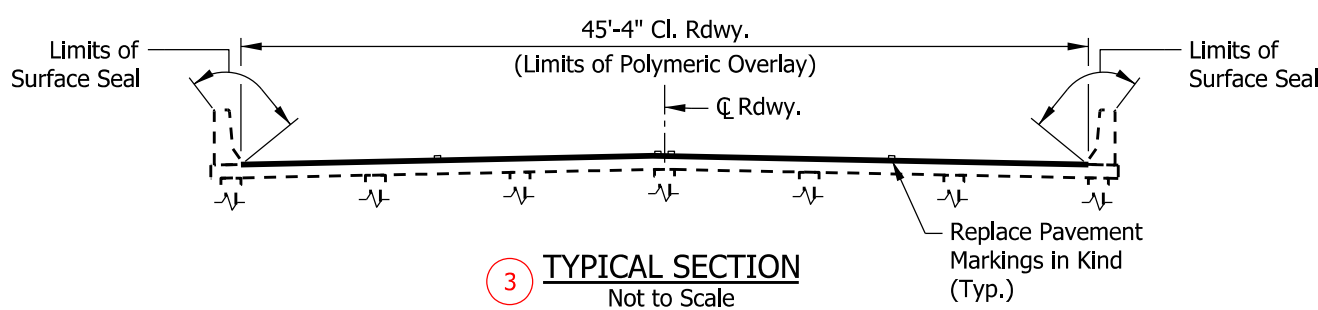


**CONSTRUCTION DETAILS  
 CONTRACT BRIDGE NO. 1**

Recommended for Approval:  
 \_\_\_\_\_  
 Date:  
 \_\_\_\_\_



2 **PLAN**  
Not to Scale



3 **TYPICAL SECTION**  
Not to Scale

Typ. All Details, Notes, and Tables:  
Detail Title: 12 Pt Text  
Text Callouts: 9 Pt Text  
Text Notes: 9 Pt Text  
Table Data: 9 Pt Text

4

BRIDGE DECK OVERLAY DATA				
Des No. 1800308 - Contract Bridge No. 2				
Out-to-Out Bridge Floor Length (Ft)	x	Bridge Clear Roadway Width (Ft)	=	Deck Area (Sft)
202.0	x	45.3	=	9150.6
				Total Bridge Deck Overlay Area (Sys)
				1,017

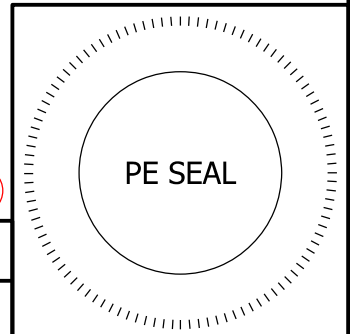
5 **NOTES**

For General Notes, see Sheet 3.

**CONSTRUCTION DETAILS  
CONTRACT BRIDGE NO. 2**

Recommended for Approval:

Date:



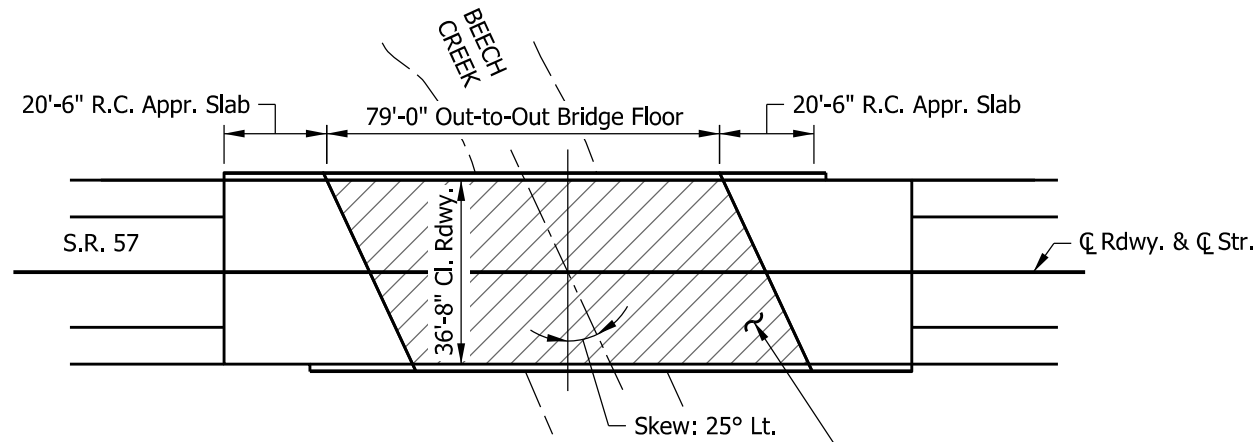
**PURPOSE:**

The purpose of this sheet is to provide information necessary to show limits of work and quantity of deck overlay.

- REQUIRED ELEMENTS:**
- 1 Project Information required on every plan sheet:  
- Contract No.  
- Page No. and Total Pages
  - 2 Plan View showing limits of work to be performed and bridge deck geometry.
  - 3 Typical Section showing limits of work to be performed and bridge superstructure general configuration.
  - 4 Quantity calculation for deck overlay.
  - 5 Notes
  - 6 Signature Block and PE Seal

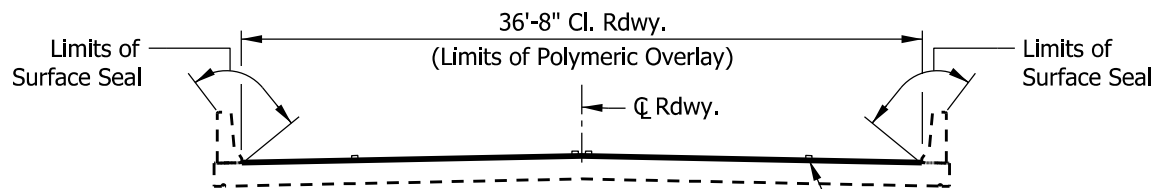
**SPECIAL CONSIDERATIONS:**

Show Existing R/W only when contract contains work requiring Contractor to be off of the existing pavement.



2 **PLAN**  
Not to Scale

Hatched Area indicates Limits of Bridge Deck Overlay



3 **TYPICAL SECTION**  
Not to Scale

Typ. All Details, Notes, and Tables:  
Detail Title: 12 Pt Text  
Text Callouts: 9 Pt Text  
Text Notes: 9 Pt Text  
Table Data: 9 Pt Text

4 **BRIDGE DECK OVERLAY DATA**  
Des No. 1800313 - Contract Bridge No. 3

Out-to-Out Bridge Floor Length (Ft)	Bridge Clear Roadway Width (Ft)	=	Deck Area (Sft)	Total Bridge Deck Overlay Area (Sys)
79.0	x 36.7	=	2899.3	323

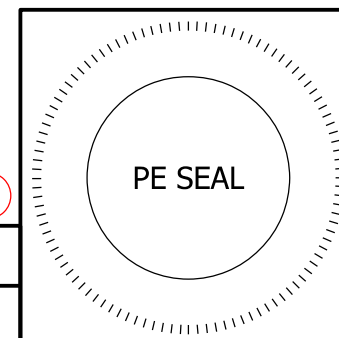
5 **NOTES**

For General Notes, see Sheet 3.

**CONSTRUCTION DETAILS  
CONTRACT BRIDGE NO. 3**

Recommended for Approval:

Date:



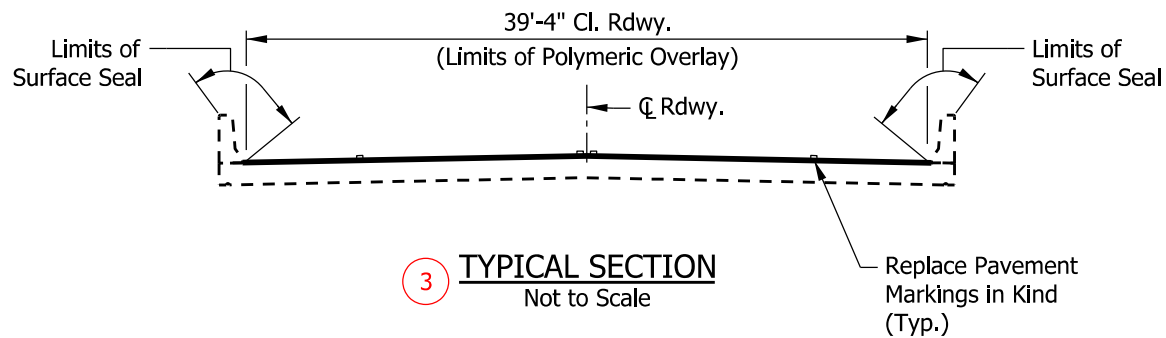
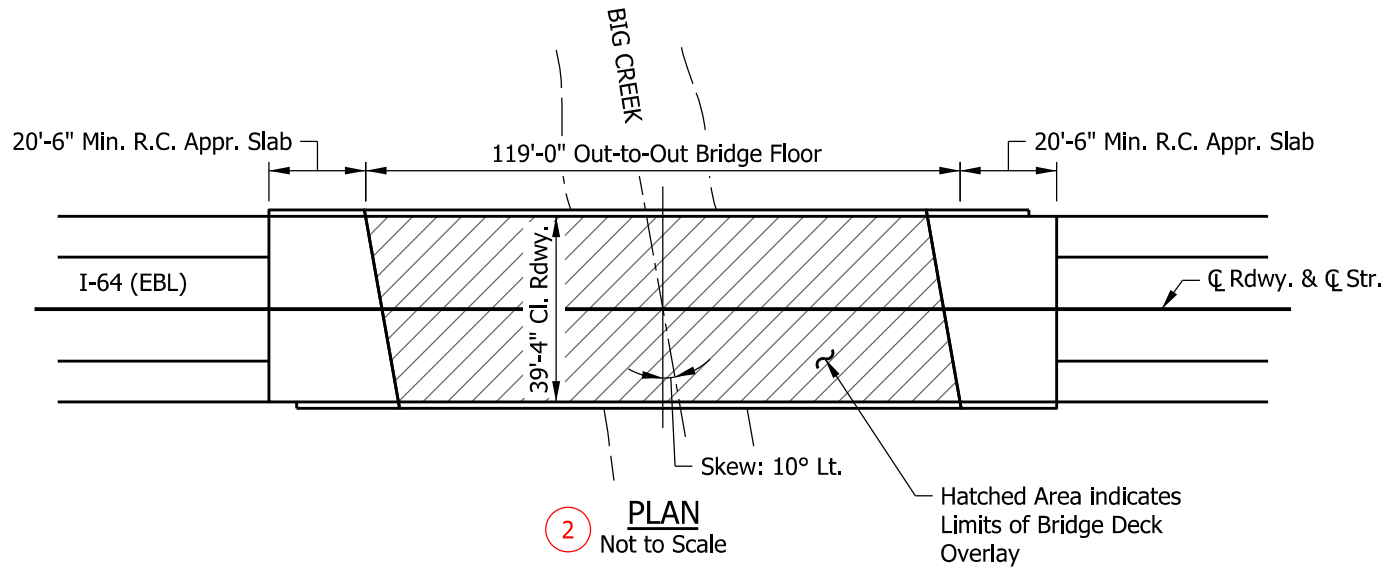
6

**PURPOSE:**

The purpose of this sheet is to provide information necessary to show limits of work and quantity of deck overlay.

**REQUIRED ELEMENTS:**

- 1 Project Information required on every plan sheet:
  - Contract No.
  - Page No. and Total Pages
- 2 Plan View showing limits of work to be performed and bridge deck geometry.
- 3 Typical Section showing limits of work to be performed and bridge superstructure general configuration.
- 4 Quantity calculation for deck overlay.
- 5 Notes
- 6 Signature Block and PE Seal



Typ. All Details, Notes, and Tables:  
Detail Title: 12 Pt Text  
Text Callouts: 9 Pt Text  
Text Notes: 9 Pt Text  
Table Data: 9 Pt Text

4 BRIDGE DECK OVERLAY DATA  
Des No. 1602150 - Contract Bridge No. 4

Out-to-Out Bridge Floor Length (Ft)	x	Bridge Clear Roadway Width (Ft)	=	Deck Area (Sft)	Total Bridge Deck Overlay Area (Sys)
119.0	x	39.3	=	4676.7	520

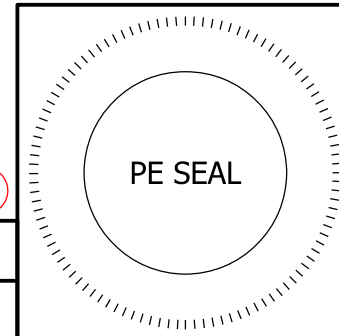
5 NOTES

For General Notes, see Sheet 3.

CONSTRUCTION DETAILS  
CONTRACT BRIDGE NO. 4

Recommended for Approval:

Date:

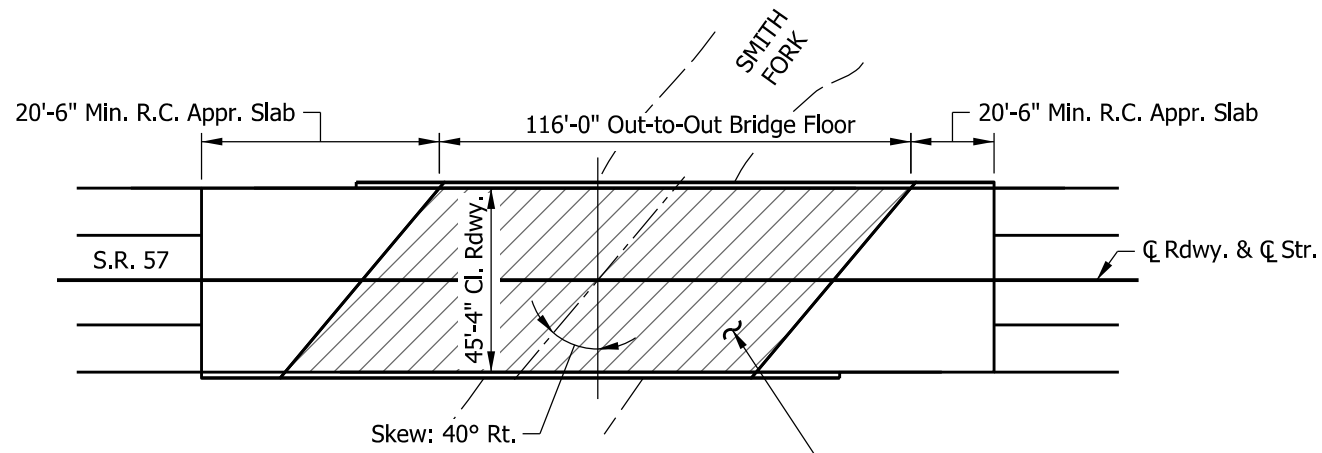


PURPOSE:

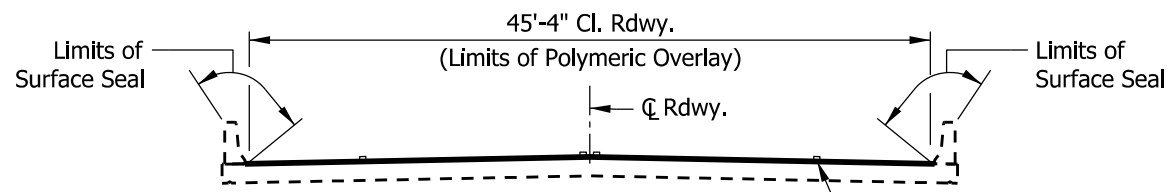
The purpose of this sheet is to provide information necessary to show limits of work and quantity of deck overlay.

REQUIRED ELEMENTS:

- 1 Project Information required on every plan sheet:
  - Contract No.
  - Page No. and Total Pages
- 2 Plan View showing limits of work to be performed and bridge deck geometry.
- 3 Typical Section showing limits of work to be performed and bridge superstructure general configuration.
- 4 Quantity calculation for deck overlay.
- 5 Notes
- 6 Signature Block and PE Seal



2 **PLAN**  
Not to Scale



3 **TYPICAL SECTION**  
Not to Scale

Typ. All Details, Notes, and Tables:  
Detail Title: 12 Pt Text  
Text Callouts: 9 Pt Text  
Text Notes: 9 Pt Text  
Table Data: 9 Pt Text

4 **BRIDGE DECK OVERLAY DATA**  
Des No. 1800898 - Contract Bridge No. 5

Out-to-Out Bridge Floor Length (Ft)	x	Bridge Clear Roadway Width (Ft)	=	Deck Area (Sft)	Total Bridge Deck Overlay Area (Sys)
116.0	x	45.3	=	5254.8	584

5 **NOTES**

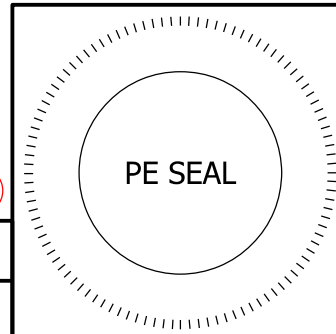
For General Notes, see Sheet 3.

**CONSTRUCTION DETAILS  
CONTRACT BRIDGE NO. 5**

Recommended for Approval:

Date:

6



**PURPOSE:**  
The purpose of this sheet is to provide information necessary to show limits of work and quantity of deck overlay.

- REQUIRED ELEMENTS:**
- 1 Project Information required on every plan sheet:  
- Contract No.  
- Page No. and Total Pages
  - 2 Plan View showing limits of work to be performed and bridge deck geometry.
  - 3 Typical Section showing limits of work to be performed and bridge superstructure general configuration.
  - 4 Quantity calculation for deck overlay.
  - 5 Notes
  - 6 Signature Block and PE Seal



2 PERMANENT PAVEMENT MARKINGS QUANTITIES

Contract Bridge No.	Bridge File Number	Line, Paint			Line, Multi-Component			Snow-Plowable Raised Pavement Marker	Remarks
		Solid White 4 in.	Solid Yellow 4 in.	Broken Yellow 4 in.	Solid White 4 in.	Solid Yellow 4 in.	Broken White 5 in.		
		LFT	LFT	LFT	LFT	LFT	LFT		
1	Des No 1800307 061-63-07662	488	488					3	
2	Des No 1800308 068-87-07188	404	404					3	
3	Des No 1800313 061-42-07853	158	158					1	
4	Des No 1602150 I64-35-05597 BEBL				119	119.00	30	2	
5	Des No 1800898 057-26-07177	390		49.00				3	
TOTALS		1440	1050	49	119	119	30	12	

\*\* Estimated quantity

**PURPOSE:**  
The purpose of this sheet is to provide a summary of quantities for each bridge in the contract.

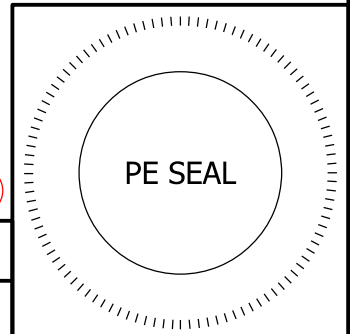
- REQUIRED ELEMENTS:**
- 1 Project Information required on every plan sheet:
    - Contract No.
    - Page No. and Total Pages
  - 2 Permanent Pavement Markings Quantities:
    - Paint
    - Multi-Component
    - Snowplowable Raised Pavement Markers  
(See Tables.xls for additional instructions.)
  - 3 Notes
  - 4 Signature Block and PE Seal

Typ. All Tables and Notes on Pavement Markings Summary Sheet:  
Table Title: 12 Pt Text  
Table Data: 9 Pt Text  
Text Notes: 9 Pt Text

**NOTES** 3

The Contractor shall determine the quantities upon which to base its bid.

4



PAVEMENT MARKINGS SUMMARY SHEET

Recommended for Approval:  
*ENG SIGNATURE*  
 Date: \$SIG\_DT\$

2

SUMMARY OF BRIDGE QUANTITIES

Contract Bridge No.	Bridge File Number	Polymeric Concrete Bridge Deck Overlay	Bridge Deck Patching, Partial Depth	Surface Seal **	Riprap, Revetment	Joints in PCCP Saw and Seal	Barrier Delineator	Pre-Compressed Foam Joint	Geotextiles	Remarks
		SYS	SFT	SFT	CYS	LFT	EACH	LFT	SYS	
1	Des No 1800307 061-63-07662	903	45	3100				96		
2	Des No 1800308 068-87-07188	1017	50	6540	3.5					
3	Des No 1800313 061-42-07853	323	15	3000						
4	Des No 1602150 I64-35-05597 BEBL	520	25	3040						
5	Des No 1800898 057-26-07177	584	30	1140						
TOTALS		3347	165	16820	3.5			96		

\*\* Estimated quantity

**PURPOSE:**  
The purpose of this sheet is to provide a summary of quantities for each bridge in the contract.

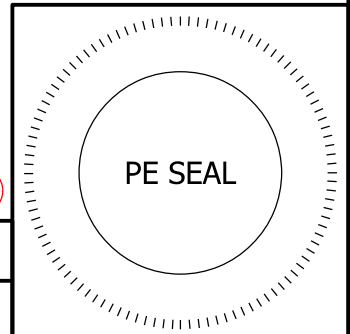
- REQUIRED ELEMENTS:**
- 1 Project Information required on every plan sheet:
    - Contract No.
    - Page No. and Total Pages
  - 2 Summary of Bridge Quantities:
    - Bridge Deck Overlay and related Quantities (See Tables.xls for additional instructions.)
  - 3 Notes
  - 4 Signature Block and PE Seal

Typ. All Tables and Notes on Bridge Summary Sheet:  
Table Title: 12 Pt Text  
Table Data: 9 Pt Text  
Text Notes: 9 Pt Text

**NOTES** 3

The Contractor shall determine the quantities upon which to base its bid.

4



BRIDGE SUMMARY SHEET

Recommended for Approval:  
*ENG SIGNATURE*  
 Date: \$SIG\_DT\$