

# INDOT Bridge Design Conference Storm Water 2019

Michele Meyer, INDOT



## Storm Water Regulations

---

### Interconnected permits

- 401
- 404
- Construction in a Floodway
- Rule 5
- Rule 13

### INDOT Storm Water Program

- Construction
- Design
- Facilities
- Maintenance
- Illicit Discharge
- Mapping



## MS4 Program: Only Rain goes down the Drain



NextLevel  
INDIANA

3

## Stormwater And Bridges

- Bridge Demos
- Bridge Resurfacing
- Hydro-demo
- Saw Cutting
- Deck Drains
- Post Construction  
Hazardous Waste Traps
- Pipe Liners: Unique Special  
Provision
- Means and Methods



NextLevel  
INDIANA

# Storm Water Control



**Storm Water Diversion:**  
**Moving storm water around the disturbed area**



# Storm Water Control



**Manage the storm water, direct it where you want it.**



# Erosion Control



Keeping soil in place.



tLevel  
NA

7

# Erosion Control



8

# Erosion Control



# Sediment Control

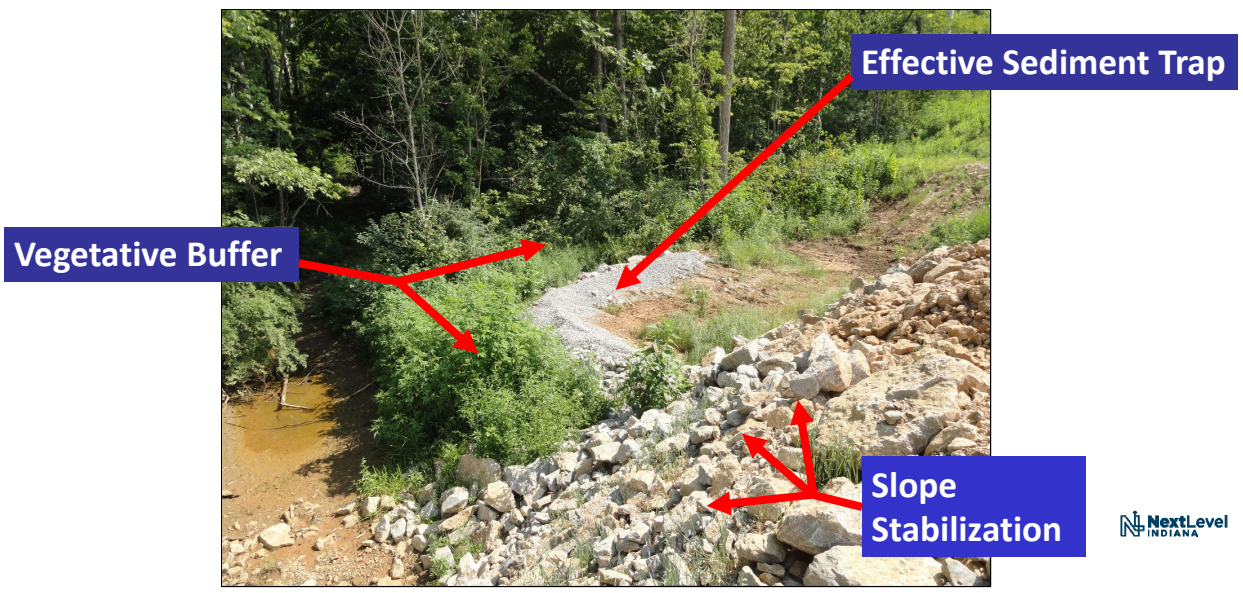


Sediment trap is full of sediment

Soil has moved off site into the adjacent creek



# Sediment Control



# Sediment Control



## Sediment Control

Stream protected from off-site sediment



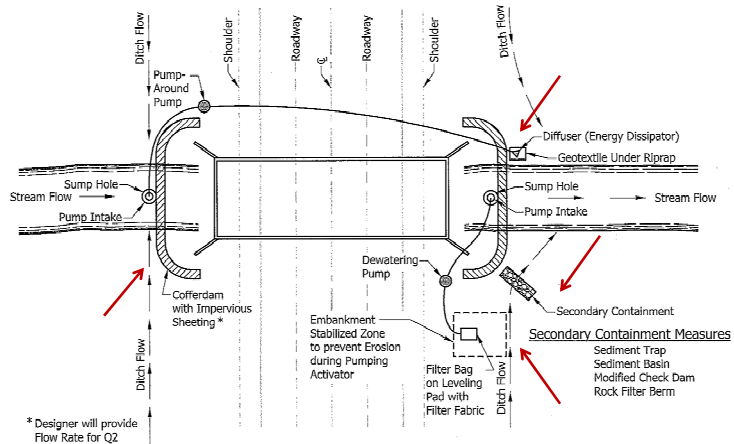
 NextLevel  
INDIANA

## BMPs for Bridge Work

- Silt Fence
- Filter Sock
- Inlet Protection
- Slope drains
- Pollution Controls
- Erosion Control Blanket
- Dewatering
- Cofferdams

 NextLevel  
INDIANA

# Stream Impacts



\* Designer will provide Flow Rate for Q2

PUMP AROUND AND DEWATERING DETAILS



# Stream Impacts



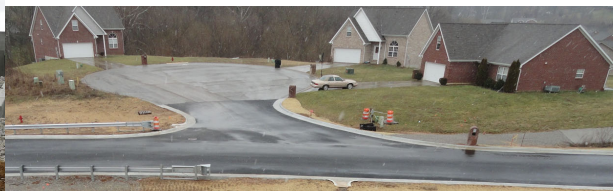


# Stream Impacts

Turbidity  
Curtains



# Super-Elevated Curve Protection



# Illicit Discharges



NextLevel INDIANA

# Illicit Discharges



NextLevel INDIANA

# Illicit Discharges



NextLevel INDIANA

# Illicit Connections/discharge



NextLevel INDIANA

## New Permits Coming .....

---

- New Rule 5
- New Rule 13

What does that mean?



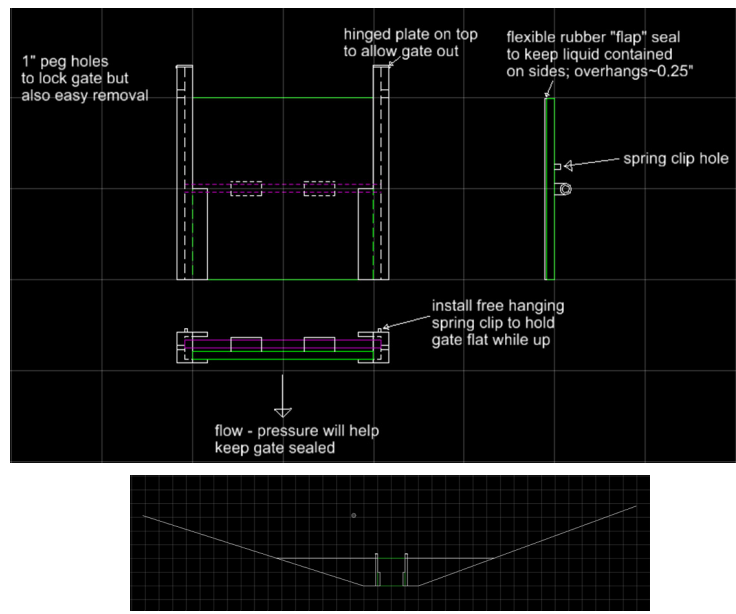
## Post Construction BMPs

---

- Hazardous Waste Traps
- Water Quantity BMPs
- Water Quality BMPs



# Post Construction BMPs



# Sloths Gate



## Upcoming Trainings

---

- May 21
- July 16
- Sept 17
- Nov 19

All at the Traffic Management Center in Indianapolis



## Questions?

---

Michele Meyer  
Indiana Department of Transportation  
[michelemeyer@indot.in.gov](mailto:michelemeyer@indot.in.gov)  
317-232-5114

