

BRIDGE CONTRACT No. 1576

BRIDGES OVER 20 FT. SPAN			
FED. ROAD DIST. NO.	STATE	PROV. NO.	TOTAL
7	IND.	26	1937
			14

DRAWING NUMBER	STRUCTURE				SUBJECT	BRIDGE CONTRACT NO.
	NO.	TYPE	SPAN	OVER		
1					Index and Title Sheet	1576
2					Road Plan & Profile	
3					Temporary Bridge Details	
4	G-3105	R.C. Arch	1 @ 35'	Honey Creek	Layout	
5					General Plan, Bend, Drags, & Bill of Mats.	
6					Details	
7					Concrete Handrail Details (Rev. 4-17-37)	
8					Sheet Summary	
9					Sheet Cross Sections	
10					Miscell. Road Sids - Sheet 'A' (Feb. 1935)	
11					"Sheet 'B' (Rev. 3-9-37)	
12					"Sheet 'D' (Rev. 5-23-36)	
13					Flexible Steel Plate Guard Rail (May 1935)	
14					Detour, Barricades, etc. (Rev. Jan. 8, 1936)	

STATE OF INDIANA
STATE HIGHWAY COMMISSION

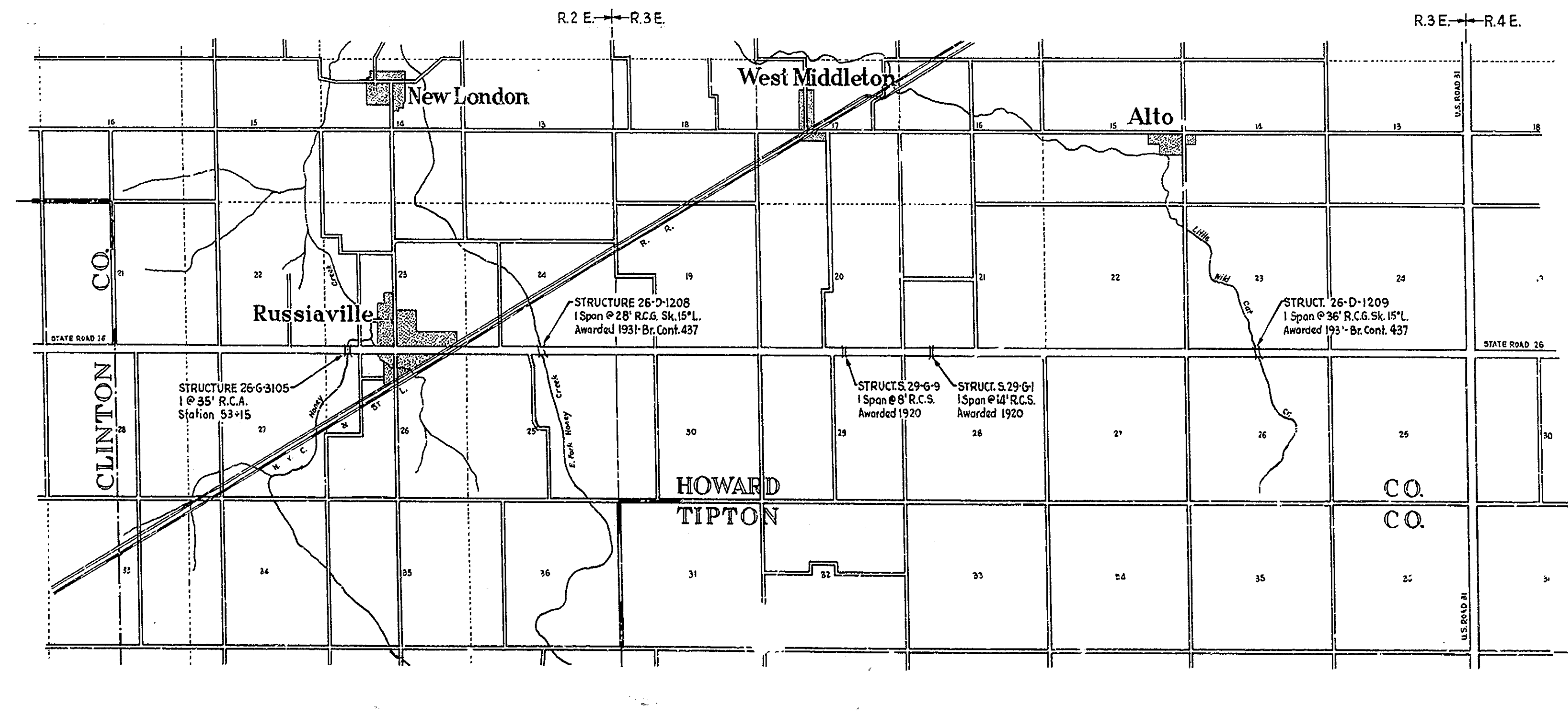
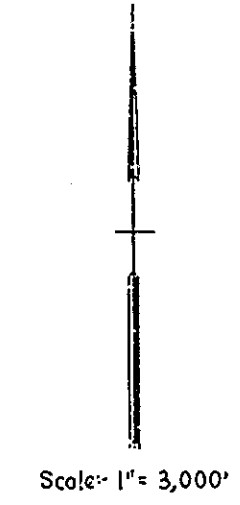
BRIDGE PLANS

FOR SPANS OVER 20 FEET

ON

STATE ROAD NO. 26 SECTION G

STRUCTURE No. 26-G-3105 IS LOCATED ON BOUNDARY LINE BETWEEN SECTIONS 23 & 26, TWP. 23 NORTH, RANGE 2 EAST, ON STATE ROAD 26 OVER HONEY CREEK JUST WEST OF RUSSIAVILLE IN HOWARD COUNTY.



STATE HIGHWAY COMMISSION STANDARD
BRIDGE SPECIFICATIONS DATED SEPTEMBER 1936
TO BE USED IN THESE PLANS.

Rev. 9-2-37 Encl. Sheets 2 & 4

APPROVED AND ADOPTED JULY 20, 1937
BY STATE HIGHWAY COMMISSION OF INDIANA

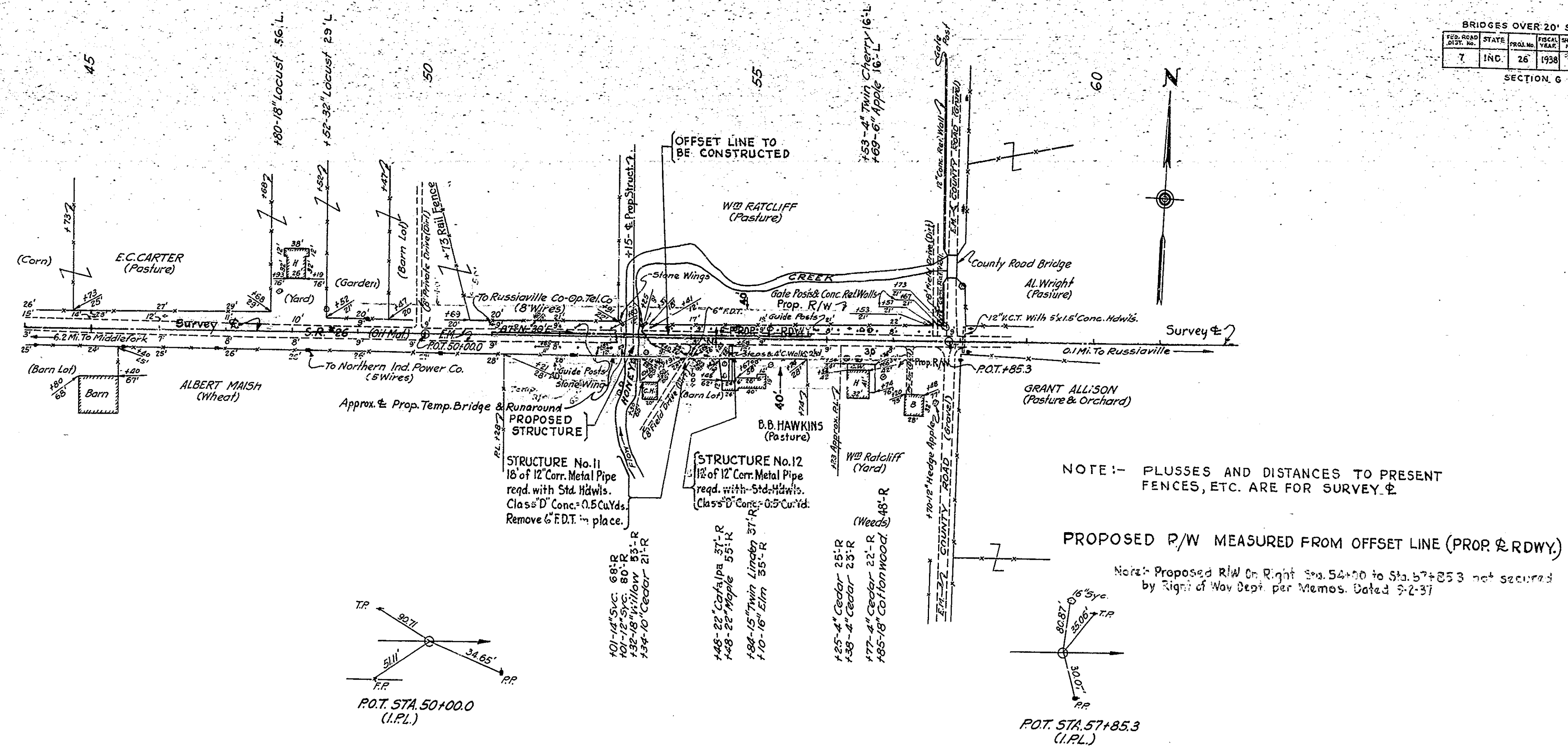
Earl C. ...
CHIEF ENGINEER, STATE HIGHWAY COMMISSION OF INDIANA

APPROVED JULY 20, 1937

W. H. ...
CHIEF ENGINEER, STATE HIGHWAY COMMISSION OF INDIANA

BRIDGES OVER 20' SPAN					
FED. ROAD DIST. NO.	STATE	PROJ. YEAR	SHEET NO.	TOTAL SHEETS	
7	IND.	26	1938	2	14

SECTION 6



NOTE:- PLUSSES AND DISTANCES TO PRESENT FENCES, ETC. ARE FOR SURVEY ☐

PROPOSED R/W MEASURED FROM OFFSET LINE (PROP. & RDWY.)

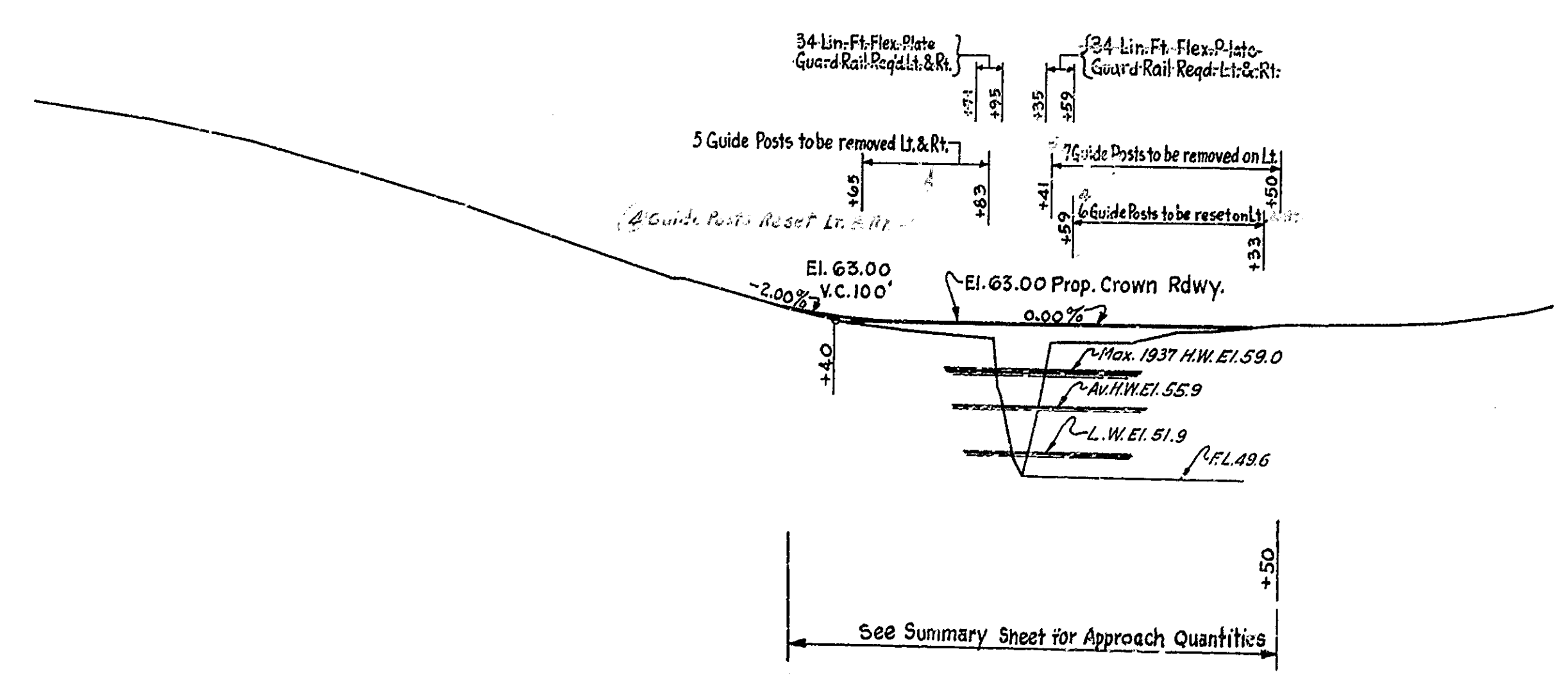
Note:- Proposed R/W On Right Sta. 54+00 to Sta. 57+05.3 not secured by Right of Way Dept. per Memos. Dated 2-2-37

B.M. #1 - Elev. 75.00 - Boat spike in 18" Locust 56' L. Sta. 47+80
 B.M. #2 - Elev. 56.61 - " " 18" Willow 53' R. Sta. 53+32
 B.M. #3 - Elev. 66.33 - (X) Cut in Conc. Walk 34' R. Sta. 56+34

NOTE:- Proposed Grade to be adjusted in field, if necessary to meet present grade at sta. 51+00 and sta. 55+50

30
80
70
60
50
40

90
80
70
60
50
40



See Summary Sheet for Approach Quantities

R.E. Portenberger 6-23-37
 A.L. Kessler 7-3-37
 W.H. Wood 7-8-37
 J.J. Money 7-11-37
 C.G. Sumner 7-15-37
 Inked
 Checked

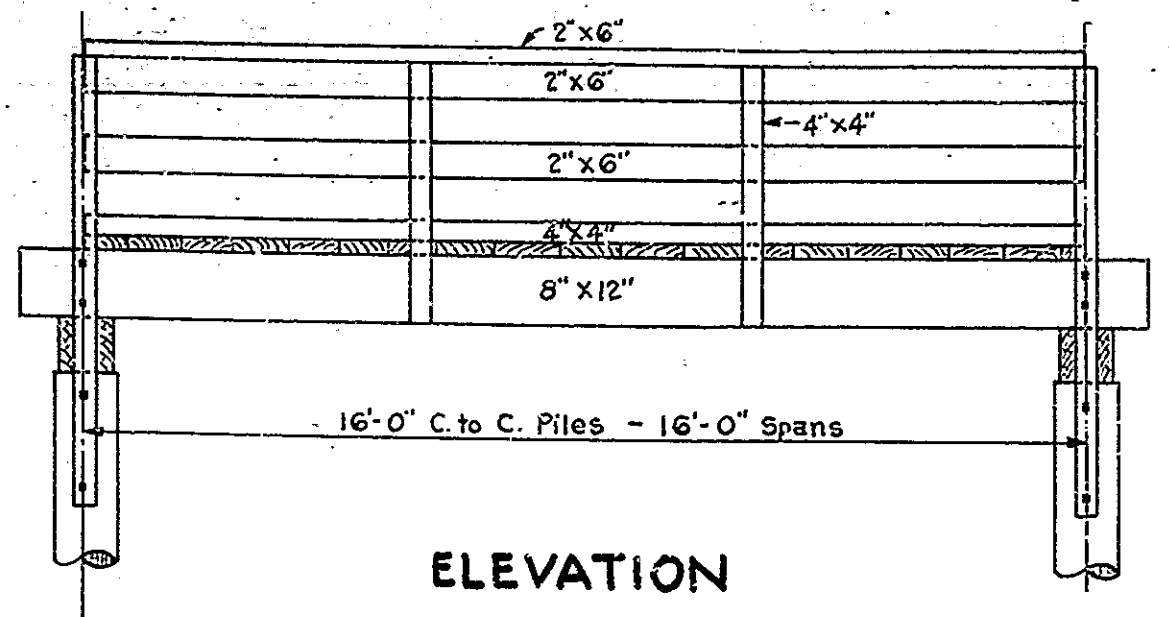
R.E. Portenberger 6-23-37
 A.L. Kessler 7-3-37
 W.H. Wood 7-8-37
 J.J. Money 7-11-37
 C.G. Sumner 7-15-37
 Inked
 BR'S

PLAN & PROFILE
 26-G-3105
 BRIDGE CONTRACT NO. 1576
 July 20, 1937

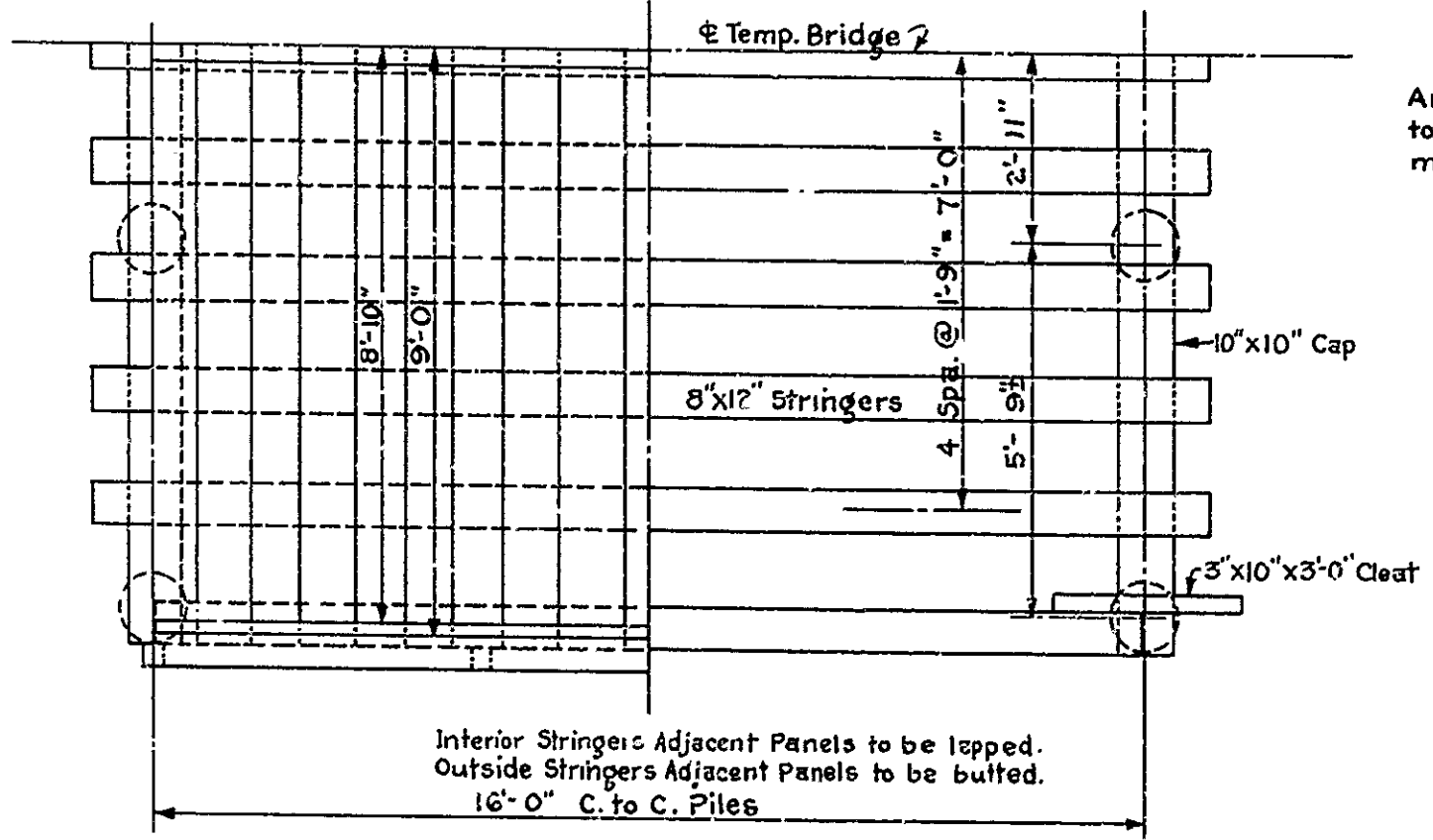
41 45 6 7 8 9 50 1 2 3 4 55 6 7 8

BRIDGES OVER 20' SPAN					
F.L.O. ROAD DIST. NO.	STATE	YEAR	FISCAL YEAR	SHEET NO.	TOTAL SHEETS
7	IND.	76	1938	3	14

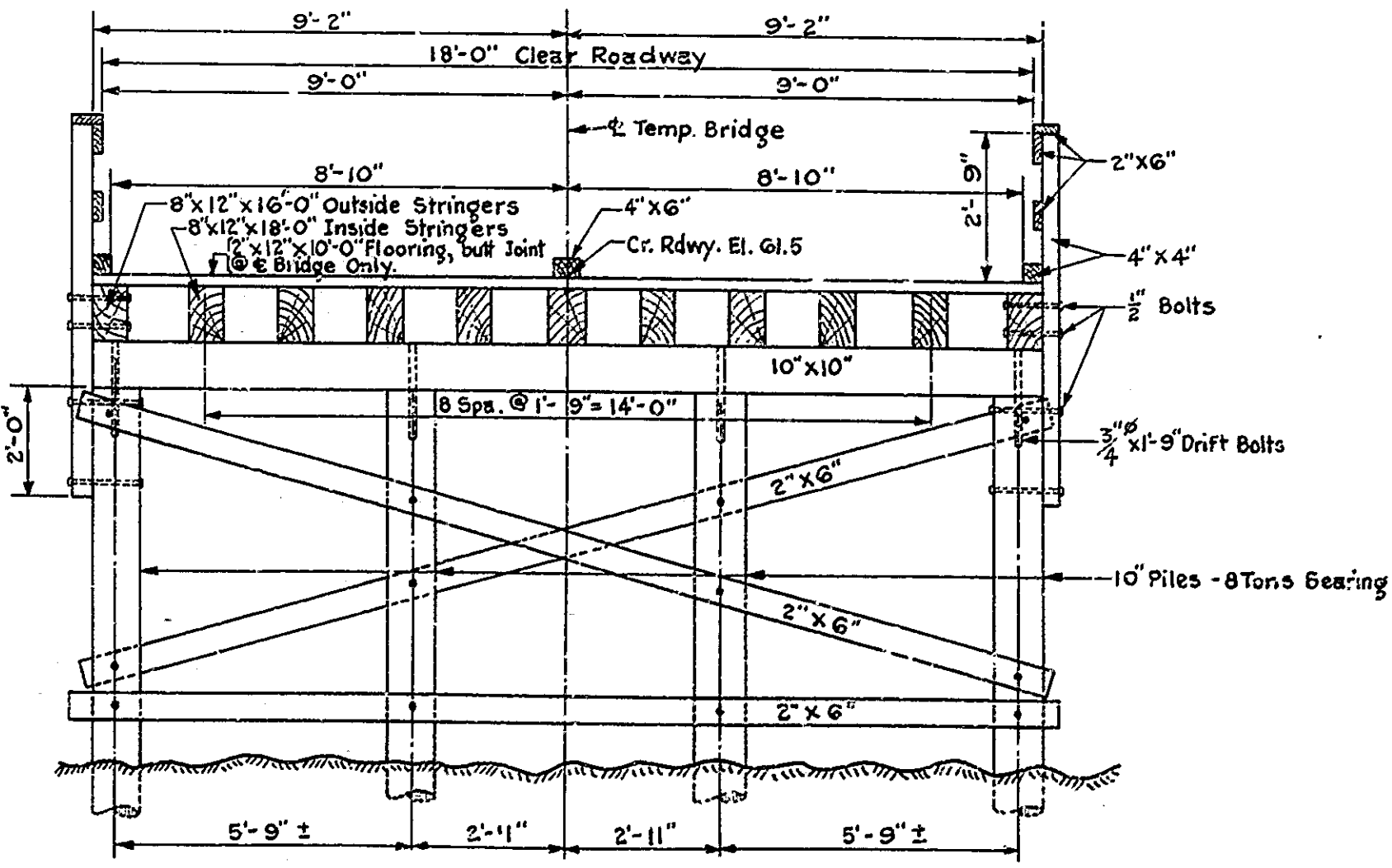
SECTION- 6



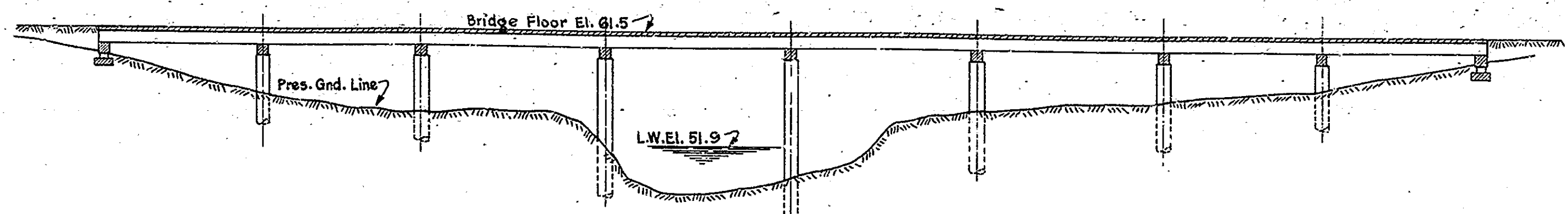
ELEVATION



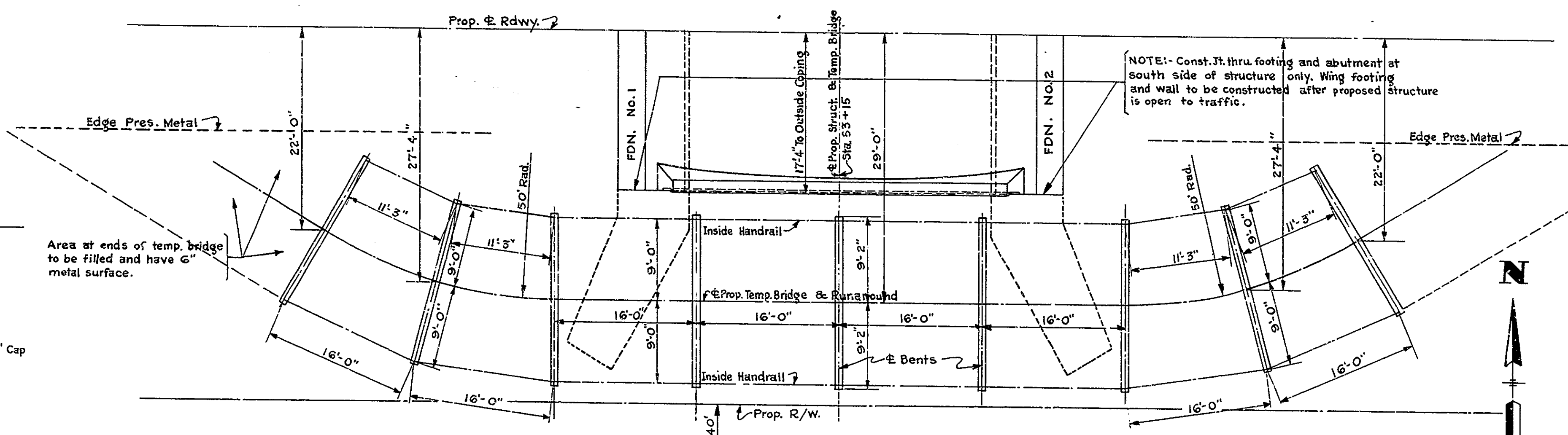
HALF PLAN
LEFT HALF SHOWING FLOORING.
RIGHT HALF SHOWING FLOORING REMOVED.



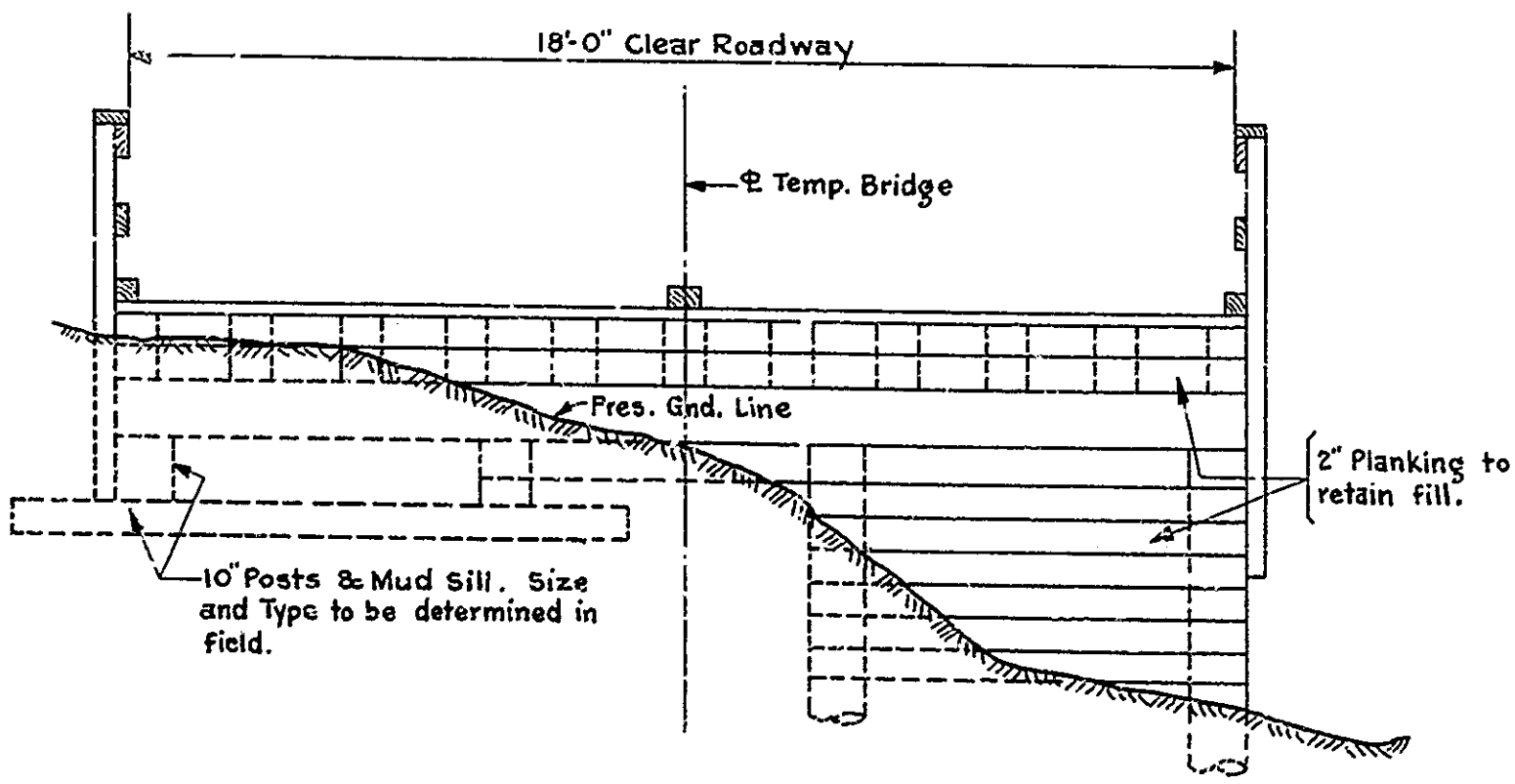
TYPICAL SECTION (INTERIOR)
DETAILS FOR ONE PANEL (TYPICAL)
SCALE: 3/8" = 1'-0"



PROFILE AND SECTION ON PROP. TEMP. BRIDGE



PLAN



TYPICAL END BENT ELEVATION
SCALE: 3/8" = 1'-0"

NOTES:-
Flooring to consist of one layer of 2"x12"x10'-0" planking laid transversely and spiked securely to stringers. Stringers to be toe nailed or blocked securely to caps.
All bracing to be spiked securely to piles. Longitudinal bracing to be placed as directed by the Engineer.
Structure is designed for 15 ton truck, impact not considered.
Alternate scheme may be used subject to approval of the Engineer.

TEMPORARY BRIDGE DETAILS
STATE HIGHWAY COMMISSION OF INDIANA

SCALE: 1/8" = 1'-0" UNLESS NOTED JULY 20, 1937

RECOMMENDED FOR APPROVAL: *[Signature]*

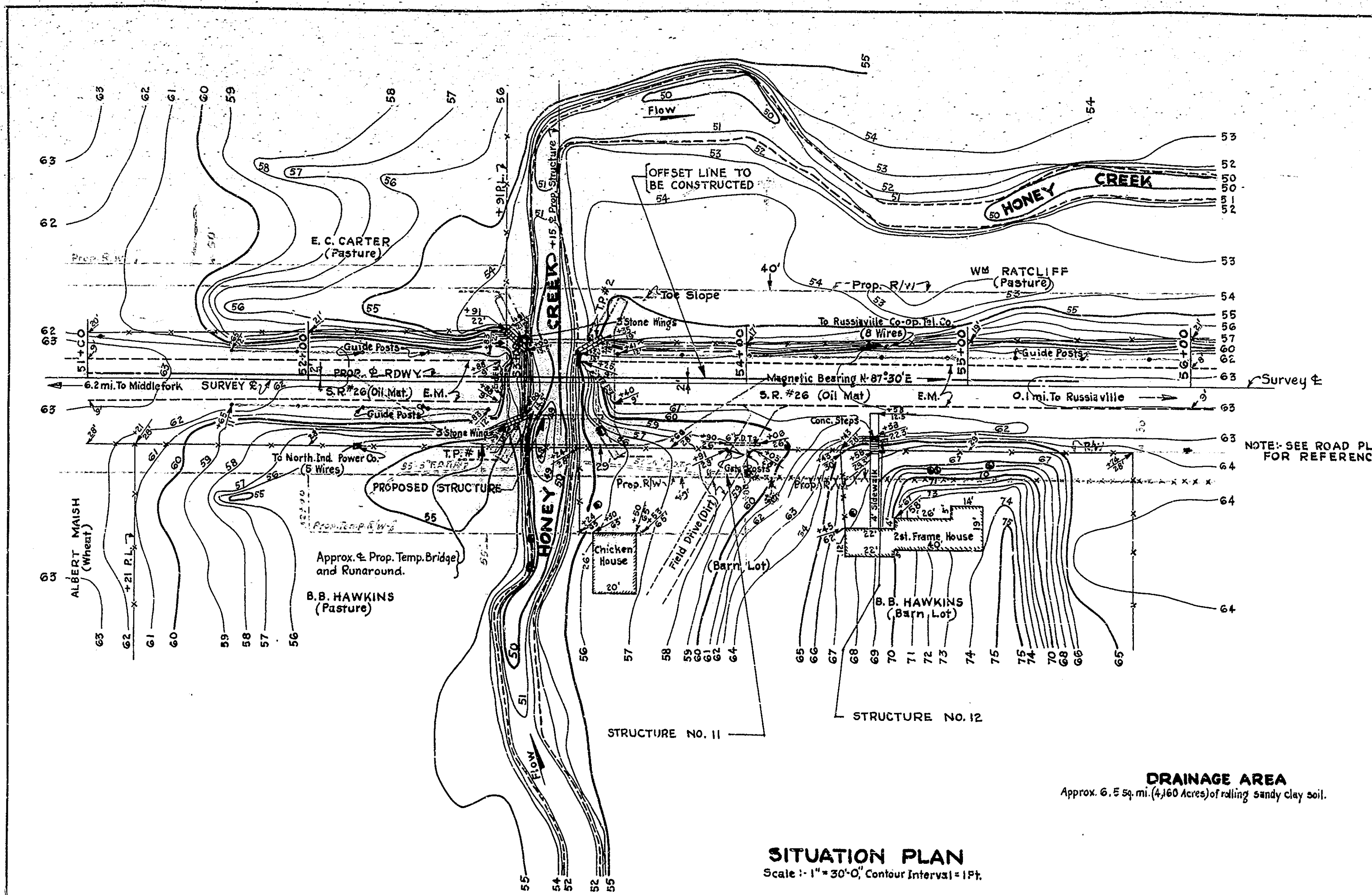
PROJECT- 26 STATION- 53 + 15
SECTION- 6 STRUCTURE NO. 3105

DRAWING- T1 OF 1 BRIDGE CONTRACT NO. 1576

DESIGNED BY: C.R.R. T-19-37
CHECKED BY: W.H.D.T. 9-37
TRACED BY: M.S.L. 1-30-37

BRIDGES OVER 20 SPAN					
FED. ROAD DIST. NO.	STATE	PAID BY	FISCAL YEAR	TOTAL SHEETS	TOTAL SHEETS
7	IND.	26	1938	4	14

SECTION- 6



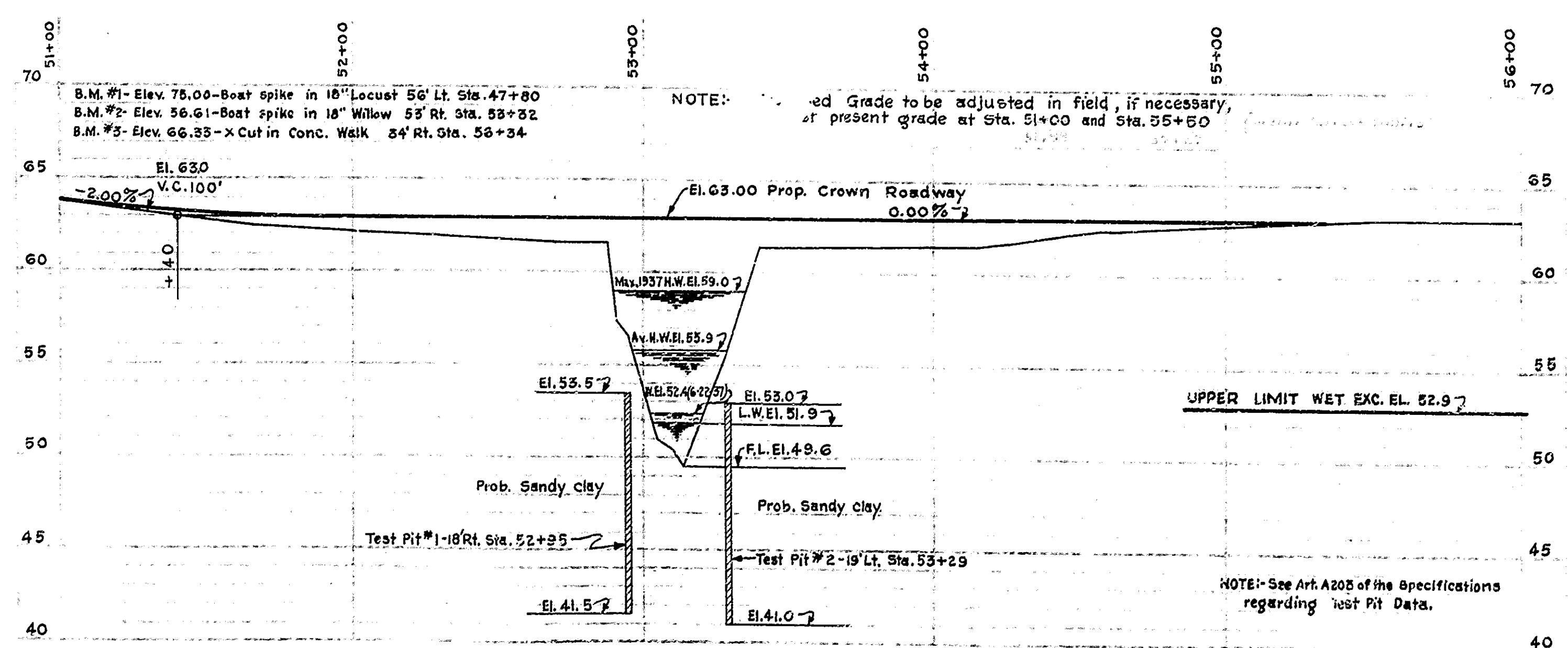
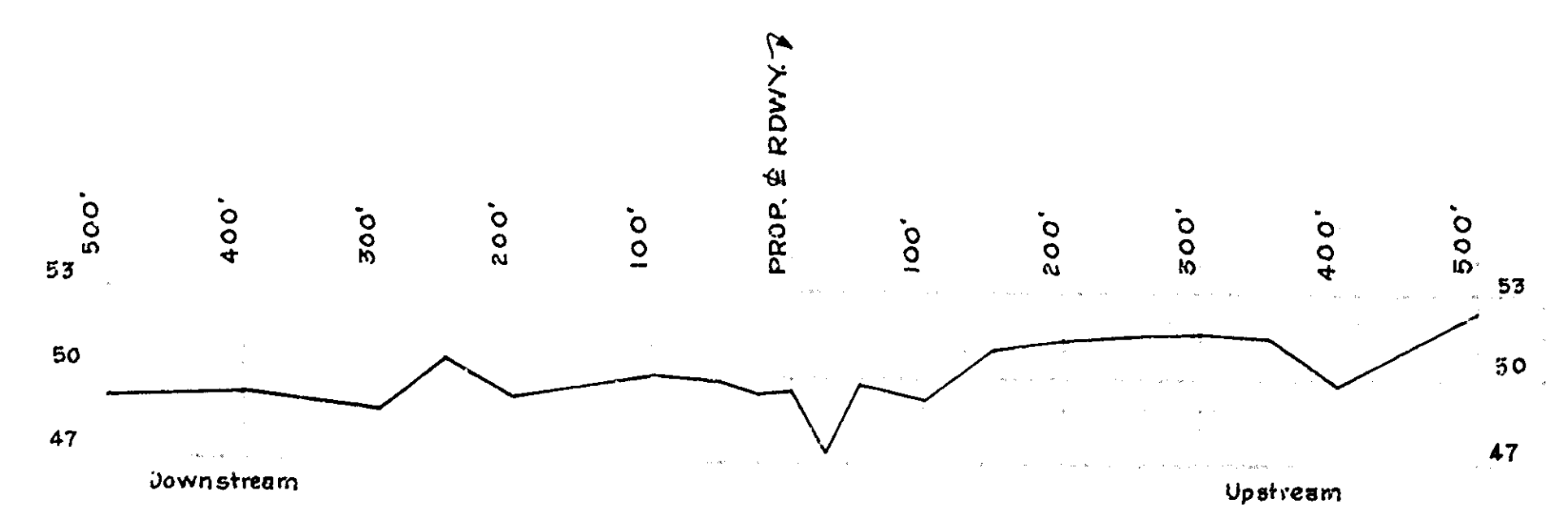
NOTE:- PRESENT SUPERSTRUCTURE AND PORTIONS OF PRESENT SUBSTRUCTURE HAVE BEEN REMOVED FROM BRIDGE SITE.

NOTE:- SEE ROAD PLAN FOR REFERENCES.

NOTE:- PLUSSES AND DISTANCES TO PRESENT FENCES, ETC. ARE FOR SURVEY ☿

PROPOSED R/W MEASURED FROM OFFSET LINE (PROP. ☿ ROWY)

DRAINAGE AREA
Approx. 6.5 sq. mi. (4,160 Acres) of rolling sandy clay soil.



NOTE:- Proposed Grade to be adjusted in field, if necessary, at present grade at Sta. 51+00 and Sta. 55+50

NOTE:- See Art. 205 of the Specifications regarding Test Pit Data.

LAYOUT
REINFORCED CONCRETE BRIDGE
1 SPAN @ 35'-0" 32'-0" ROADWAY
OVER HONEY CREEK ON STATE ROAD 26-G
STATE HIGHWAY COMMISSION OF INDIANA
HOWARD COUNTY

SCALE: AS NOTED
RECOMMENDED FOR APPROVAL: JULY 20, 1937

PROJECT: 26 STATION: 53+15
SECTION: G STRUCTURE NO. 3105
DRAWING: C1 OF 3

DESIGNED BY: W.M.S. 7-9-37
CHECKED BY: W.M.S. 7-9-37
TRACED BY: W.M.S. 7-9-37

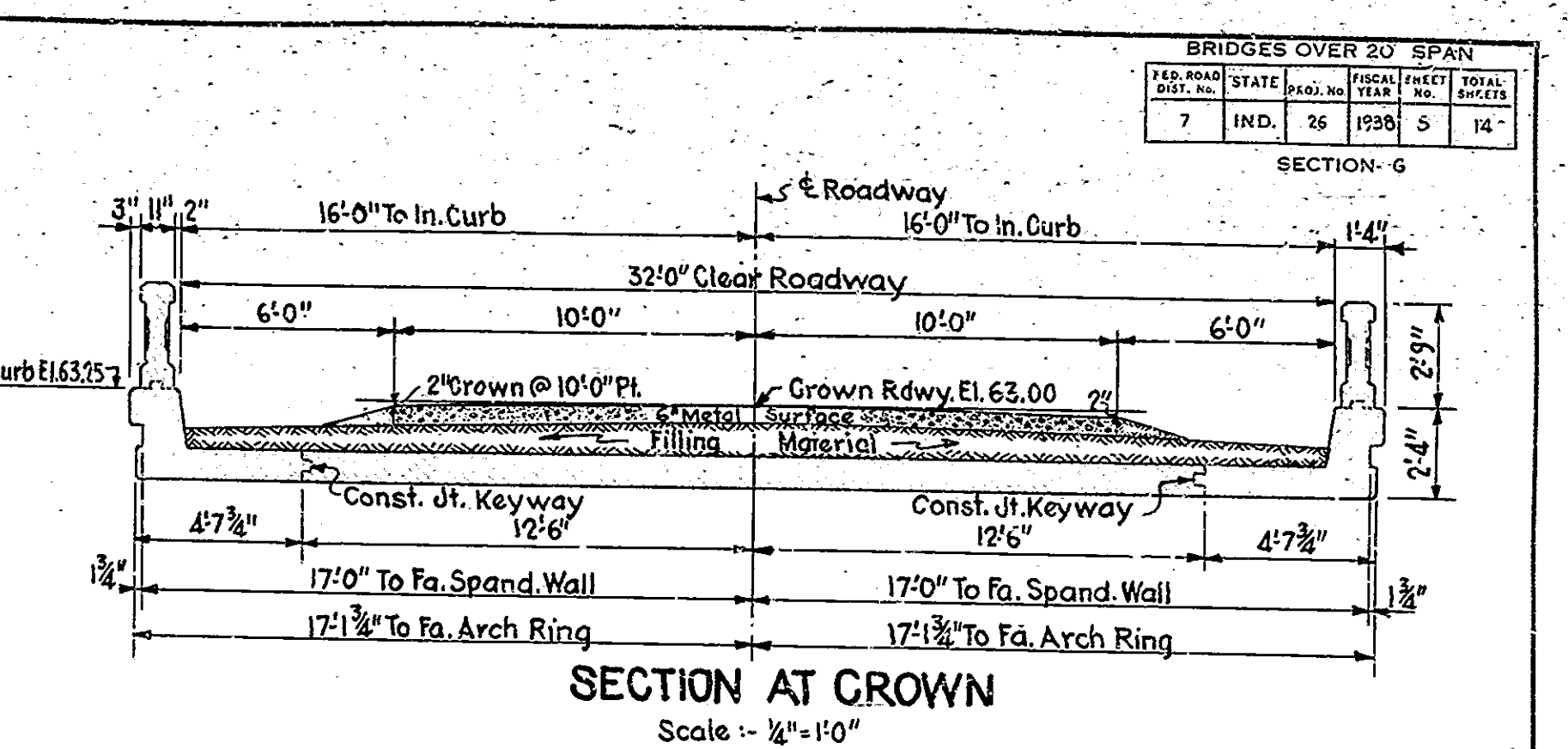
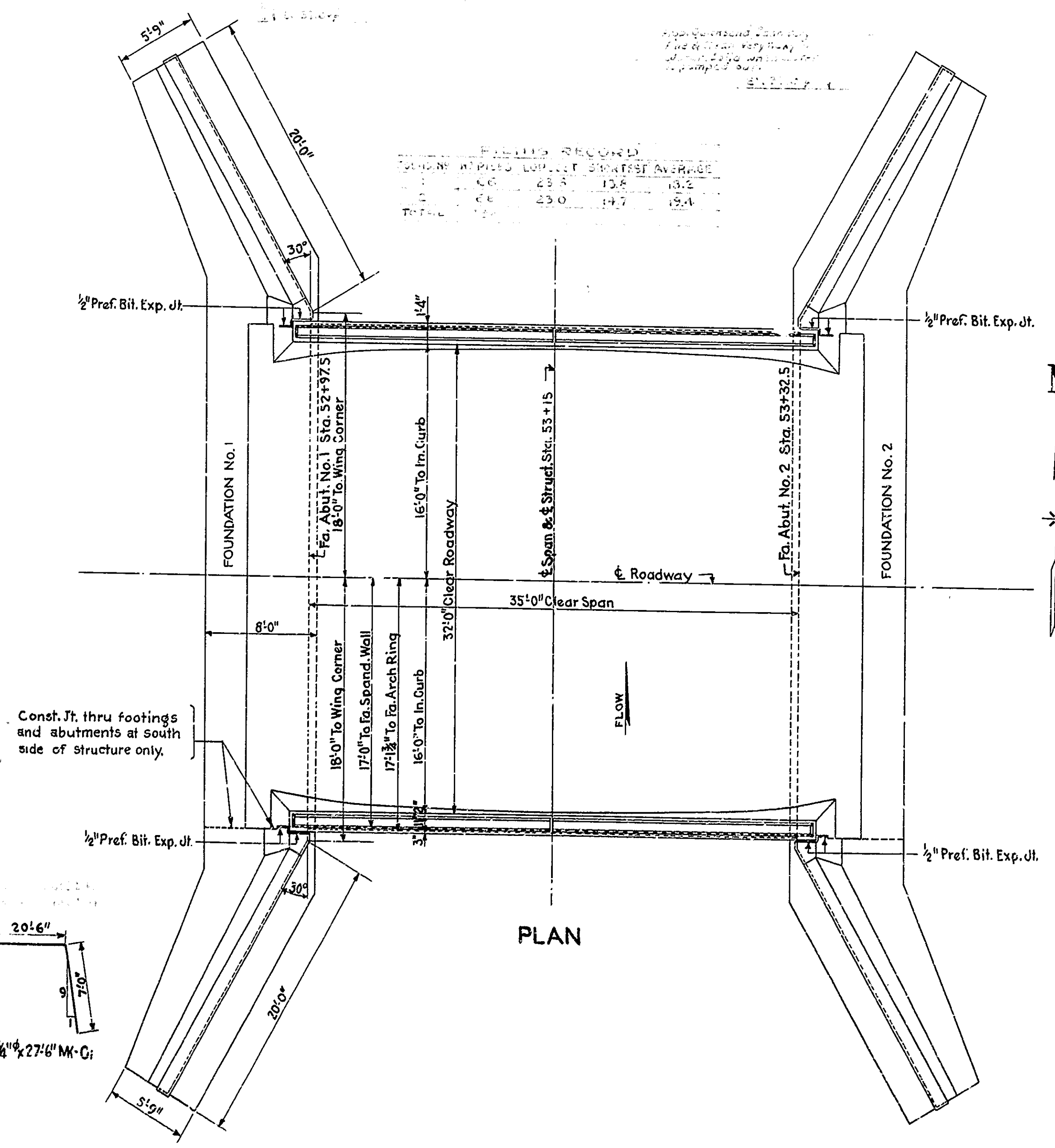
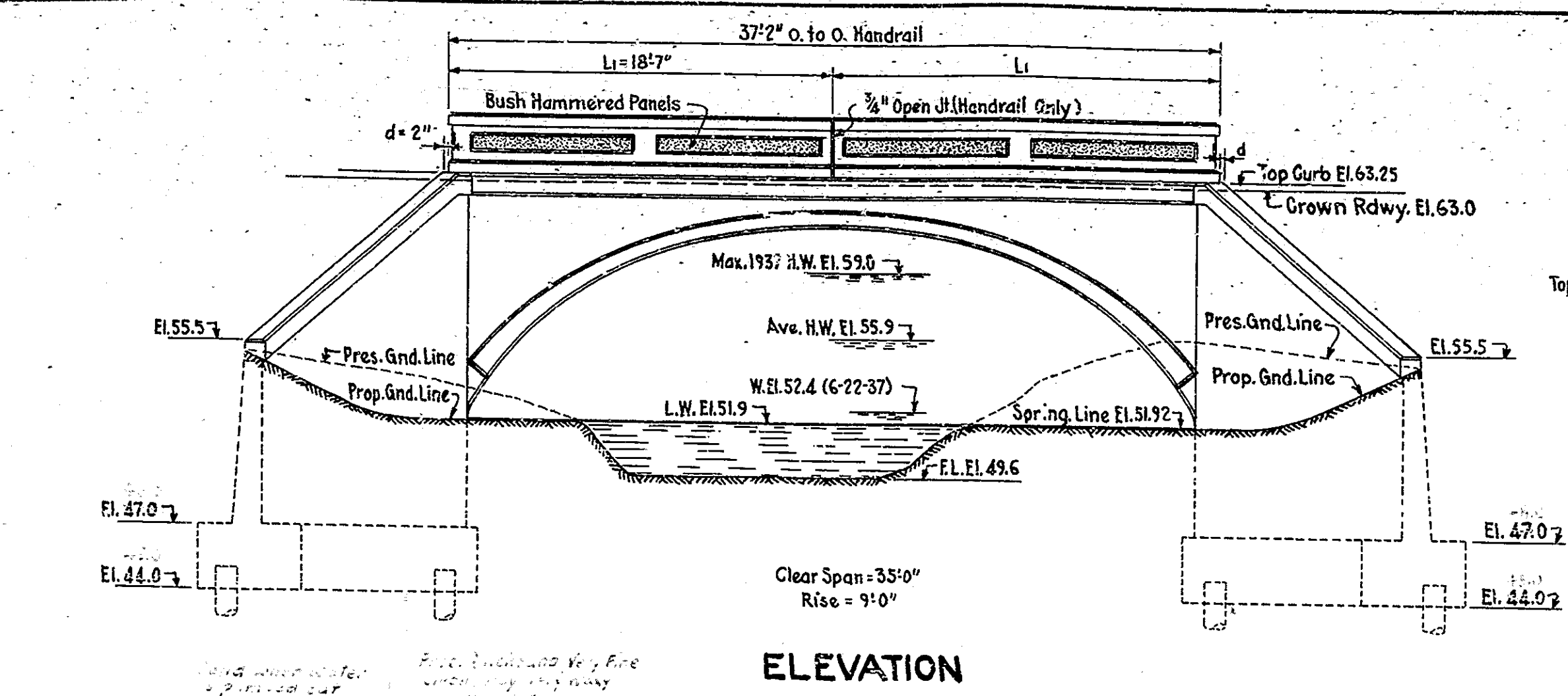
FIELD NOTES: Book BR. #915, pp. 23-57

BRIDGE CONTRACT NO. 1575

BILL OF MATERIALS

REINFORCING STEEL

MARK	NO.	SIZE	LENGTH	LOCATION	TOTAL LENGTH	WEIGHT	TOTAL WEIGHT
ABUTMENT NO. 1 (ABUT. NO. 2 SAME)							
A1	35	3/4"	20'-3"	Ar. Rg. Extr. & Vert. Abut.	708'-3"		
A2	35	1/2"	14'-9"	" " " " " "	516'-3"		
B1	24	1/2"	7'-0"	Transv. Wg. Flgs. (Top)	168'-0"		
B2	12	1/2"	6'-0"	" " " " " "	72'-0"		
R1	4	1/2"	18'-9"	Vert. R.F. Wgs. ()	75'-6"		
R2	2	1/2"	12'-9"	" " " " " "	25'-6"		
R3	4	1/2"	18'-9"	" " " " " "	75'-6"		
R4	4	1/2"	18'-9"	" " " " " "	75'-6"		
R5	8	1/2"	11'-3"	" " " " " "	90'-0"		
R6	8	1/2"	11'-3"	" " " " " "	90'-0"		
R7	32	1/2"	9'-3"	" " " " " "	296'-0"		
R8	6	1/2"	15'-0"	End Sp. Wls.	90'-0"		
F1	47	1/2"	8'-0"	Transv. Fig. (37 Abut. 10 Wgs.) (Both)	378'-0"	3,398#	
F2	10	1/2"	7'-3"	" " " " " "	73'-0"		
F3	10	1/2"	6'-0"	" " " " " "	60'-0"		
F4	8	1/2"	6'-0"	" " " " " "	48'-0"		
F5	18	1/2"	5'-6"	" " " " " "	99'-0"		
F6	36	1/2"	3'-0"	Abut. Flg. ()	108'-0"		
S1	8	1/2"	2'-0"	Stirrups - Ar. Rg.	16'-0"		
S2	10	1/2"	1'-9"	" " " " " "	19'-0"		
T1	8	1/2"	7'-6"	Transv. - " " (Umb. Top)	60'-0"		
T2	5	1/2"	37'-9"	Langt. Ab. Flg. (Both)	139'-5"		
T3	7	1/2"	34'-0"	" " " " " "	238'-0"		
Total Steel - Abut. No. 1					2,267'-0"		
Total Steel - Abut. No. 2					2,267'-0"		
SPAN							
C1	12	3/4"	27'-6"	Horiz. Curb & Vert. Sp. Wls.	330'-0"		
C2	35	1/2"	36'-0"	Langt. Ar. Rg. (Center)	1260'-0"		
C3	35	1/2"	29'-0"	" " " " " "	1020'-0"		
Total Span					2,610'-0"	3,913#	
L1	8	1/2"	10'-0"	Vert. R.F. Sp. Wls.	80'-0"		
L2	4	1/2"	9'-0"	" " " " " "	36'-0"		
L3	4	1/2"	7'-6"	" " " " " "	30'-0"		
L4	4	1/2"	6'-3"	" " " " " "	25'-0"		
L5	4	1/2"	5'-6"	" " " " " "	22'-0"		
L6	4	1/2"	4'-9"	" " " " " "	19'-0"		
L7	12	1/2"	4'-3"	" " " " " "	51'-0"		
S1	26	1/2"	2'-0"	Stirrups - Ar. Rg.	52'-0"		
S2	120	1/2"	1'-9"	" " " " " "	216'-0"		
S3	42	1/2"	1'-6"	" " " " " "	63'-0"		
S4	42	1/2"	1'-3"	" " " " " "	52'-0"		
S5	105	1/2"	1'-2"	" " " " " "	122'-0"		
T1	22	1/2"	34'-9"	Transv. - " " (FF & R.F.)	764'-6"		
T2	8	1/2"	37'-9"	Horiz. Sp. Wls. (FF & R.F.)	303'-0"		
T3	12	1/2"	25'-0"	Transv. Ar. Rg. (Umb. Tops)	300'-0"		
T4	12	1/2"	8'-6"	Sp. Walls (FF & R.F.) - 8 Hor. - 4 Vert.	102'-0"		
T5	4	1/2"	7'-0"	Vert. Sp. Wls. (FF)	28'-0"		
T6	12	1/2"	5'-6"	Sp. Walls (FF & R.F.) - 8 Hor. - 4 Vert.	66'-0"		
T7	44	1/2"	4'-6"	4 Vert. Sp. Wls. (FF) - 40 Vert. H.R. (R.F.)	198'-0"		
T8	12	1/2"	3'-6"	Sp. Walls (FF & R.F.) - 8 Hor. - 4 Vert.	42'-0"		
T9	4	1/2"	2'-9"	Vert. Sp. Wls. (R.F.)	11'-0"		
T10	12	1/2"	2'-3"	" " " " " "	27'-0"		
Total Span					2,556'-6"	2,003#	
C1	40	3/8"	18'-3"	Horiz. H.R. (R.F.)	732'-0"		
C2	40	1/2"	2'-6"	Vert. " " " "	100'-0"		
Total Span					832'-0"	340#	6,256#
Total Steel - Span					903'-0"	340#	6,256#
SPICE BARS							
S1	3	3/4"	10'-6"	Splice with 3/8" out for test	31'-6"	47#	
S2	3	1/2"	8'-0"	" " " " " "	24'-0"	20#	
S3	5	3/8"	7'-0"	" " " " " "	35'-0"	8#	
Total Splice Bars					90'-6"	75#	
GRAND TOTAL STEEL - STRUCTURE						17,941#	
CONCRETE							
Class "E" - Footings	Abut. #1	Span	Abut. #2	Total			
Class "E" - Above Flgs. - Wings & Abut. up to Skew Const. Jt.	61.0		61.0	122.0			
Class "D" - Arch Ring - Center Sect. (25'-0" wide) betw. Skew Const. Jts.	50.4		50.4	100.8			
- Arch Ring - Outer Sections (2 @ 4'-7 1/2" wide) betw. Umb. Top Const. Jts.			11.7	11.7			
- Spandrel Walls			16.3	16.3			
Total Class "D" (Except Handrail)			64.9	64.9			
Class "B" - Handrail (5.6 Cu. Yds.)				5.6			
Total Class "D" & "B"						74.3	74.3 Lin. Ft.
MISCELLANEOUS							
16 oz. Soft Copper Flashing (1 1/2" wide)				35	Lin. Ft.		
4" Drains steel Boiler Tubing (Wt./ft. = 6.286) 6 @ 2'-0" 4 @ 2'-3"				132	Lbs.		
132 Timber Piles (Approx. Lg. = 20'-0")				2640	Lin. Ft.		
Filling Material (Fa. to Fa. Abuts.)				114	Cu. Yds.		



GENERAL NOTES

Depth of footings to be extended if found necessary. See Art. B B 202 of Specifications.

Piles shall have bearing value shown on Detail Drawings. Determine pile lengths by Art. D D 101 of Specifications.

Reinforcing steel covering shall be 3 inches in footings, 2 inches in all other parts unless noted.

All Dimensions on Details and Bending Diagrams for Reinforcing Bars are measured on centerlines of Bars.

Concrete in footings, wingwalls, and abutments up to skewbacks (outer 4'-7 1/2" portions of Abut. up to umbrella tops) to be Class "E".

Concrete in structure not noted above and in headwalls to be Class "D".

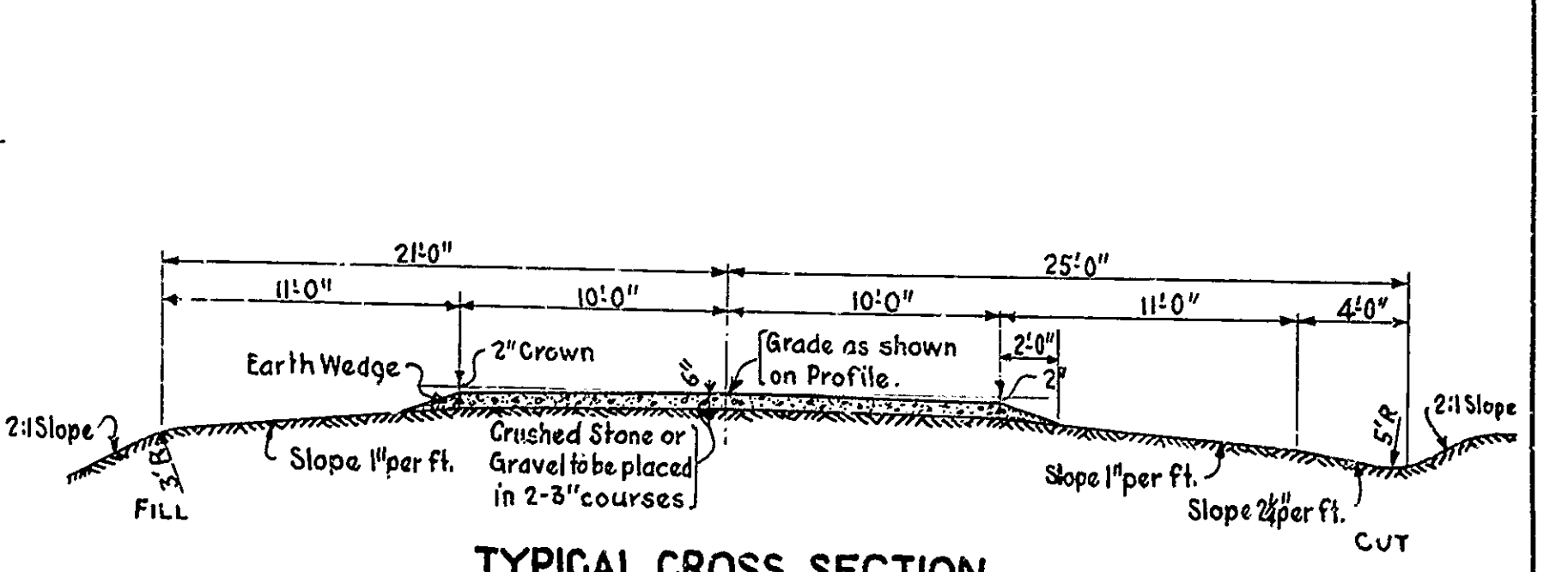
Waterproof abutments, wingwalls, arch ring, and spandrel walls in accordance with Specifications.

Bevel forms 1/4 inch under copings; and chamfer exposed edges 3/4 inch unless noted.

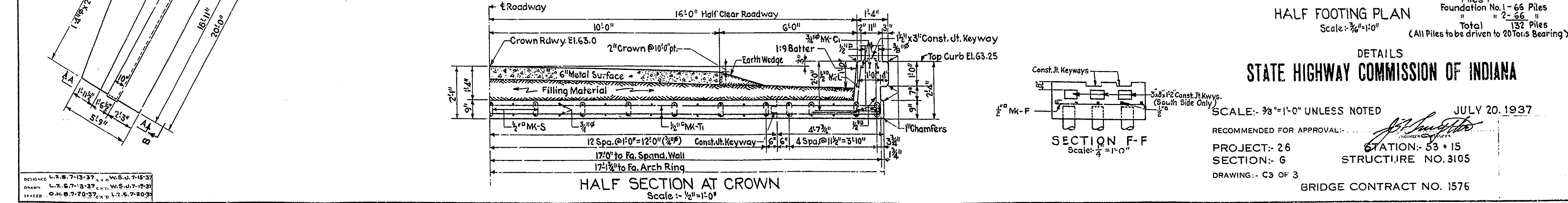
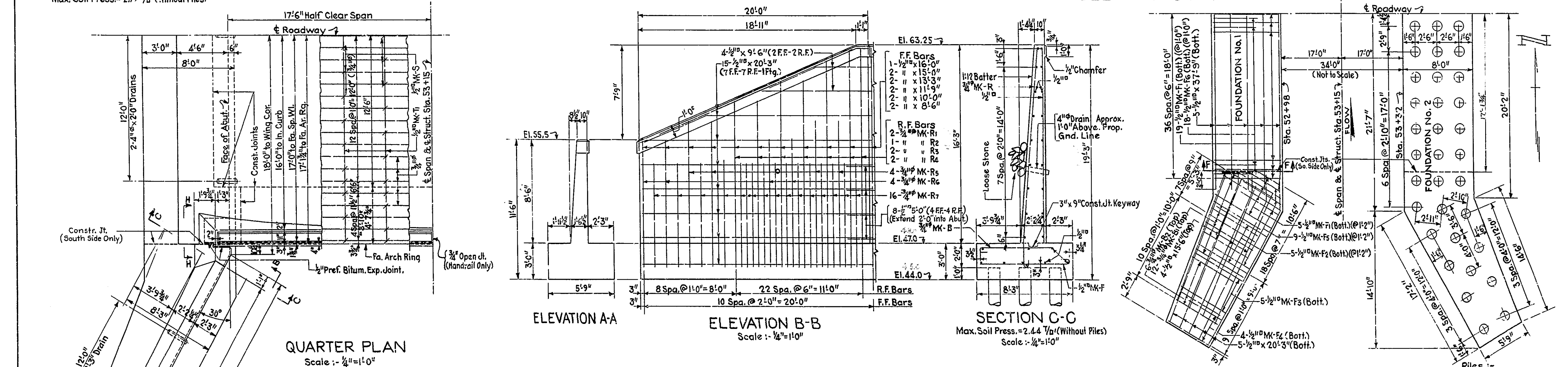
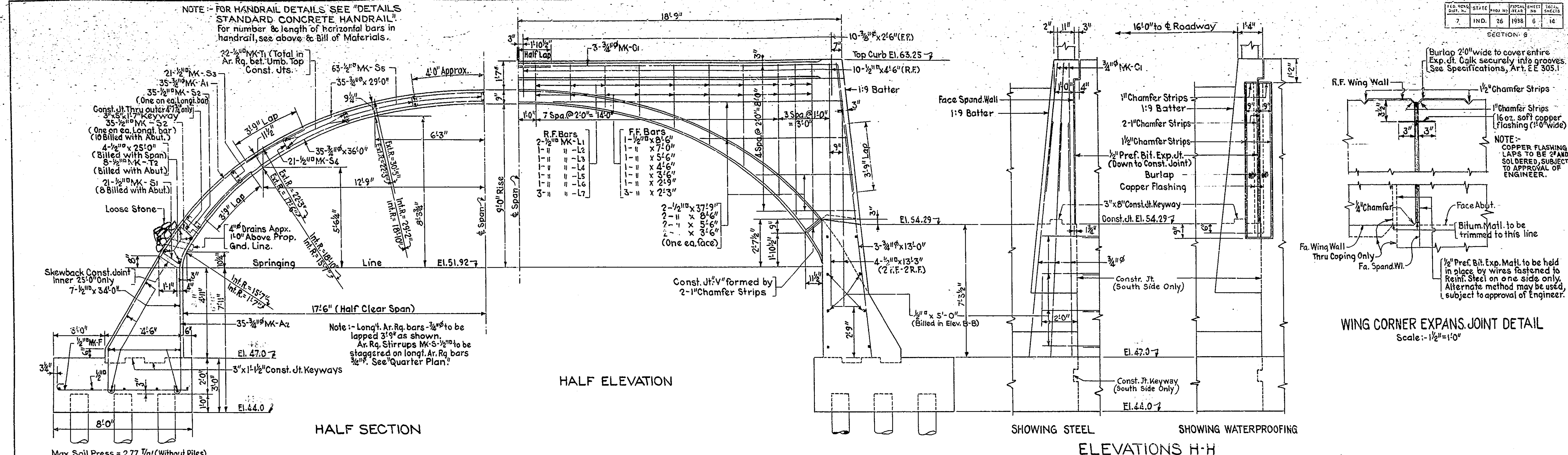
Wings to be rip-rapped.

Outlet Ends of drains thru structure to project 3". Cut or burn off Inlet Ends flush with Concrete.

See Special Provisions for items included in this contract.



GENERAL PLAN, BILL OF MATERIALS, & BENDING DIAGRAMS
REINFORCED CONCRETE BRIDGE
 1 SPAN @ 35'-0" OVER HONEY CREEK
 32'-0" ROADWAY ON STATE ROAD-26-6
STATE HIGHWAY COMMISSION OF INDIANA
 HOWARD COUNTY
 SCALE: 3/16" = 1'-0" UNLESS NOTED JULY 20, 1937
 RECOMMENDED FOR APPROVAL: _____
 PROJECT: 26 STATION: 53 + 15
 SECTION: 6 BRIDGE CONTRACT NO. 1576
 DRAWING: C2 OF 3



DESIGNED: L. S. B. 7-13-37
 DRAWN: L. S. B. 7-13-37
 CHECKED: C. H. B. 7-20-37

