

CONTRACT NO. 8-12105

INDEX					
PROJECT	STRUCTURE	TYPE	SPAN	OVER	STATION
ID-FRI-70-2(50)51	I-70-51-5178A	BRIDGE DECK RECONSTRUCTION & OVERLAY	30'-6" 35'-6" 70'-0"	MILL CREEK	
SHEET NO.	SHEET DESIGNATION	SUBJECT			FINAL APPROVAL
1	ONE SHEET	INDEX AND TITLE SHEET			
2	ONE SHEETS	TRAFFIC MAINTENANCE DETAILS			
3	ONE SHEETS	GENERAL PLAN			
4	ONE SHEETS	NOTES			
5	ONE SHEETS	PER. REE.S. HAS DETAILS & BILL OF MATERIALS			
6	ONE SHEETS	DETAILS AND ESTIMATE OF QUANTITIES			

STATE OF INDIANA
INDIANA STATE HIGHWAY COMMISSION

BRIDGE PLANS FOR SPANS OVER 20 FEET ON INTERSTATE ROAD NO.70 PROJECT NO. ID-FRI-70-2(50)51

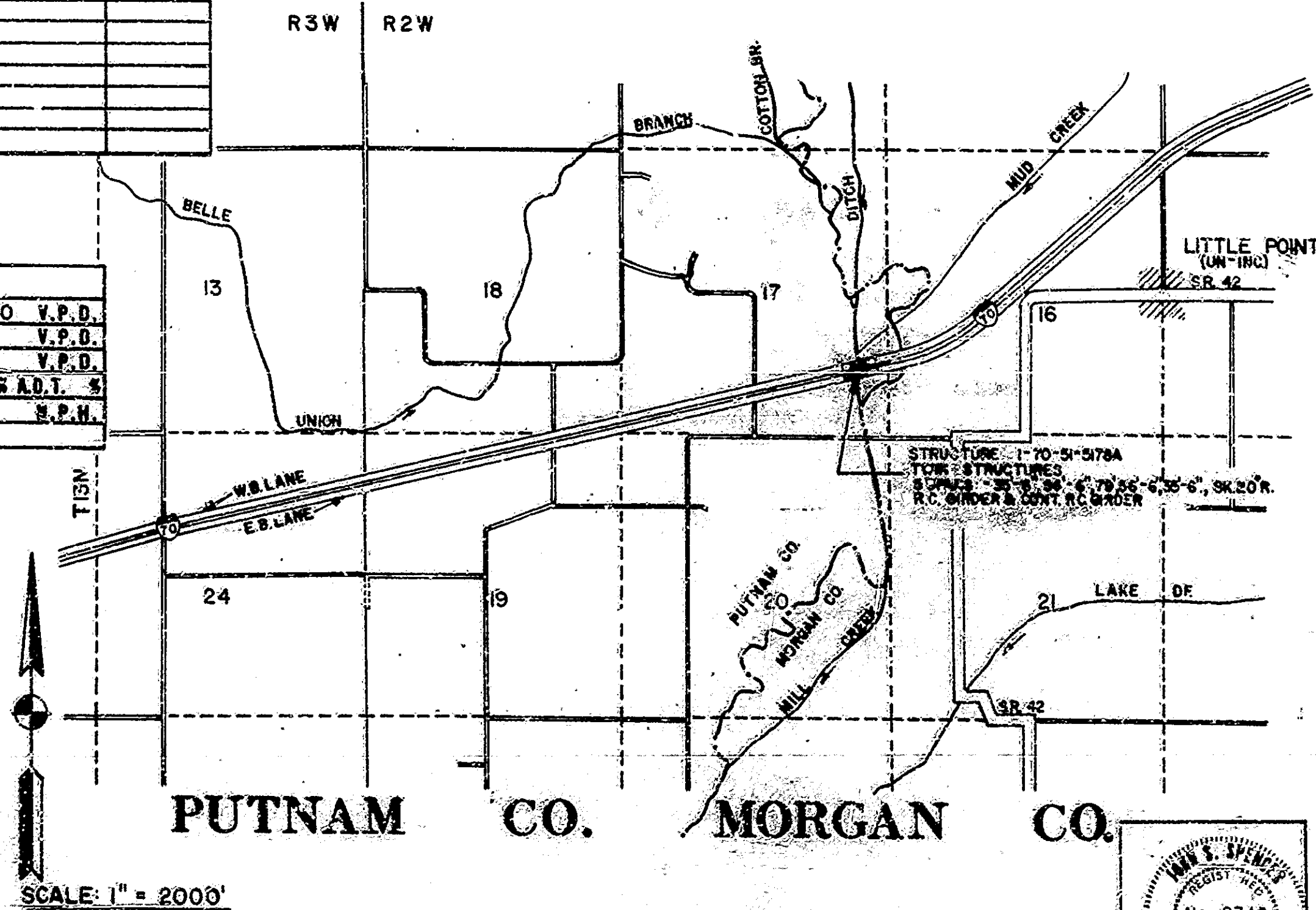
BRIDGE DECK OVERLAY FOR STRUCTURE I-70-51-5178A LOCATED ON INTERSTATE 70 OVER MILL CREEK IN SECTION 17, T 13 N, R 2 W, PUTNAM COUNTY, INDIANA.

SECTION	STATE	PROJECT NO.	YEAR	SHEET NO.	TOTAL SHEETS
6	IND.	80-FRI-70-2 (50)51	1978	1	18

INDEX CONTINUED				
SHEET NO.	SHEET DESIGNATION	SUBJECT	DATE	BY
7	BRIDGE STD. 01	ADJUSTED BEARING DETAILS	6-15-77	6-1-77
7	BRIDGE STD. 02	ADJUSTED BEARING DETAILS		
7	BRIDGE STD. 03	ADJUSTED BEARING DETAILS		
7	BRIDGE STD. 04	ADJUSTED BEARING DETAILS		
7	BRIDGE STD. 05	ADJUSTED BEARING DETAILS		
7	BRIDGE STD. 06	ADJUSTED BEARING DETAILS		
7	BRIDGE STD. 07	ADJUSTED BEARING DETAILS		
7	BRIDGE STD. 08	ADJUSTED BEARING DETAILS		
7	BRIDGE STD. 09	ADJUSTED BEARING DETAILS		
7	BRIDGE STD. 10	ADJUSTED BEARING DETAILS		
7	BRIDGE STD. 11	ADJUSTED BEARING DETAILS		
7	BRIDGE STD. 12	ADJUSTED BEARING DETAILS		
7	BRIDGE STD. 13	ADJUSTED BEARING DETAILS		
7	BRIDGE STD. 14	ADJUSTED BEARING DETAILS		
7	BRIDGE STD. 15	ADJUSTED BEARING DETAILS		
7	BRIDGE STD. 16	ADJUSTED BEARING DETAILS		
7	BRIDGE STD. 17	ADJUSTED BEARING DETAILS		
7	BRIDGE STD. 18	ADJUSTED BEARING DETAILS		
7	BRIDGE STD. 19	ADJUSTED BEARING DETAILS		
7	BRIDGE STD. 20	ADJUSTED BEARING DETAILS		
7	BRIDGE STD. 21	ADJUSTED BEARING DETAILS		
7	BRIDGE STD. 22	ADJUSTED BEARING DETAILS		
7	BRIDGE STD. 23	ADJUSTED BEARING DETAILS		
7	BRIDGE STD. 24	ADJUSTED BEARING DETAILS		
7	BRIDGE STD. 25	ADJUSTED BEARING DETAILS		
7	BRIDGE STD. 26	ADJUSTED BEARING DETAILS		
7	BRIDGE STD. 27	ADJUSTED BEARING DETAILS		
7	BRIDGE STD. 28	ADJUSTED BEARING DETAILS		
7	BRIDGE STD. 29	ADJUSTED BEARING DETAILS		
7	BRIDGE STD. 30	ADJUSTED BEARING DETAILS		
7	BRIDGE STD. 31	ADJUSTED BEARING DETAILS		
7	BRIDGE STD. 32	ADJUSTED BEARING DETAILS		
7	BRIDGE STD. 33	ADJUSTED BEARING DETAILS		
7	BRIDGE STD. 34	ADJUSTED BEARING DETAILS		
7	BRIDGE STD. 35	ADJUSTED BEARING DETAILS		
7	BRIDGE STD. 36	ADJUSTED BEARING DETAILS		
7	BRIDGE STD. 37	ADJUSTED BEARING DETAILS		
7	BRIDGE STD. 38	ADJUSTED BEARING DETAILS		
7	BRIDGE STD. 39	ADJUSTED BEARING DETAILS		
7	BRIDGE STD. 40	ADJUSTED BEARING DETAILS		
7	BRIDGE STD. 41	ADJUSTED BEARING DETAILS		
7	BRIDGE STD. 42	ADJUSTED BEARING DETAILS		
7	BRIDGE STD. 43	ADJUSTED BEARING DETAILS		
7	BRIDGE STD. 44	ADJUSTED BEARING DETAILS		
7	BRIDGE STD. 45	ADJUSTED BEARING DETAILS		
7	BRIDGE STD. 46	ADJUSTED BEARING DETAILS		
7	BRIDGE STD. 47	ADJUSTED BEARING DETAILS		
7	BRIDGE STD. 48	ADJUSTED BEARING DETAILS		
7	BRIDGE STD. 49	ADJUSTED BEARING DETAILS		
7	BRIDGE STD. 50	ADJUSTED BEARING DETAILS		
7	BRIDGE STD. 51	ADJUSTED BEARING DETAILS		
7	BRIDGE STD. 52	ADJUSTED BEARING DETAILS		
7	BRIDGE STD. 53	ADJUSTED BEARING DETAILS		
7	BRIDGE STD. 54	ADJUSTED BEARING DETAILS		
7	BRIDGE STD. 55	ADJUSTED BEARING DETAILS		
7	BRIDGE STD. 56	ADJUSTED BEARING DETAILS		
7	BRIDGE STD. 57	ADJUSTED BEARING DETAILS		
7	BRIDGE STD. 58	ADJUSTED BEARING DETAILS		
7	BRIDGE STD. 59	ADJUSTED BEARING DETAILS		
7	BRIDGE STD. 60	ADJUSTED BEARING DETAILS		
7	BRIDGE STD. 61	ADJUSTED BEARING DETAILS		
7	BRIDGE STD. 62	ADJUSTED BEARING DETAILS		
7	BRIDGE STD. 63	ADJUSTED BEARING DETAILS		
7	BRIDGE STD. 64	ADJUSTED BEARING DETAILS		
7	BRIDGE STD. 65	ADJUSTED BEARING DETAILS		
7	BRIDGE STD. 66	ADJUSTED BEARING DETAILS		
7	BRIDGE STD. 67	ADJUSTED BEARING DETAILS		
7	BRIDGE STD. 68	ADJUSTED BEARING DETAILS		
7	BRIDGE STD. 69	ADJUSTED BEARING DETAILS		
7	BRIDGE STD. 70	ADJUSTED BEARING DETAILS		
7	BRIDGE STD. 71	ADJUSTED BEARING DETAILS		
7	BRIDGE STD. 72	ADJUSTED BEARING DETAILS		
7	BRIDGE STD. 73	ADJUSTED BEARING DETAILS		
7	BRIDGE STD. 74	ADJUSTED BEARING DETAILS		
7	BRIDGE STD. 75	ADJUSTED BEARING DETAILS		
7	BRIDGE STD. 76	ADJUSTED BEARING DETAILS		
7	BRIDGE STD. 77	ADJUSTED BEARING DETAILS		
7	BRIDGE STD. 78	ADJUSTED BEARING DETAILS		
7	BRIDGE STD. 79	ADJUSTED BEARING DETAILS		
7	BRIDGE STD. 80	ADJUSTED BEARING DETAILS		
7	BRIDGE STD. 81	ADJUSTED BEARING DETAILS		
7	BRIDGE STD. 82	ADJUSTED BEARING DETAILS		
7	BRIDGE STD. 83	ADJUSTED BEARING DETAILS		
7	BRIDGE STD. 84	ADJUSTED BEARING DETAILS		
7	BRIDGE STD. 85	ADJUSTED BEARING DETAILS		
7	BRIDGE STD. 86	ADJUSTED BEARING DETAILS		
7	BRIDGE STD. 87	ADJUSTED BEARING DETAILS		
7	BRIDGE STD. 88	ADJUSTED BEARING DETAILS		
7	BRIDGE STD. 89	ADJUSTED BEARING DETAILS		
7	BRIDGE STD. 90	ADJUSTED BEARING DETAILS		
7	BRIDGE STD. 91	ADJUSTED BEARING DETAILS		
7	BRIDGE STD. 92	ADJUSTED BEARING DETAILS		
7	BRIDGE STD. 93	ADJUSTED BEARING DETAILS		
7	BRIDGE STD. 94	ADJUSTED BEARING DETAILS		
7	BRIDGE STD. 95	ADJUSTED BEARING DETAILS		
7	BRIDGE STD. 96	ADJUSTED BEARING DETAILS		
7	BRIDGE STD. 97	ADJUSTED BEARING DETAILS		
7	BRIDGE STD. 98	ADJUSTED BEARING DETAILS		
7	BRIDGE STD. 99	ADJUSTED BEARING DETAILS		
7	BRIDGE STD. 100	ADJUSTED BEARING DETAILS		
7	BRIDGE STD. 101	ADJUSTED BEARING DETAILS		
7	BRIDGE STD. 102	ADJUSTED BEARING DETAILS		
7	BRIDGE STD. 103	ADJUSTED BEARING DETAILS		
7	BRIDGE STD. 104	ADJUSTED BEARING DETAILS		
7	BRIDGE STD. 105	ADJUSTED BEARING DETAILS		
7	BRIDGE STD. 106	ADJUSTED BEARING DETAILS		
7	BRIDGE STD. 107	ADJUSTED BEARING DETAILS		
7	BRIDGE STD. 108	ADJUSTED BEARING DETAILS		
7	BRIDGE STD. 109	ADJUSTED BEARING DETAILS		
7	BRIDGE STD. 110	ADJUSTED BEARING DETAILS		
7	BRIDGE STD. 111	ADJUSTED BEARING DETAILS		
7	BRIDGE STD. 112	ADJUSTED BEARING DETAILS		
7	BRIDGE STD. 113	ADJUSTED BEARING DETAILS		
7	BRIDGE STD. 114	ADJUSTED BEARING DETAILS		
7	BRIDGE STD. 115	ADJUSTED BEARING DETAILS		
7	BRIDGE STD. 116	ADJUSTED BEARING DETAILS		
7	BRIDGE STD. 117	ADJUSTED BEARING DETAILS		
7	BRIDGE STD. 118	ADJUSTED BEARING DETAILS		
7	BRIDGE STD. 119	ADJUSTED BEARING DETAILS		
7	BRIDGE STD. 120	ADJUSTED BEARING DETAILS		
7	BRIDGE STD. 121	ADJUSTED BEARING DETAILS		
7	BRIDGE STD. 122	ADJUSTED BEARING DETAILS		
7	BRIDGE STD. 123	ADJUSTED BEARING DETAILS		
7	BRIDGE STD. 124	ADJUSTED BEARING DETAILS		
7	BRIDGE STD. 125	ADJUSTED BEARING DETAILS		
7	BRIDGE STD. 126	ADJUSTED BEARING DETAILS		
7	BRIDGE STD. 127	ADJUSTED BEARING DETAILS		
7	BRIDGE STD. 128	ADJUSTED BEARING DETAILS		
7	BRIDGE STD. 129	ADJUSTED BEARING DETAILS		
7	BRIDGE STD. 130	ADJUSTED BEARING DETAILS		
7	BRIDGE STD. 131	ADJUSTED BEARING DETAILS		
7	BRIDGE STD. 132	ADJUSTED BEARING DETAILS		
7	BRIDGE STD. 133	ADJUSTED BEARING DETAILS		
7	BRIDGE STD. 134	ADJUSTED BEARING DETAILS		
7	BRIDGE STD. 135	ADJUSTED BEARING DETAILS		
7	BRIDGE STD. 136	ADJUSTED BEARING DETAILS		
7	BRIDGE STD. 137	ADJUSTED BEARING DETAILS		
7	BRIDGE STD. 138	ADJUSTED BEARING DETAILS		
7	BRIDGE STD. 139	ADJUSTED BEARING DETAILS		
7	BRIDGE STD. 140	ADJUSTED BEARING DETAILS		
7	BRIDGE STD. 141	ADJUSTED BEARING DETAILS		
7	BRIDGE STD. 142	ADJUSTED BEARING DETAILS		
7	BRIDGE STD. 143	ADJUSTED BEARING DETAILS		
7	BRIDGE STD. 144	ADJUSTED BEARING DETAILS		
7	BRIDGE STD. 145	ADJUSTED BEARING DETAILS		
7	BRIDGE STD. 146	ADJUSTED BEARING DETAILS		
7	BRIDGE STD. 147	ADJUSTED BEARING DETAILS		
7	BRIDGE STD. 148	ADJUSTED BEARING DETAILS		
7	BRIDGE STD. 149	ADJUSTED BEARING DETAILS		
7	BRIDGE STD. 150	ADJUSTED BEARING DETAILS		
7	BRIDGE STD. 151	ADJUSTED BEARING DETAILS		
7	BRIDGE STD. 152	ADJUSTED BEARING DETAILS		
7	BRIDGE STD. 153	ADJUSTED BEARING DETAILS		
7	BRIDGE STD. 154	ADJUSTED BEARING DETAILS		
7	BRIDGE STD. 155	ADJUSTED BEARING DETAILS		
7	BRIDGE STD. 156	ADJUSTED BEARING DETAILS		
7	BRIDGE STD. 157	ADJUSTED BEARING DETAILS		
7	BRIDGE STD. 158	ADJUSTED BEARING DETAILS		
7	BRIDGE STD. 159	ADJUSTED BEARING DETAILS		
7	BRIDGE STD. 160	ADJUSTED BEARING DETAILS		
7	BRIDGE STD. 161	ADJUSTED BEARING DETAILS		
7	BRIDGE STD. 162	ADJUSTED BEARING DETAILS		
7	BRIDGE STD. 163	ADJUSTED BEARING DETAILS		
7	BRIDGE STD. 164	ADJUSTED BEARING DETAILS		
7	BRIDGE STD. 165	ADJUSTED BEARING DETAILS		
7	BRIDGE STD. 166	ADJUSTED BEARING DETAILS		
7	BRIDGE STD. 167	ADJUSTED BEARING DETAILS		
7	BRIDGE STD. 168	ADJUSTED BEARING DETAILS		
7	BRIDGE STD. 169	ADJUSTED BEARING DETAILS		
7	BRIDGE STD. 170	ADJUSTED BEARING DETAILS		
7	BRIDGE STD. 171	ADJUSTED BEARING DETAILS		
7	BRIDGE STD. 172	ADJUSTED BEARING DETAILS		
7	BRIDGE STD. 173	ADJUSTED BEARING DETAILS		
7	BRIDGE STD. 174	ADJUSTED BEARING DETAILS		
7	BRIDGE STD. 175	ADJUSTED BEARING DETAILS		
7	BRIDGE STD. 176	ADJUSTED BEARING DETAILS		
7	BRIDGE STD. 177	ADJUSTED BEARING DETAILS		
7	BRIDGE STD. 178	ADJUSTED BEARING DETAILS		
7	BRIDGE STD. 179	ADJUSTED BEARING DETAILS		
7	BRIDGE STD. 180	ADJUSTED BEARING DETAILS		
7	BRIDGE STD. 181	ADJUSTED BEARING DETAILS		
7	BRIDGE STD. 182	ADJUSTED BEARING DETAILS		
7	BRIDGE STD. 183	ADJUSTED BEARING DETAILS		
7	BRIDGE STD. 184	ADJUSTED BEARING DETAILS		
7	BRIDGE STD. 185	ADJUSTED BEARING DETAILS		
7	BRIDGE STD. 186	ADJUSTED BEARING DETAILS		
7	BRIDGE STD. 187	ADJUSTED BEARING DETAILS		
7	BRIDGE STD. 188	ADJUSTED BEARING DETAILS		
7	BRIDGE STD. 189	ADJUSTED BEARING DETAILS		
7	BRIDGE STD. 190	ADJUSTED BEARING DETAILS		
7	BRIDGE STD. 191	ADJUSTED BEARING DETAILS		
7	BRIDGE STD. 192	ADJUSTED BEARING DETAILS		
7	BRIDGE STD. 193	ADJUSTED BEARING DETAILS		
7	BRIDGE STD. 194	ADJUSTED BEARING DETAILS		
7	BRIDGE STD. 195	ADJUSTED BEARING DETAILS		
7	BRIDGE STD. 196	ADJUSTED BEARING DETAILS		
7	BRIDGE STD. 197	ADJUSTED BEARING DETAILS		
7	BRIDGE STD. 198	ADJUSTED BEARING DETAILS		
7	BRIDGE STD. 199	ADJUSTED BEARING DETAILS		
7	BRIDGE STD. 200	ADJUSTED BEARING DETAILS		

TRAFFIC DATA	
A.D.T. (1978)	18,600 V.P.D.
A.D.T. (19 PROJECTED)	V.P.D.
D.H.V. (19 PROJECTED)	V.P.D.
TRUCKS	D.H.V. S.A.D.T. %
DESIGN SPEED	S.P.H.
ACCESS CONTROL	

NOTE-
WHENEVER I-FI-70-2(50)51 APPEARS IN THESE PLANS OR CONTRACT DOCUMENTS IT SHALL BE INTERPRETED AS ID-FRI-70-2(50)51.



PLANS PREPARED BY
AMERICAN CONSULTING ENGINEERS, INC.

CERTIFIED BY: *John J. Spencer* DATE: 2-22-79

APPROVED: 4-30-79
J.W. Walters

RECOMMENDED FOR APPROVAL: 4-23-79
J.W. Walters

FEDERAL HIGHWAY ADMINISTRATION
DEPARTMENT OF TRANSPORTATION

APPROVED: _____
DIVISION ADMINISTRATOR DATE

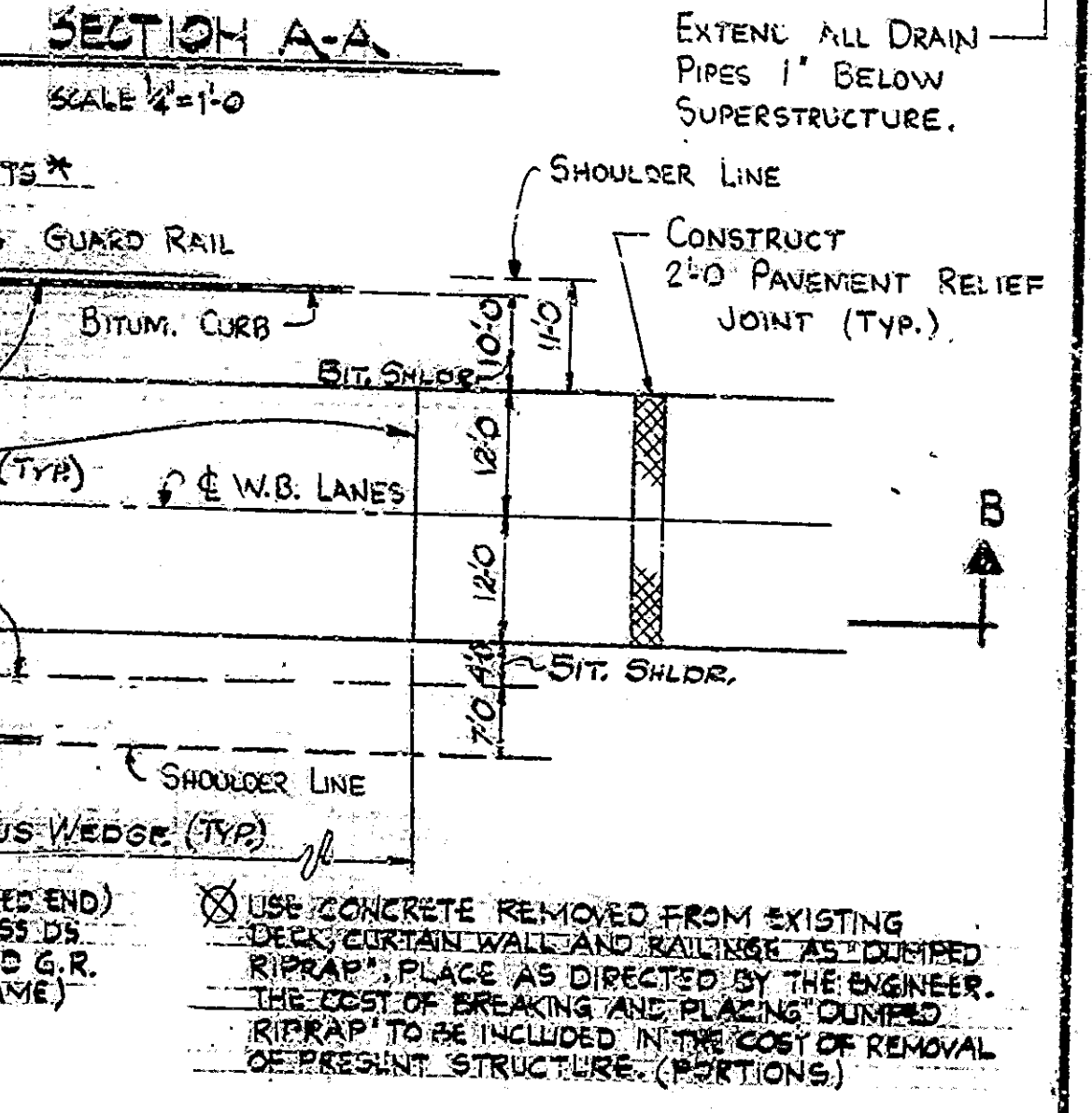
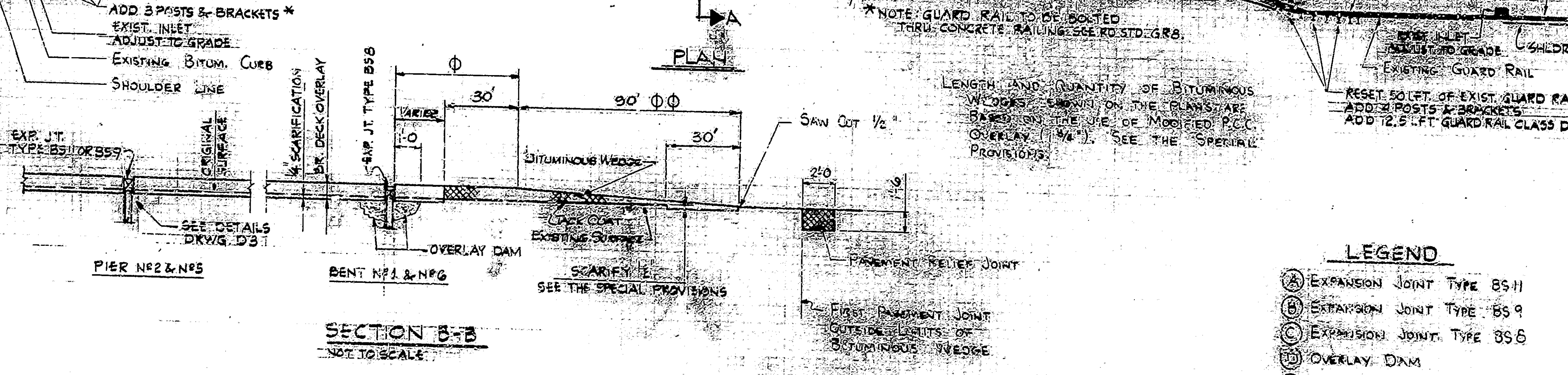
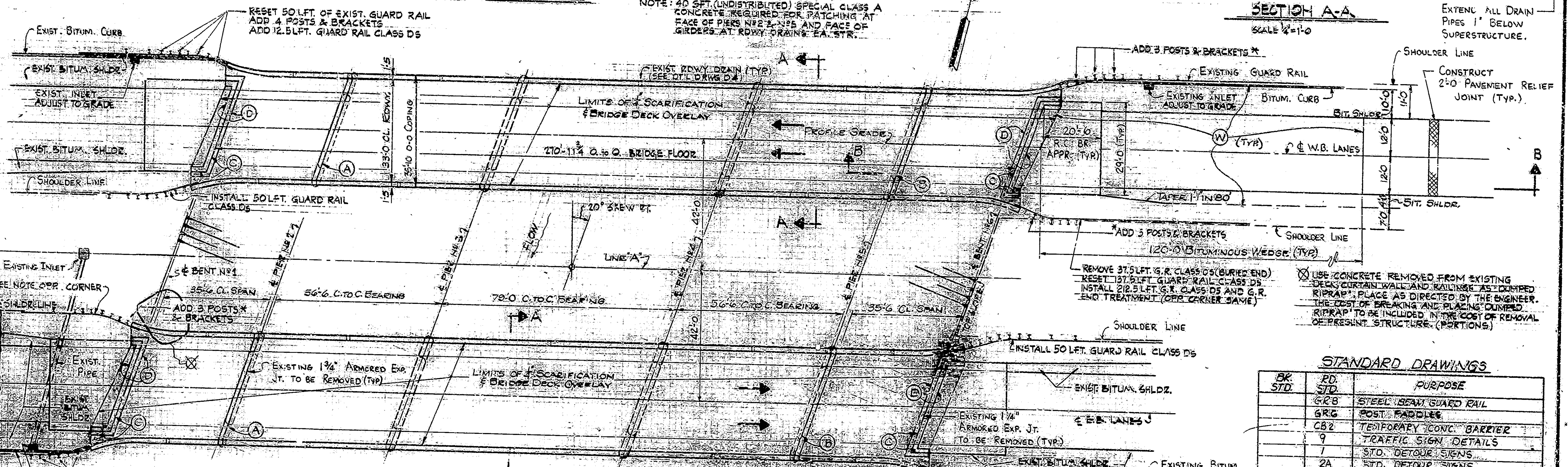
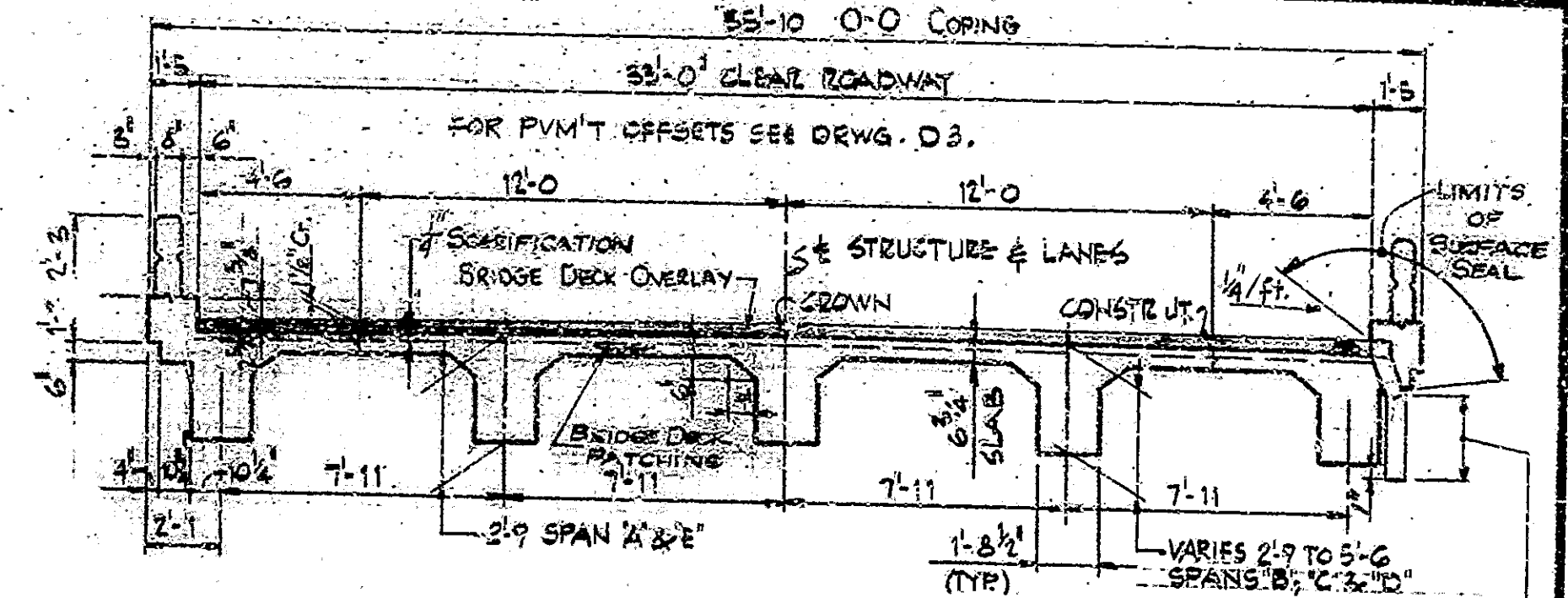
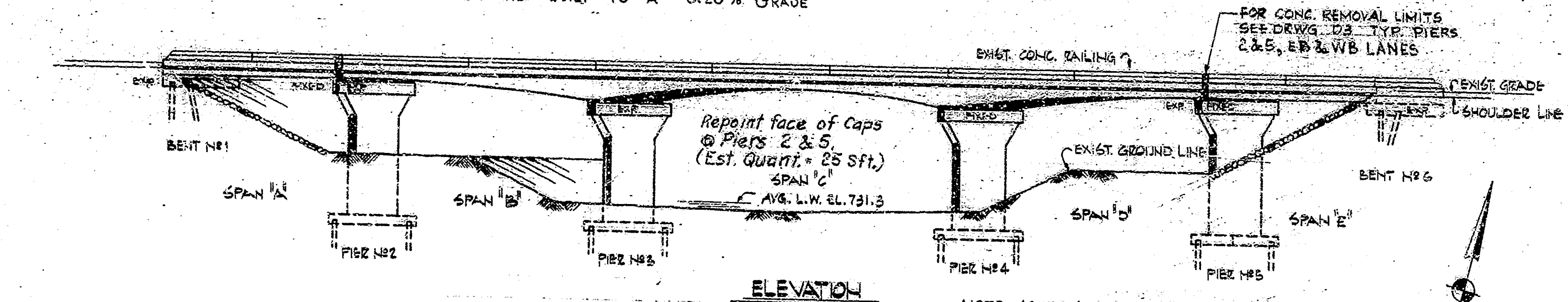
BRIDGE FILE: I-70-51-5178A

INDIANA STATE HIGHWAY COMMISSION
STANDARD SPECIFICATIONS DATED 1973
TO BE USED WITH THESE PLANS.

DATE	REVISIONS	BY	NO.

DATE	REVISIONS	BY	NO.

STRUCTURES BUILT TO A -0.28% GRADE



STANDARD DRAWINGS

BK. STD.	RD. STD.	PURPOSE
	GRB	STEEL BEAM GUARD RAIL
	GRG	POST RADDLES
	CB2	TEMPORARY CONC. BARRIER
	9	TRAFFIC SIGN DETAILS
	1	STD. DETOUR SIGNS
	2A	STD. DETOUR SIGNS
	3	STD. DETOUR SIGNS
	4	STD. DETOUR SIGNS
	5A	STD. DETOUR SIGNS
C1		REINFORCING BAR NOTES
C3		TYPE 'A' CONSTR. JT.
	GF10A	BREAKAWAY CABLE TERMINAL

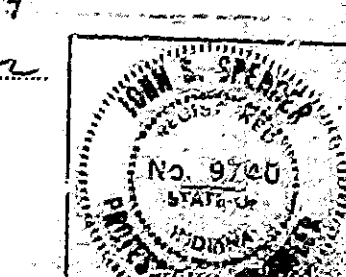
For GENERAL NOTES, CONSTRUCTION NOTES, & MATERIAL NOTES, SEE DRWG. D2.

GENERAL PLAN
BRIDGE DECK RECONSTRUCTION & OVERLAY
 CONTINUOUS R.C. GIRDER BRIDGES
 5 SPANS: 35'-6", 56'-6", 79'-0", 56'-6", 35'-6"
 TWIN STRUCTURES
 TWIN 28'-0" ROADWAYS, 2' COLLS, 20' SKEW RT.
 OVER MILL CREEK ON INTERSTATE TO

INDIANA STATE HIGHWAY COMMISSION
 PUTNAM COUNTY

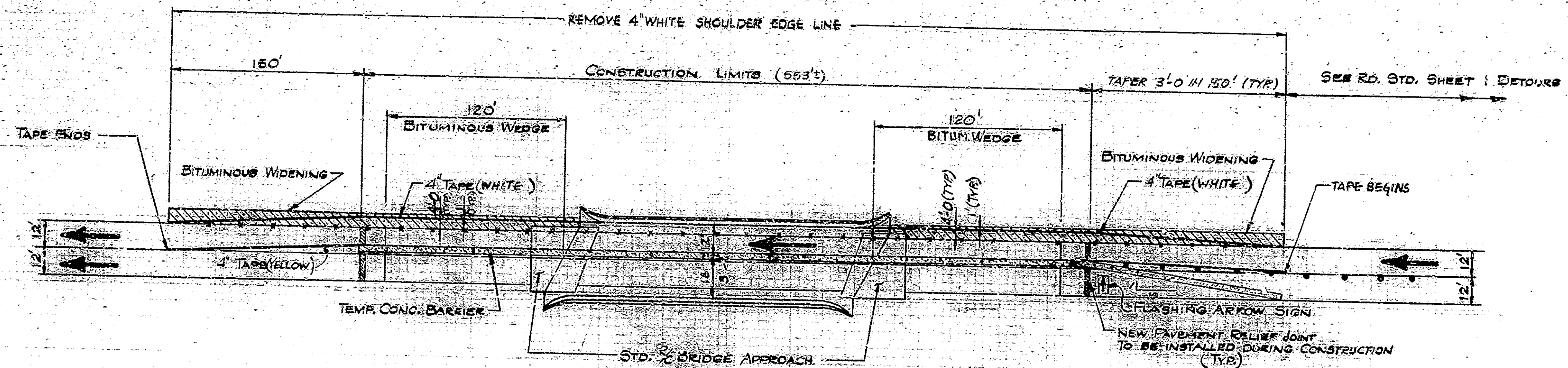
SCALE: 1/4"=1'-0", U.N. DATE: FEB. 22, 1979
 SUBMITTED FOR APPROVAL *John J. Spitzer*

DRAWING: D1 OF D4 SHEET: 3 OF 18
 PROJECT: I-FE-70-2(50)15
 CONTRACT NO. B-12105
 BRIDGE FILE: 1-12-1278



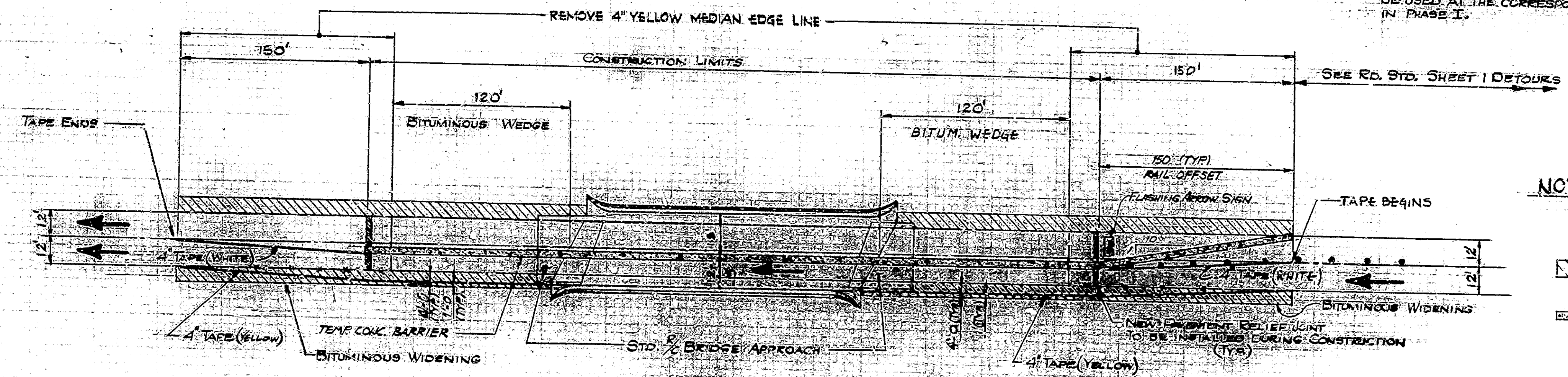
DESIGNED: CKD
 DRAWN: 6-17-78 CKD WRS, B-31-18
 TRACED: CKD

TO BE A CONTINUATION OF BRIDGE DECK PROFILE
 TAPER WEDGE UNIFORMLY TO MEET EXISTING ROADWAY SURFACE.
 USE BITUMINOUS MATERIAL FOR TACK COAT IN SYS.



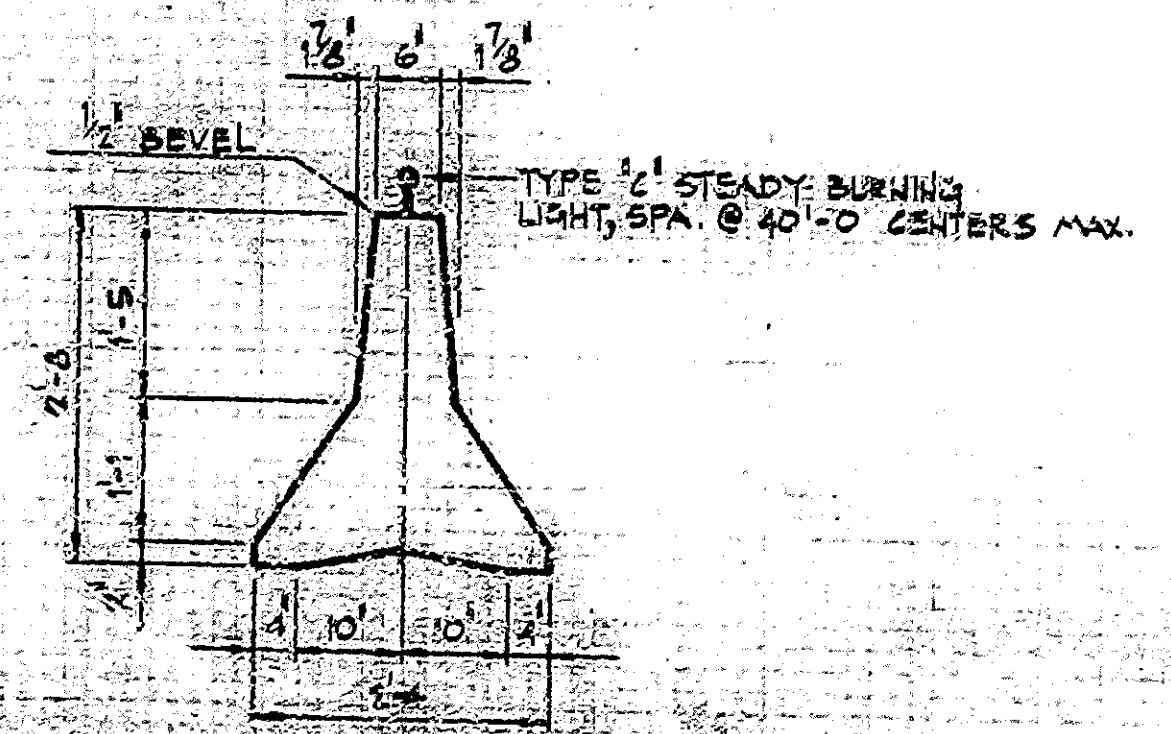
PHASE I W.B.L.
(E.B.L. SAME BY 180° ROTATION)

NOTE:
SEE ROAD STD. DETOUR SHEET 1 FOR
ADVANCE SIGNING AND MERGING FROM
2 LANE TO 4 LANE. THE 4" STRIP WHITE
CENTER LINE SHALL BE REMOVED IN
MERGE AREAS AND 4" WHITE TAPE PLACED
ADJACENT TO METAL DRUMS OR TYPE I
OR II BARRICADES THROUGH THE MERGE
AREA IN PHASE II. 4" YELLOW TAPE SHALL
BE USED AT THE CORRESPONDING LOCATION
IN PHASE I.



PHASE II W.B.L.
(E.B.L. SAME BY 180° ROTATION)

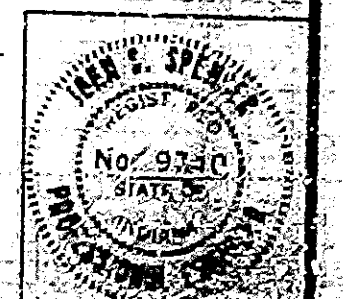
- NOTES:
- INDICATES METAL DRUM OR TYPE I OR II BARRICADE WITH TYPE "C" STEADY BURNING LIGHT. (NOT A PAY ITEM)
 - ▨ BITUMINOUS WIDENING: 990 LBS./SYS. BITUM. BASE TYPE 5D. BITUMINOUS WIDENING TO REMAIN IN PLACE.
 - ▭ TEMPORARY CONCRETE BARRIER RAILINGS. ONE LANE OF TRAFFIC SHALL BE MAINTAINED EACH WAY THROUGHOUT THE LENGTH OF THE PROJECT.
 - BITUMINOUS BASE TYPE 5D TO BE PAID FOR AS "BITUM. MIXTURE FOR APPROACHES".
 - INDICATES EXISTING PAVEMENT EDGE LINES TO BE REMOVED.



TRAFFIC MAINTENANCE DETAILS

INDIANA STATE HIGHWAY COMMISSION

SCALE: NONE
DATE: FEB. 22, 1979
SUBMITTED FOR APPROVAL: *John J. Spence*
DRAWING OF SHEET 2 OF 18
PROJECT: I-75 TO I-50 S1
CONTRACT NO. 12-12106
BRIDGE FILE: I-75-3178A



DESIGNED: CKD
DRAWN: R-8-17-79 CKD SP2898
TRACED: CKD

TEMPORARY CONCRETE BARRIER
THE CONTRACTOR SHALL BE RESPONSIBLE FOR THE PROTECTION OF ALL UTILITIES AND STRUCTURES TO BE MAINTAINED OR REMOVED DURING CONSTRUCTION.
SEE ROAD STD. DETOUR SHEET 1 FOR ADVANCE SIGNING AND MERGING FROM 2 LANE TO 4 LANE.

CONSTRUCTION PROCEDURE

1. Construct all bituminous widening. Erect signs and install temporary barrier railing and other traffic control devices to divert traffic to one lane of travel in each direction throughout the entire project.
2. Reconstruct girder vias and curtain walls at Piers 2 and 5.
3. Scarify the bridge deck and a portion of the bridge approach 1/4 inch. Scarify portions of the bridge floor an additional 1/4 inch as directed by the engineer. Scarify the existing pavement in the last 50'-0" of the bituminous wedge 1/4 inch.
4. Remove all deteriorated concrete below the level of scarification and remove concrete around reinforcement along curbs inaccessible to scarifying equipment and be required for installation of expansion joints by handchipping and cleaning in accordance with the Special Provisions.
5. Blast and clean all scarified and removal areas.
6. Construct overlay dams at bents and 6.
7. Place bridge deck patching and bridge deck overlay as shown on the plans and in accordance with the Special Provisions. Install expansion joints Type B.5 as shown on plans.
8. Clean and seal the tops and roadway face of curbs, top and both faces of concrete railing, and face of bridge coping.
9. Install guard rail Type D and add additional posts and brackets as shown on the plans.
10. Construct the bituminous wedges, pavement relief joints, earth barriers and all other work shown on the plans.
11. Reset traffic control devices to divert traffic to completed lanes and repeat steps 2-9. When all work is completed open structures to traffic.

The numbers do not necessarily indicate the sequence of operations.

Pneumatic hammers 30 lbs. maximum weight shall be used for all removals.

GENERAL NOTES

Plans for the existing structures are on file in the Bridge Dept. Indiana State Highway Commission as Bridge File No. I-70-51-5178.

Where new work is to be fitted to old work, the contractor shall check all dimensions and conditions in the field and report any errors or discrepancies to the engineer and assume responsibility for their correctness and the fit of the new part to the old.

The handchipping and cleaning of deteriorated deck areas shall be as directed by the engineer. It is the intent of these plans that all such deteriorated concrete be removed and should there be any doubt as to the quality of the concrete, removal shall continue until perfectly sound concrete is exposed. All existing non-full deck patches are to be removed.

Seal all joints and cracks in the approach pavement within the limits of the bituminous wedges, with a hot poured joint sealer before placing the bituminous wedges.

Concrete in deck patches up to the level of scarification shall be modified P.C. concrete or Special Class A concrete. See the Special Provisions.

All removed guard rail shall remain the property of the state.

For composition of concrete in overlay dams, see the Special Provisions.

All bituminous material required in this contract to be included in the pay item "Bituminous Mixture for Approaches" except tack coat which is to be paid for as a separate item.

MATERIAL NOTES

BITUMINOUS WIDENING
99% Type II Bituminous Base (Type 50)

PAVEMENT RELIEF JOINT
110% Type II Bituminous Surface Grade 11-B
over 1370 Type II Bituminous Base

BITUMINOUS WEDGE AND TACKING
110% Type II Bituminous Surface Grade 11-B
over 1370 Type II Bituminous Base
or base

BRIDGE DECK OVERLAY
1 1/4" Modified Portland Cement Concrete
2 1/2" Dense Portland Cement Concrete
(If overlaid on existing top of bridge floor)

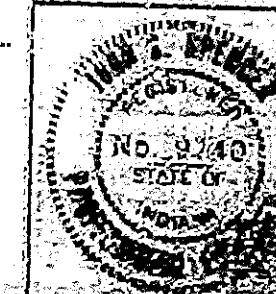
NOTES

INDIANA STATE HIGHWAY COMMISSION

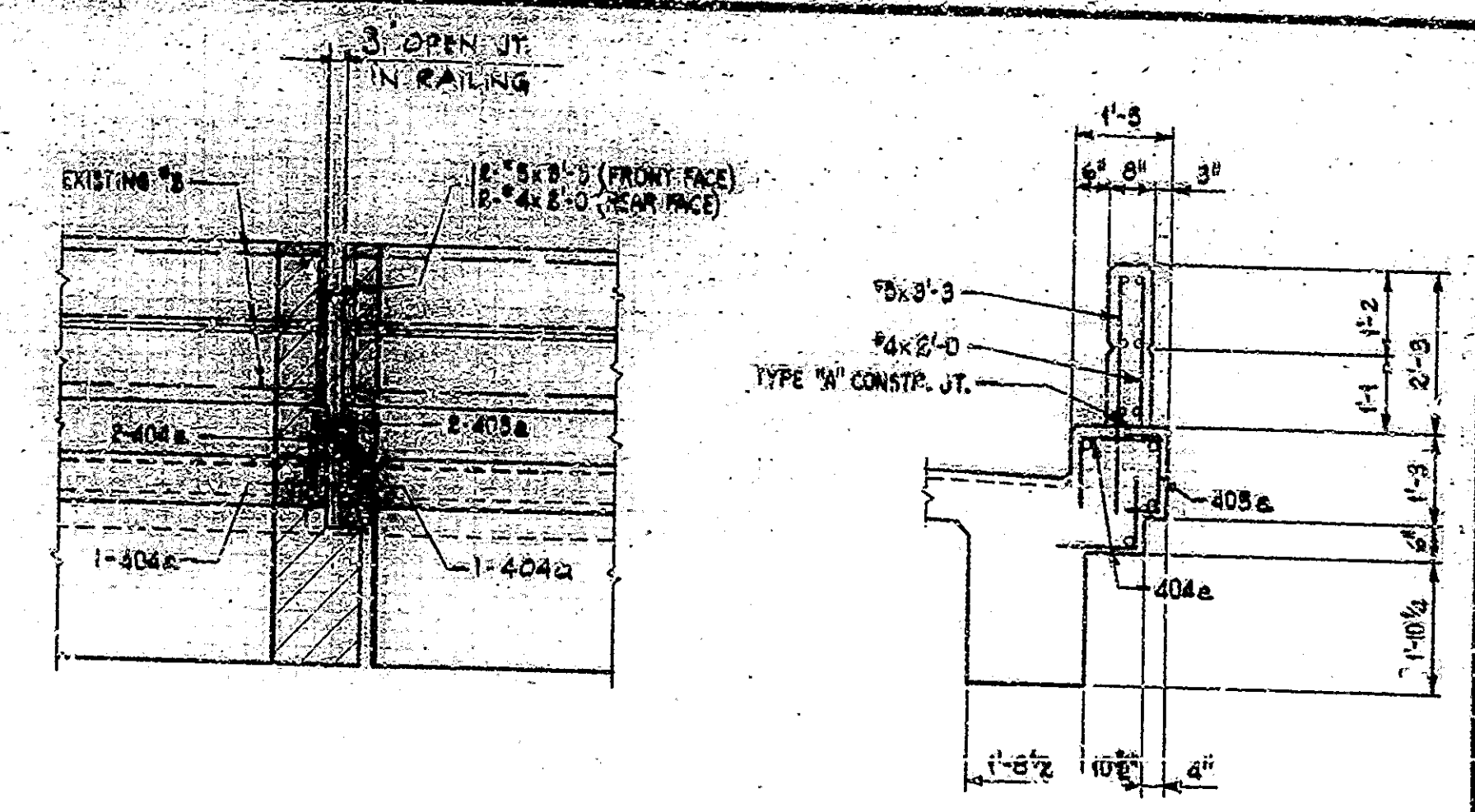
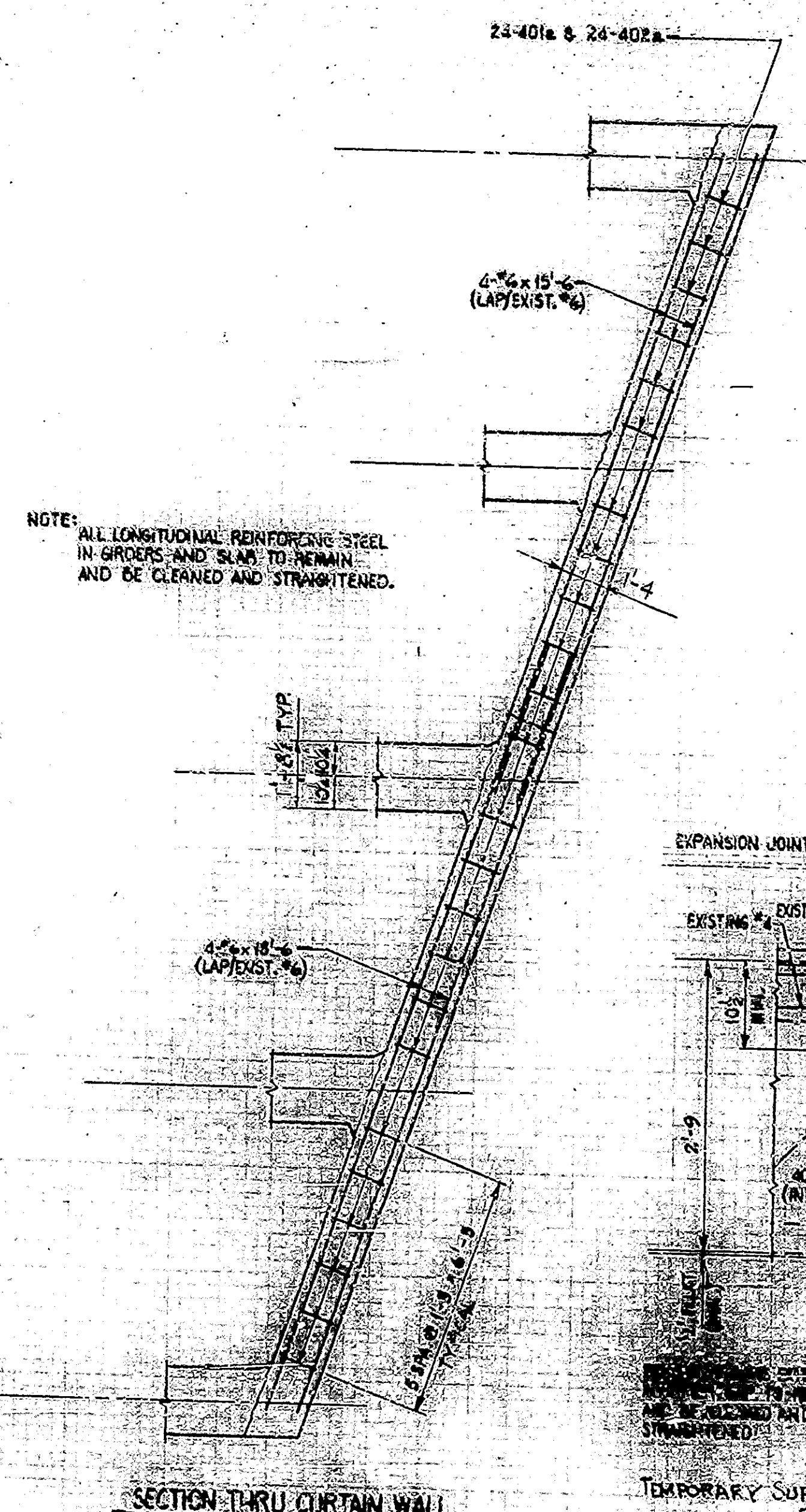
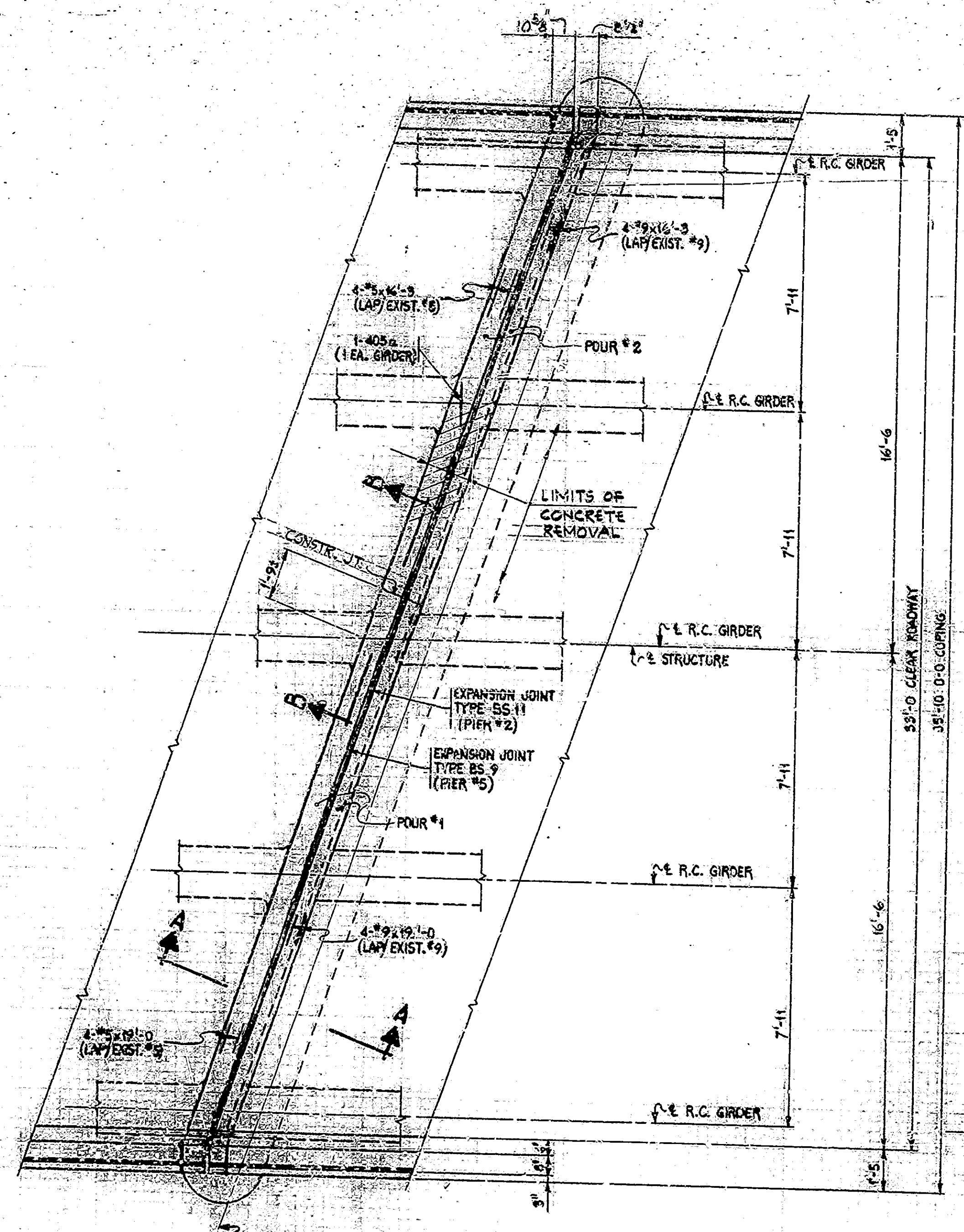
SCALE: None DATE: FEB. 22, 1979

SUBMITTED FOR APPROVAL *John E. Spencer*

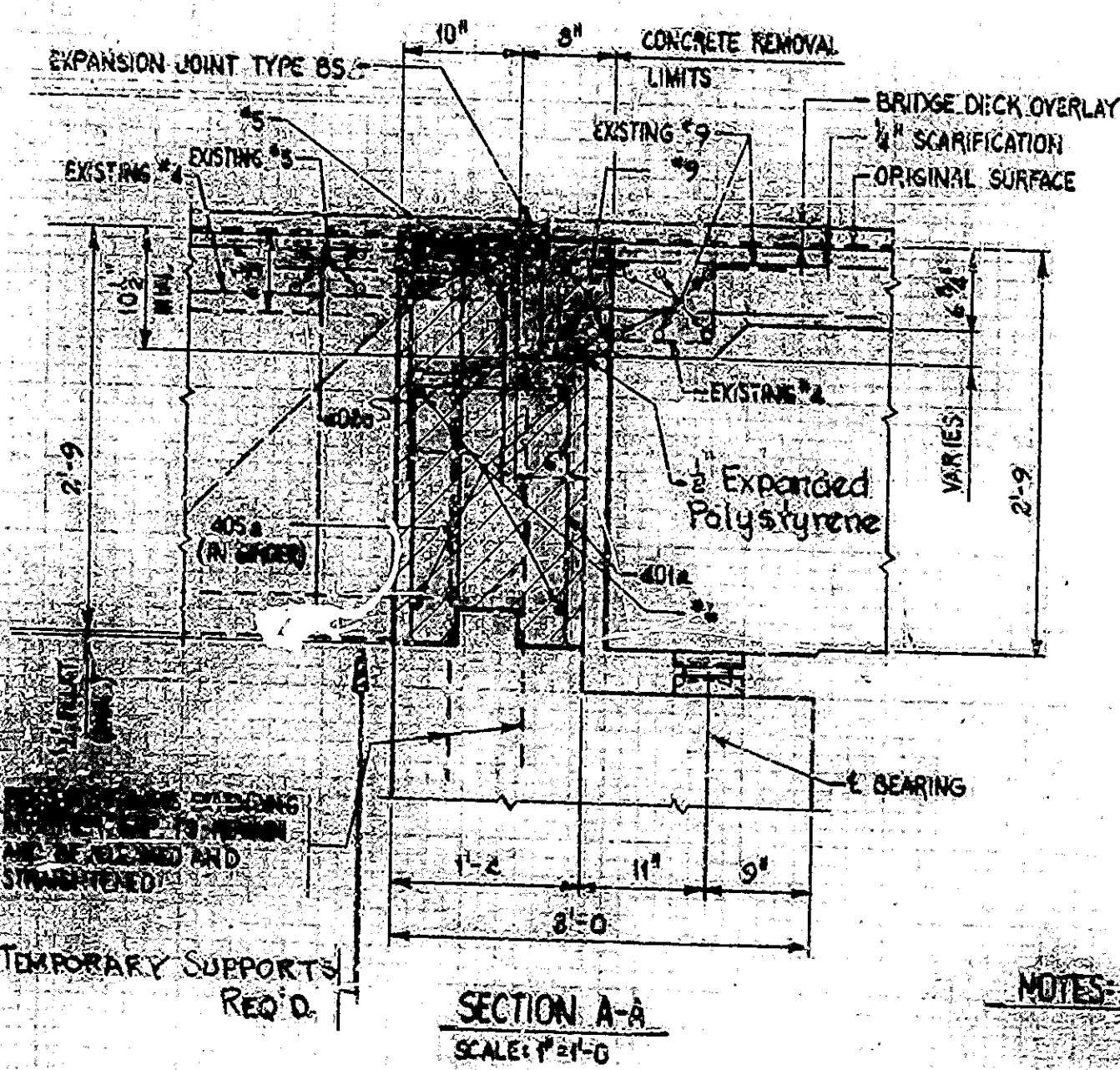
DRAWING 02 OF D-4 SHEET 4 OF 18
PROJECT: I-70-2(5)51
CONTRACT NO. E-1205
BRIDGE FILE: I-70-51-5178



DESIGNED: CKC
DRAWN: DP-B-3078 CKD WNG 2-31-78
TRACED: CKD

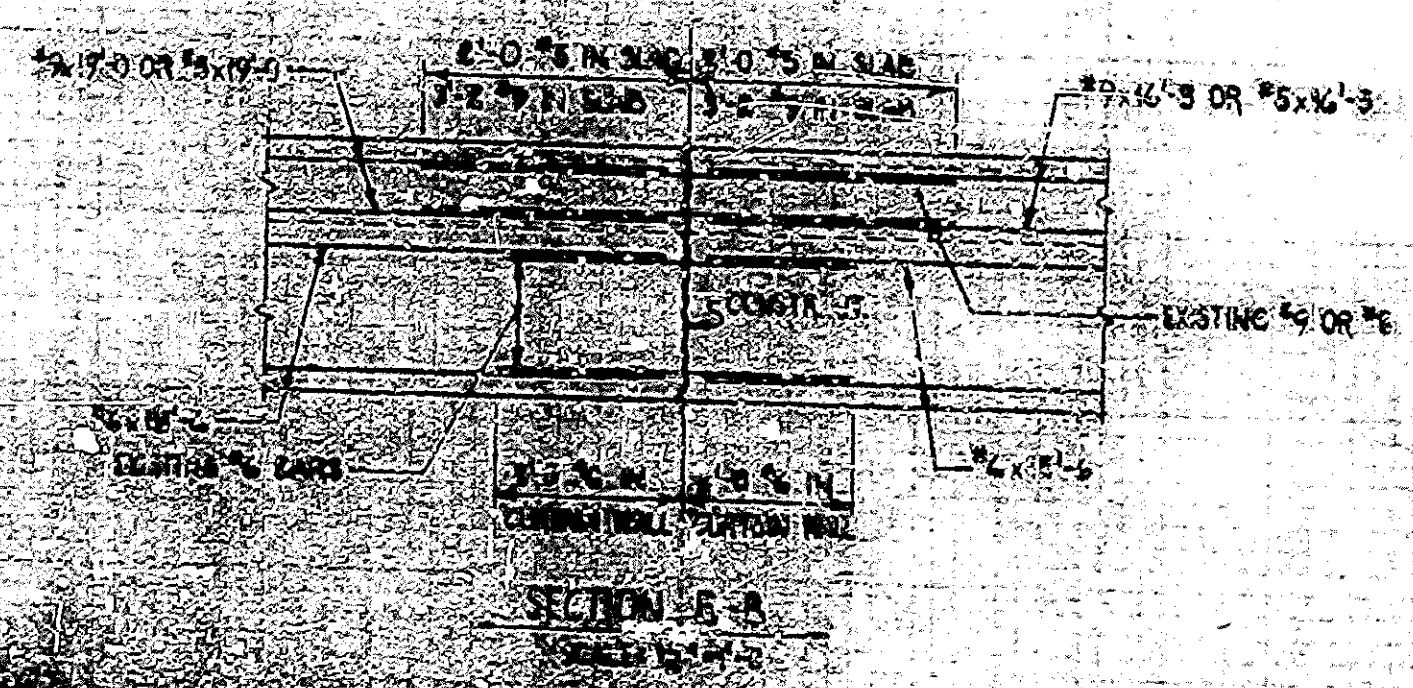
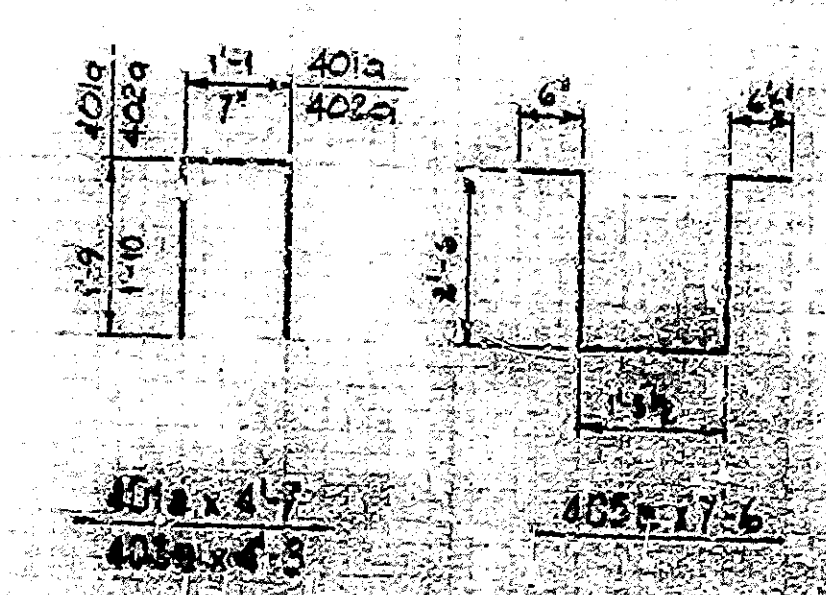
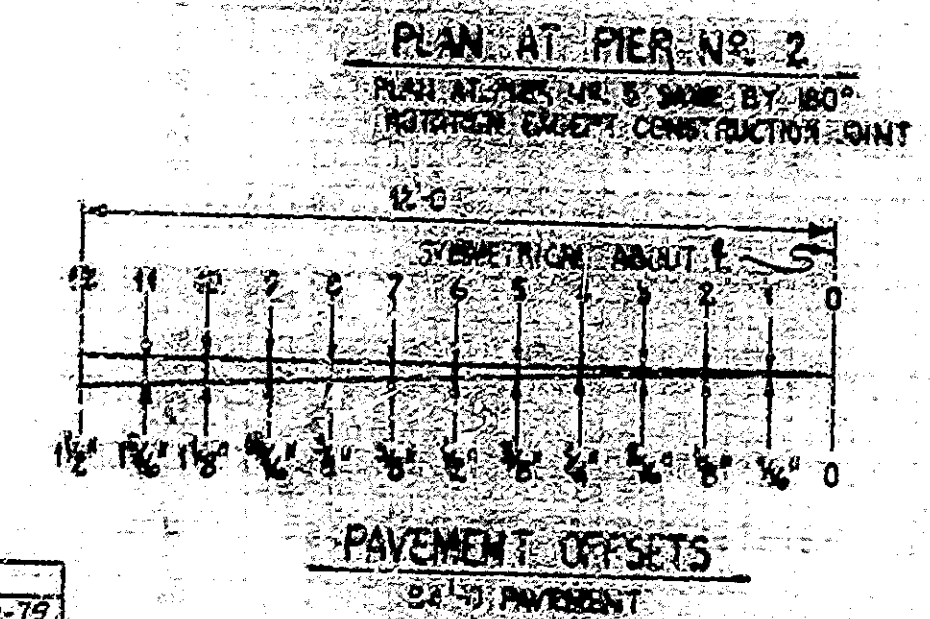


TYPICAL RAILING DETAILS
SCALE: 1/2" = 1'-0"



SECTION A-A
SCALE: 1/2" = 1'-0"

BILL OF MATERIAL PIER NO. 2			
PIER NO. 2 SAME			
REINFORCING STEEL			
SIZE & MARK	NUMBER OF BARS	LENGTH	WEIGHT (LBS.)
#9	4	19'-0"	
#9	4	16'-3"	
TOTAL NR. 9			479
#6	4	18'-6"	
#6	4	13'-6"	
TOTAL NR. 6			204
#5	4	19'-0"	
#5	4	16'-5"	
#5	4	3'-3"	
TOTAL NR. 5			161
401a	24	4'-7"	
402a	24	4'-5"	
403a	4	2'-0"	
404a	8	2'-2"	
405a	5	7'-6"	
#4	4	2'-0"	
TOTAL NR. 4			187
TOTAL REINFORCING STEEL			1059
CONCRETE			
CLASS 'A' IN SUPERSTR.			
FOUR (4)	103 CFS		
PIER #5	2 CFS		
TOTAL CLASS 'A' CONCRETE			105 CYS.



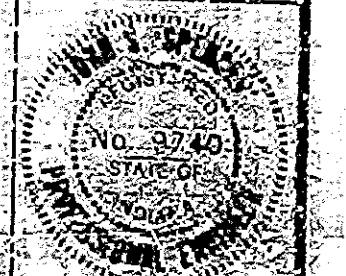
SECTION B-B
SCALE: 1/2" = 1'-0"

NOTES:
FOR REINFORCING BAR NOTES, SEE OR STD. C.
FOR FRAME CONSTRUCTION, SEE TRAFFIC MAINTENANCE SHEETS.
INDICATES PORTIONS OF PRESENT STRUCTURE TO BE REMOVED AND RECONSTRUCTED.

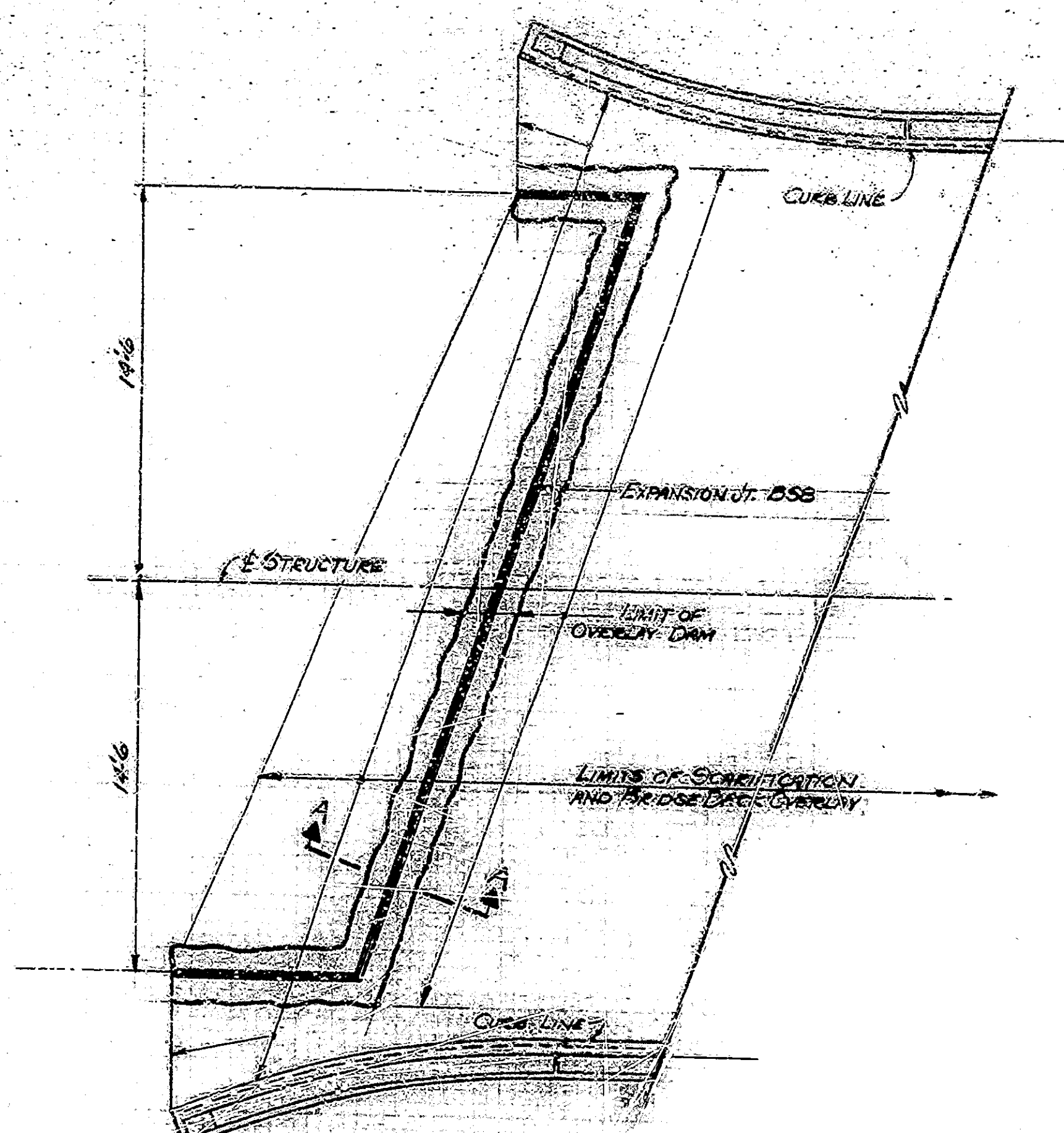
PIER NO. 2 & NO. 5 DETAILS & BILL OF MATERIALS

INDIANA STATE HIGHWAY COMMISSION

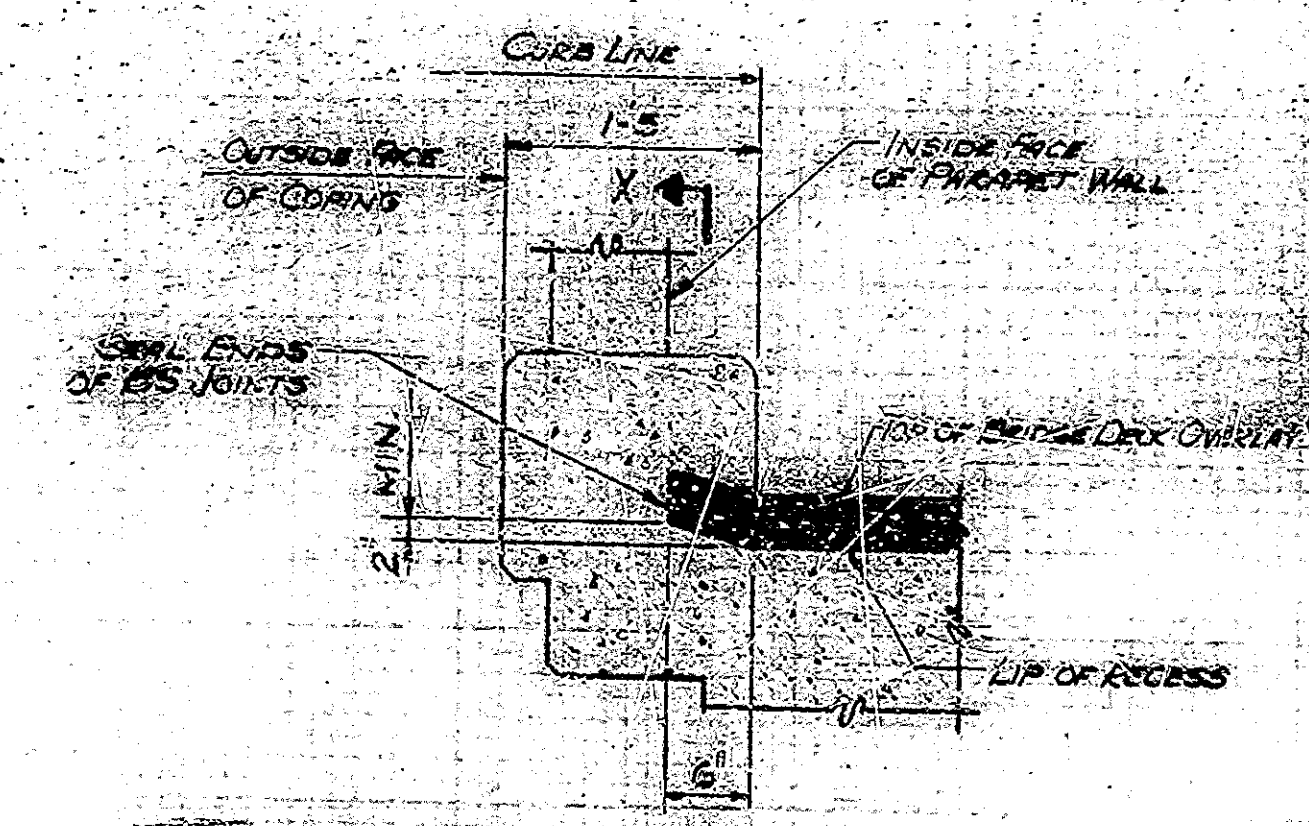
SCALE: 1/2" = 1'-0" UNLESS NOTED DATE: FEB 22, 1977
SUBMITTED FOR APPROVAL: *John J. Jones*
DRAWING: D.S. & D.H. SHEET 5 OF 10
PROJECT: I-57-10-11-11
CONTRACT NO. E-1175
BRIDGE FILE NO. 11-11-11-11



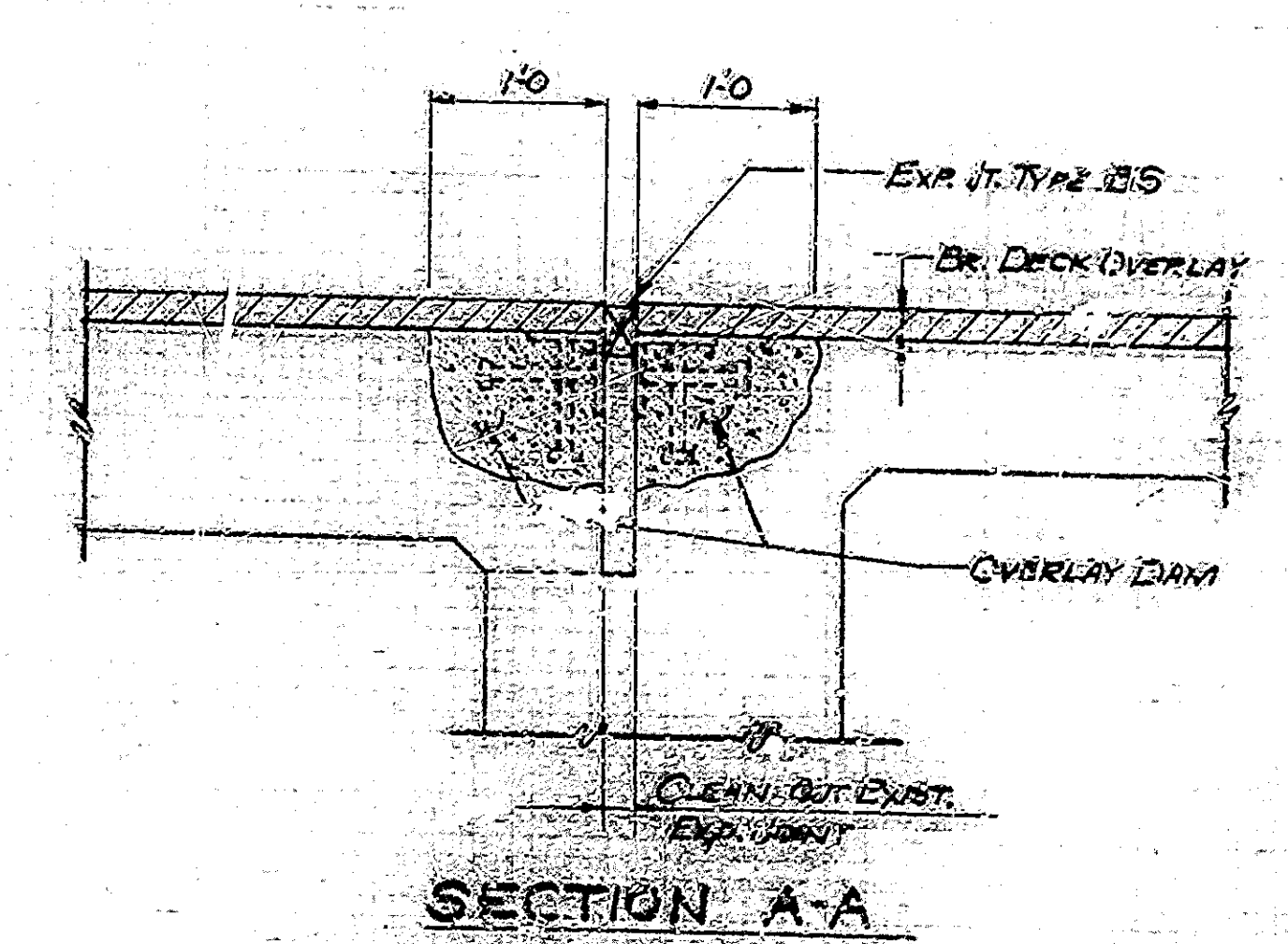
DESIGNED BY: C.F.D.
DRAWN BY: B.D.P. 2/15/77
CHECKED BY: C.F.D. 2-20-77
TRACED BY: C.F.D.



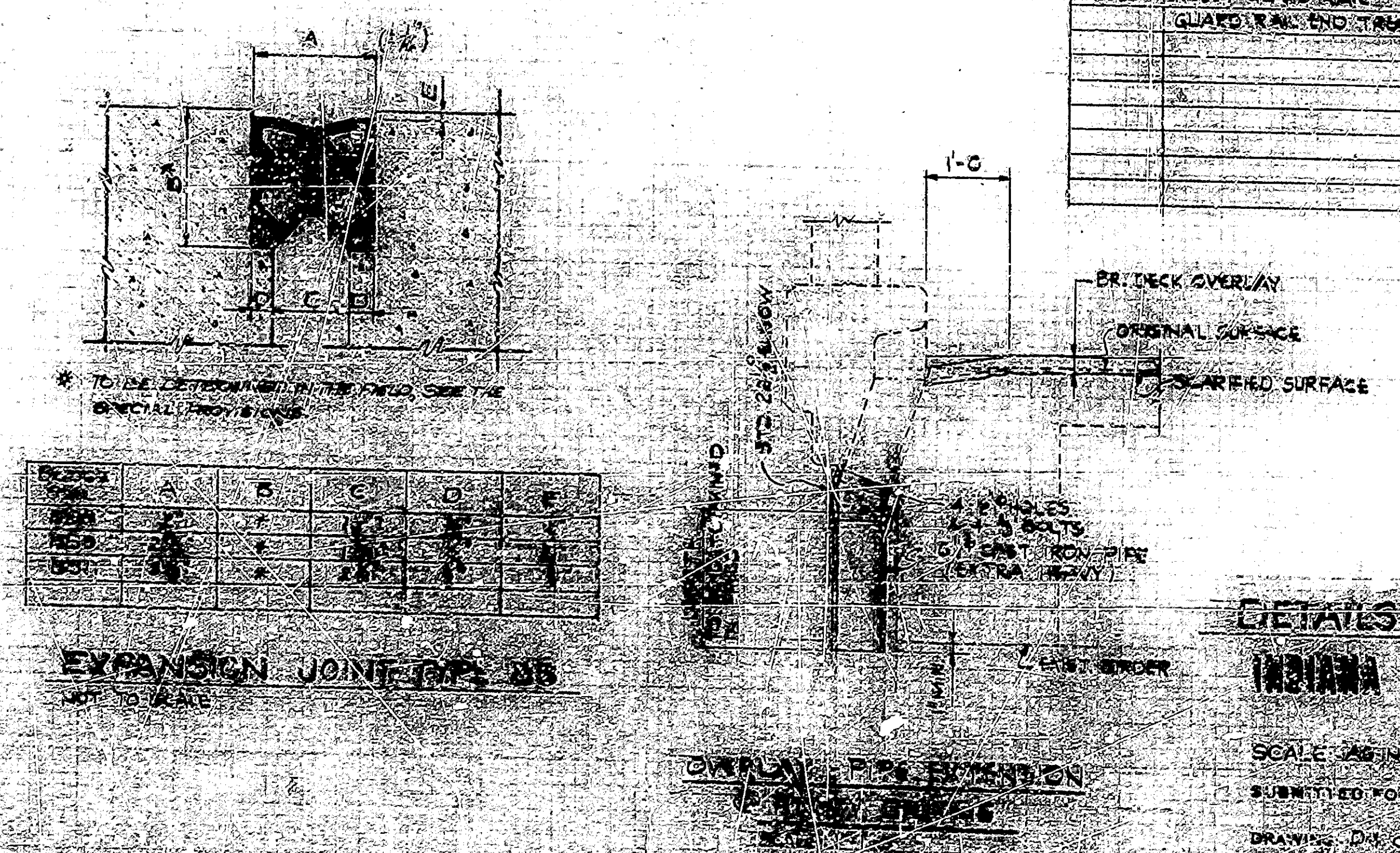
PLAN AT BENT NO. 1
 PLAN AT BENT NO. 6 SAME
 BY 180° ROTATION



TYPICAL BS JOINT
 INSTALLATION AT CURBS
 AT PIER NO. 2 ENDS



SECTION A-A



EXPANSION JOINT TYPE BSB

ESTIMATE OF QUANTITIES

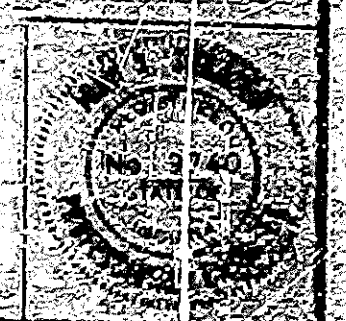
CODE NUMBER	DESCRIPTION	UNIT	TOTAL QUANTITY	FUNDING		
				STATE	FED. AID	OTHER
52470	BUILDING MIXTURE FOR APPROACHES	TONS	935			✓
52474	BUILDING MIXTURE FOR TACK COAT	SYS.	2010			✓
52475	1/2" SAND OVERLAY	SYS.	2069			✓
51822	CONCRETE SCARIFYING	SYS.	3082			✓
51823	ADDITIONAL CONCRETE SCARIFYING	SYS.	414			✓
51827	BLASTING / CLEANING	SYS.	2069			✓
51828	CHISELING / CURING	SYS.	2069			✓
51829	BRIDGE DECK PATCHING	SFT.	231			✓
51825	SEAL	SFT.	9828			✓
51826	SEAL	SFT.	340			✓
51827	EXPANSION JOINT TYPE BSB	LFT.	165			✓
51828	EXPANSION JOINT TYPE BSB	LFT.	79			✓
51829	EXPANSION JOINT TYPE BSB	LFT.	79			✓
52440	TEMPORARY CONCRETE BARRIER	LFT.	1406			✓
52440	MAINTAINING TRAFFIC	L. SUM	1			✓
51100	CAST IRON DRAIN PIPE 6"	LBS.	1216			✓
52345	GUARD RAIL TYPE D	L.F.T.	593			✓
52345	GUARD RAIL POSTS & BRACKETS TYPE D	EA.	20			✓
51875	REPOINTING MASONRY IN STRUCTURES	S.F.T.	25			✓
51875	SPECIAL CLASS A CONCRETE	S.F.T.	40			✓
52305	REMOVAL OF PAVEMENT	SYS.	22			✓
52340	CONSTRUCTION SIGN TYPE A	EA.	18			✓
52345	CONSTRUCTION SIGN TYPE B	EA.	4			✓
52366	REMOVAL OF LINE STRIP WHITE 4"	L.F.T.	445			✓
52366	TEMP. PAVEMENT MARKING ARE	L.F.T.	270			✓
52366	REMOVAL OF LINE STRIP YELLOW 4"	L.F.T.	600			✓
52366	REMOVAL OF LINE STRIP RED 4"	L.F.T.	1710			✓
52821	FLASHING / APPROACH	EA.	2			✓
52821	CASTING / APPROACH	EA.	4			✓
51323	REMOVAL OF PAVEMENT (CONCRETE)	L. SUM	1			✓
51801	CLASS A CONCRETE IN SUPERSTRUCTURE	CY.	208			✓
51830	REINFORCING STEEL	LBS.	4132			✓
52535	REMOVAL OF GUARD RAIL	L.F.T.	75			✓
06095	RESET GUARD RAIL	L.F.T.	375			✓
06095	GUARD RAIL END TREATMENT	EACH	2			✓

(a) DIRMINGUS WIDENING = 679 TONS
 WEDGE LEVEL = 225 TONS
 P.W.M. REPAIR JTS. = 21 TONS
 (b) INCLUDES 320 SQ. YDS. OF APPROACH SCARIFYING.

DETAILS AND ESTIMATE OF QUANTITIES
 INDIANA STATE HIGHWAY COMMISSION

SCALE: AS SHOWN DATE: FEB. 22, 1979
 SUBMITTED FOR APPROVAL: John J. Spencer
 DRAWING: D-10-04 SHEET 6 OF 8
 PROJECT: I-75/US-40
 CONTRACT NO. 1-1189
 BRIDGE FILE: 1-1189-1000

DESIGNED: CKD
 DRAWN: JEA 10-19-78
 CHECKED: CKD



I 75-1189-1000