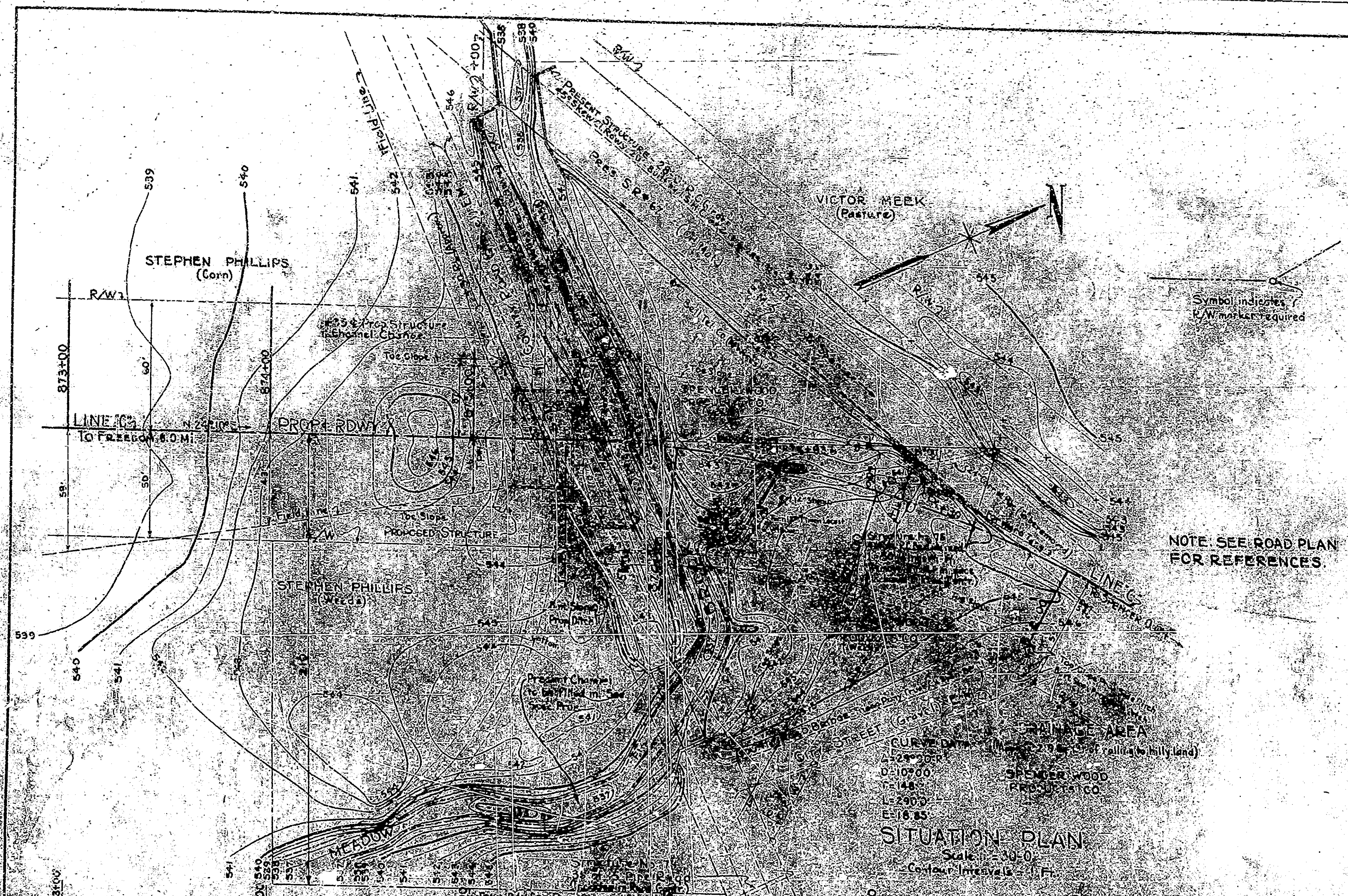


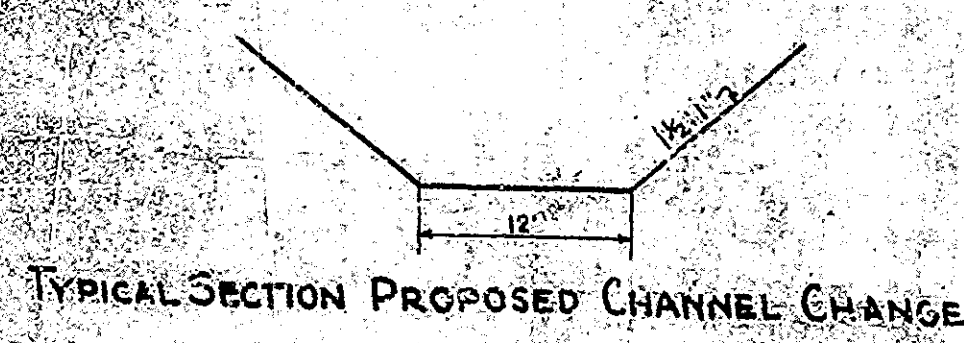
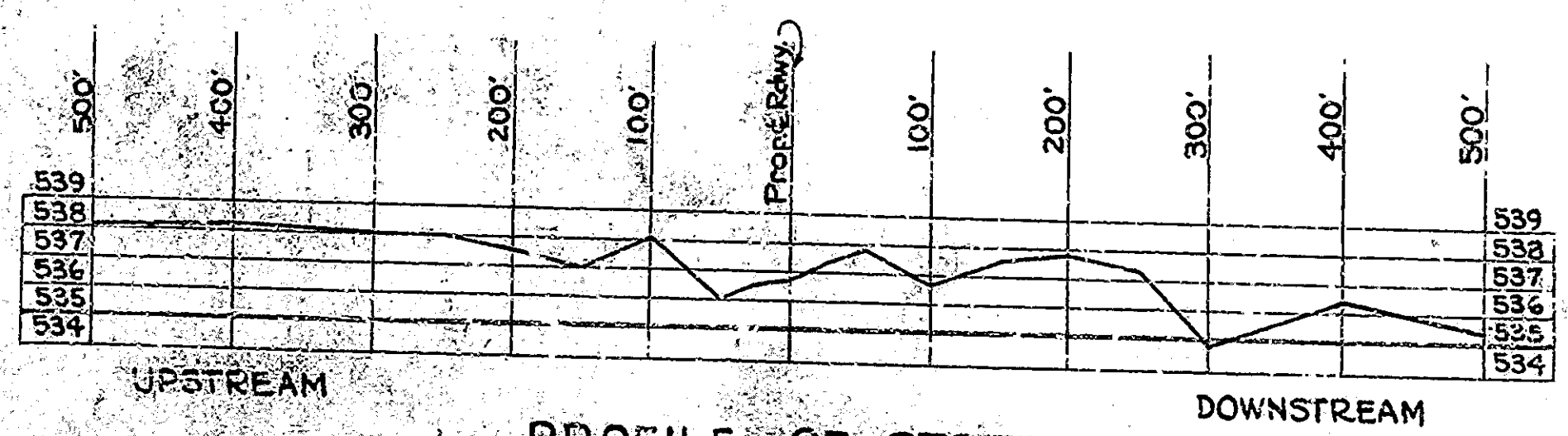
BRIDGES OVER 20' SPAN					
DISTRICT	STATE	PROJECT NO.	SECTION	SHEET NO.	TOTAL SHEETS
7	IND.	135	135-C	13	21

SECTION 'C'



NOTE.
STEEL TRUSS: 38'-0" CLEAR SPAN. LOCATED APPROX 105' R. OF STA. 876+12.
RDWY: 11'-7" W. OF OLD STEEL APPROX. 5 TONS.
SEE SPECIAL PROVISIONS.

NOTE SEE ROAD PLAN FOR REFERENCES.



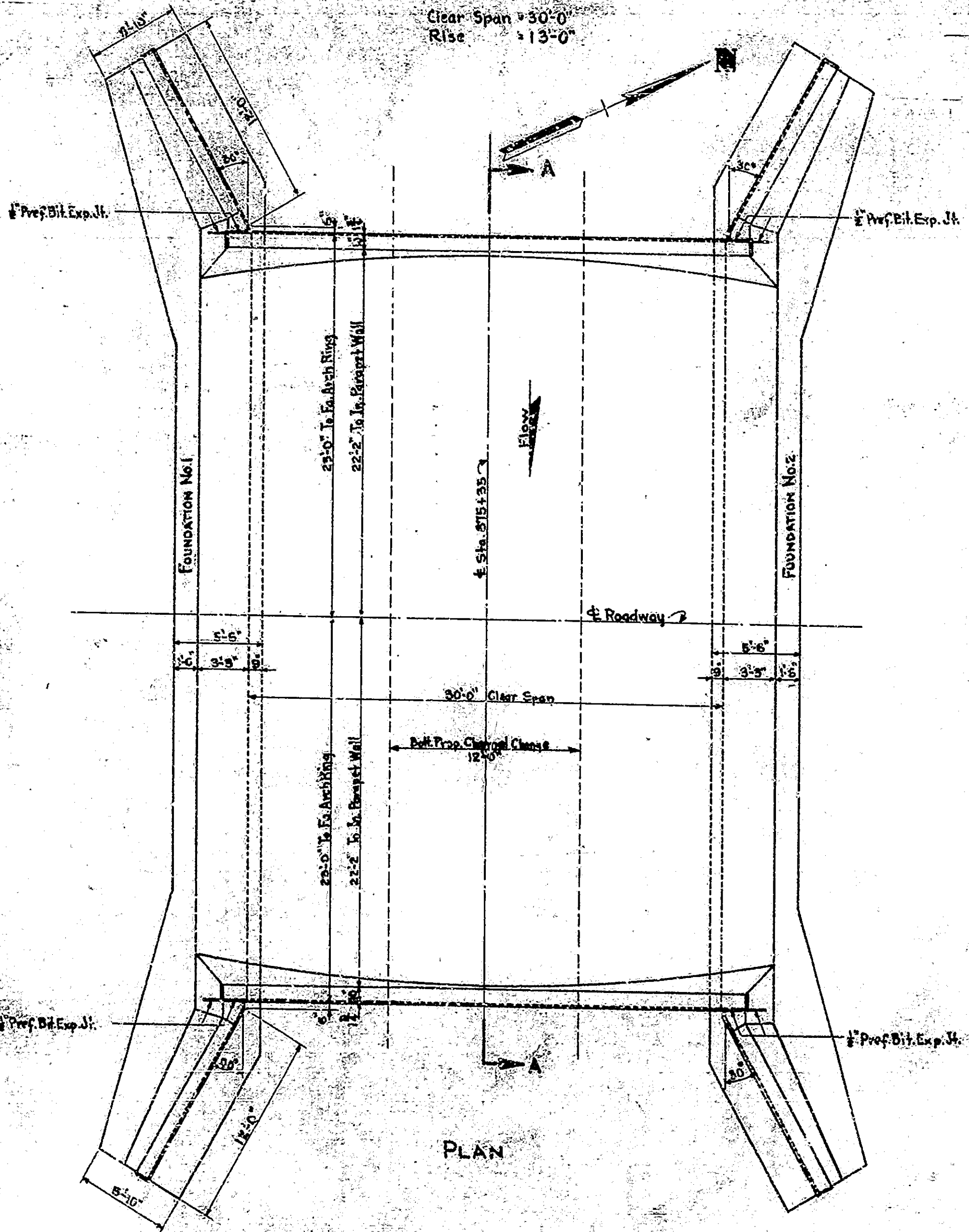
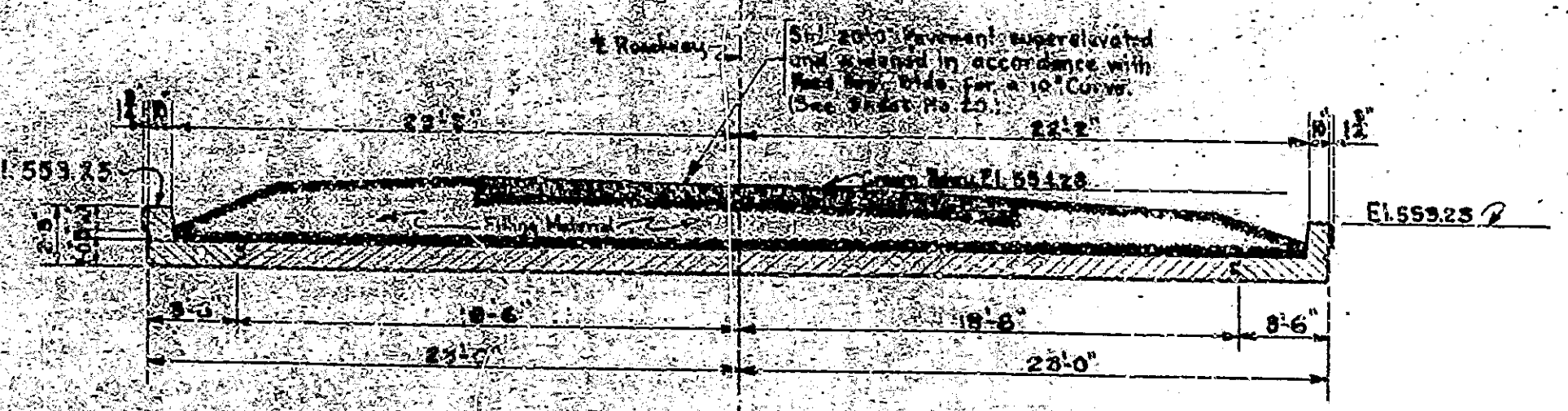
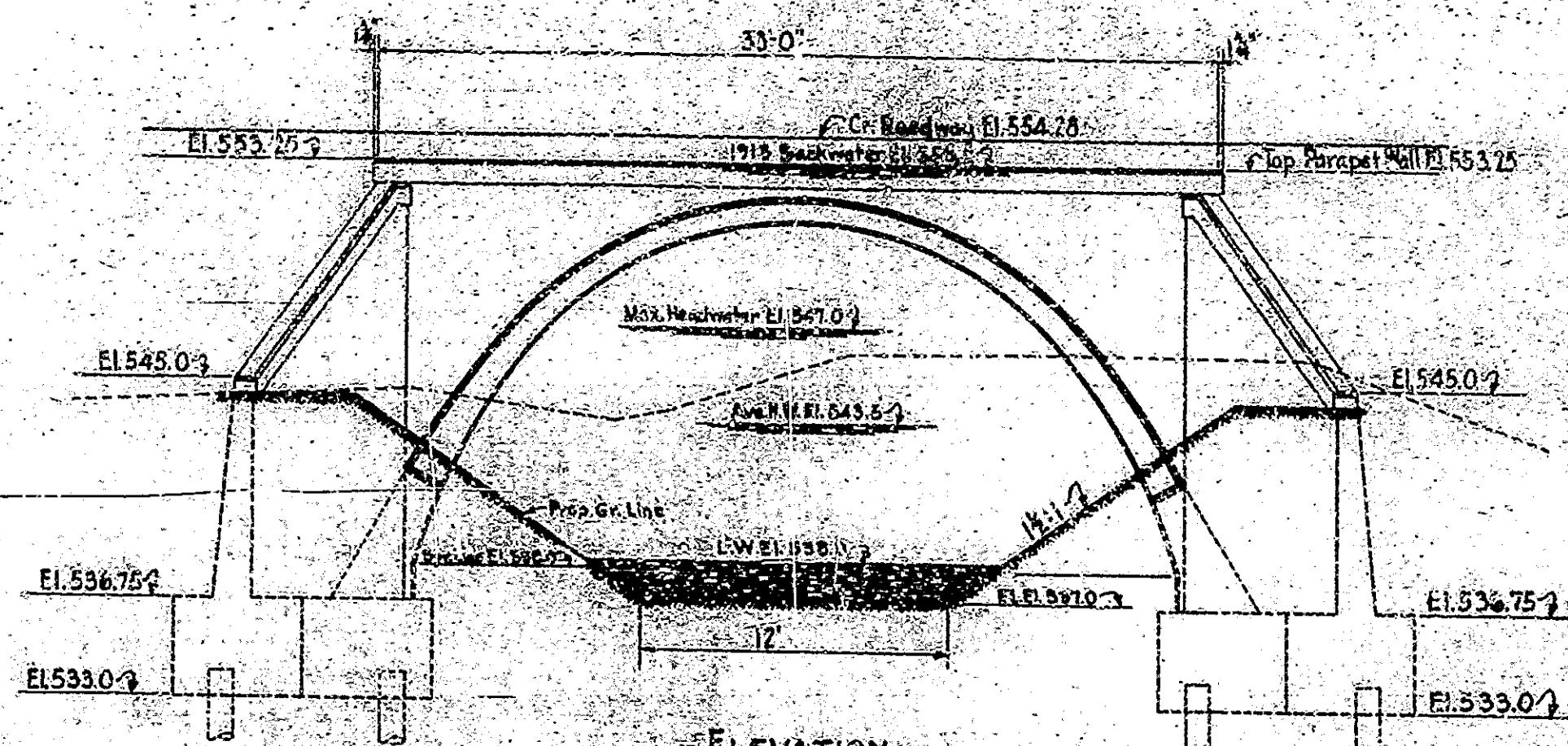
STATION	ELEVATION	DESCRIPTION
875+00	534.0	Left Bank
875+00	534.5	Right Bank
875+00	535.0	Top of Bank
875+00	535.5	Top of Bank
875+00	536.0	Top of Bank
875+00	536.5	Top of Bank
875+00	537.0	Top of Bank
875+00	537.5	Top of Bank
875+00	538.0	Top of Bank
875+00	538.5	Top of Bank
875+00	539.0	Top of Bank

NOTE THIS IS STRUCTURE NO. 3 ON ROAD PROJ. N.R.H. 135-C. SEE SHEET NO. 19 OF ROAD DEPT. PLANS FOR GRADE LINE, BENCH MARKS AND REFERENCES.

LAYOUT
REINFORCED CONCRETE BRIDGE
1 SPAN @ 38'-0" OVER MEADOW BROOK CREEK
38'-0" ROADWAY ON STATE ROAD - 67E
INDIANA STATE HIGHWAY COMMISSION
OWEN COUNTY

SCALE: AS NOTED
RECOMMENDED FOR APPROVAL: *[Signature]*
PROJECT: N.R.H. 135
SECTION: C
DRAWING: C-1 OF 3
APRIL 25, 1934
STATION: 875+35
STRUCTURE NO. 1554
BRIDGE CONTRACT NO. 681

REINFORCING STEEL		Quantity	Weight	Total Weight
1	Arch Ring (Class D)	100.0	100.0	100.0
2	Vertical Spandrel Walls (Class D)	100.0	100.0	100.0
3	Wings (Class D)	100.0	100.0	100.0
4	Wings (Class D)	100.0	100.0	100.0
5	Wings (Class D)	100.0	100.0	100.0
6	Wings (Class D)	100.0	100.0	100.0
7	Wings (Class D)	100.0	100.0	100.0
8	Wings (Class D)	100.0	100.0	100.0
9	Wings (Class D)	100.0	100.0	100.0
10	Wings (Class D)	100.0	100.0	100.0
11	Wings (Class D)	100.0	100.0	100.0
12	Wings (Class D)	100.0	100.0	100.0
13	Wings (Class D)	100.0	100.0	100.0
14	Wings (Class D)	100.0	100.0	100.0
15	Wings (Class D)	100.0	100.0	100.0
16	Wings (Class D)	100.0	100.0	100.0
17	Wings (Class D)	100.0	100.0	100.0
18	Wings (Class D)	100.0	100.0	100.0
19	Wings (Class D)	100.0	100.0	100.0
20	Wings (Class D)	100.0	100.0	100.0
21	Wings (Class D)	100.0	100.0	100.0
22	Wings (Class D)	100.0	100.0	100.0
23	Wings (Class D)	100.0	100.0	100.0
24	Wings (Class D)	100.0	100.0	100.0
25	Wings (Class D)	100.0	100.0	100.0
26	Wings (Class D)	100.0	100.0	100.0
27	Wings (Class D)	100.0	100.0	100.0
28	Wings (Class D)	100.0	100.0	100.0
29	Wings (Class D)	100.0	100.0	100.0
30	Wings (Class D)	100.0	100.0	100.0
31	Wings (Class D)	100.0	100.0	100.0
32	Wings (Class D)	100.0	100.0	100.0
33	Wings (Class D)	100.0	100.0	100.0
34	Wings (Class D)	100.0	100.0	100.0
35	Wings (Class D)	100.0	100.0	100.0
36	Wings (Class D)	100.0	100.0	100.0
37	Wings (Class D)	100.0	100.0	100.0
38	Wings (Class D)	100.0	100.0	100.0
39	Wings (Class D)	100.0	100.0	100.0
40	Wings (Class D)	100.0	100.0	100.0
41	Wings (Class D)	100.0	100.0	100.0
42	Wings (Class D)	100.0	100.0	100.0
43	Wings (Class D)	100.0	100.0	100.0
44	Wings (Class D)	100.0	100.0	100.0
45	Wings (Class D)	100.0	100.0	100.0
46	Wings (Class D)	100.0	100.0	100.0
47	Wings (Class D)	100.0	100.0	100.0
48	Wings (Class D)	100.0	100.0	100.0
49	Wings (Class D)	100.0	100.0	100.0
50	Wings (Class D)	100.0	100.0	100.0
51	Wings (Class D)	100.0	100.0	100.0
52	Wings (Class D)	100.0	100.0	100.0
53	Wings (Class D)	100.0	100.0	100.0
54	Wings (Class D)	100.0	100.0	100.0
55	Wings (Class D)	100.0	100.0	100.0
56	Wings (Class D)	100.0	100.0	100.0
57	Wings (Class D)	100.0	100.0	100.0
58	Wings (Class D)	100.0	100.0	100.0
59	Wings (Class D)	100.0	100.0	100.0
60	Wings (Class D)	100.0	100.0	100.0
61	Wings (Class D)	100.0	100.0	100.0
62	Wings (Class D)	100.0	100.0	100.0
63	Wings (Class D)	100.0	100.0	100.0
64	Wings (Class D)	100.0	100.0	100.0
65	Wings (Class D)	100.0	100.0	100.0
66	Wings (Class D)	100.0	100.0	100.0
67	Wings (Class D)	100.0	100.0	100.0
68	Wings (Class D)	100.0	100.0	100.0
69	Wings (Class D)	100.0	100.0	100.0
70	Wings (Class D)	100.0	100.0	100.0
71	Wings (Class D)	100.0	100.0	100.0
72	Wings (Class D)	100.0	100.0	100.0
73	Wings (Class D)	100.0	100.0	100.0
74	Wings (Class D)	100.0	100.0	100.0
75	Wings (Class D)	100.0	100.0	100.0
76	Wings (Class D)	100.0	100.0	100.0
77	Wings (Class D)	100.0	100.0	100.0
78	Wings (Class D)	100.0	100.0	100.0
79	Wings (Class D)	100.0	100.0	100.0
80	Wings (Class D)	100.0	100.0	100.0
81	Wings (Class D)	100.0	100.0	100.0
82	Wings (Class D)	100.0	100.0	100.0
83	Wings (Class D)	100.0	100.0	100.0
84	Wings (Class D)	100.0	100.0	100.0
85	Wings (Class D)	100.0	100.0	100.0
86	Wings (Class D)	100.0	100.0	100.0
87	Wings (Class D)	100.0	100.0	100.0
88	Wings (Class D)	100.0	100.0	100.0
89	Wings (Class D)	100.0	100.0	100.0
90	Wings (Class D)	100.0	100.0	100.0
91	Wings (Class D)	100.0	100.0	100.0
92	Wings (Class D)	100.0	100.0	100.0
93	Wings (Class D)	100.0	100.0	100.0
94	Wings (Class D)	100.0	100.0	100.0
95	Wings (Class D)	100.0	100.0	100.0
96	Wings (Class D)	100.0	100.0	100.0
97	Wings (Class D)	100.0	100.0	100.0
98	Wings (Class D)	100.0	100.0	100.0
99	Wings (Class D)	100.0	100.0	100.0
100	Wings (Class D)	100.0	100.0	100.0



GENERAL NOTES

Depth of Foundations to be checked if found necessary. See Art. C-114 of 1932 Supplement.

All concrete in footings, wing walls, and abutments on a Const. Jts. to be Class C.

All concrete in arch ring, above Const. Jts. and in spandrel walls to be Class D.

Reinforcing steel shall be embedded 3 diameters below springing line, 3 in wing walls and 2 in arch ring, spandrel walls and other parts.

Wing walls, abutments, arch ring and spandrel walls to be waterproofed in accordance with specifications.

If piles are required, they shall have bearing value as shown on Drawings and the length shall be determined in accordance with Art. C-101 of the 1932 Supplement.

Development in under side of all concrete.

Chamfer all exposed edges at external corners.

Fill over arch, if included in the contract.

CI Drains to extend 3' beyond faces of abutments and arch ring.

Reinforcing steel bar areas and weights in accordance with standards adopted April 1930 by Conc. Reinforcing Steel Institute.

See special provisions regarding the following special items included in this contract: Channel Change, Grading, Prec. County Bridge.

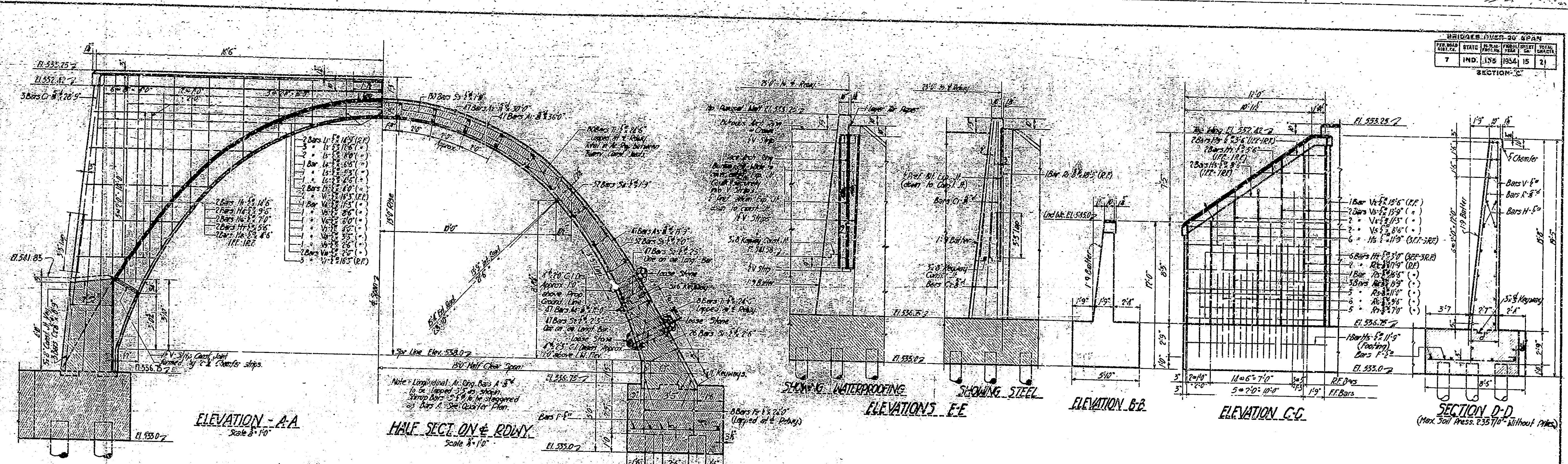
STANDARD C-8-G ROADWAY SECTION
See Sheet No. 17

GENERAL PLAN, BILL OF MATERIALS AND BENDING DIAGRAMS
REINFORCED CONCRETE BRIDGE
1 SPAN @ 30'-0"
OVER MEADOWBROOK CREEK
ON STATE ROAD 67-E
INDIANA STATE HIGHWAY COMMISSION
OWEN COUNTY
SCALE: 1" = 10'
RECOMMENDED FOR APPROVAL: [Signature]
PROJECT: R.R. 135
SECTION: C
DRAWING: C-8-G
APRIL 25, 1934
STATION: 875+35
BRIDGE CONTRACT NO. 28
STRUCTURE NO. 1556

ISSUED: 4-25-34
CHECKED: [Signature]
DRAWN: [Signature]

BRIDGE FILE 67-E-1556

BRIDGE OVER 30' SPAN	
PER. NO.	STAT. NO.
7	IND. 155
IND.	155
15	2
SECTION - C	



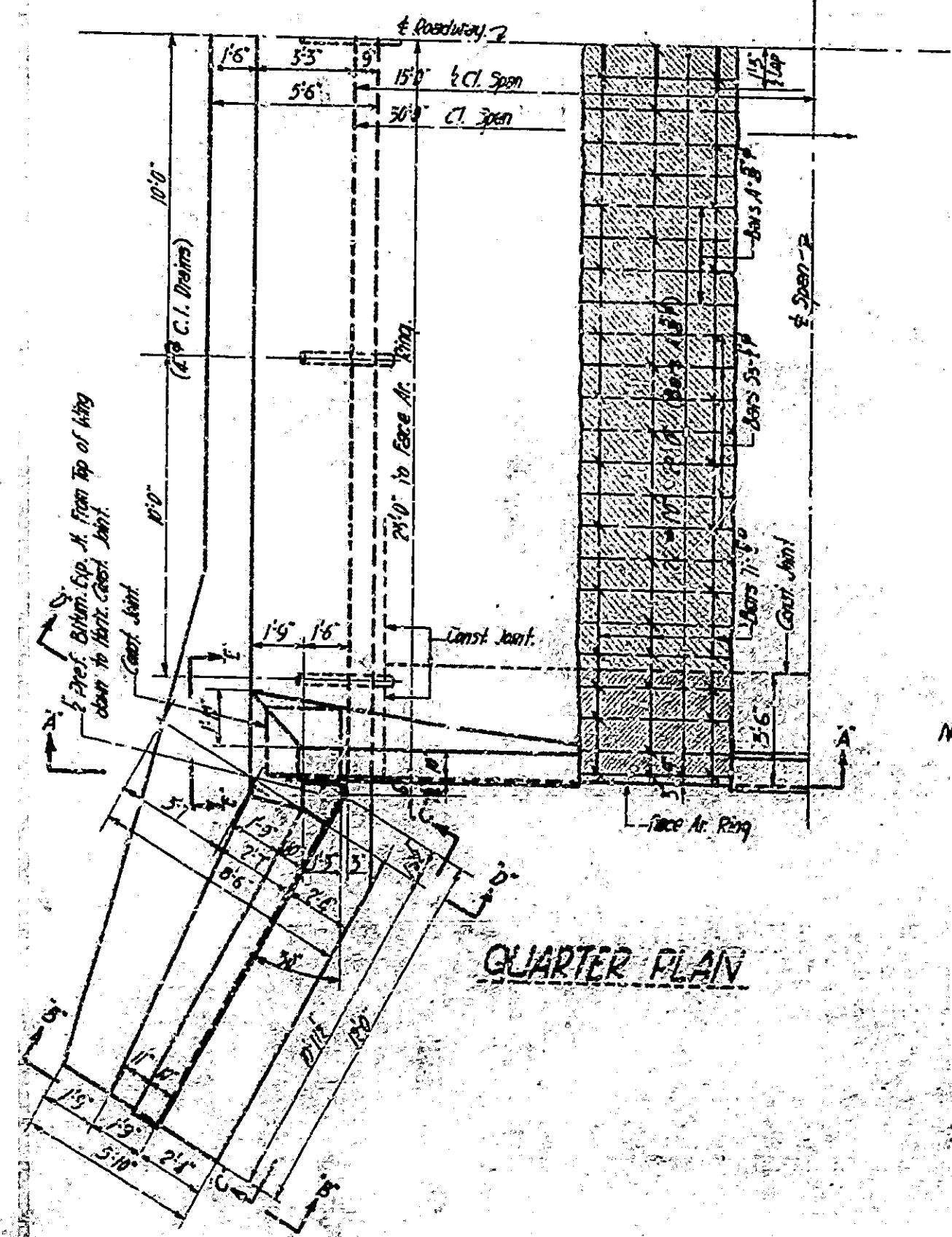
ELEVATION - A-A
Scale 1/4" = 1'-0"

HALF SECT. ON ROADWAY
Scale 1/4" = 1'-0"

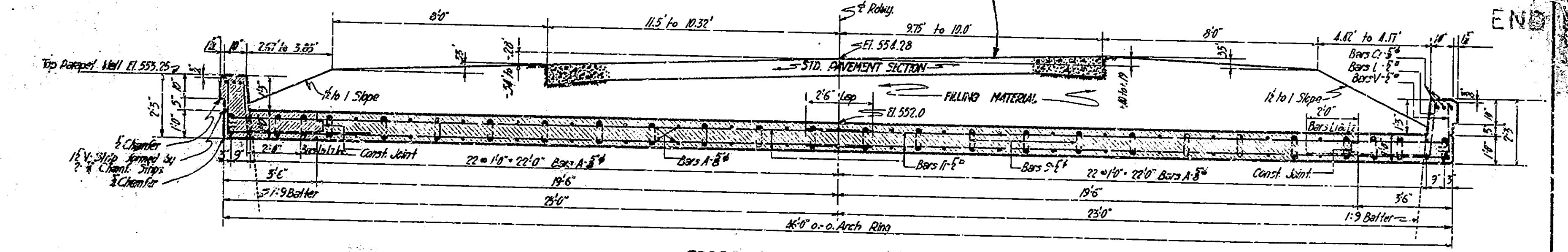
ABUTMENT SECTION
Max. Soil Press. 2.35 T/Sq Ft. (Without Piles)

ELEVATIONS B-B & C-C
Scale 1/4" = 1'-0"

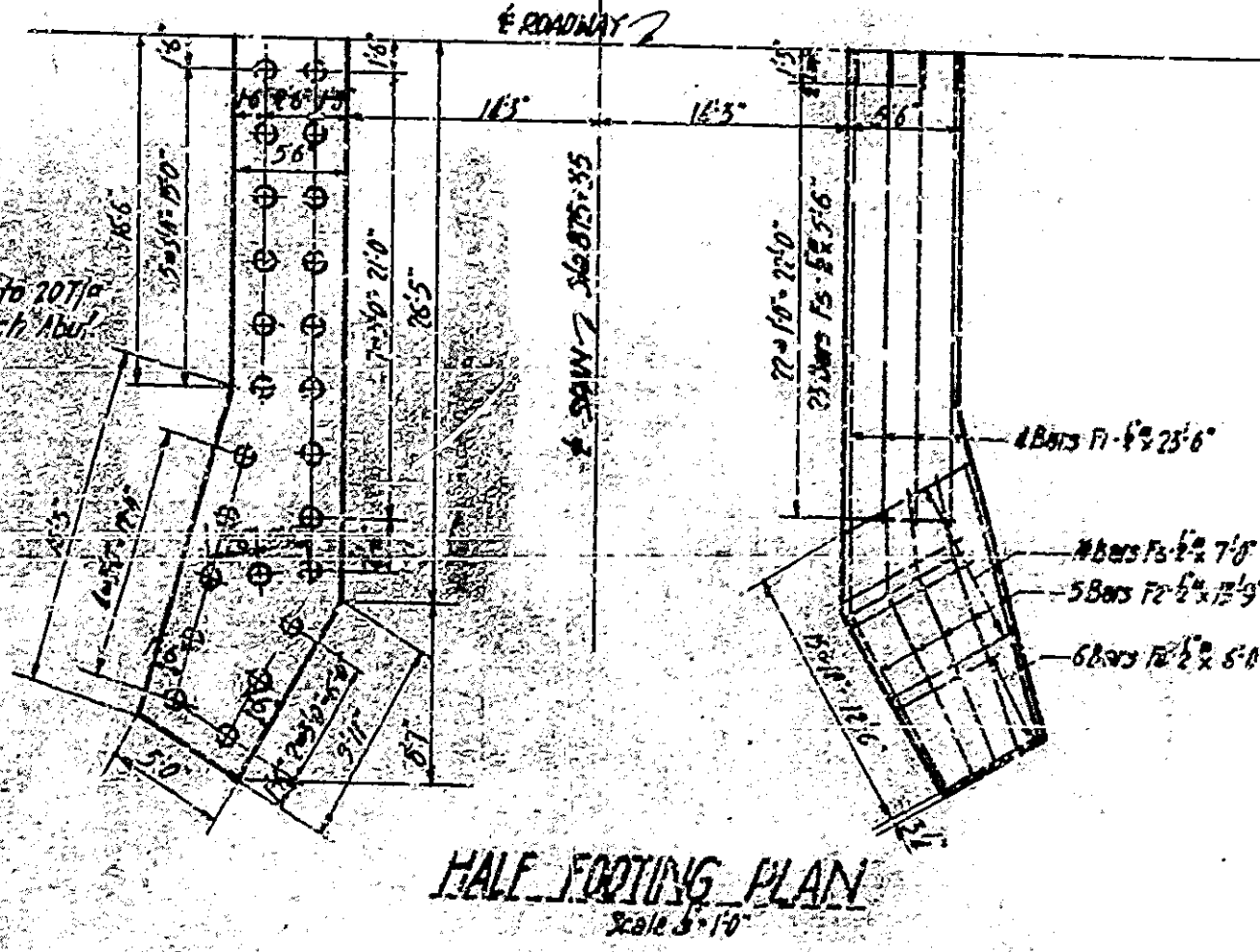
SECTION D-D
(Max. Soil Press. 2.35 T/Sq Ft. Without Piles)



QUARTER PLAN
Scale 1/4" = 1'-0"



CROSS SECTION AT SPAN
Scale 1/4" = 1'-0"



HALF FOOTING PLAN
Scale 1/4" = 1'-0"

DETAILS
REINFORCED CONCRETE BRIDGE
 1 SPAN 30'-0" OVER MEADOWBROOK CREEK
 36'-0" ROADWAY ON STATE ROAD 67E
INDIANA STATE HIGHWAY COMMISSION
 OWEN COUNTY
 SCALE: 1/4" = 1'-0" UNLESS NOTED
 RECOMMENDED FOR APPROVAL: [Signature]
 PROJECT: HRN 155
 SECTION: C
 DRAWING: 2 OF 3
 APRIL 25, 1934
 STATION: - 875+35
 BRIDGE CONTRACT NO. 831
 STRUCTURE NO. 1556

DRAWN BY: L. J. [unclear]
 CHECKED BY: [unclear]
 DATE: [unclear]

BRIDGE FILE 67 E-1556