



INDIANA DEPARTMENT OF TRANSPORTATION
100 North Senate Avenue
Room N755
Indianapolis, Indiana 46204-2228
(317) 232-5533 FAX: (317) 232-0238
An Equal Opportunity Employer • <http://www.in.gov/dot>

Mitchell E. Daniels, Jr., Governor
Thomas O. Sharp, Commissioner

Writer's Direct Line
(317) 232-5502

July 26, 2005

MEMORANDUM
05-12

To: District Directors
Toll Road Operations Engineers
District Construction Engineers
District Area Engineers
Project Engineers/Supervisors
District Development Engineers

FROM: Dennis A. Kuchler, Chief
Contracts and Construction Division

RE: Guardrail Transitions, Type TGS-1

A handwritten signature in black ink, appearing to read "D. Kuchler", is written over the typed name "Dennis A. Kuchler, Chief".

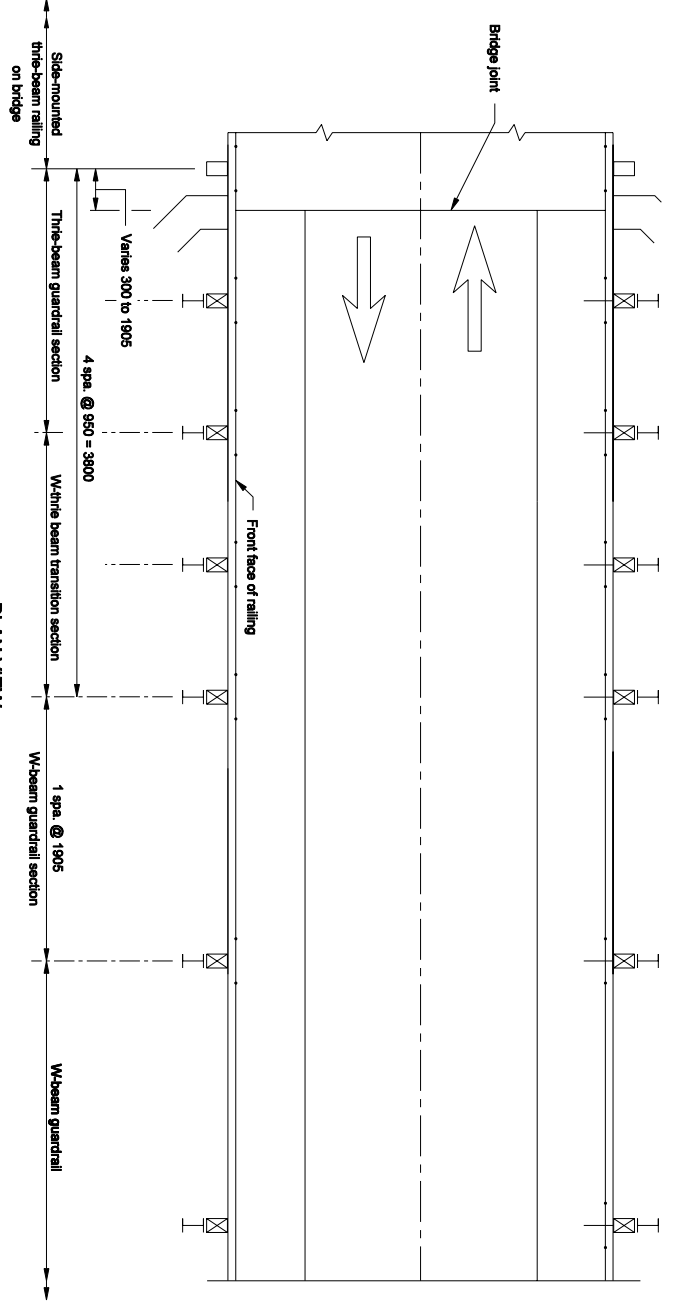
It has been discovered that Recurring Plan Detail 706-B-140d, Sheet 3 of 3 dated July 1, 2001 has an inconsistency in the number of posts required in the 3800 mm (12' - 6"). The elevation view indicates 4 posts are required and the plan view reflects 2 posts.

The correct number of posts is 4 spaced at 950 mm (3' - 1 1/2"). The Recurring Plan Detail has been corrected and a copy is attached.

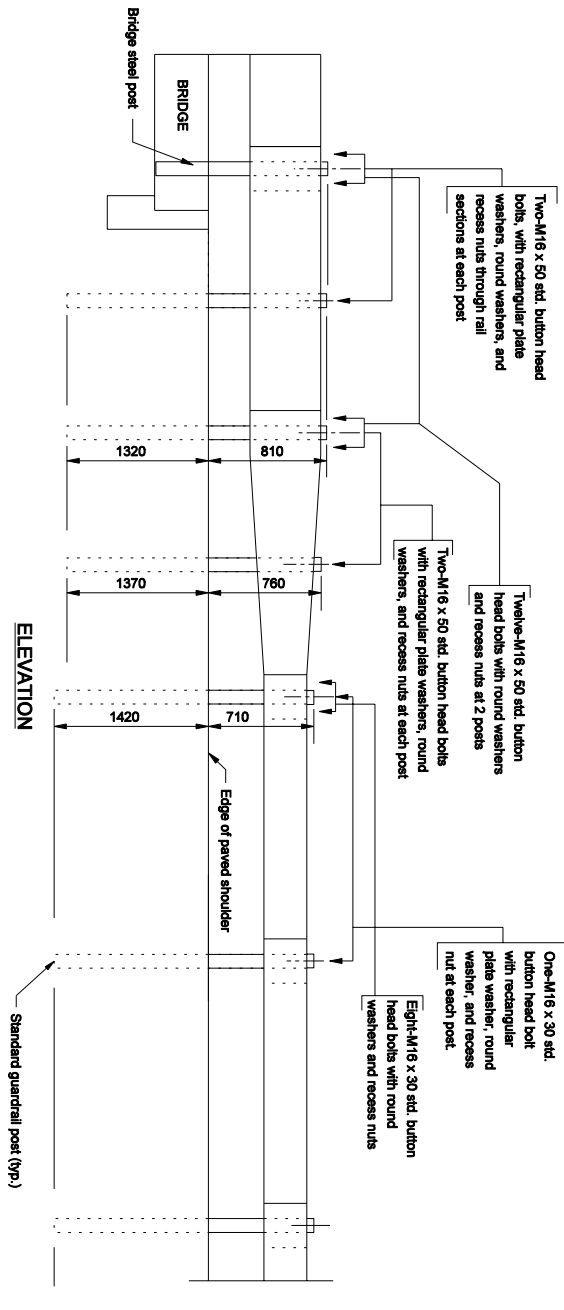
All existing contracts containing bridge railing type TS-1 and guardrail transitions type TGS-1 must be revised to include the 4 posts.

DAK:dls

Cc: Gary Mroczka, Design Division Chief



PLAN VIEW



ELEVATION

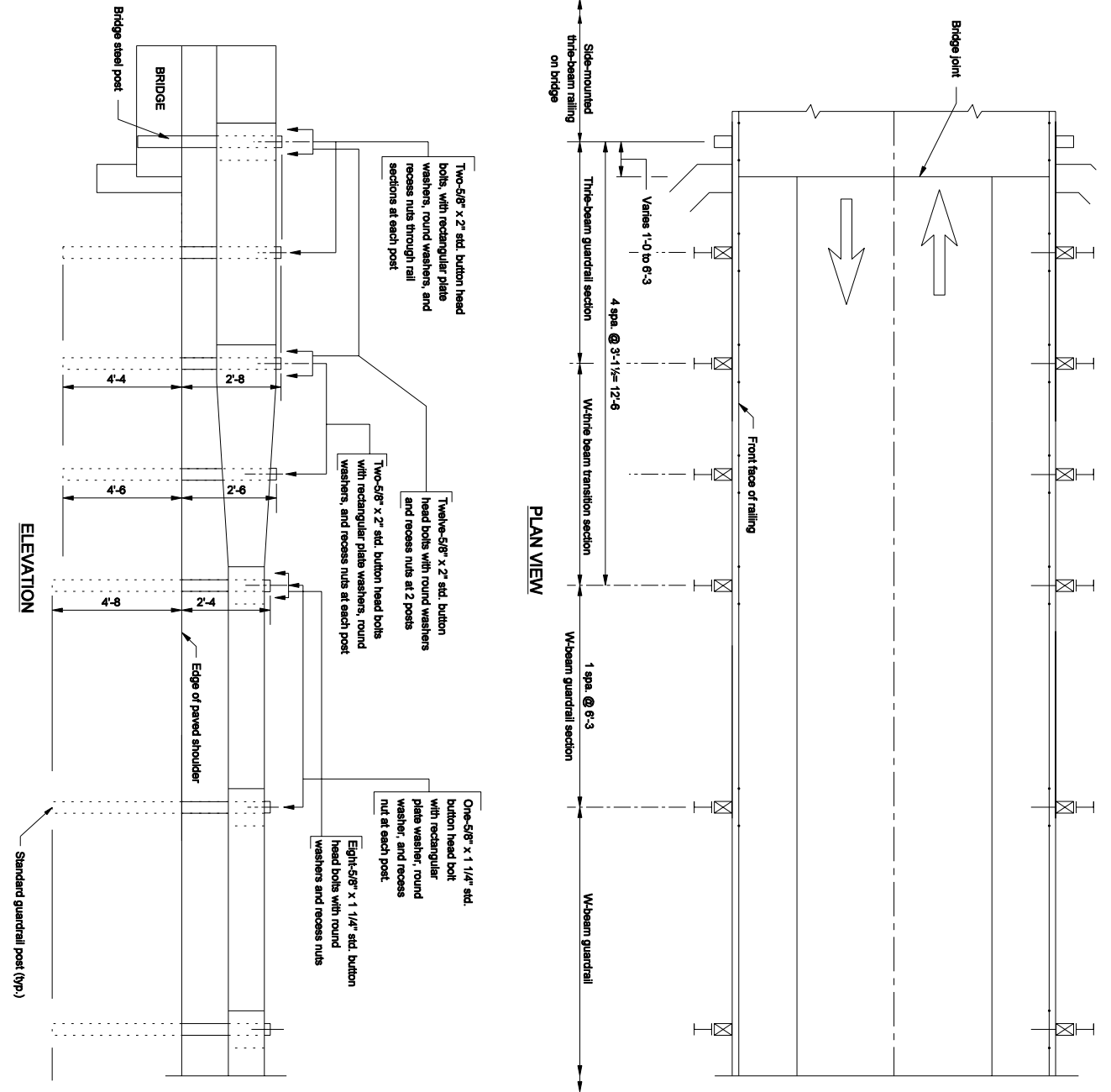
NOTES:

1. See Recurring Plan Detail 706-B-140d sheet 1 for bridge Steel Post Detail.
2. See Standard Drawings 801-TBGC-01 and 801-TBGC-02 for three-beam guardrail components.
3. See Standard Drawings 801-WBGC-01, 801-WBGC-02 and 801-WBGC-03 for W-beam guardrail components.

All dimensions are in mm unless otherwise specified

INDIANA DEPARTMENT OF TRANSPORTATION

GUARDRAIL TRANSITION, TGS-1
(Metric)



- NOTES:**
1. See Recurring Plan Detail E 706-B-1400 sheet 1 for bridge Steel Post Detail.
 2. See Standard Drawings E 601-1TBGC-01 and E 601-1TBGC-02 for three-beam guardrail components.
 3. See Standard Drawings E 601-WBGC-01, E 601-WBGC-02 and E 601-WBGC-03 for W-beam guardrail components.

INDIANA DEPARTMENT OF TRANSPORTATION
GUARDRAIL TRANSITION, TGS-1
(English)