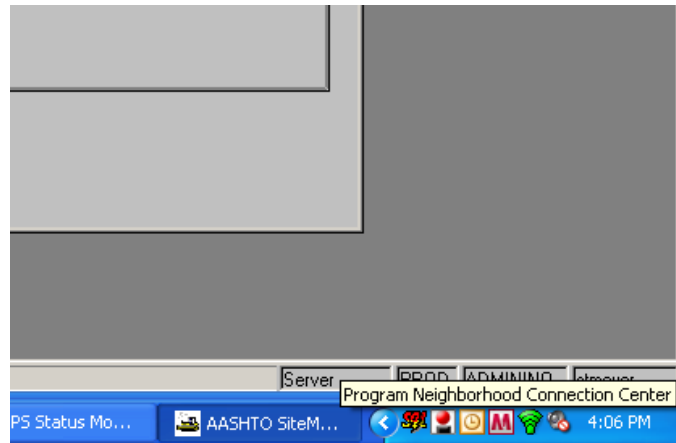


Setting File Security in Citrix

(Accessing the files on your pc)

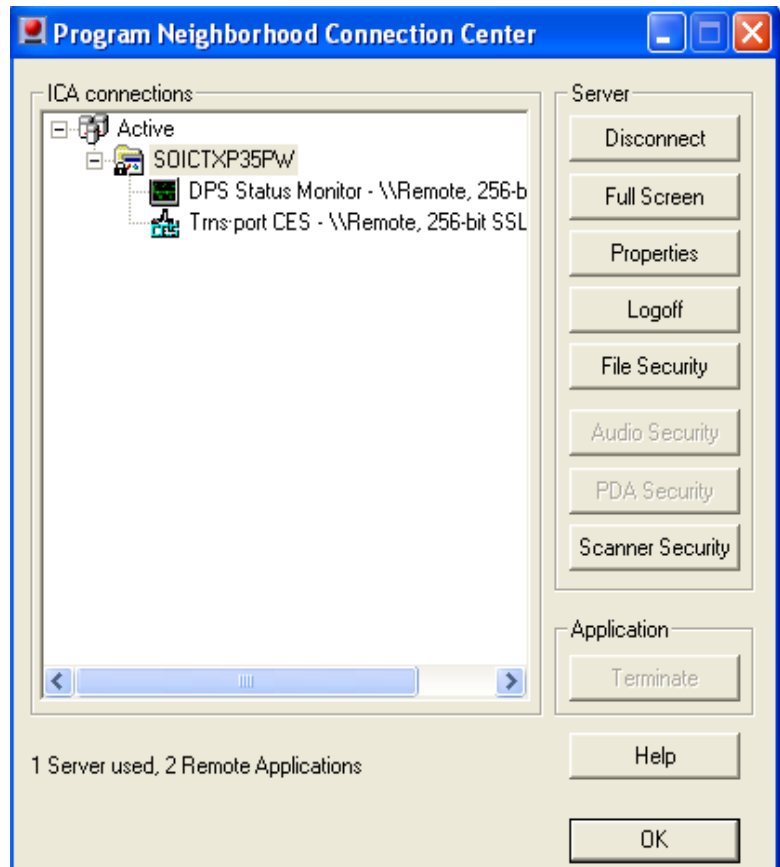
Step 1: While logged into CES via Citrix, right-click on the “Program Neighborhood Connection Center” icon that is located in the bottom right tool tray on your computer screen. It looks like a red ball over a black rectangle.



Step 2: Click on “Open Connection Center”.



Step 3: Click on “File Security” located on the right side of the Program Neighborhood Connection Center window.



Step 4: Make sure the following settings are set:

Access Level = Full Access

Do you want to be asked again? = Never ask me again.

Step 5: click OK



Step 6: Click OK located in the located on the bottom right side of the Program Neighborhood Connection Center window.

Step 7: Close out of CES

Step 8: Close out of Citrix

Step 9: Log back into Citrix

Step 10: Log back into CES

