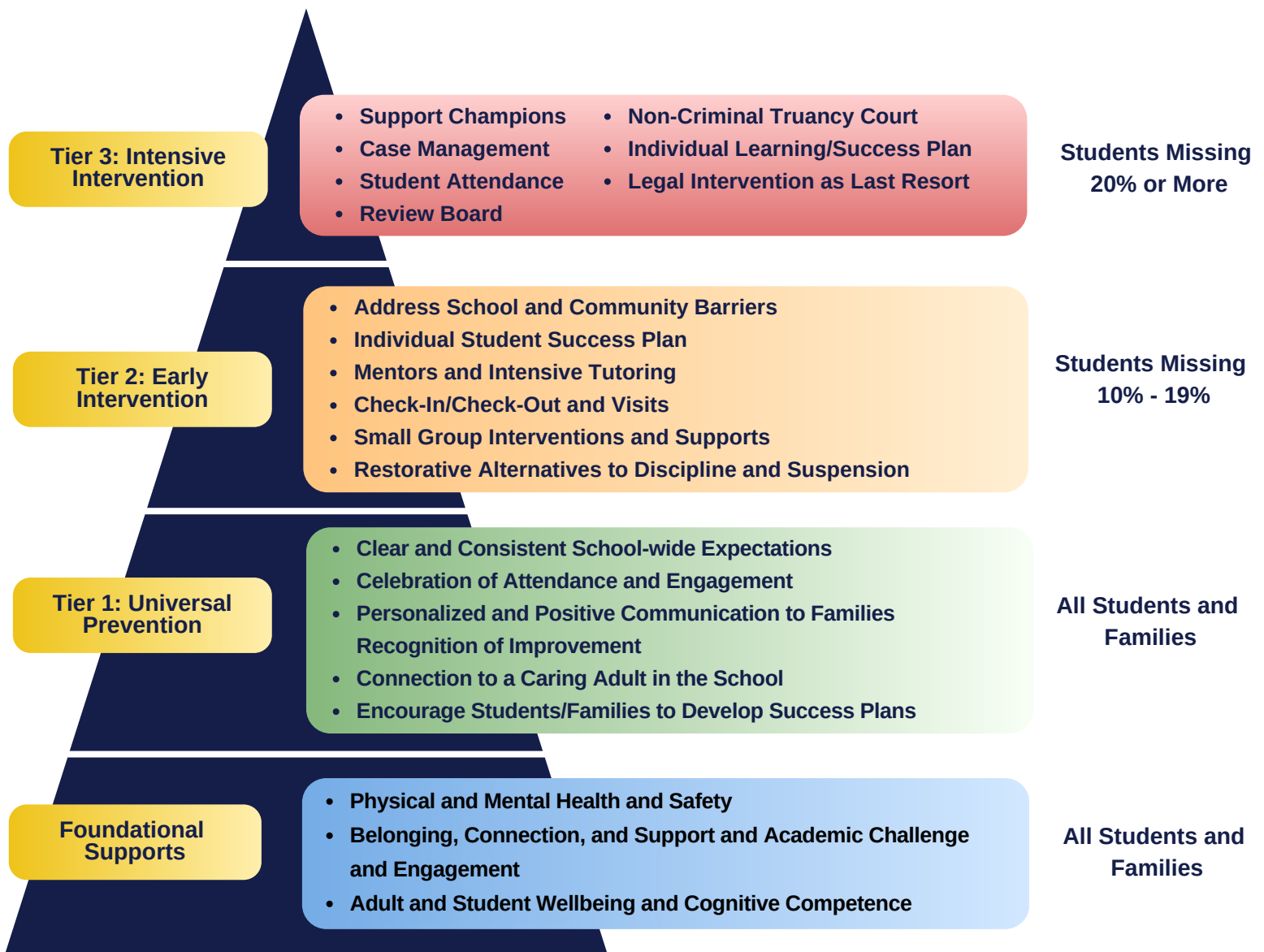




# EDUCATION PROFESSIONAL & TEACHER ABSENTEEISM RESOURCES

According to Attendance Works, students are typically absent from school due to challenges within four categories: barriers to attendance, aversion to school, disengagement from school, and misconceptions about the impact of absences



## IDOE RESOURCES

### DATA & REPORTS

Chronic Absenteeism Rates, Dashboard, Data Center, and Reports

### FOR FAMILIES

Student Success Plans, Facts About Attendance, Parent Handouts

### FOR SCHOOLS & CORPORATIONS

Teacher Resources, Administrator Resources, Root Causes Worksheet