

POPULATION AND ECONOMIC FRAMEWORK

POPULATION

In 1980, the estimated population of the Whitewater River Basin (145,542) comprised 2.7 percent of Indiana's total population (5,490,224). About 52 percent of the basin's population resided in Wayne County, and 31 percent resided in Fayette and Franklin Counties. Fig. 3 shows historic and projected changes in the basin population of these three counties, as well as of the less populous Union County. About 82 percent of the basin's land area in Indiana is occupied by these four counties (table 1).

Forty percent of the basin residents in 1980 lived within the corporate boundaries of Richmond (population: 41,349) in Wayne County and Connersville (population: 17,023) in Fayette County. The declines

in city population since the 1960 census are evident in fig. 4.

App. 2 lists population estimates for county areas within the basin as well as census totals for entire counties. The appendix also lists in-basin population *projections* derived from county projections published by the Indiana State Board of Health (1983).

According to data of the Indiana State Board of Health, the population of Wayne County is expected to continue its decline for the next several decades as Richmond's population continues to decrease. In Franklin and Union Counties, population totals are expected to increase through at least the year 2000, but at different rates. The population of Fayette County

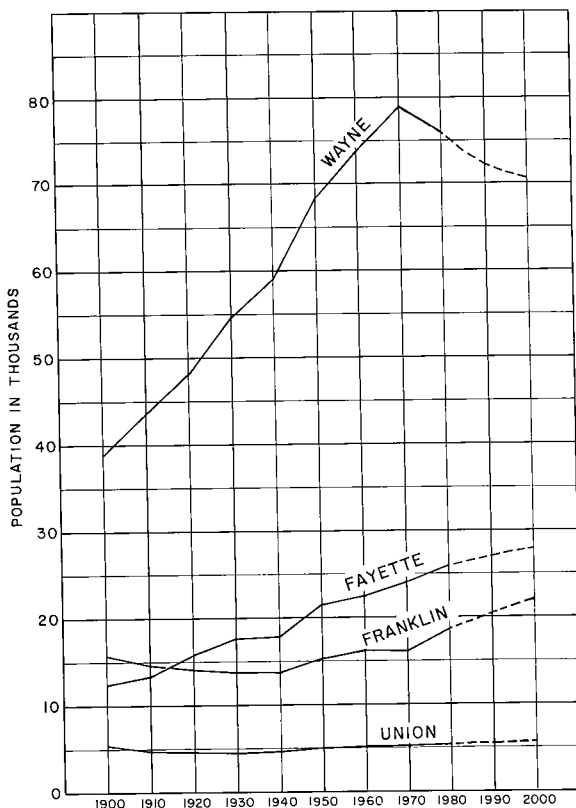


Figure 3. Historic and projected changes in county population

(Projections derived from data of the Indiana State Board of Health, 1983)

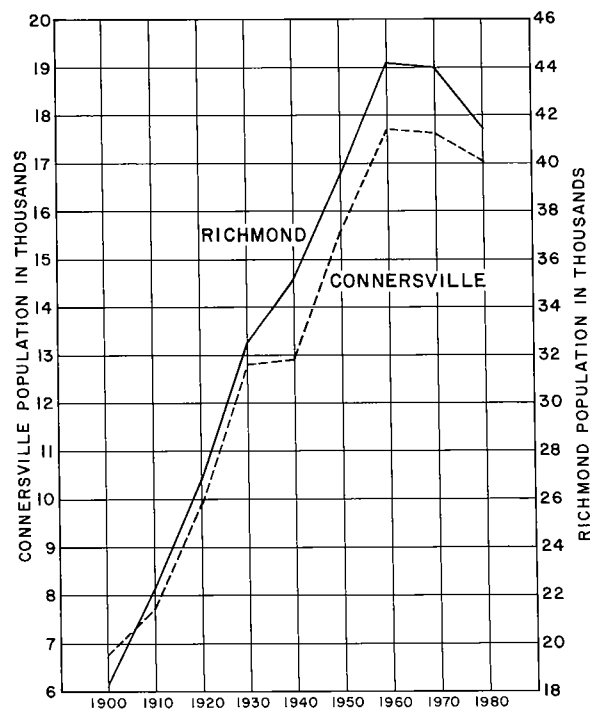


Figure 4. Historic changes in city population

is also expected to increase; however, provisional population *estimates* by the U.S. Census Bureau show a 2.8 percent decrease from 1980-86. In the other six counties listed in table 1, significant differences in projected and estimated countywide population appear to reflect changes in the population of cities lying outside the basin boundary.

ECONOMY¹

Manufacturing, wholesale-retail trade, services, and government constitute the four largest non-farm employment classes in the Whitewater River Basin. In 1983, these four classes accounted for three-fourths of the total basin earnings.

Manufacturing employed 52 percent of Fayette County's non-farm working force in 1982 and accounted for 69 percent of the county's total earnings in 1983. In Wayne County, manufacturing employed 33 percent of the non-farm working force and accounted for 44 percent of the total earnings. Machinery, fabricated metal, and printing-publishing comprised the largest numbers of industries in these two counties. Farm employment exceeded non-farm

employment in Franklin and Union Counties.

Manufacturing, government, and wholesale-retail trade accounted for 72 percent of Franklin County's total earnings; farming accounted for 4 percent. Farm earnings in Union County accounted for 20 percent of the total earnings, compared with 23 percent from government and 21 percent from wholesale-retail trade. Farm earnings in Fayette and Wayne Counties constituted less than one percent of the total county earnings, primarily due to the large amount of income from manufacturing.

Between 1972 and 1982, manufacturing decreased in all four counties, and particularly in Union County. However, at least 40 percent increases in non-farm wage and salary employment during this period have been observed within the following categories: mineral production and agricultural services-fisheries-forestry in Wayne County; finance-related, wholesale trade, and transportation-communication-public utilities in Franklin County; wholesale-retail trade in Union County; and finance-insurance-real estate in Fayette County.

Estimated *per capita income* in 1981 was highest for Wayne County (\$7686) and Fayette County (\$7162), and lowest for Franklin County (\$6934) and Union County (\$6866). Per capita income for these four counties averaged 85 percent of the statewide average. Unemployment in the four-county area averaged nearly 12 percent in 1984.

¹ Economic data, taken from Marcus (1985), are for entire counties, rather than just the portions lying within the Whitewater Basin. Only data for Wayne, Fayette, Union, and Franklin Counties are considered in the discussions of economy and land use.

Table 2. Selected data from 1982 Census of Agriculture

Total area: refers to entire county, hence includes areas lying outside of the Whitewater Basin boundary; acreages from 1982 Census of Agriculture.

Land in farms, total cropland, total pastureland and total woodland: upper figures - 1982 data; lower figures - 1978 data.

County	Total area		Land in farms		Total cropland		Total pastureland ¹		Total woodland	
	Sq mi	Acres	Acres	Percent	Acres	Percent	Acres	Percent	Acres	Percent
Fayette	215	137,875	110,426	80.1	80,950	58.7	21,666	15.7	16,164	11.7
			109,378	79.3	81,409	59.0	22,074	16.0	16,340	11.9
Franklin	385	246,528	169,981	68.9	106,388	43.2	47,914	19.4	38,200	15.5
			158,030	68.2	104,255	42.3	52,442	21.3	35,570	14.4
Union	163	103,993	87,721	84.4	70,356	67.7	11,609	11.2	10,714	10.3
			86,718	83.4	69,063	66.4	13,791	13.3	10,570	10.2
Wayne	404	258,508	200,759	77.7	161,489	62.5	29,039	11.2	19,762	7.6
			204,527	79.1	162,817	63.0	35,837	13.9	22,676	8.8

¹Includes cropland and woodland pastured.

LAND USE

The Whitewater River Basin constitutes 3.7 percent of Indiana's total land area. Cropland, pasture, and forest land are the major land uses in the basin (fig. 5). Table 2 shows selected data for these land use categories as reported in the 1982 Census of Agriculture (U.S. Bureau of Census, 1984a).

About three-fourths of the basin's land area is in farms (table 2). The average size of farms in the basin ranged from 163 acres in Franklin County to 259 acres in Union County (U.S. Bureau of Census, 1984a). Corn for grain, soybeans, and winter wheat were the major crops grown in the four-county area in 1983. Hogs, poultry, and beef cattle were the main livestock

raised.

Cropland covers about two-thirds of the land area of Union and Wayne Counties (table 2). In these counties, forest land generally occurs as small parcels scattered among cropland (fig. 5). However, forested areas are more extensive in southern Fayette and western Franklin Counties, where silty, erosive soils and more rugged topography decrease the availability of prime cropland.

Residential and commercial development is most extensive in and near the cities of Richmond and Connersville (fig. 5). Brookville Lake, which covers 5,260 acres at summer pool elevation, is the largest body of water in the basin. The lake extends from west-central Union County to central Franklin County (fig. 5).

EXPLANATION

URBAN OR BUILT-UP LAND

- 11 Residential
- 12 Commercial and Services
- 13 Industrial
- 14 Transportation, Communications, and Utilities
- 15 Industrial and Commercial Complexes
- 16 Mixed Urban or Built-up Land
- 17 Other Urban or Built-up Land

AGRICULTURAL LAND

- 21 Cropland and Pasture
- 22 Orchards, Groves, Vineyards, Nurseries, and Ornamental Horticultural Areas
- 23 Confined Feeding Operations
- 24 Other Agricultural Land

FOREST LAND

- 41 Deciduous Forest Land
- 42 Evergreen Forest Land
- 43 Mixed Forest Land

WATER

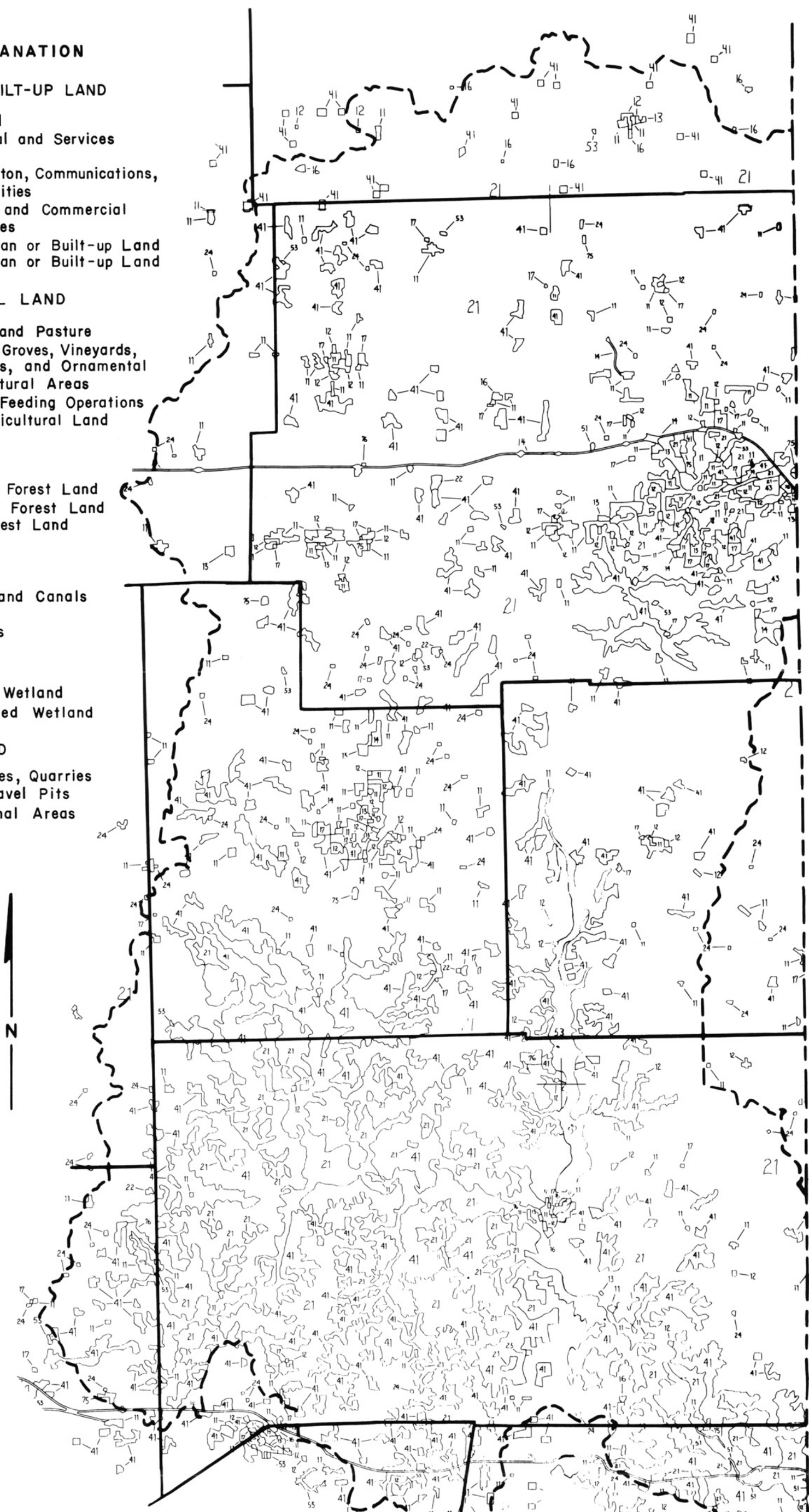
- 51 Streams and Canals
- 52 Lakes
- 53 Reservoirs

WETLAND

- 61 Forested Wetland
- 62 Nonforested Wetland

BARREN LAND

- 75 Strip Mines, Quarries and Gravel Pits
- 76 Transitional Areas



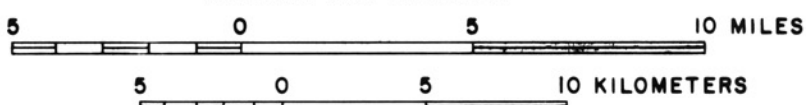
STATE OF INDIANA
DEPARTMENT OF NATURAL RESOURCES
DIVISION OF WATER

WHITEWATER RIVER BASIN

UNITED STATES
DEPARTMENT OF THE INTERIOR
GEOLOGICAL SURVEY
OPEN FILE 81-614-1
LAND USE SURVEY

Drafted by: Burton C. Daniels, Supv.
Connie K. Williams

SCALE AS SHOWN



DRAFTED 1987

Figure 5. Land use