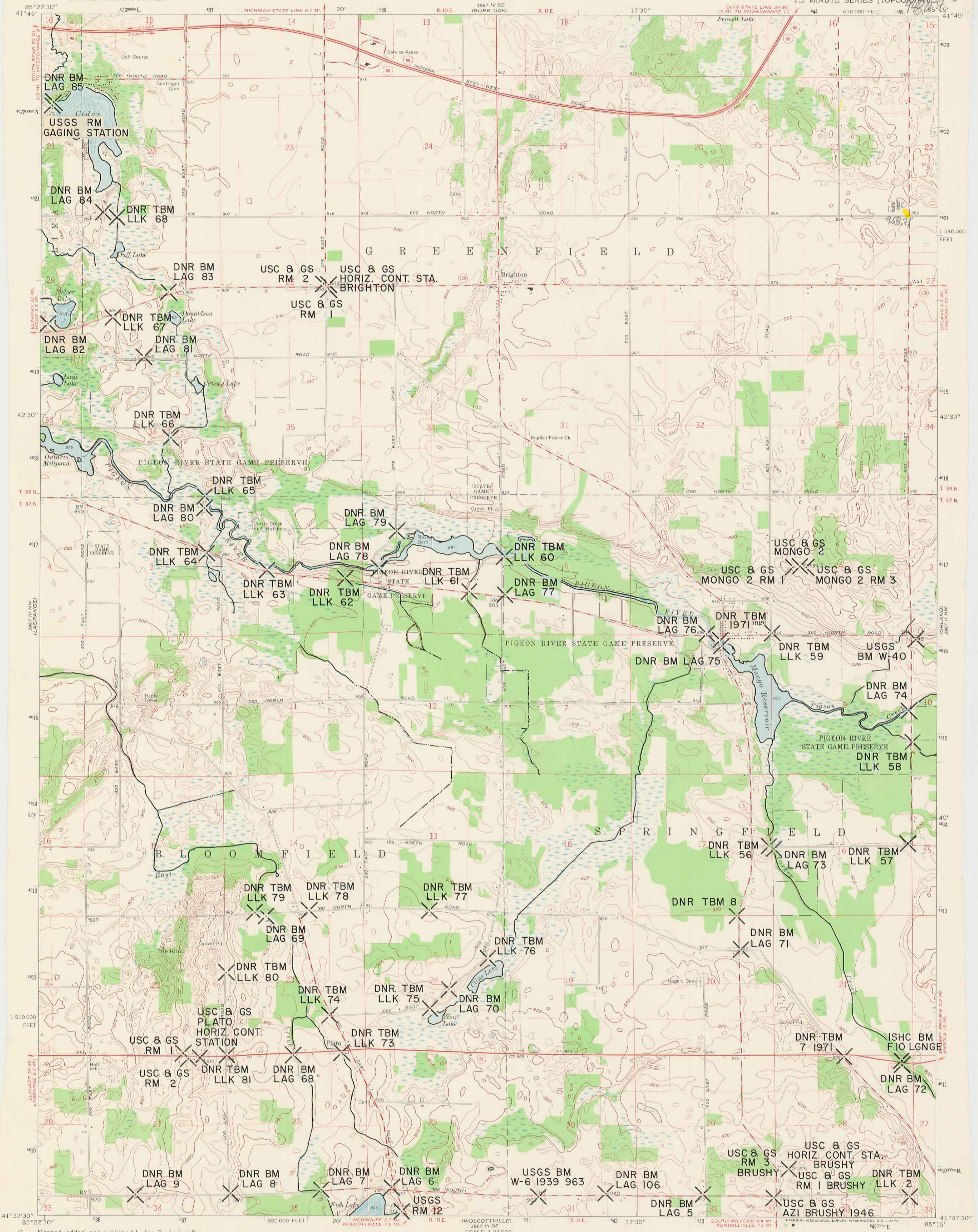


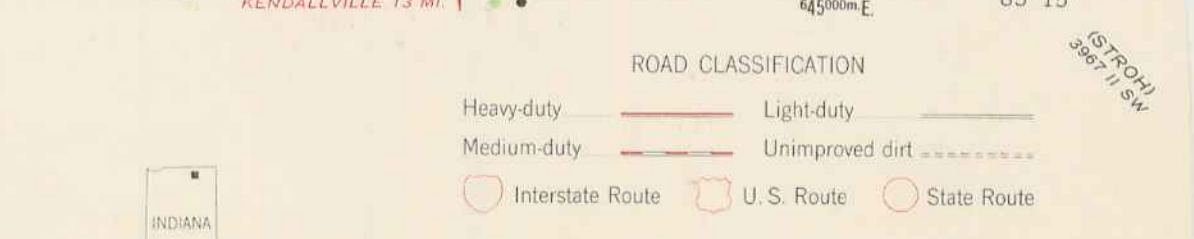
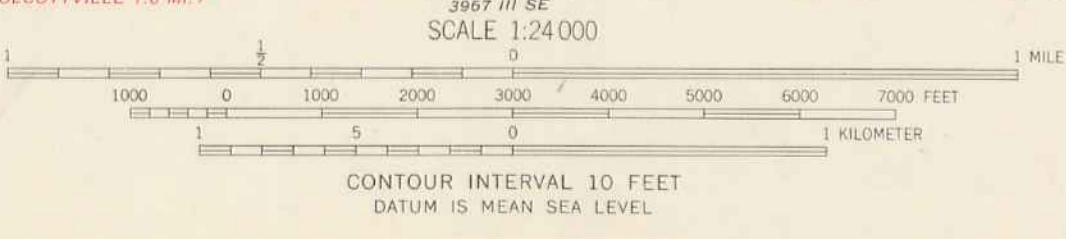
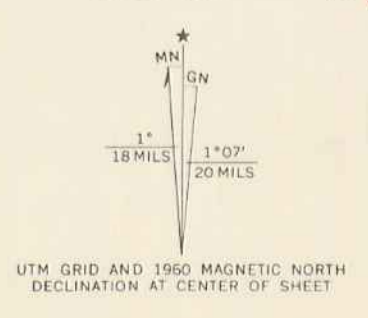
W39 1937 929

UNITED STATES  
DEPARTMENT OF THE INTERIOR  
GEOLOGICAL SURVEY

MONGO QUADRANGLE  
INDIANA-LAGRANGE CO.  
7.5 MINUTE SERIES (TOPOGRAPHIC)



Mapped, edited, and published by the Geological Survey  
Control by USGS and USC&GS  
Topography by planetable surveys 1945. Revised 1960  
Polyconic projection. 1927 North American datum  
10,000-foot grid based on Indiana coordinate system, east zone  
1000-meter Universal Transverse Mercator grid ticks,  
zone 16, shown in blue  
Fine red dashed lines indicate selected fence and field lines where  
generally visible on aerial photographs. This information is unchecked  
Depth curves and soundings compiled from USGS-Indiana  
Department of Conservation lake charts



THIS MAP COMPLIES WITH NATIONAL MAP ACCURACY STANDARDS  
FOR SALE BY U. S. GEOLOGICAL SURVEY, WASHINGTON, D. C. 20242,  
AND INDIANA DEPARTMENT OF NATURAL RESOURCES, INDIANAPOLIS, INDIANA 46204  
A FOLDER DESCRIBING TOPOGRAPHIC MAPS AND SYMBOLS IS AVAILABLE ON REQUEST

QUADRANGLE LOCATION  
INDIANA  
MONGO, IND.  
N4137.5-W8515.7.5  
1960  
AMS 3967 III NE-SERIES V651

REDUCE TO 42.5% OF ORIGINAL