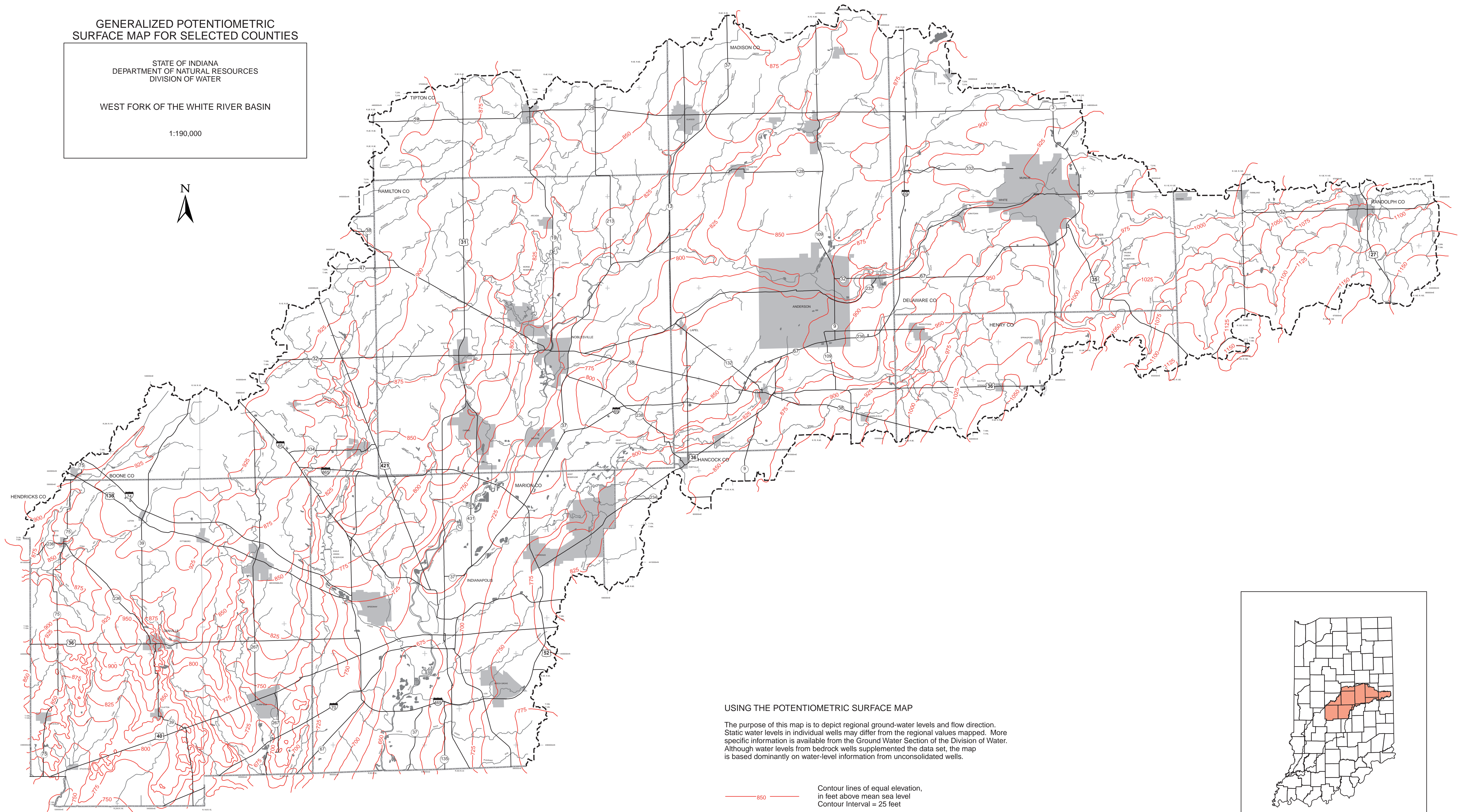


GENERALIZED POTENTIOMETRIC SURFACE MAP FOR SELECTED COUNTIES

STATE OF INDIANA
DEPARTMENT OF NATURAL RESOURCES
DIVISION OF WATER

WEST FORK OF THE WHITE RIVER BASIN

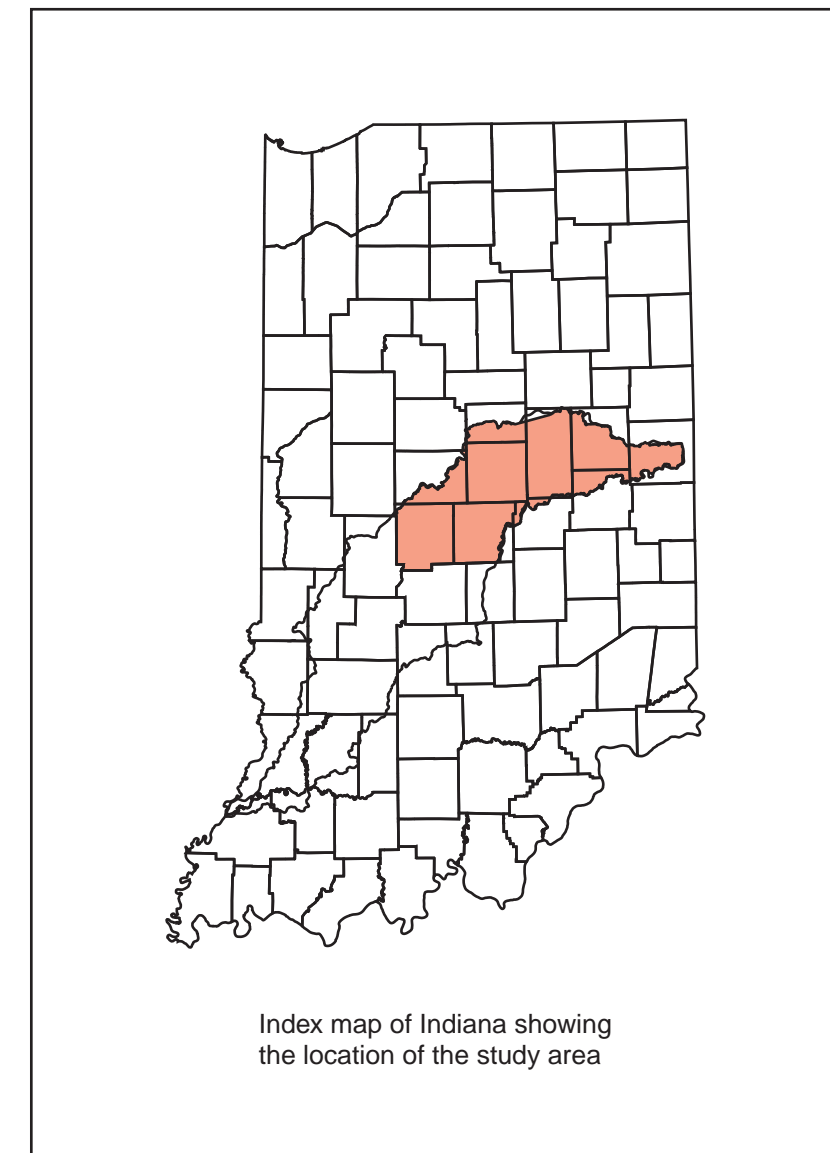
1:190,000



USING THE POTENTIOMETRIC SURFACE MAP

The purpose of this map is to depict regional ground-water levels and flow direction. Static water levels in individual wells may differ from the regional values mapped. More specific information is available from the Ground Water Section of the Division of Water. Although water levels from bedrock wells supplemented the data set, the map is based dominantly on water-level information from unconsolidated wells.

— 850 — Contour lines of equal elevation,
in feet above mean sea level
Contour Interval = 25 feet



Index map of Indiana showing
the location of the study area