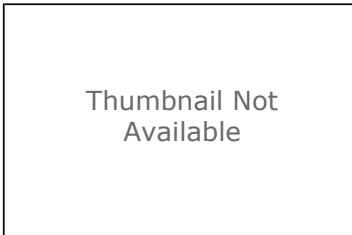


# Potentiometric Surface Map of the Unconsolidated Aquifers of Jennings County, Indiana

## Shapefile



## Tags

Potentiometric surface, static water level, groundwater, water wells, water tables, unconsolidated, Indiana Department of Natural Resources (IDNR), Division of Water (DOW), Jennings County, Indiana, USA

## Summary

Display and/or analyses requiring spatial distribution of potentiometric surface elevations in Jennings County.

## Description

This file is a digital geospatial polyline coverage of the unconsolidated potentiometric surface elevations mapped for Jennings County Indiana.

## Credits

It is requested that the Indiana Department of Natural Resources, Division of Water be cited in any products generated from this data.

## Use limitations

Acknowledgement of the following agency in products derived from these data: Indiana Department of Natural Resources, Division of Water. This map was compiled by staff of the Indiana Department of Natural Resources, Division of Water using data believed to be reasonably accurate. However, a degree of error is inherent in all maps. This product is distributed "as-is" without any warranties of any kind, either expressed or implied. The maps are intended for use only at the published scale. The information on these media is proprietary to the State of Indiana, Indiana Department of Natural Resources, Division of Water. Any copying, adaptation, or distribution of these data without the express written consent of the INDR-DOW is discouraged. It is not recommended that these data be used for purposes other than general estimate of static water level elevations. Site specific conditions may vary considerably from mapped estimates.

## Extent

**West** -85.801646    **East** -85.736394  
**North** 39.032249    **South** 38.827132

## Scale Range

**Maximum (zoomed in)** 1:5,000  
**Minimum (zoomed out)** 1:150,000,000

## ArcGIS Metadata ►

### Topics and Keywords ►

THEMES OR CATEGORIES OF THE RESOURCE    geoscientificInformation

\* CONTENT TYPE    Downloadable Data  
 EXPORT TO FGDC CSDGM XML FORMAT AS RESOURCE DESCRIPTION    No

PLACE KEYWORDS    Jennings County, Indiana, USA

THEME KEYWORDS    unconsolidated

THEME KEYWORDS    static water level

THEME KEYWORDS    groundwater

THEME KEYWORDS    water wells

THEME KEYWORDS    Indiana Department of Natural Resources (IDNR)

THEME KEYWORDS    Division of Water (DOW)

[Hide Topics and Keywords ▲](#)

## Citation ►

TITLE    Potentiometric Surface Map of the Unconsolidated Aquifers of Jennings County, Indiana  
 CREATION DATE    2018-08-31 00:00:00  
 PUBLICATION DATE    2018-12-31 00:00:00

EDITION    1

PRESENTATION FORMATS    \* digital map

### SERIES

NAME    Unconsolidated Potentiometric Surface Map  
 ISSUE    PSM 85-A

### OTHER CITATION DETAILS

This map was compiled from multiple unpublished work maps based on USGS quadrangles at 1:24,000 scale: Azalia, Butlerville, Chestnut Ridge, Crothersville, Deputy, Elizabethtown, Grammer, Hayden, Holton, Millhousen, North Vernon, San Jacinto, Vernon, Volga, and Westport.

[Hide Citation ▲](#)

## Citation Contacts ►

### RESPONSIBLE PARTY

INDIVIDUAL'S NAME    Kristiana E. Cox  
 ORGANIZATION'S NAME    IDNR Division of Water, Resource Assessment Section  
 CONTACT'S ROLE    originator

### RESPONSIBLE PARTY

ORGANIZATION'S NAME    Indiana Department of Natural Resources, Division of Water  
 CONTACT'S ROLE    publisher

### CONTACT INFORMATION ►

#### ADDRESS

##### TYPE

DELIVERY POINT    Indianapolis, Indiana, USA

[Hide Contact information ▲](#)

[Hide Citation Contacts ▲](#)

## Resource Details ►

DATASET LANGUAGES    \* English (UNITED STATES)  
 DATASET CHARACTER SET    utf8 - 8 bit UCS Transfer Format

STATUS    completed

SPATIAL REPRESENTATION TYPE    \* vector

\* PROCESSING ENVIRONMENT Version 6.2 (Build 9200) ; Esri ArcGIS 10.5.1.7333

#### CREDITS

It is requested that the Indiana Department of Natural Resources, Division of Water be cited in any products generated from this data.

#### ARCGIS ITEM PROPERTIES

\* NAME UNC\_PSM\_Jennings\_Co\_IN  
 \* SIZE 0.038  
 \* LOCATION file:///\\STATE.IN.US\\FILE1\\DNR\\SHARED\\DNR1\\DOW\\COMMON\\RA\_FILES\_ONLINE\\85\_Jennings\\85\_Jennings\_PSM\_Shapefiles\\UNC\_PSM\_Jennings\_Co\_IN.shp  
 \* ACCESS PROTOCOL Local Area Network

[Hide Resource Details ▲](#)

## Extents ►

#### EXTENT

##### GEOGRAPHIC EXTENT

##### BOUNDING RECTANGLE

EXTENT TYPE Extent used for searching

\* WEST LONGITUDE -85.801646  
 \* EAST LONGITUDE -85.736394  
 \* NORTH LATITUDE 39.032249  
 \* SOUTH LATITUDE 38.827132  
 \* EXTENT CONTAINS THE RESOURCE Yes

#### EXTENT IN THE ITEM'S COORDINATE SYSTEM

\* WEST LONGITUDE 604020.294225  
 \* EAST LONGITUDE 609371.038264  
 \* SOUTH LATITUDE 4298347.522430  
 \* NORTH LATITUDE 4321042.323195  
 \* EXTENT CONTAINS THE RESOURCE Yes

[Hide Extents ▲](#)

## Resource Points of Contact ►

#### POINT OF CONTACT

INDIVIDUAL'S NAME Kristiana E. Cox  
 ORGANIZATION'S NAME Indiana Department of Natural Resources, Division of Water  
 CONTACT'S POSITION Resource Assessment Section  
 CONTACT'S ROLE originator

#### CONTACT INFORMATION ►

##### PHONE

VOICE 317-232-4160  
 FAX 317-233-4579

##### ADDRESS

TYPE  
 DELIVERY POINT 402 W. Washington Street W264  
 CITY Indianapolis  
 ADMINISTRATIVE AREA Indiana  
 POSTAL CODE 46204  
 E-MAIL ADDRESS kcox3@dnr.IN.gov

##### HOURS OF SERVICE

8:15am - 4:15pm M-F except Government Holidays

[Hide Contact information ▲](#)

[Hide Resource Points of Contact ▲](#)

## Resource Maintenance ►

## RESOURCE MAINTENANCE

UPDATE FREQUENCY not planned

[Hide Resource Maintenance ▲](#)**Resource Constraints ►**

## LEGAL CONSTRAINTS

ACCESS CONSTRAINTS other restrictions

## OTHER CONSTRAINTS

The Indiana Department of Natural Resources, Division of Water has compiled this data set using data believed to be reasonably accurate. However, the Division makes no representation as to the accuracy, completeness, or usefulness of the data or data set. A degree of error is inherent in all maps. This map is intended for use only at the published scale. Reference to any specific commercial product, process, or service does not constitute an endorsement, recommendation, or favoring by the Division. Copyright 2018, Indiana Department of Natural Resources, Division of Water All Rights Reserved. Any copying, adaptation, or distribution of these data without the express written consent of the Indiana Department of Natural Resources, Division of Water is discouraged.

## OTHER CONSTRAINTS

This file is available to anyone, but access may be contingent on written request, specific terms relevant to the agency or person making the request, and/or current freedom of information statutes in the State of Indiana.

## CONSTRAINTS

## LIMITATIONS OF USE

Acknowledgement of the following agency in products derived from these data: Indiana Department of Natural Resources, Division of Water. This map was compiled by staff of the Indiana Department of Natural Resources, Division of Water using data believed to be reasonably accurate. However, a degree of error is inherent in all maps. This product is distributed "as-is" without any warranties of any kind, either expressed or implied. The maps are intended for use only at the published scale. The information on these media is proprietary to the State of Indiana, Indiana Department of Natural Resources, Division of Water. Any copying, adaptation, or distribution of these data without the express written consent of the INDR-DOW is discouraged. It is not recommended that these data be used for purposes other than general estimate of static water level elevations. Site specific conditions may vary considerably from mapped estimates.

[Hide Resource Constraints ▲](#)**Spatial Reference ►**

## ARCGIS COORDINATE SYSTEM

\* TYPE Projected

\* GEOGRAPHIC COORDINATE REFERENCE GCS\_North\_American\_1983

\* PROJECTION NAD\_1983\_UTM\_Zone\_16N

\* COORDINATE REFERENCE DETAILS

## PROJECTED COORDINATE SYSTEM

WELL-KNOWN IDENTIFIER 26916

X ORIGIN -5120900

Y ORIGIN -9998100

XY SCALE 450445547.3910538

Z ORIGIN -100000

Z SCALE 10000

M ORIGIN -100000

M SCALE 10000

XY TOLERANCE 0.001

Z TOLERANCE 0.001

M TOLERANCE 0.001

HIGH PRECISION true

LATEST WELL-KNOWN IDENTIFIER 26916

WELL-KNOWN TEXT PROJCS["NAD\_1983\_UTM\_Zone\_16N",GEOGCS["GCS\_North\_American\_1983",DATUM["D\_North\_American\_1983",SPHEROID["GRS\_1980",6378137.0,298.257222101]],PRIMEM["Greenwich",0.0],UNIT["Degree",0.0174532925199433]],PROJECTION["Transverse\_Mercator"],PARAMETER["False\_Easting",500000.0],PARAMETER["False\_Northing",0.0],PARAMETER["Central\_Meridian",-87.0],PARAMETER["Scale\_Factor",0.9996],PARAMETER["Latitude\_Of\_Origin",0.0],UNIT["Meter",1.0],AUTHORITY["EPSG",26916]]

## REFERENCE SYSTEM IDENTIFIER

\* VALUE 26916  
 \* CODESPACE EPSG  
 \* VERSION 6.13(3.0.1)

[Hide Spatial Reference ▲](#)

## Spatial Data Properties ►

## VECTOR ►

\* LEVEL OF TOPOLOGY FOR THIS DATASET geometry only

## GEOMETRIC OBJECTS

FEATURE CLASS NAME UNC\_PSM\_Jennings\_Co\_IN  
 \* OBJECT TYPE composite  
 \* OBJECT COUNT 7

[Hide Vector ▲](#)

## ARCGIS FEATURE CLASS PROPERTIES ►

FEATURE CLASS NAME UNC\_PSM\_Jennings\_Co\_IN  
 \* FEATURE TYPE Simple  
 \* GEOMETRY TYPE Polyline  
 \* HAS TOPOLOGY FALSE  
 \* FEATURE COUNT 7  
 \* SPATIAL INDEX TRUE  
 \* LINEAR REFERENCING FALSE

[Hide ArcGIS Feature Class Properties ▲](#)

[Hide Spatial Data Properties ▲](#)

## Data Quality ►

## SCOPE OF QUALITY INFORMATION ►

RESOURCE LEVEL dataset

[Hide Scope of quality information ▲](#)

## DATA QUALITY REPORT - COMPLETENESS OMISSION ►

## MEASURE DESCRIPTION

In conducting the mapping, the author(s) evaluated hundreds of water well records, especially those having relatively complete information on well location, static water level, well depth, ground elevation, and lithology. There were areas in the county with sparse information because of lack of well records or incomplete records.

[Hide Data quality report - Completeness omission ▲](#)

## DATA QUALITY REPORT - QUANTITATIVE ATTRIBUTE ACCURACY ►

## MEASURE DESCRIPTION

The mapping was conducted after a thorough documentation of well locations and water well record details.

[Hide Data quality report - Quantitative attribute accuracy ▲](#)

## DATA QUALITY REPORT - ABSOLUTE EXTERNAL POSITIONAL ACCURACY ►

## MEASURE DESCRIPTION

The locations of many wells were field checked and the locations posted on 7.5 minute topographic maps. Visual confirmation of wells was not always possible. Many locations were based only on the street address,

driving directions, or other location information provided on the well record.

[Hide Data quality report - Absolute external positional accuracy ▲](#)

[Hide Data Quality ▲](#)

## Lineage ►

### PROCESS STEP ►

WHEN THE PROCESS OCCURRED 2018-08-01 00:00:00

#### DESCRIPTION

Data were selected by careful evaluation of water well records to determine if the wells were field located and if they contained complete and reasonable information.

[Hide Process step ▲](#)

### PROCESS STEP ►

WHEN THE PROCESS OCCURRED 2018-08-01 00:00:00

#### DESCRIPTION

After selection of water well records was complete, specific well data and other maps and reports were considered in the mapping process. For example, ground elevation, static water level, well depth, aquifer top and bottom elevation and lithology were obtained from well records. Other maps and reports included regional potentiometric surface elevations, hydrogeologic settings, groundwater availability, bedrock topography, and surface topography.

[Hide Process step ▲](#)

### SOURCE DATA ►

#### DESCRIPTION

Water well records from the IDNR-DOW well record database; USGS topography maps; various consultant geotechnical reports

### SOURCE CITATION ►

TITLE Unconsolidated Potentiometric Surface Map Jennings County, Indiana

CREATION DATE 2018-08-31 00:00:00

PUBLICATION DATE 2018-12-31 00:00:00

EDITION 1

#### SERIES

NAME Unconsolidated Potentiometric Surface Map

ISSUE PSM 84-A

#### RESPONSIBLE PARTY

INDIVIDUAL'S NAME Kristiana E. Cox

ORGANIZATION'S NAME IDNR Division of Water, Resource Assessment Section

CONTACT'S ROLE originator

#### RESPONSIBLE PARTY

ORGANIZATION'S NAME Indiana Department of Natural Resources, Division of Water

CONTACT'S ROLE publisher

#### CONTACT INFORMATION ►

##### ADDRESS

##### TYPE

DELIVERY POINT Indianapolis, Indiana, USA

[Hide Contact information ▲](#)

[Hide Source citation ▲](#)[Hide Source data ▲](#)[Hide Lineage ▲](#)

## Distribution ►

### DISTRIBUTOR ►

#### CONTACT INFORMATION

INDIVIDUAL'S NAME Kristiana E. Cox

ORGANIZATION'S NAME Indiana Department of Natural Resources, Division of Water

CONTACT'S POSITION Resource Assessment Section

CONTACT'S ROLE distributor

#### CONTACT INFORMATION ►

##### PHONE

VOICE 317-323-4160

FAX 317-233-4579

##### ADDRESS

TYPE both

DELIVERY POINT 402 W. Washington Street W264

CITY Indianapolis

ADMINISTRATIVE AREA Indiana

POSTAL CODE 46204

COUNTRY US

##### HOURS OF SERVICE

8:15am - 4:15pm M-F except Government Holidays

[Hide Contact information ▲](#)[Hide Distributor ▲](#)

### DISTRIBUTION FORMAT

NAME Shapefile

### TRANSFER OPTIONS

\* TRANSFER SIZE 0.038

### ONLINE SOURCE

LOCATION <http://www.in.gov/dnr/water/7256.htm>[Hide Distribution ▲](#)

## Fields ►

### DETAILS FOR OBJECT UNC\_PSM\_Jennings\_Co\_IN ►

\* TYPE Feature Class

\* ROW COUNT 7

### FIELD FID ►

ALIAS FID

DATA TYPE OID

WIDTH 4

\* PRECISION 0

\* SCALE 0

#### FIELD DESCRIPTION

Internal feature number.

#### DESCRIPTION SOURCE

Esri

## DESCRIPTION OF VALUES

Sequential unique whole numbers that are automatically generated.

[Hide Field FID ▲](#)

## FIELD Shape ►

ALIAS Shape  
DATA TYPE Geometry

WIDTH 0

\* PRECISION 0

\* SCALE 0

## FIELD DESCRIPTION

Feature Geometry

## DESCRIPTION SOURCE

Esri

## DESCRIPTION OF VALUES

Coordinates defining the features.

[Hide Field Shape ▲](#)

## FIELD Static\_E ►

\* ALIAS Static\_E

\* DATA TYPE String

\* WIDTH 50

\* PRECISION 0

\* SCALE 0

## FIELD DESCRIPTION

Unconsolidated contour lines of static water levels.

[Hide Field Static\\_E ▲](#)[Hide Details for object UNC\\_PSM\\_Jennings\\_Co\\_IN ▲](#)[Hide Fields ▲](#)**Metadata Details ►**

METADATA LANGUAGE English (UNITED STATES)

METADATA CHARACTER SET utf8 - 8 bit UCS Transfer Format

SCOPE OF THE DATA DESCRIBED BY THE METADATA dataset

SCOPE NAME \* dataset

\* LAST UPDATE 2019-01-04

## ARCGIS METADATA PROPERTIES

METADATA FORMAT ArcGIS 1.0

STANDARD OR PROFILE USED TO EDIT METADATA FGDC

METADATA STYLE FGDC CSDGM Metadata

CREATED IN ARCGIS FOR THE ITEM 2018-12-19 14:47:43

LAST MODIFIED IN ARCGIS FOR THE ITEM 2019-01-04 12:41:18

## AUTOMATIC UPDATES

HAVE BEEN PERFORMED Yes

LAST UPDATE 2019-01-04 12:41:01

## ITEM LOCATION HISTORY

ITEM COPIED OR MOVED 2018-12-19 14:47:43

FROM S:\Jennings\2\_Shapefiles\UNC\_PSM\_Jennings\_Co\_IN

TO \\state.in.us\file1\dnr\shared\dnr1

\dow\common\RA\_FILES\_ONLINE\85\_Jennings\85\_Jennings\_PSM\_Shapefiles\UNC\_PSM\_Jennings\_Co\_INCopy

[Hide Metadata Details ▲](#)**Metadata Contacts ►**

## METADATA CONTACT

INDIVIDUAL'S NAME Kristiana E. Cox

ORGANIZATION'S NAME Indiana Department of Natural Resources, Division of Water

CONTACT'S ROLE point of contact

## CONTACT INFORMATION ►

## PHONE

VOICE 317-232-4160

FAX 317-233-4579

## ADDRESS

TYPE both

DELIVERY POINT 402 W. Washington Street W264

CITY Indianapolis

ADMINISTRATIVE AREA Indiana

POSTAL CODE 46204

COUNTRY US

E-MAIL ADDRESS kcox3@dnr.IN.gov

## HOURS OF SERVICE

8:15am - 4:15pm M-F except Government Holidays

[Hide Contact information ▲](#)[Hide Metadata Contacts ▲](#)**Metadata Maintenance ►**

## MAINTENANCE

UPDATE FREQUENCY not planned

[Hide Metadata Maintenance ▲](#)**Metadata Constraints ►**

## LEGAL CONSTRAINTS

ACCESS CONSTRAINTS other restrictions

## OTHER CONSTRAINTS

Access constraints: This metadata file is intended to accompany the subject geospatial set. This file may be updated, and the most recent version is available by contacting the IDNR Division of Water.

[Hide Metadata Constraints ▲](#)**FGDC Metadata (read-only) ▼**