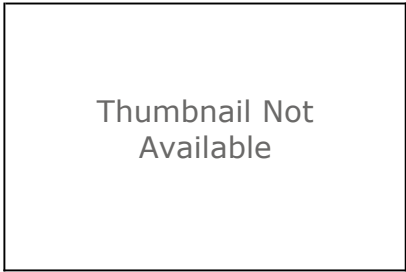


Potentiometric Surface Map of the Bedrock Aquifers of Hendricks County, Indiana

Shapefile



Tags

Potentiometric surface, static water level, groundwater, water wells, water tables, bedrock, Indiana Department of Natural Resources (IDNR), Division of Water (DOW), Hendricks County, Indiana, USA

Summary

Display and/or analyses requiring spatial distribution of potentiometric surface elevations in Hendricks County.

Description

This file is a digital geospatial polyline coverage of the bedrock potentiometric surface elevations mapped for Hendricks County Indiana.

Credits

It is requested that the Indiana Department of Natural Resources, Division of Water be cited in any products generated from this data.

Use limitations

Acknowledgement of the following agency in products derived from these data: Indiana Department of Natural Resources, Division of Water. This map was compiled by staff of the Indiana Department of Natural Resources, Division of Water using data believed to be reasonably accurate. However, a degree of error is inherent in all maps. This product is distributed "as-is" without warranties of any kind, either expressed or implied. The maps are intended for use only at the published scale. The information on these media is proprietary to the State of Indiana, Indiana Department of Natural Resources, Division of Water. Any copying, adaptation, or distribution of these data without the express written consent of IDNR-DOW is discouraged. It is not recommended that these data be used for purposes other than general estimate of static water level elevations. Site specific conditions may vary considerably from mapped estimates.

Extent

West	-86.696597	East	-86.323880
North	39.922837	South	39.599542

Scale Range

Maximum (zoomed in)	1:5,000
Minimum (zoomed out)	1:150,000,000

ArcGIS Metadata ►

Topics and Keywords ►

* CONTENT TYPE Downloadable Data
EXPORT TO FGDC CSDGM XML FORMAT AS RESOURCE DESCRIPTION No

PLACE KEYWORDS Hendricks County, Indiana, USA

THEME KEYWORDS bedrock

THEME KEYWORDS static water level

THEME KEYWORDS groundwater

THEME KEYWORDS water wells

THEME KEYWORDS Indiana Department of Natural Resources (IDNR)

THEME KEYWORDS Division of Water (DOW)

[Hide Topics and Keywords ▲](#)

Citation ►

TITLE Potentiometric Surface Map of the Bedrock Aquifers of Hendricks County, Indiana

PUBLICATION DATE 2015-12-23 00:00:00

CREATION DATE 2015-08-03 00:00:00

EDITION 1

PRESENTATION FORMATS digital map

SERIES

NAME Bedrock Potentiometric Surface Map

ISSUE PSM 15-B

OTHER CITATION DETAILS

This map was compiled from multiple unpublished work maps based on USGS quadrangles at 1:24,000 scale: Bridgeport, Brownsburg, Clayton, Clermont, Coatsville, Danville, Eminence, Fayette, Hall, Lizton, Mooresville West, New Ross, North Salem, Plainfield, and Zionsville.

[Hide Citation ▲](#)

Citation Contacts ►

RESPONSIBLE PARTY

ORGANIZATION'S NAME Robert K. Schmidt, IDNR Division of Water, Resource Assessment Section

CONTACT'S ROLE originator

RESPONSIBLE PARTY

ORGANIZATION'S NAME Indiana Department of Natural Resources, Division of Water

CONTACT'S ROLE publisher

CONTACT INFORMATION ►

ADDRESS

TYPE

DELIVERY POINT Indianapolis, Indiana, USA

[Hide Contact information ▲](#)

[Hide Citation Contacts ▲](#)

Resource Details ▶

DATASET LANGUAGES Undetermined ()
DATASET CHARACTER SET utf8 - 8 bit UCS Transfer Format

STATUS completed
SPATIAL REPRESENTATION TYPE vector

* PROCESSING ENVIRONMENT Microsoft Windows 7 Version 6.1 (Build 7601) Service Pack 1; Esri ArcGIS 10.3.1.4959

CREDITS
It is requested that the Indiana Department of Natural Resources, Division of Water be cited in any products generated from this data.

ARCGIS ITEM PROPERTIES
* NAME BED_PSM_Hendricks_Co_IN
* SIZE 0.707
* LOCATION file://\\iotisip01pa\dnrgis\$\!Potentiometric\Hendricks Revised 2015\!_Web_Products\Shape Files\BED_PSM_Hendricks_Co_IN.shp
* ACCESS PROTOCOL Local Area Network

[Hide Resource Details ▲](#)

Extents ▶

EXTENT
GEOGRAPHIC EXTENT
BOUNDING RECTANGLE
EXTENT TYPE Extent used for searching
* WEST LONGITUDE -86.696597
* EAST LONGITUDE -86.323880
* NORTH LATITUDE 39.922837
* SOUTH LATITUDE 39.599542
EXTENT CONTAINS THE RESOURCE Yes

EXTENT IN THE ITEM'S COORDINATE SYSTEM
* WEST LONGITUDE 526048.460014
* EAST LONGITUDE 557779.881816
* SOUTH LATITUDE 4383528.084575
* NORTH LATITUDE 4419237.364649
* EXTENT CONTAINS THE RESOURCE Yes

[Hide Extents ▲](#)

Resource Points of Contact ▶

POINT OF CONTACT
INDIVIDUAL'S NAME Robert K. Schmidt
ORGANIZATION'S NAME Indiana Department of Natural Resources, Division of Water
CONTACT'S POSITION Resource Assessment Section
CONTACT'S ROLE point of contact

CONTACT INFORMATION ▶
PHONE
VOICE 317-232-4160
FAX 317-233-4579

ADDRESS
TYPE
DELIVERY POINT 402 W. Washington Street W264
CITY Indianapolis

ADMINISTRATIVE AREA Indiana
POSTAL CODE 46204
COUNTRY US
E-MAIL ADDRESS rschmidt@dnr.IN.gov

HOURS OF SERVICE
8:15am - 4:15pm M-F except Government Holidays

[Hide Contact information ▲](#)

[Hide Resource Points of Contact ▲](#)

Resource Maintenance ►

RESOURCE MAINTENANCE
UPDATE FREQUENCY not planned

[Hide Resource Maintenance ▲](#)

Resource Constraints ►

LEGAL CONSTRAINTS
ACCESS CONSTRAINTS other restrictions

OTHER CONSTRAINTS

The Indiana Department of Natural Resources, Division of Water has compiled this data set using data believed to be reasonably accurate. However, the Division makes no representation as to the accuracy, completeness, or usefulness of the data or data set. A degree of error is inherent in all maps. This map is intended for use only at the published scale. Reference to any specific commercial product, process, or service does not constitute an endorsement, recommendation, or favoring by the Division. Copyright 2015, Indiana Department of Natural Resources, Division of Water All Rights Reserved Any copying, adaptation, or distribution of these data without the express written consent of the Indiana Department of Natural Resources, Division of Water is discouraged.

OTHER CONSTRAINTS

This file is available to anyone, but access may be contingent on written request, specific terms relevant to the agency or person making the request, and/or current freedom of information statutes in the State of Indiana.

CONSTRAINTS

LIMITATIONS OF USE

Acknowledgement of the following agency in products derived from these data: Indiana Department of Natural Resources, Division of Water. This map was compiled by staff of the Indiana Department of Natural Resources, Division of Water using data believed to be reasonably accurate. However, a degree of error is inherent in all maps. This product is distributed "as-is" without warranties of any kind, either expressed or implied. The maps are intended for use only at the published scale. The information on these media is proprietary to the State of Indiana, Indiana Department of Natural Resources, Division of Water. Any copying, adaptation, or distribution of these data without the express written consent of IDNR-DOW is discouraged. It is not recommended that these data be used for purposes other than general estimate of static water level elevations. Site specific conditions may vary considerably from mapped estimates.

[Hide Resource Constraints ▲](#)

Spatial Reference ►

ARCGIS COORDINATE SYSTEM

- * TYPE Projected
- * GEOGRAPHIC COORDINATE REFERENCE GCS_North_American_1983
- * PROJECTION NAD_1983_UTM_Zone_16N
- * COORDINATE REFERENCE DETAILS
 - PROJECTED COORDINATE SYSTEM
 - WELL-KNOWN IDENTIFIER 26916

X ORIGIN -5120900
Y ORIGIN -9998100
XY SCALE 450445547.3910538
Z ORIGIN -100000
Z SCALE 10000
M ORIGIN -100000
M SCALE 10000
XY TOLERANCE 0.001
Z TOLERANCE 0.001
M TOLERANCE 0.001
HIGH PRECISION true
LATEST WELL-KNOWN IDENTIFIER 26916
WELL-KNOWN TEXT PROJCS["NAD_1983_UTM_Zone_16N",GEOGCS["GCS_North_American_1983",DATUM["D_North_American_1983",SPHEROID["GRS_1980",6378137.0,298.257222101]],PRIMEM["Greenwich",0.0],UNIT["Degree",0.0174532925199433]],PROJECTION["Transverse_Mercator"],PARAMETER["False_Easting",500000.0],PARAMETER["False_Northing",0.0],PARAMETER["Central_Meridian",-87.0],PARAMETER["Scale_Factor",0.9996],PARAMETER["Latitude_Of_Origin",0.0],UNIT["Meter",1.0],AUTHORITY["EPSG",26916]]

REFERENCE SYSTEM IDENTIFIER

VALUE 26916
* CODESPACE EPSG
* VERSION 8.6.2

[Hide Spatial Reference ▲](#)

Spatial Data Properties ►

VECTOR ►

* LEVEL OF TOPOLOGY FOR THIS DATASET geometry only

GEOMETRIC OBJECTS

FEATURE CLASS NAME BED_PSM_Hendricks_Co_IN
* OBJECT TYPE composite
* OBJECT COUNT 80

[Hide Vector ▲](#)

ARCGIS FEATURE CLASS PROPERTIES ►

FEATURE CLASS NAME BED_PSM_Hendricks_Co_IN
* FEATURE TYPE Simple
* GEOMETRY TYPE Polyline
* HAS TOPOLOGY FALSE
* FEATURE COUNT 80
* SPATIAL INDEX TRUE
* LINEAR REFERENCING FALSE

[Hide ArcGIS Feature Class Properties ▲](#)

[Hide Spatial Data Properties ▲](#)

Data Quality ►

SCOPE OF QUALITY INFORMATION ►

RESOURCE LEVEL dataset

[Hide Scope of quality information ▲](#)

DATA QUALITY REPORT - COMPLETENESS OMISSION ►

MEASURE DESCRIPTION

In conducting the mapping, the author(s) evaluated hundreds of water well records, especially those having relatively complete information on well location, static water level, well depth, ground elevation, and lithology. There were areas in the county with sparse information because of lack of well records or incomplete records.

[Hide Data quality report - Completeness omission ▲](#)

DATA QUALITY REPORT - QUANTITATIVE ATTRIBUTE ACCURACY ►

MEASURE DESCRIPTION

The mapping was conducted after a thorough documentation of well locations and water well record details.

[Hide Data quality report - Quantitative attribute accuracy ▲](#)

DATA QUALITY REPORT - ABSOLUTE EXTERNAL POSITIONAL ACCURACY ►

MEASURE DESCRIPTION

The locations of many wells were field checked and the locations posted on 7.5 minute topographic maps. Visual confirmation of wells was not always possible. Many locations were based only on the street address, driving directions, or other location information provided on the well record.

[Hide Data quality report - Absolute external positional accuracy ▲](#)

[Hide Data Quality ▲](#)

Lineage ►

PROCESS STEP ►

DESCRIPTION

After selection of water well records was complete, specific well data and other maps and reports were considered in the mapping process. For example, ground elevation, static water level, well depth, aquifer top and bottom elevation and lithology were obtained from well records. Other maps and reports included regional potentiometric surface elevations, hydrogeologic settings, groundwater availability, bedrock topography, and surface topography.

[Hide Process step ▲](#)

PROCESS STEP ►

WHEN THE PROCESS OCCURRED 2015-03-01 00:00:00

DESCRIPTION

Data were selected by careful evaluation of water well records to determine if the wells were field located and if they contained complete and reasonable information.

[Hide Process step ▲](#)

SOURCE DATA ►

DESCRIPTION

Water well records from the IDNR-DOW well record database; USGS topography maps; various consultant geotechnical reports

SOURCE CITATION ►

TITLE **Bedrock Potentiometric Surface Map Hendricks County, Indiana**
PUBLICATION DATE 2015-06-29 01:00:00
CREATION DATE 2015-03-01 00:00:00

EDITION 1

SERIES

NAME **Bedrock Potentiometric Surface Map**
ISSUE **PSM 58-B**

RESPONSIBLE PARTY

ORGANIZATION'S NAME **IDNR Division of Water, Resource Assessment Section**
INDIVIDUAL'S NAME **Robert K. Schmidt**
CONTACT'S ROLE **originator**

RESPONSIBLE PARTY

ORGANIZATION'S NAME **Indiana Department of Natural Resources, Division of Water**
CONTACT'S ROLE **publisher**

CONTACT INFORMATION ►

ADDRESS
DELIVERY POINT **Indianapolis, IN**

[Hide Contact information ▲](#)

[Hide Source citation ▲](#)

[Hide Source data ▲](#)

[Hide Lineage ▲](#)

Geoprocessing history ►

PROCESS

PROCESS NAME **FeatureClassToFeatureClass_16**
DATE **2007-01-02 11:26:21**
TOOL LOCATION **C:\Program Files\ArcGIS\ArcToolbox\Toolboxes\Conversion Tools.tbx\FeatureClassToFeatureClass**

COMMAND ISSUED

```
FeatureClassToFeatureClass G:\PublishedData\County-Boundary_INDOT_2004.shp "C:\Documents and Settings\stburns\Application Data\ESRI\INDOT_COE_LIBRARY\INDOT@CoE_Library.sde"
COUNTY_BOUNDARY_INDOT_IN # "OBJECTID_1 OBJECTID_1 true false false 9 Long 0
9 ,First,#,G:\PublishedData\County-Boundary_INDOT_2004.shp,OBJECTID_1,-1,-1;OBJECTID OBJECTID true
false false 9 Long 0 9 ,First,#,G:\PublishedData\County-Boundary_INDOT_2004.shp,OBJECTID,-1,-
1;AREA AREA true false false 13 Float 0 0 ,First,#,G:\PublishedData\County-
Boundary_INDOT_2004.shp,AREA,-1,-1;PERIMETER PERIMETER true false false 13 Float 0
0 ,First,#,G:\PublishedData\County-Boundary_INDOT_2004.shp,PERIMETER,-1,-1;COUNTY_NEW COUNTY_NEW
true false false 9 Long 0 9 ,First,#,G:\PublishedData\County-Boundary_INDOT_2004.shp,COUNTY_NEW,-
1,-1;COUNTY_N_1 COUNTY_N_1 true false false 9 Long 0 9 ,First,#,G:\PublishedData\County-
Boundary_INDOT_2004.shp,COUNTY_N_1,-1,-1;Shape_Leng Shape_Leng true false false 19 Double 0
0 ,First,#,G:\PublishedData\County-Boundary_INDOT_2004.shp,Shape_Leng,-1,-1;dissolve dissolve true
false false 5 Text 0 0 ,First,#,G:\PublishedData\County-Boundary_INDOT_2004.shp,dissolve,-1,-
1;Name Name true false false 50 Text 0 0 ,First,#,G:\PublishedData\County-
Boundary_INDOT_2004.shp,Name,-1,-1;Shape_Le_1 Shape_Le_1 true false false 19 Double 0
0 ,First,#,G:\PublishedData\County-Boundary_INDOT_2004.shp,Shape_Le_1,-1,-1;Shape_Area Shape_Area
true false false 19 Double 0 0 ,First,#,G:\PublishedData\County-
Boundary_INDOT_2004.shp,Shape_Area,-1,-1" INDOT "C:\Documents and Settings\stburns\Application
Data\ESRI\INDOT_COE_LIBRARY\INDOT@CoE_Library.sde\INDOT.COUNTY_BOUNDARY_INDOT_IN"
```

INCLUDE IN LINEAGE WHEN EXPORTING METADATA **No**

PROCESS

PROCESS NAME

DATE 2012-03-15 09:07:45

TOOL LOCATION C:\Program Files (x86)\ArcGIS\Desktop10.0\ArcToolbox\Toolboxes\Conversion Tools.tbx\FeatureClassToFeatureClass

COMMAND ISSUED

```
FeatureClassToFeatureClass "Database
Connections\coe_direct_old.sde\INDOT.COUNTY_BOUNDARY_INDOT_IN" "Database
Connections\gio_user_new.sde" COUNTY_BOUNDARY_INDOT_IN # "OBJECTID_1" "OBJECTID_1" true true false
4 Long 0 9 ,First,#,Database
Connections\coe_direct_old.sde\INDOT.COUNTY_BOUNDARY_INDOT_IN,OBJECTID_1,-1,-1;OBJECTID "OBJECTID"
true true false 4 Long 0 9 ,First,#,Database
Connections\coe_direct_old.sde\INDOT.COUNTY_BOUNDARY_INDOT_IN,OBJECTID,-1,-1;AREA "AREA" true true
false 8 Double 8 38 ,First,#,Database
Connections\coe_direct_old.sde\INDOT.COUNTY_BOUNDARY_INDOT_IN,INDOT.COUNTY_BOUNDARY_INDOT_IN.AREA,-
1,-1;PERIMETER "PERIMETER" true true false 8 Double 8 38 ,First,#,Database
Connections\coe_direct_old.sde\INDOT.COUNTY_BOUNDARY_INDOT_IN,PERIMETER,-1,-1;COUNTY_NEW
"COUNTY_NEW" true true false 4 Long 0 9 ,First,#,Database
Connections\coe_direct_old.sde\INDOT.COUNTY_BOUNDARY_INDOT_IN,COUNTY_NEW,-1,-1;COUNTY_N_1
"COUNTY_N_1" true true false 4 Long 0 9 ,First,#,Database
Connections\coe_direct_old.sde\INDOT.COUNTY_BOUNDARY_INDOT_IN,COUNTY_N_1,-1,-1;SHAPE LENG
"SHAPE LENG" true true false 8 Double 8 38 ,First,#,Database
Connections\coe_direct_old.sde\INDOT.COUNTY_BOUNDARY_INDOT_IN,SHAPE LENG,-1,-1;DISSOLVE "DISSOLVE"
true true false 5 Text 0 0 ,First,#,Database
Connections\coe_direct_old.sde\INDOT.COUNTY_BOUNDARY_INDOT_IN,DISSOLVE,-1,-1;NAME "NAME" true true
false 50 Text 0 0 ,First,#,Database
Connections\coe_direct_old.sde\INDOT.COUNTY_BOUNDARY_INDOT_IN,NAME,-1,-1;SHAPE_LE_1 "SHAPE_LE_1"
true true false 8 Double 8 38 ,First,#,Database
Connections\coe_direct_old.sde\INDOT.COUNTY_BOUNDARY_INDOT_IN,SHAPE_LE_1,-1,-1;SHAPE_AREA
"SHAPE_AREA" false false true 0 Double 0 0 ,First,#,Database
Connections\coe_direct_old.sde\INDOT.COUNTY_BOUNDARY_INDOT_IN,SHAPE.AREA,-1,-1;SHAPE_LEN
"SHAPE_LEN" false false true 0 Double 0 0 ,First,#,Database
Connections\coe_direct_old.sde\INDOT.COUNTY_BOUNDARY_INDOT_IN,SHAPE.LEN,-1,-1" INDOT
```

INCLUDE IN LINEAGE WHEN EXPORTING METADATA No

PROCESS

PROCESS NAME

DATE 2012-03-15 09:08:23

TOOL LOCATION C:\Program Files (x86)\ArcGIS\Desktop10.0\ArcToolbox\Toolboxes\Data Management Tools.tbx\ChangePrivileges

COMMAND ISSUED

```
ChangePrivileges 'Database Connections\gio_user_new.sde\GIO.COUNTY_BOUNDARY_INDOT_IN' coe GRANT #
```

INCLUDE IN LINEAGE WHEN EXPORTING METADATA No

PROCESS

PROCESS NAME

DATE 2012-05-25 13:59:47

TOOL LOCATION c:\program files\arcgis\desktop10.0\ArcToolbox\Toolboxes\Data Management Tools.tbx\PolygonToLine

COMMAND ISSUED

```
PolygonToLine Hendricks_County_Boundary J:\!
Potentiometric\Hendricks\Shapefiles\Hendricks_UNC_PSM_Work.shp IDENTIFY_NEIGHBORS
```

INCLUDE IN LINEAGE WHEN EXPORTING METADATA No

PROCESS

PROCESS NAME

DATE 2012-09-27 09:00:11

TOOL LOCATION c:\program files\arcgis\desktop10.0\ArcToolbox\Toolboxes\Analysis Tools.tbx\Erase

COMMAND ISSUED

```
Erase Hendricks_BDRK_PSM_Work Bdrk_No_Data_areas J:\!
Potentiometric\Hendricks\Shapefiles\PSM_Bdrk_Modified_Lines.shp #
```

INCLUDE IN LINEAGE WHEN EXPORTING METADATA No

[Hide Geoprocessing history ▲](#)

DISTRIBUTOR ►

CONTACT INFORMATION

INDIVIDUAL'S NAME Robert K. Schmidt
ORGANIZATION'S NAME Indiana Department of Natural Resources, Division of Water
CONTACT'S POSITION Resource Assessment Section
CONTACT'S ROLE distributor

CONTACT INFORMATION ►

PHONE

VOICE 317-232-4160
FAX 317-233-4579

ADDRESS

DELIVERY POINT 402 W. Washington Street W264
CITY Indianapolis
ADMINISTRATIVE AREA Indiana
POSTAL CODE 46204
COUNTRY US
E-MAIL ADDRESS rschmidt@dnr.IN.gov

HOURS OF SERVICE

8:15am - 4:15pm M-F except Government Holidays

[Hide Contact information ▲](#)

[Hide Distributor ▲](#)

DISTRIBUTION FORMAT

* NAME Shapefile

TRANSFER OPTIONS

* TRANSFER SIZE 0.707

ONLINE SOURCE

LOCATION <http://www.in.gov/dnr/water/7256.htm>

[Hide Distribution ▲](#)

Fields ►

DETAILS FOR OBJECT BED_PSM_Hendricks_Co_IN ►

* TYPE Feature Class

* ROW COUNT 80

FIELD FID ►

* ALIAS FID

* DATA TYPE OID

* WIDTH 4

* PRECISION 0

* SCALE 0

* FIELD DESCRIPTION

Internal feature number.

* DESCRIPTION SOURCE

Esri

* DESCRIPTION OF VALUES

Sequential unique whole numbers that are automatically generated.

[Hide Field FID ▲](#)

FIELD Shape ►

- * ALIAS Shape
- * DATA TYPE Geometry
- * WIDTH 0
- * PRECISION 0
- * SCALE 0
- * FIELD DESCRIPTION
Feature geometry.
- * DESCRIPTION SOURCE
ESRI
- * DESCRIPTION OF VALUES
Coordinates defining the features.

[Hide Field Shape ▲](#)

FIELD Static_E ►

- * ALIAS STATIC_E
- * DATA TYPE SmallInteger
- * WIDTH 4
- * PRECISION 4
- * SCALE 0
- * FIELD DESCRIPTION
Bedrock contour lines of static water levels.

[Hide Field Static_E ▲](#)

[Hide Details for object BED_PSM_Hendricks_Co_IN ▲](#)

[Hide Fields ▲](#)

Metadata Details ►

METADATA LANGUAGE English (UNITED STATES)
METADATA CHARACTER SET utf8 - 8 bit UCS Transfer Format

SCOPE OF THE DATA DESCRIBED BY THE METADATA dataset
SCOPE NAME * dataset

* LAST UPDATE 2016-01-20

ARCGIS METADATA PROPERTIES

METADATA FORMAT ArcGIS 1.0
METADATA STYLE FGDC CSDGM Metadata
STANDARD OR PROFILE USED TO EDIT METADATA FGDC

CREATED IN ARCGIS FOR THE ITEM 2016-01-20 08:59:30
LAST MODIFIED IN ARCGIS FOR THE ITEM 2016-01-20 11:18:42

AUTOMATIC UPDATES

HAVE BEEN PERFORMED Yes
LAST UPDATE 2016-01-20 11:17:15

ITEM LOCATION HISTORY

ITEM COPIED OR MOVED 2016-01-20 08:59:31

FROM M:\!Potentiometric\Hendricks Revised 2015\Final_Shape_Files\BED_PSM_Hendricks_Co_IN

TO \\iotisip01pa\dnrgis\$\!Potentiometric\Hendricks Revised 2015\!_Web_Products\BED_PSM_Hendricks_Co_IN

[Hide Metadata Details ▲](#)

Metadata Contacts ►

METADATA CONTACT

INDIVIDUAL'S NAME Robert K. Schmidt

ORGANIZATION'S NAME Indiana Department of Natural Resources, Division of Water

CONTACT'S ROLE point of contact

CONTACT INFORMATION ►

PHONE

VOICE 317-232-4160

FAX 317-233-4579

ADDRESS

DELIVERY POINT 402 W. Washington Street W264

CITY Indianapolis

ADMINISTRATIVE AREA Indiana

POSTAL CODE 46204

COUNTRY US

E-MAIL ADDRESS rschmidt@dnr.IN.gov

HOURS OF SERVICE

8:15am - 4:15pm M-F except Government Holidays

[Hide Contact information ▲](#)

[Hide Metadata Contacts ▲](#)

Metadata Constraints ►

LEGAL CONSTRAINTS

ACCESS CONSTRAINTS other restrictions

OTHER CONSTRAINTS

Access constraints: This metadata file is intended to accompany the subject geospatial set. This file may be updated, and the most recent version is available by contacting the IDNR Division of Water.

[Hide Metadata Constraints ▲](#)

Thumbnail and Enclosures ►

ENCLOSURE

ENCLOSURE TYPE File

DESCRIPTION OF ENCLOSURE original metadata

ORIGINAL METADATA DOCUMENT, WHICH WAS TRANSLATED yes

SOURCE METADATA FORMAT fgdc

[Hide Thumbnail and Enclosures ▲](#)

FGDC Metadata (read-only) ▼