

Date: 10/7/2025

**Addendum No. 1
To
Specifications
For Project No. ENG2403734214**

Description: CULVERT REPLACEMENT/REPAIR

Location: OUABACHE STATE PARK

FOR AGENCY: Department of Natural Resources

The information contained in this Addendum shall become a part of the basic plans and specifications the same as if original incorporated therein. The original plans and specifications shall remain in their entirety, except as modified by this Addendum. The items herein shall supersede information in the specifications and on the plans.

ITEM No. 1 – Culvert 2 Drain Pipes: On Culvert #2, how are the pipes that run parallel to the road being managed &/or tied into the proposed replacement structure? Alternately, will 90° elbows be used to daylight them adjacent to Culvert #2?



Answer: As shown on the plans, the drainage pipes shown in the picture above shall be sustained by installing a 90 degree elbow and daylighting the pipe out of the embankment.

ITEM No. 2 - Erosion Control Blankets: What erosion control blankets are acceptable at DNR facilities?

Answer: All erosion control blankets must be net free.

ITEM No. 3 – Temporary Access Road: By the time this contract is awarded the asphalt plants may not be open to construct temporary access this fall. Therefore culverts #1 and #2 would not be able to start until April when the plants reopen. Will the DNR allow us to start the project if asphalt cannot be completed this season?

Answer: IDNR recognizes that this may occur. Culverts 1 and 2 shall be completed by April 1, 2026. At both culverts, temporary aggregate base can be installed to the existing profile grade to open the roadway by 4/11/2025. Once plants have opened, the pavement should be able to be constructed using flaggers. Coordination with the Property Manager, Jon Winne will be required to determine when the best time is to construct the remaining pavement structure to minimize operational impacts to the park.

ITEM No. 4 – Permits/Ordinances: Will any additional requirements be needed to meet Wells County Flood Damage Prevention Ordinance?

Answer: No, due to the proposed structures being in-kind replacement, FEMA accepts as no rise. Additionally, due to this project being on state owned lands, Wells County ordinance do not apply to this project. General & special conditions shall be followed in the IDNR Division of Water permit.

ITEM No. 5 – Guardrail at Culvert #1: Is a guardrail required at culvert #1? The existing it proposed to be removed, but a new one is not listed.

Answer: There will be no new guardrail at culvert #1 due to standoff with the new culvert.

ITEM No. 6 - Vylon Slip Liner: I was looking over the plans for this job and see that it calls for slip lining of the culverts with Snap Tite or an approved equal. Can we add Vylon Slip liner as an approved equal for this project?

Answer: Product is denied for use on this project.

ITEM No. 7 - Guardrail: Do we have to install Guardrail on Culverts and if so where does it show on plans or in specs?

Answer: No guardrail is planned at any of the culverts.

ITEM No. 8 – Quadex GeoKrete: Would the owner consider Quadex GeoKrete an approved lining system per culvert #4? GeoKrete® is a fully structural and corrosion-resistant geopolymer mortar that provides exceptional protection in environments with high hydrogen sulfide levels. This eco-friendly, one-component material is easy to use— simply add water. It is formulated from industrial byproducts, enhanced with monocrystalline quartz aggregate, ensuring superior physical properties and chemical resistance.

Answer: Product is denied for use on this project.

ITEM No. 9 - Subsurface Utility Engineering (SUE) Information:

Answer: SUE information was collected at Culvert #1 only. See Attachment 1. The depths of utilities are expected to be similar at Culvert #2.

ITEM No. 10 – Chain Link Gate for Temporary Access Road:

Answer: The existing 16' gate to access Wenger Court will need to be removed and replaced. The proposed gate shall be double gate with a 24' opening (2 x 12' gates) centered on the Temporary Access Road as per

INDOT Standard Drawing E 603-CLTF-03. See Attachment #2. IDNR desires to retain the existing gate and the Contractor shall provide to the Property Manager.

ITEM No. _11 – Pre-Bid Minutes:

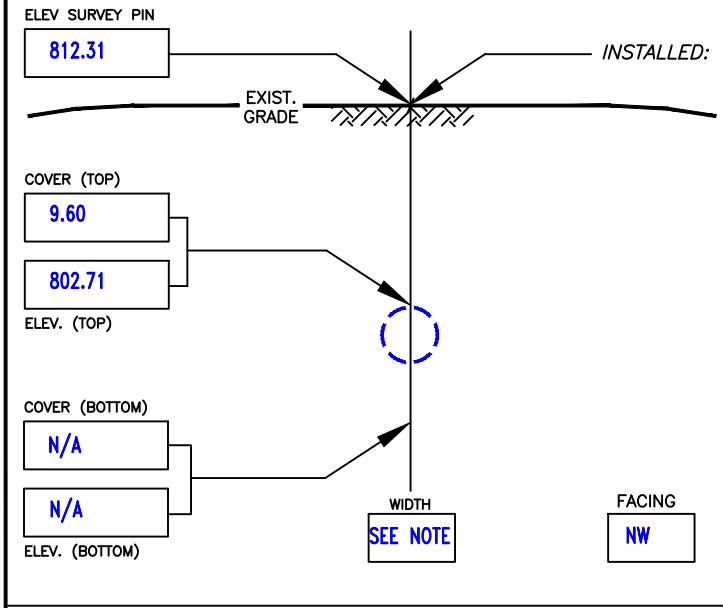
Answer: See Attachment 3

END OF ADDENDUM

ATTACHMENT 1
SUE Information at Culvert #1

PROJECT NAME:	SMALL STRUCTURE REPLACEMENT ON PARK/SERVICE ROAD
LOCATE REQUESTED BY:	INDOT
UTILITY REQUESTED:	ELECTRIC
UTILITY FOUND:	ELECTRIC (SEE NOTE)
MATERIAL AS FOUND:	SEE NOTE
SIZE AS FOUND:	SEE NOTE

DESIGNATING NO.:	2200177				
PROJECT LOCATION:	HARRISON TOWNSHIP, WELLS COUNTY, INDIANA				
SHEET #:	5 OF 11	PROPOSED:	STORM		
FORM BY:	JY	ASSISTED BY:	RK	# OF HOLES:	1
PAVING CONDITION:	N/A	DATE DUG:	6-29-23		
SOIL CONDITIONS:	SOFT WET CLAY ROCKY				
UTILITY CONDITION:	SEE NOTE				



HUB & TACK AT: TOP OF UTILITY. MARKING TAPE: RED

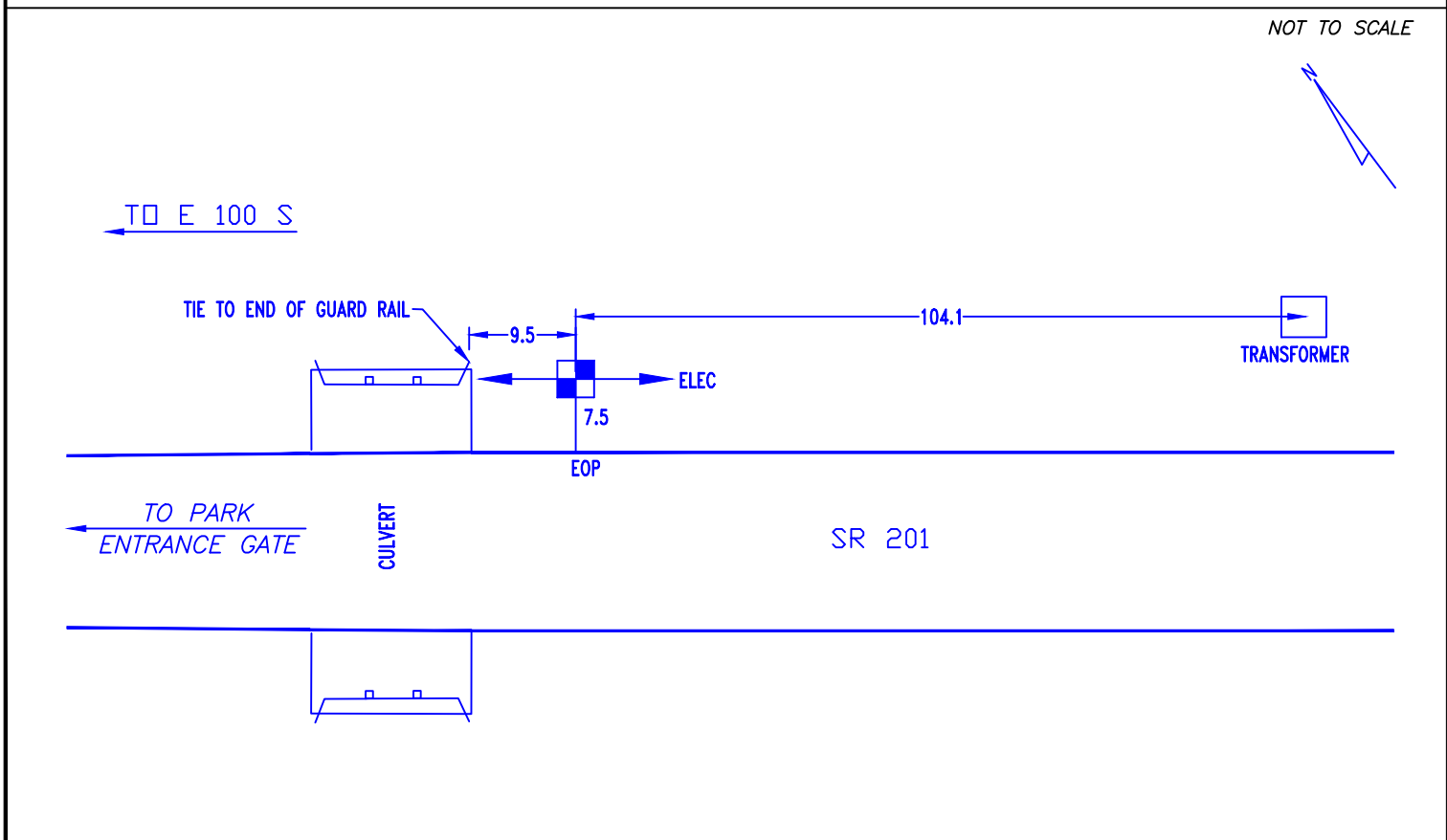
SURVEY PIN LOCATED BY: APEX CONSULTING & SURVEYING

SURVEY INFO.: ALL MEASUREMENTS ON THIS FORM ARE IN ENGLISH UNITS (FEET).

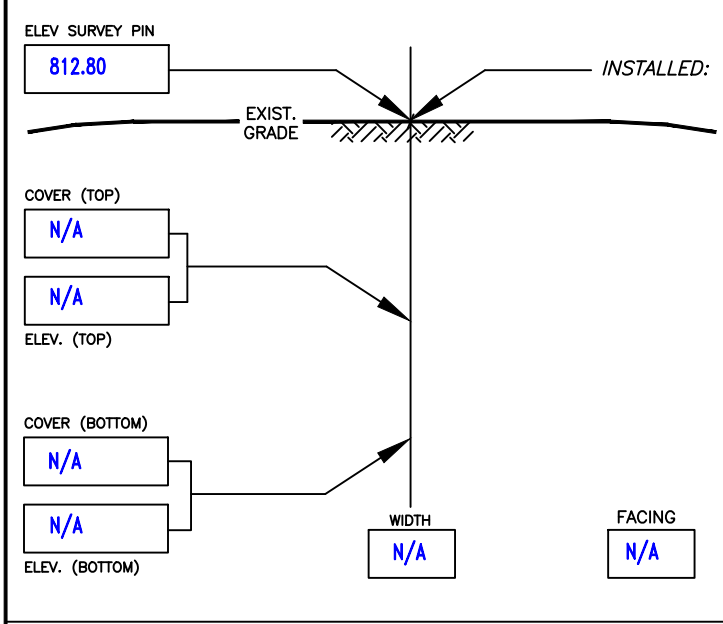
NORTHING	EASTING	PIN ELEV.
181539.73	823403.66	812.31

SURVEY CONTROL POINTS PROVIDED BY INDOT.
 HORIZONTAL DATUM = NAD83 (2011) / InGCS WELLS,
 VERTICAL DATUM = NAVD 1988.

NOTES: UNABLE TO VISUALLY CONFORM SIZE AND MATERIAL OF UTILITY DUE TO EXCESSIVE GROUND WATER ENCOUNTERED IN TEST HOLE.



PROJECT NAME: SMALL STRUCTURE REPLACEMENT ON PARK/SERVICE ROAD	DESIGNATING NO.: 2200177
LOCATE REQUESTED BY: INDOT	PROJECT LOCATION: HARRISON TOWNSHIP, WELLS COUNTY, INDIANA
UTILITY REQUESTED: 6" SANITARY FORCE MAIN	SHEET #: 5 OF 11 PROPOSED: STORM
UTILITY FOUND: SEE NOTE	FORM BY: JY ASSISTED BY: RK # OF HOLES: 1
MATERIAL AS FOUND: SEE NOTE	PAVING CONDITION: N/A DATE DUG: 6-29-23
SIZE AS FOUND: SEE NOTE	SOIL CONDITIONS: SOFT WET SAND CLAY ROCKY



HUB & TACK AT: **SEE NOTE** MARKING TAPE: **PINK**

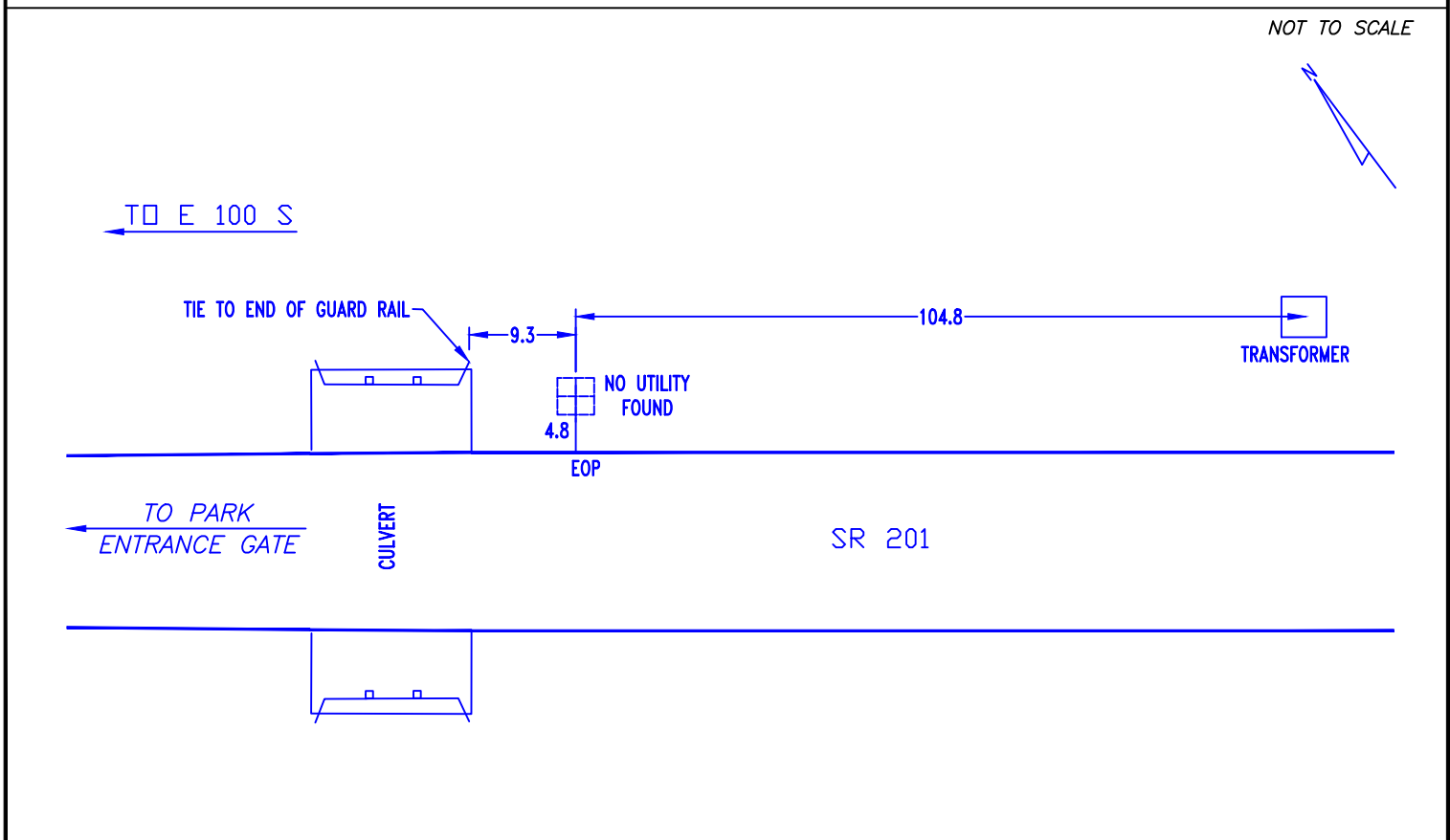
SURVEY PIN LOCATED BY: **APEX CONSULTING & SURVEYING**

SURVEY INFO.: ALL MEASUREMENTS ON THIS FORM ARE IN ENGLISH UNITS (FEET).

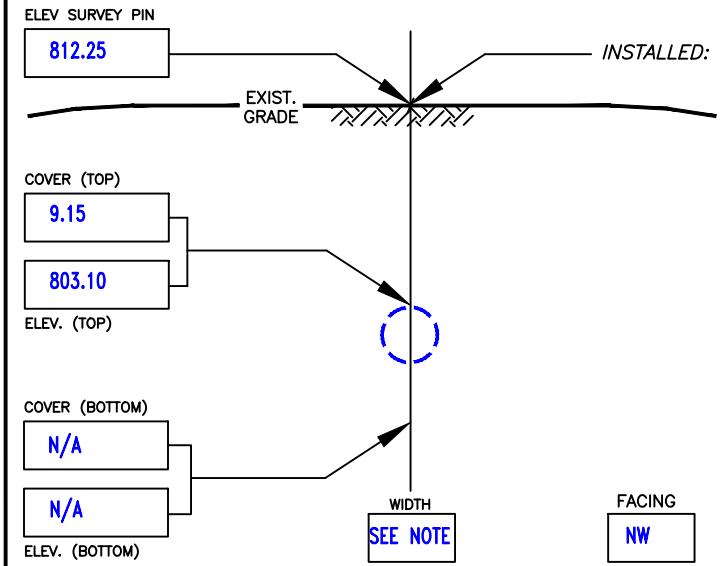
NORTHING	EASTING	PIN ELEV.
181537.65	823402.00	812.80

SURVEY CONTROL POINTS PROVIDED BY INDOT.
 HORIZONTAL DATUM = NAD83 (2011) / InGCS WELLS,
 VERTICAL DATUM = NAVD 1988.

NOTES: **6" PVC SANITARY FORCE MAIN REQUESTED AT THIS LOCATION. NO ELECTRONIC SIGNAL DETECTED. TEST HOLE EXCAVATED OVER MISS UTILITY MARK TO A DEPTH OF 10'±. ENCOUNTERED EXCESSIVE GROUND WATER. REQUESTED UTILITY NOT FOUND AT THIS LOCATION. HUB SET OVER TOP OF TEST HOLE ATTEMPT.**



PROJECT NAME: SMALL STRUCTURE REPLACEMENT ON PARK/SERVICE ROAD	DESIGNATING NO.: 2200177
LOCATE REQUESTED BY: INDOT	PROJECT LOCATION: HARRISON TOWNSHIP, WELLS COUNTY, INDIANA
UTILITY REQUESTED: ELECTRIC	SHEET #: 5 OF 11 PROPOSED: STORM
UTILITY FOUND: ELECTRIC (SEE NOTE)	FORM BY: JY ASSISTED BY: RK # OF HOLES: 1
MATERIAL AS FOUND: SEE NOTE	PAVING CONDITION: N/A DATE DUG: 6-29-23
SIZE AS FOUND: SEE NOTE	SOIL CONDITIONS: SOFT WET CLAY ROCKY



HUB & TACK AT: **TOP** OF UTILITY. MARKING TAPE: **RED**

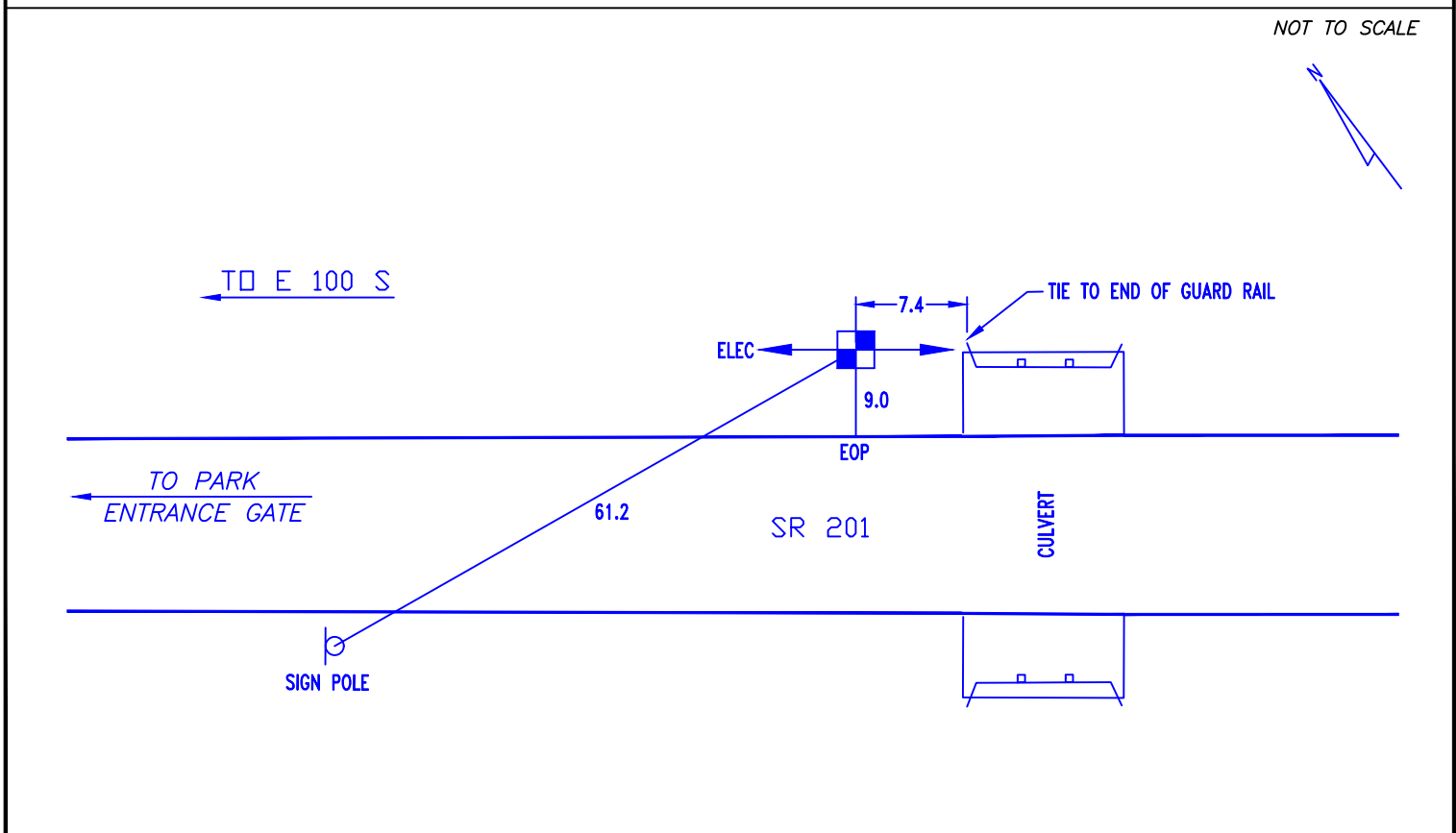
SURVEY PIN LOCATED BY: **APEX CONSULTING & SURVEYING**

SURVEY INFO.: ALL MEASUREMENTS ON THIS FORM ARE IN ENGLISH UNITS (FEET).

NORTHING	EASTING	PIN ELEV.
181558.80	823378.57	812.25

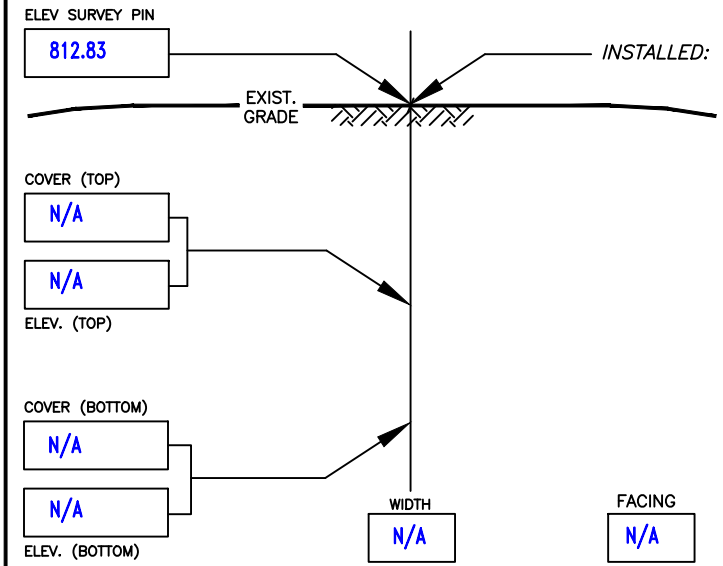
SURVEY CONTROL POINTS PROVIDED BY INDOT.
 HORIZONTAL DATUM = NAD83 (2011) / InGCS WELLS,
 VERTICAL DATUM = NAVD 1988.

NOTES: UNABLE TO VISUALLY CONFORM SIZE AND MATERIAL OF UTILITY DUE TO EXCESSIVE GROUND WATER ENCOUNTERED IN TEST HOLE.



NOT TO SCALE

PROJECT NAME: SMALL STRUCTURE REPLACEMENT ON PARK/SERVICE ROAD	DESIGNATING NO.: 2200177
LOCATE REQUESTED BY: INDOT	PROJECT LOCATION: HARRISON TOWNSHIP, WELLS COUNTY, INDIANA
UTILITY REQUESTED: 6" SANITARY FORCE MAIN	SHEET #: 5 OF 11 PROPOSED: STORM
UTILITY FOUND: SEE NOTE	FORM BY: JY ASSISTED BY: RK # OF HOLES: 1
MATERIAL AS FOUND: SEE NOTE	PAVING CONDITION: N/A DATE DUG: 6-29-23
SIZE AS FOUND: SEE NOTE	SOIL CONDITIONS: SOFT WET SAND CLAY ROCKY



HUB & TACK AT: **SEE NOTE** MARKING TAPE: **PINK**

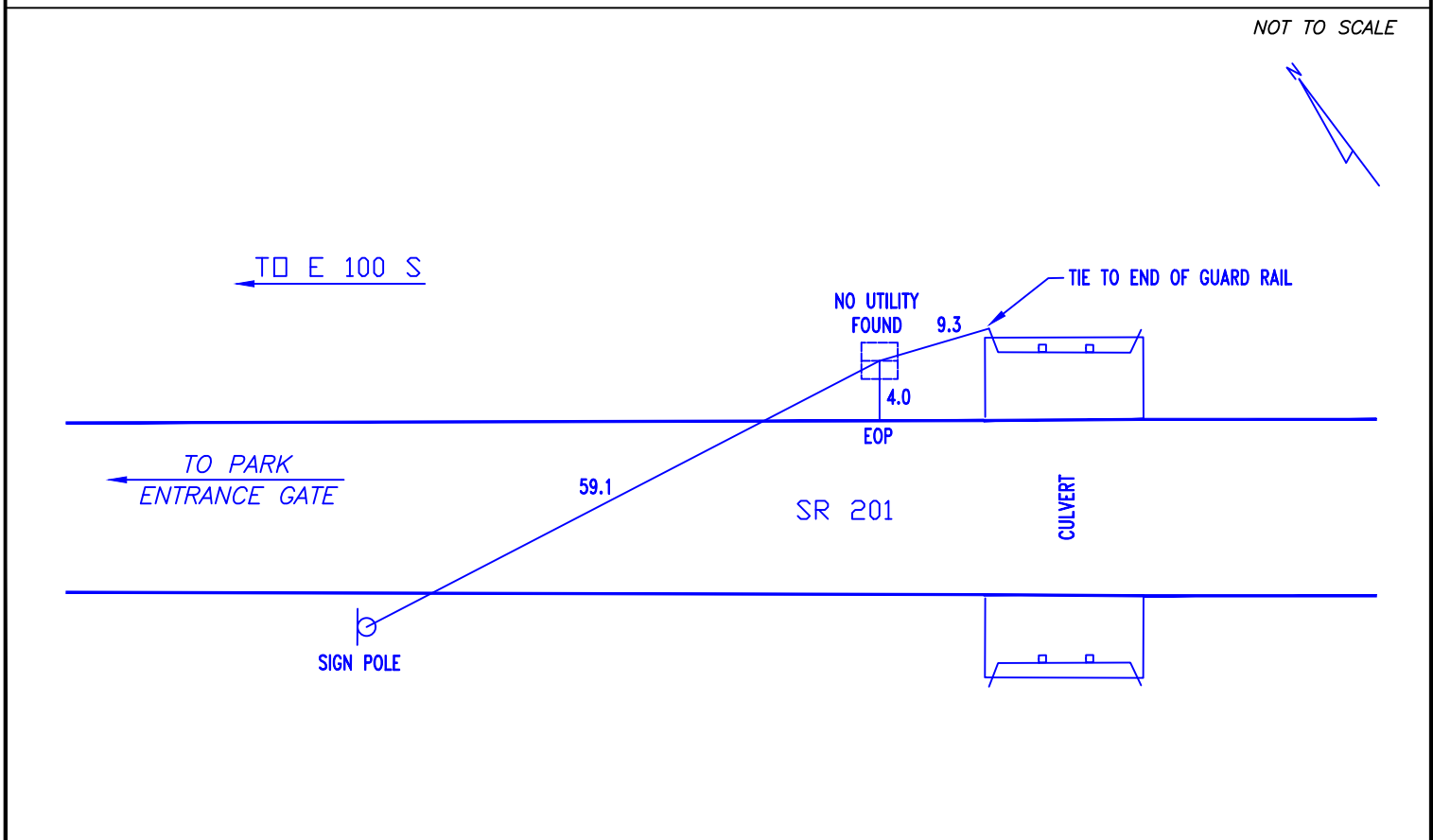
SURVEY PIN LOCATED BY: **APEX CONSULTING & SURVEYING**

SURVEY INFO.: ALL MEASUREMENTS ON THIS FORM ARE IN ENGLISH UNITS (FEET).

NORTHING	EASTING	PIN ELEV.
181554.92	823375.60	812.83

SURVEY CONTROL POINTS PROVIDED BY INDOT.
 HORIZONTAL DATUM = NAD83 (2011) / InGCS WELLS,
 VERTICAL DATUM = NAVD 1988.

NOTES: **6" PVC SANITARY FORCE MAIN REQUESTED AT THIS LOCATION. NO ELECTRONIC SIGNAL DETECTED. TEST HOLE EXCAVATED OVER MISS UTILITY MARK TO A DEPTH OF 6±. UNABLE TO EXCAVATE FURTHER DUE TO EXCESSIVE GROUND WATER ENCOUNTERED IN TEST HOLE. REQUESTED UTILITY NOT FOUND AT THIS LOCATION. HUB SET OVER TOP OF TEST HOLE ATTEMPT.**

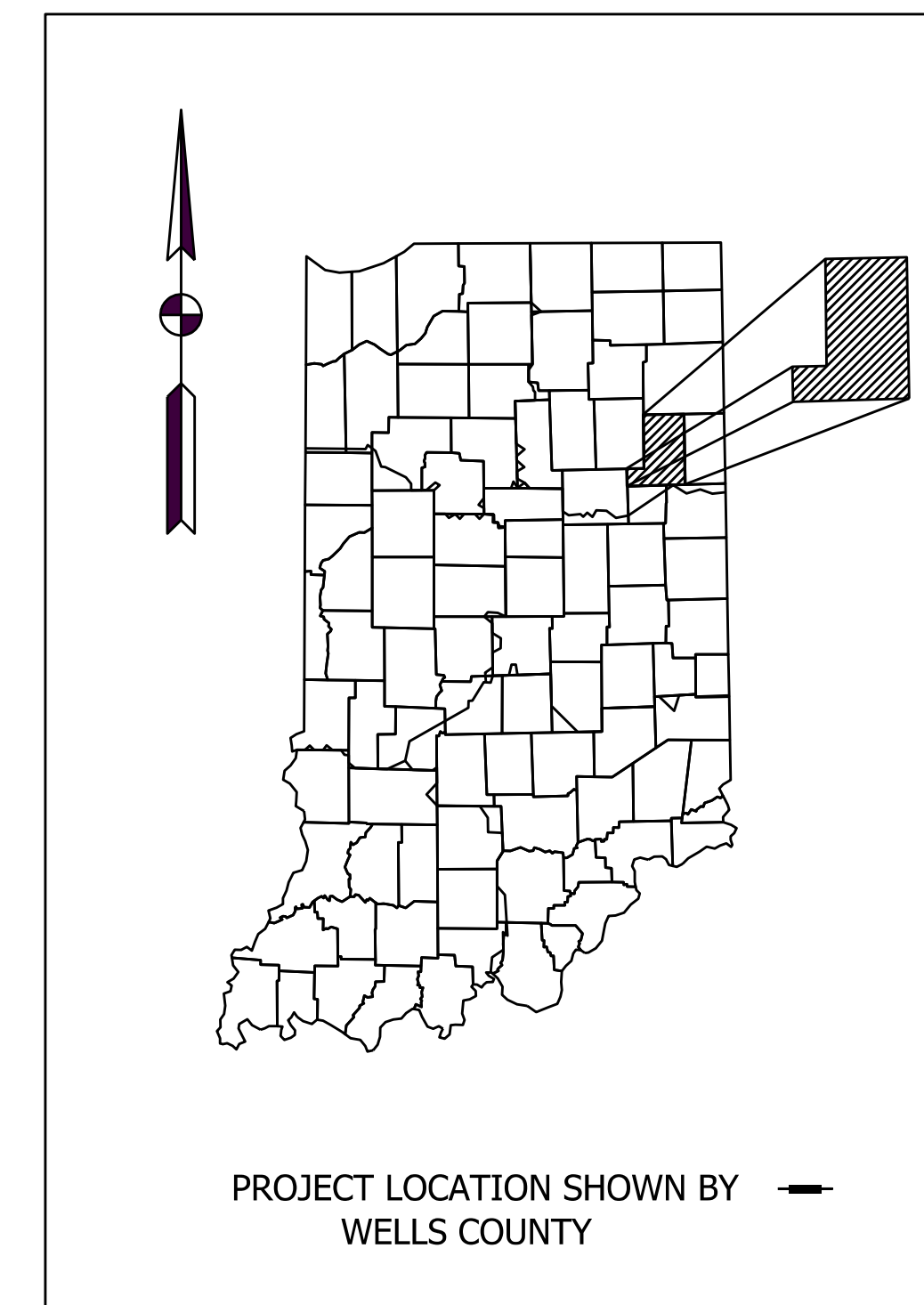


INDEX	
SHEET NO.	DRAWINGS INDEX
1	SUBSURFACE UTILITY ENGINEERING NOTES
2	SUBSURFACE UTILITY ENGINEERING PLAN

GENERAL NOTES	
INFRAMAP CORP. HAS EXERCISED ITS BEST PROFESSIONAL EXPERTISE AND GEOPHYSICAL PROSPECTING TECHNIQUES TO DEVELOP THIS MAPPING OF SUBSURFACE UTILITIES WITHIN THE PROJECT LIMITS.	
SUBSURFACE UTILITY ENGINEERING HAS BEEN PROVIDED IN ACCORDANCE WITH THE STANDARDS AS OUTLINED IN ASCE 38-02. EVERY REASONABLE EFFORT WAS MADE TO LOCATE ALL UTILITIES REQUESTED.	
OUR ELECTRONIC EQUIPMENT CANNOT LOCATE NON-CONDUCTIVE PIPE SYSTEMS AND/OR FIBER OPTIC LINES WITHOUT TRACER WIRE. IRRIGATION SYSTEMS ARE NOT INCLUDED IN THE SCOPE OF SERVICES.	
BASEMAP AND TOPOGRAPHY WERE NOT PROVIDED BY CLIENT.	
UTILITY SIZE AND/OR MATERIAL INFORMATION IS BASED ON BEST AVAILABLE FIELD AND RECORD INFORMATION. UTILITIES DEPICTED BEYOND PROJECT LIMITS ARE FURNISHED AS A COURTESY AND SHOULD NOT BE CONSIDERED COMPLETE.	
IF TARGETED UTILITIES DO NOT PROVIDE ENOUGH INFORMATION OR IF SOIL-GEOTECHNICAL BORINGS ARE PART OF THIS PROJECT, WE RECOMMEND TEST HOLES.	
UTILITY RECORDS WERE PROVIDED TO INFRAMAP BY CLIENT. RECORD RESEARCH WAS NOT PART OF INFRAMAP CORP. SCOPE OF SERVICES.	
SURVEY CONTROL WAS PROVIDED BY INDOT. HORIZONTAL DATUM - NAD83 (2011) / InGCS WELLS. VERTICAL DATUM - NAVD 1988.	

TEST HOLE NOTES	
THIS SERVICE REPRESENTS THE BEST AVAILABLE DATA ON SUB-SURFACE UTILITIES GIVEN A COST EFFECTIVE INVESTIGATION USING NON-DESTRUCTIVE AIR-VACUUM EXCAVATION. USE OF THIS SERVICE DOES NOT RELIEVE INTERESTED PARTIES FROM THEIR RESPONSIBILITY TO MAKE REQUIRED NOTIFICATIONS PRIOR TO EXCAVATION.	
THIS SERVICE WAS PROVIDED WITH DUE DILIGENCE AND IN A MANNER CONSISTENT WITH STANDARDS OF THE SUB-SURFACE UTILITY LOCATING INDUSTRY. EVERY REASONABLE EFFORT WAS MADE TO LOCATE ALL UTILITIES REQUESTED.	

UTILITY OWNERS	
COMMUNICATIONS	
AT&T - DISTRIBUTION ATT INDIANA UTILITY COORDINATION G09871@ATT.COM	
ELECTRIC, SEWER	
BLUFFTON UTILITIES KELLY WHITE (260) 402-8782 KELLY.WHITE@BLUFFTONINDIANA.GOV 128 E MARKET STREET BLUFFTON, IN 46714	




QUALITY LEVEL A (QA) IS THE USE OF EXCAVATING EQUIPMENT THAT IS NONDESTRUCTIVE AT CERTAIN AREAS TO OBTAIN HORIZONTAL AND VERTICAL INFORMATION ON UTILITIES ALONG WITH TYPE, CONDITION, SIZE AND MATERIAL OF A UTILITY.

QUALITY LEVEL B (QB) IS THE USE OF ELECTRONIC SURFACE TECHNIQUES TO OBTAIN THE HORIZONTAL POSITION AND EXISTENCE OF UNDERGROUND UTILITIES. THESE FIELD LOCATED UTILITIES ARE SURVEYED.

QUALITY LEVEL C (QC) IS THE SURVEYING OF ABOVE GROUND UTILITY SURFACE FEATURES SUCH AS VALVES, METERS, ETC. ALONG WITH OBTAINING INFORMATION OF THE UTILITIES FROM THE UTILITY RECORDS.

QUALITY LEVEL D (QD) THIS INFORMATION IS OBTAINED ONLY FROM EXISTING UTILITY RECORDS.

END OF INFORMATION SIDE THE EQ IS PLACED AT THE END OF A LINE WHERE ELECTRONICALLY A UTILITY CAN NO LONGER BE FOLLOWED. COMMONLY THIS HAPPENS WHERE A UTILITY CHANGES MATERIAL FROM CONDUCTIVE TO NON-CONDUCTIVE OR WHERE A UTILITY IS SUSPECTED TO END (STUB, BUT NO RECORDS EXIST TO PROVE IT.



UTILITY LOCATORS
SURVEYORS
CONSULTING ENGINEERS

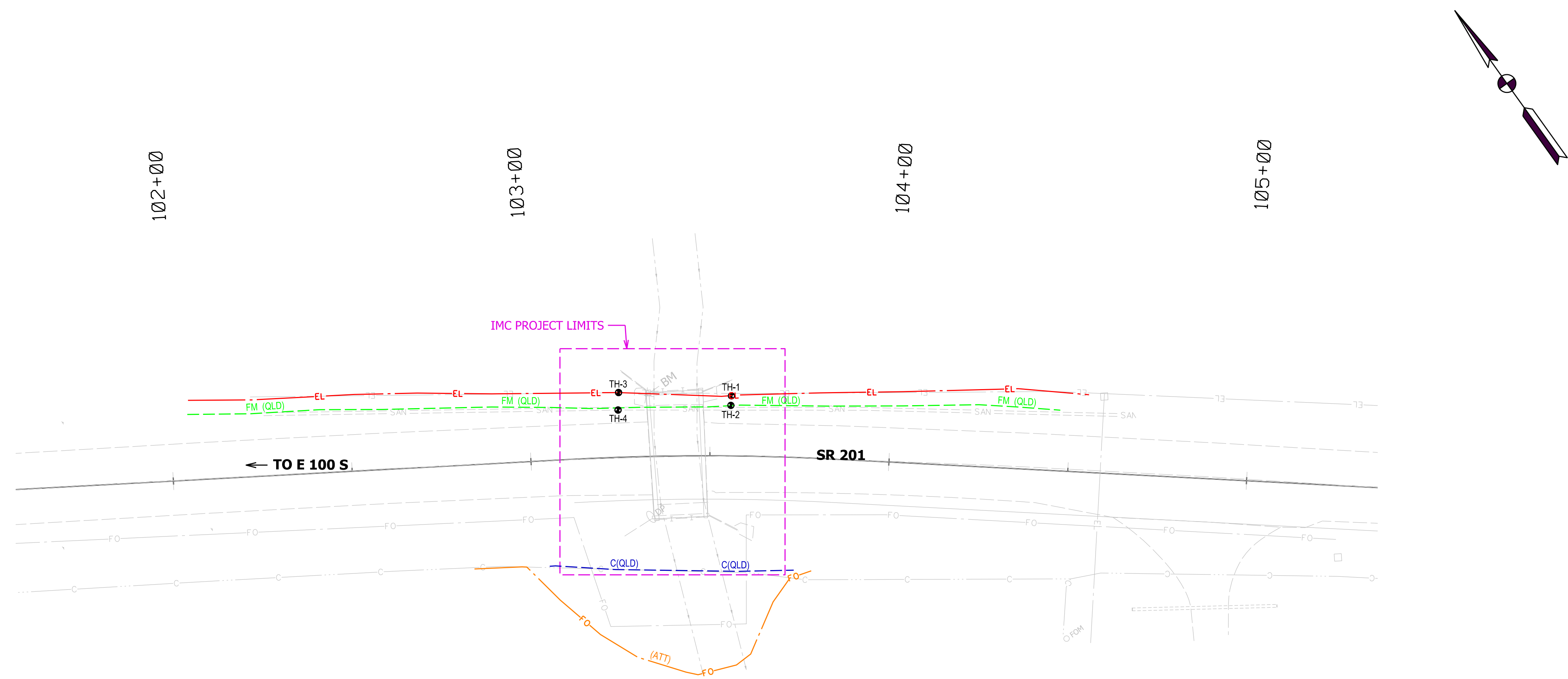
10365 CEDAR LANE, GLEN ALLEN, VIRGINIA 23059
(804)550-2937 (800)863-3748 FAX (804)550-3296

RECOMMENDED FOR APPROVAL	DESIGN ENGINEER	DATE
DESIGNATED: JY	06-29-23	DRAWN: SPC 08-02-23
CHECKED: SE	08-03-23	CHECKED: NP 08-07-23

INDIANA
DEPARTMENT OF TRANSPORTATION

SUBSURFACE UTILITY ENGINEERING NOTE
SMALL STRUCTURE REPLACEMENT
ON PARK/SERVICE ROAD

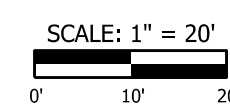
HORIZONTAL SCALE	BRIDGE FILE
N/A	DESIGNATION 2200177
CONTRACT	SHEETS 1 of 2
PROJECT	I123002



TEST HOLE SUMMARY

TH #	UTILITY LOCATED	NORTHING	EASTING	PIN ELEVATION (FEET)	TOP OF UTILITY ELEVATION (FEET)	ACTUAL DEPTH (FEET)	DATE	NOTE
1	ELECTRIC	181539.73	823403.66	812.31	802.71	9.60	06/29/23	SEE TEST HOLE FORM FOR MORE DETAILS
2	NO UTILITY FOUND	181537.65	823402.00	812.80	N/A	N/A	06/29/23	SEE TEST HOLE FORM FOR MORE DETAILS
3	ELECTRIC	181558.80	823378.57	812.25	803.10	9.15	06/29/23	SEE TEST HOLE FORM FOR MORE DETAILS
4	NO UTILITY FOUND	181554.92	823375.60	812.83	N/A	N/A	06/29/23	SEE TEST HOLE FORM FOR MORE DETAILS

- SEE TEST HOLE CERTIFICATION FORM FOR ADDITIONAL INFORMATION.
- THE ACTUAL DEPTH IS MEASURED NOT CALCULATED.



QUALITY LEVEL A (QA) IS THE USE OF EXCAVATING EQUIPMENT THAT IS NONDESTRUCTIVE AT CERTAIN AREAS TO OBTAIN HORIZONTAL AND VERTICAL INFORMATION ON UTILITIES ALONG WITH TYPE, CONDITION, SIZE, AND MATERIAL OF A UTILITY.

QUALITY LEVEL B (QB) IS THE USE OF ELECTRONIC SURFACE TECHNIQUES TO OBTAIN THE HORIZONTAL POSITION AND EXISTENCE OF UNDERGROUND UTILITIES. THESE FIELD LOCATED UTILITIES ARE SURVEYED.

QUALITY LEVEL C (QC) IS THE SURVEYING OF ABOVE GROUND UTILITY SURFACE FEATURES SUCH AS VALVES, METERS, ETC. ALONG WITH OBTAINING INFORMATION OF THE UTILITIES FROM THE UTILITY RECORDS.

QUALITY LEVEL D (QD) THIS INFORMATION IS OBTAINED ONLY FROM EXISTING UTILITY RECORDS.

THE EQB IS PLACED AT THE END OF A LINE WHERE ELECTRONICALLY A UTILITY CAN NO LONGER BE FOLLOWED. COMMONLY, THE MAPPING WHERE A UTILITY CHANGES MATERIAL FROM CONDUCTIVE TO NON-CONDUCTIVE OR WHERE A UTILITY IS SUSPECTED TO END (STUB, BUT NO RECORDS EXIST TO PROVE IT).

inframap UTILITY LOCATORS
SURVEYORS
CONSULTING ENGINEERS

10365 CEDAR LANE, GLEN ALLEN, VIRGINIA 23059
(804)550-2937 (800)863-3748 FAX (804)550-3296

RECOMMENDED FOR APPROVAL	DESIGN ENGINEER	DATE
DESIGNATED: JY	06-29-23	DRAWN: SPC 08-02-23
CHECKED: SE	08-03-23	CHECKED: NP 08-07-23

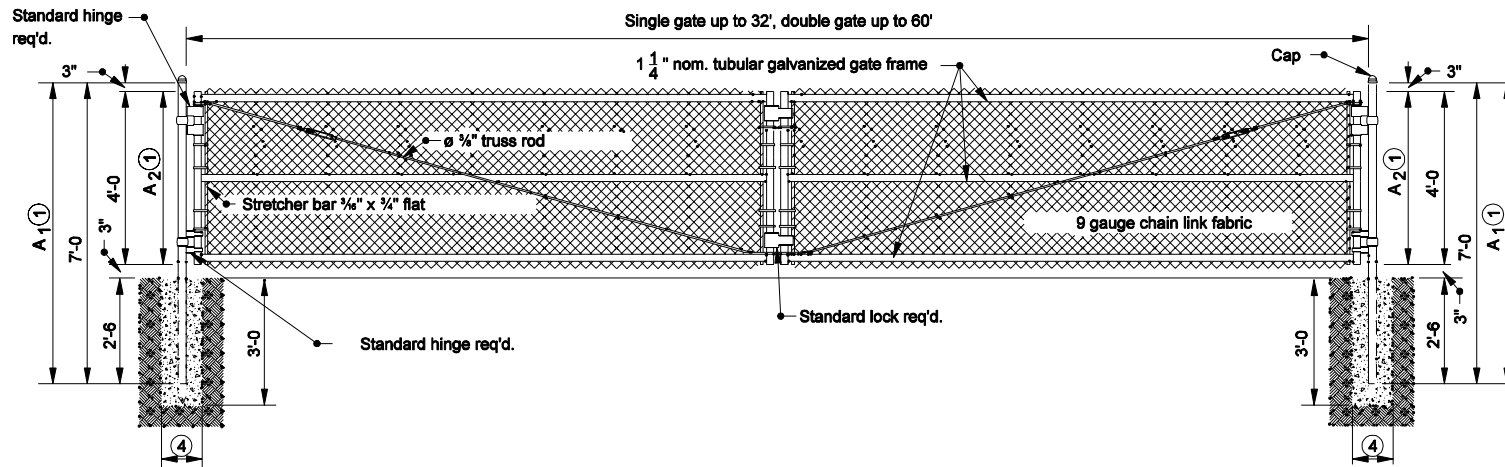
INDIANA DEPARTMENT OF TRANSPORTATION

SUBSURFACE UTILITY ENGINEERING PLAN
SMALL STRUCTURE REPLACEMENT
ON PARK/SERVICE ROAD

HORIZONTAL SCALE	BRIDGE FILE
1" = 20'	DESIGNATION
	2200177
	SHEETS
	2 of 2
CONTRACT	PROJECT
	I123002

ATTACHMENT 2

Chain Link Gate (INDOT Standard Drawing E 603-CLTF-03)



CHAIN LINK GATE

GENERAL NOTES

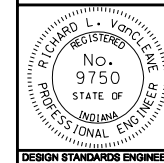
- ① For each additional 1'-0 in height increase dimension A₁ and A₂ by 1'-0.
2. See Standard Drawing E 603-CLTF-01 for the tubular post chart.
3. Dimensions as shown are for 4'-0 fence.
- ④ Diameter equals 10" plus the outside diameter of the post.

INDIANA DEPARTMENT OF TRANSPORTATION

CHAIN LINK TYPE GATE

SEPTEMBER 2004

STANDARD DRAWING NO. E 603-CLTF-03



/s/ Richard L. VanCleave 9-01-04
DESIGN STANDARDS ENGINEER DATE

/s/ Richard K. Smutzer 9-01-04
CHIEF HIGHWAY ENGINEER DATE

DESIGN STANDARDS ENGINEER

ATTACHMENT 3
Pre-Bid Meeting Minutes

Minutes

IDNR Project ENG2403734214
Pre-Bid Meeting
Culvert Replacement / Repair
September 29, 2025, 11:00 A.M. EST

MEETING SCHEDULE / LOCATION

Project Site, Ouabache State Park Office
4930 State Road 316, Bluffton, IN 46714

Meeting Minutes (10/7/25) in Italic

I. Introductions: Please Sign-in Sheet for the meeting record. *Gary Mroczka welcomed all the attendees to the meeting.*

II. Bid Schedule:

1. Bids due by October 16, 2025, 1:31 PM
2. Project goal of 7% MBE, 5% WBE and 3% IVOSB
3. Follow the Instructions to Bidders in the Specifications
4. Specified construction period is through June 5, 2026

John Spears stated that all RFIs are due to 10/5/25 so an Addendum will be sent to IDOA on 10/6/27 and issued on 10/7/25. If delay in the posting occurs by IDOA, John Spears or Gary Mroczka will share the Addendum directly with the attendees via email.

III. Specifications: See Section 01010 (Summary of Work) *Gary Mroczka presented the specifications below and the planned work at each culvert and the temporary access driveway.*

1. Lump Sum Bid / 2 Alternate Bids

This is a LUMP SUM project - where INDOT specifications are referenced in these project specifications, they are referenced for material identification and for means of execution, installation and construction. The Method of Measurement and Basis of Payment listed in the INDOT Specifications do not apply.

2. Base Bid: All work is on previously disturbed ground or has been cleared from an archaeological review. The proposed work has been reviewed and cleared by the Indiana Department of Natural Resources, Division of Historic Preservation and Archaeology (DHPA).

- a. The BASE BID includes the construction of Culverts 1, 2, 3 and 4 and the Placement of 8" Compacted Aggregate No. 53 on Geogrid Type IB as shown and detailed in the plans.

3. Alternates:

- a. ALTERNATE NO. 1 includes the placement of 165 lbs/syd HMA Surface Type B on 275 lbs HMA Intermediate Type B on 6" Compacted Aggregate No. 53 on Geogrid Type IB for the Temporary Park Access as shown and detailed in the plans.

- b. ALTERNATE NO. 2 includes the construction of Culverts 1, 2 and 3.

4. Proposed Base Bid Work:

- a. Temporary Park Access:

- i. Excavate to grade for temporary park access. Provide excavation or fill as needed to meet subgrade elevations as required.

- ii. Install geotextile and aggregate in areas for pavement for temporary park access. Compact and roll aggregate subgrade prior to HMA paving.
- iii. Place base over aggregate temporary park access (Alternate).
- iv. Prep tie in and new base for surface paving temporary park access (Alternate).
- v. Place surface and resurface paving temporary park access (Alternate).
- vi. Grade earthen shoulders or place existing aggregate to within 1 vertical inch of edge of pavement. Add fill or take excess spoil material to permitted spoil site. Stabilize disturbed areas with mulched seeding (shall be net free).
- vii. Install detour signage as per plan and cover until access road is open.

Gary Mroczka stated that IDNR understands that placement of bituminous materials may not be available due to seasonal temperatures until hot mix plants open for business in the spring. Therefore, the alternate bid for HMA over aggregate may be placed after 4/1/26. IDNR will evaluate once bids are known.

- b. Culvert #1: 14' Span x 5' Rise x 35' Long RCB, Sumped 1'
 - i. Culverts #1 and #2 may not be installed concurrently.
 - ii. Submit shop drawings to DESIGNER of Record for review and approval.
 - iii. Install temporary traffic control, erosion control measures, locate utilities (pothole utilities as necessary), etc.
 - iv. Remove culvert, prepare structural foundation, install culvert. Place structural backfill and borrow as needed per plan.
 - v. Install geotextile and aggregate in areas for pavement over culvert. Compact and roll aggregate subgrade prior to HMA paving. Place base and intermediate over culvert.
 - vi. Prep tie in and new base for surface paving. Place surface and resurface paving over culvert.
 - vii. Install scour protection.
 - viii. Grade earthen shoulders or place existing aggregate to within 1 vertical inch of edge of pavement. Stabilize disturbed areas with mulched seeding (shall be net free).
 - ix. Clean up, restore site, and removal of erosion control measures.

- c. Culvert #2: 10' Span x 4' Rise x 50' Long RCB, Sumped 6"
 - i. Culverts #1 and #2 may not be installed concurrently.
 - ii. Submit shop drawings to DESIGNER of Record for review and approval.

Install temporary traffic control, erosion control measures, locate utilities (pothole utilities as necessary), etc. *No Subsurface Utility Engineering data exists for this location for Bluffton Sanitary or Electric. The depths are expected to be below the structure and similar to Culvert #1.*

 - iii. Cut and remove existing fiber optic line as per plans. Install vaults and conduit as per plans. Install fiber optic cable and splice to existing cable at each end. Test for functionality. Cover with excavated material to rough finish grade. *The main fiber line supports the entire park and shall be coordinated with the Property Manager, Jon Winne prior to cutting. The fiber may be cut during the weekday and is expected to take three days to repair.*
 - iv. Remove Culvert, prepare structural foundation, install new culvert. Place structural backfill and borrow as needed per plan.
 - v. *Run existing clay tile that runs into the culvert out to the edge of the embankment as per plans. The tile may not run through the new structure.*
 - vi. Install geotextile and aggregate in areas for pavement over Culvert. Compact and roll aggregate subgrade prior to HMA paving. Place base and intermediate layers, prep tie in and new base for surface paving. Place surface and resurface paving over Culvert.
 - vii. Install scour protection.
 - viii. Grade earthen shoulders or place existing aggregate to within 1 vertical inch of edge of pavement. Add fill or take excess spoil material to permitted spoil site. Stabilize disturbed areas

- ix. Clean up, restore site, and removal of erosion control measures.
- d. Culvert #3:
- i. Install temporary traffic control, erosion control measures, locate utilities (pothole utilities as necessary), etc.
 - ii. Cut and remove existing fiber optic cable as per plans. Install vaults and conduit as per plans. Install fiber optic cable and splice to existing cable at each end. Test for functionality. Cover with excavated material to rough finish grade. *The fiber line supports a portion of the park and is less critical but shall be coordinated with the Property Manager, Jon Winne prior to cutting.*
 - iii. Remove parapet, wingwall and spandrel wall stones with hand tools. If power tools, such as grinders, will be used to remove the stones, the CONTRACTOR shall demonstrate the ability to use the tools without damaging the masonry as a test panel before starting work on the entire structure.
 - iv. Remove and clean old grout and set aside on site. Masonry cleaning must follow the guidance provided in Preservation Brief #1, which is published by the National Park Service and available at <https://www.nps.gov/orgs/1739/preservation-briefs.htm>.
 - v. Remove partial Culvert as per plans and dispose material to permitted site.
 - vi. Perform underpinning of existing concrete footing. Install partial structure. Place structural backfill and borrow as needed per plan.
 - vii. Place base and intermediate over Culvert. Prep tie in and new base for surface paving. Install geotextile and aggregate in areas for pavement over Culvert. Compact and roll aggregate subgrade prior to HMA paving. Place surface and resurface paving over Culvert.
 - viii. Adhere stones to concrete with grout or adhesive to headwall and wingwall faces. *Excess stone can be stored at the park and shall be coordinated with the Property Manager, Jon Winne in advance.*
 - ix. Install scour protection.
 - x. Grade earthen shoulders or place existing aggregate to within 1 vertical inch of edge of pavement. Add fill or take excess spoil material to permitted spoil site. Stabilize disturbed areas with mulched seeding (shall be net free).
 - xi. Clean up, restore site, and removal of erosion control measures.
- e. Culvert #4: 42" HDPE Smooth Liner, 40' Long
- i. Install temporary traffic control, erosion control measures, locate utilities, etc.
 - ii. Clean inside of culvert. Install liner as per plans.
 - iii. Install scour protection.
 - iv. Clean-up and restore site.
 - v. Remove all Maintenance of Traffic Items.
 - vi. Perform all punch list items.

IV. Anticipated Project Schedule / Completion of Work:

1. Work is anticipated to start by 12/1/2025 *pending notice to proceed, whichever is later.*
2. Tree Clearing may occur between 12/1/2025 to 3/31/2026.
3. Construction activities which close the Main Park Entrance Road (Old State Route 201) at Culverts #1 or #2 may not start until after the Temporary Access Road is open to traffic.
4. Culverts #1 and #2 shall be installed between 1/1/2026 and 4/1/2026.
5. Work shall be substantially completed on Culverts #1 and #2 and the Park Entrance Road (Old State Route 201) open to traffic by 4/1/2026. Culverts #1 and #2 shall not be constructed concurrently.
6. Project completion by 6/5/2026.
7. All work required by the Contract Documents shall be completed within the timeframe specified in the Contract. *Weekend work is okay and is preferred to coordinate with Property Manager, Jon Winne in*

advance.

V. Notables:

1. The Contractor will provide a 1-year warranty on the work.
2. Contractor shall perform all construction activity between sunrise and sunset and shall not be performed on Saturdays, Sundays, or during the period beginning at 12:00 noon on the last weekday (Monday through Friday) proceeding and continuing until Sunrise on the day following Christmas, New Year's Day, and Memorial Day unless previous arrangements are made with the Owner.
Weekend work is acceptable but requires advance coordination with the Project Engineer and Property Manager.
3. All Waterway Permits have been received. All of the USACE 404 Nationwide Permit / IDEM Section 401 General Water Quality Certification expire 3/16/2026. No additional conditions.
Gary Mroccka stated that all permits have been received and a copy of each will be provided to the Contractor at the Pre-Construction Meeting.

VI. Questions: *No additional questions prior to the site visit.*

VII. Site Visit to each Culvert: *Tree clearing has been completed by IDNR.*

a. *Culvert 1:*

- i. *Contractors requested any x, y and z information for the utilities near the structure. Gary stated that some subsurface utility engineering data exists and will be shared.*
- ii. *Question raised if there are any wingwalls or railing as part of the proposed design. Currently none are planned.*

b. *Culvert 2:*

- i. *Contractors requested if there is any location information for the utilities near the structure. Gary stated that some subsurface utility engineering data exists and will be shared.*

c. *Culvert 3:*

- i. *Question was raised if a precast concrete arch could replace the proposed corrugated metal box. Gary Mroccka stated that since the existing concrete foundations are being repaired and reused, that a precast concrete structure portion would likely overstress the concrete foundations and the current proposed structure shall remain.*

d. *Culvert #4: No questions.*

e. *No remediation allowance for this project.*

Attachments:

1. *Pre-Bid Meeting Sign-in Sheet*

Pre-Construction Meeting

Culvert Replacement / Repair, ENG2403734214

September 29th, 2025 – 11:00am

Ouabache State Park Office, Bluffton, IN

Representative	Company	Phone	E-Mail
Gary Mroczka	AECOM	317-479-6057	gary.mroczka@aecom.com
TJ Morgan	HIS / BRER	317 284 1195	tj.morgan@hisconstructors.com
John Spears	DNR	615-946-6320	jspears@dnr.in.gov
RANDALL CRAVEN	DNR	317-605-1983	RCRAVEN@dnr.IN.GOV
Jon Winne	DNR	260-824-0926	jwinne@dnr.IN.gov
Jacob Blackburn	Milestone	260-706-1430	jablackburn@milestonelp.com
Joe Thomas	Milestone	260-413-8386	JoeThomas@milestoneLP.com
Greg Peterson	E & B Paving	765-513-0187	greg.peterson@ebpaving.com
NICKY KEE	DNR	(219) 214 2016	NAEA_1@DNR.IN.GOV