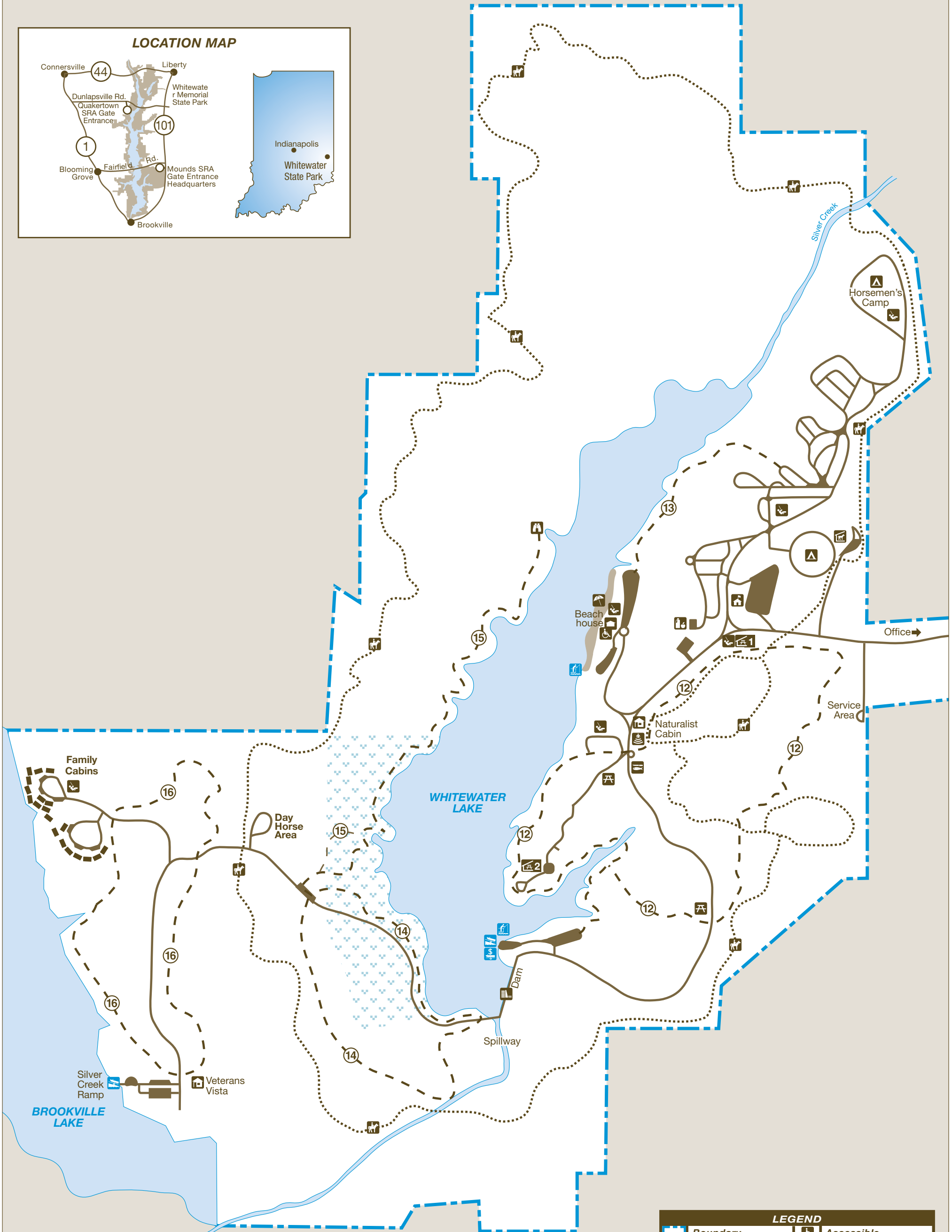
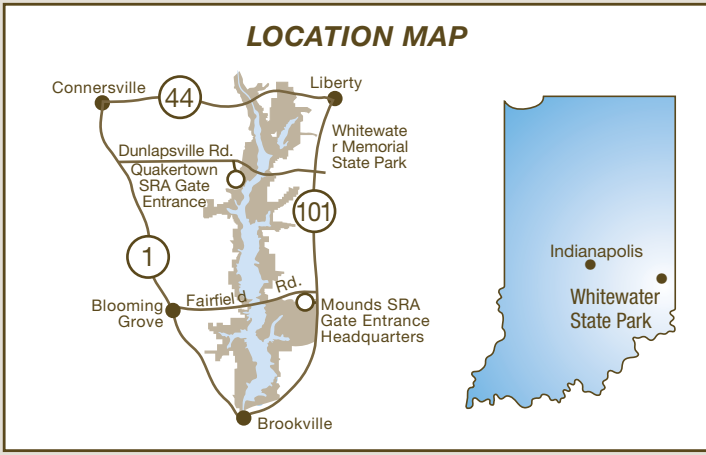


WHITEWATER MEMORIAL STATE PARK

1418 S. State Road 101 • Liberty, Indiana 47353 • (765) 458-5565
 1,710 Acres 180 Acre Lake Established 1949



Printed on Recycled Paper

RECYCLE
 Place used beverage cans in the park's marked recycling containers. Thank you.

CARRY IN / CARRY OUT
 Please carry out all trash you produce in order to keep your park clean and beautiful for others to enjoy.



| SHELTERHOUSE | |
|--------------|--------|
| # | NAME |
| 1 | Poplar |
| 2 | South |

| WHITEWATER MEMORIAL TRAIL TABLE | | | |
|---------------------------------|------------------|-----------|----------|
| # | TRAIL NAME | INTENSITY | MILEAGE |
| 12 | Memorial Loop | Moderate | 2.5 |
| 13 | Cattail Alley | Moderate | 1 |
| 14 | Red Springs Loop | Rugged | 1.2 |
| 15 | Lakeshore | Moderate | 2.7 / .5 |
| 16 | Veterans Vista | Moderate | 2 |
| | Bridle Trails | | 9 |

| LEGEND | | | |
|--------|-------------------|--|--------------------|
| | Boundary | | Accessible |
| | Road | | Campground |
| | Hiking Trail | | Playground |
| | Horse Trail | | Camp Store |
| | Hornbeam NP | | Picnic Area |
| | Point of Interest | | Picnic Shelter |
| | Boat Rental | | Amphitheater |
| | Boat Launch | | Fish Cleaning |
| | Fishing Pier | | Horse Stable |
| | Wildlife Viewing | | Beach |
| | Restrooms | | Information/Office |

THIS IS YOUR PARK

Visitors shall observe the rules, which are designed to fulfill the purpose for which state parks were established, namely, to preserve a primitive landscape in its natural condition for the public's use and enjoyment.

DNR PROPERTIES NEARBY

Pick up an *Indiana Recreation Guide* for more information.

- **Brookville Lake**—Hiking Trails, Wildlife Viewing, Interpretive Services, Playgrounds, Fishing, Dog Training area, Trapping, Archery Range, Shooting Range, Shelterhouses, Picnic Areas, Swimming, Water Skiing, Boating, Camping
- **Summit Lake State Park**—Hiking Trails, Wildlife Viewing, Interpretive Services, Playgrounds, Fishing, Shelterhouses, Swimming, Boating, Camping
- **Shrader-Weaver Nature Preserve**—Hiking trails, Wildlife viewing, Bird Watching, parking

Please let wild animals remain wild.

Feeding wildlife is prohibited. Feeding of wild animals can result in harm to both animals and people. Animals who depend on handouts become a nuisance to visitors and a danger to themselves. Please lock up all food and coolers inside cars or campers. Roll up car windows tightly.

RULES AND REGULATIONS

- No one shall injure or damage any structure, rock, tree, flower, bird or wild animal. Do NOT gather limbs, brush or trees (either dead or alive) for firewood because they rebuild the natural humus.
- Firearms—Except lawfully possessed handguns, any firearm, BB gun, air gun, CO₂ gun, bow and arrow, paint gun or spear gun must be unloaded or un-nocked and stored in a case or locked within a vehicle, except when an owner is participating in an activity authorized by written permit.
- No person shall conduct or participate in a fishing tournament on a reservoir property administered by the Division of State Parks except under a license.
- No person shall launch, dock, or moor a watercraft or other floating device, except during approved periods and at sites designated by the department for those purposes. No person shall leave watercraft unattended in a courtesy dock.
- A person who possesses a pet must attend it at all times and keep the animal caged or on a leash no more than 6 feet long, except when used for the lawful pursuit of wild animals.
- Vending or advertising without permission of the DNR is prohibited.
- Camping is permitted only in the campground. Youth groups must be under adult supervision. No lakeshore camping.
- Fires shall be built only in designated places.
- Please comply with the Carry In/Carry Out trash policy in all day-use areas. Overnight guests must put waste in receptacles provided for that purpose.
- Motorists shall observe posted speed limits and park only in designated areas.
- Swimming is limited to places and times designated by the DNR.
- No person shall possess or consume alcoholic beverages at a swimming beach.
- Drinking water should be taken only from pumps, hydrants or fountains provided for that purpose. This water is tested regularly for purity.
- Report lost or found articles to the park office.
- All motorized vehicles shall remain on paved roadway. Snowmobiles are prohibited.
- Metal detectors are allowed on main beach between Labor Day and Memorial Day with written permission from the property manager.
- Park closes from 11 p.m. until 7 a.m. No one is allowed in the park between these hours, except for anglers, campers and cabin guests with a receipt or key, using their sites.

For a complete list of rules and regulations, inquire at park office.

DESCRIPTION OF TRAILS

| TRAIL & DESCRIPTION | DISTANCE | DIFFICULTY |
|---|-----------|------------|
| Memorial Trail | 2.5 miles | Moderate |
| Easily accessed from many different locations. Travels eastern shore of Whitewater Lake through variety of forest types. | | |
| Cattail Trail | 1 mile | Moderate |
| Accesses family campground to beach area of Whitewater Lake. Northwest end is marked by acres of cattails, providing habitat for many species of waterfowl and other birds. | | |
| Red Springs Loop | 1.2 miles | Rugged |
| Loop trail can be accessed from spillway or Nature Preserve parking lots. Majority of trail meanders through Hornbeam Nature Preserve and past large hillside seep springs that leave minerals and iron deposits, casting a rusty color over surface water. Wonderful trail for spring wildflowers. | | |
| Lakeshore Trail | 2.7 miles | Moderate |
| The short loop and longest trail starts and ends at Hornbeam Nature Preserve parking lot, traversing hills and valleys of beautiful hardwoods along Whitewater Lake's western shore. Half-mile short loop is at beginning—watch for wooden signs. Long trail turns around at wooden steps and observation deck. | | |
| Veterans Vista Loop | 2 miles | Moderate |
| This trail offers a spectacular view of Brookville Lake, winding through fields and forests in the Silver Creek and Family Cabin areas. | | |
| Bridle Trails | 9 miles | |
| A large loop trail traverses the edge of the property and can be accessed from day Horsemen's Area or Horsemen's Campground. Saddle barn trail is exclusively for saddle barn patrons. | | |

PLEASE STAY ON MARKED TRAILS.

HORSES MUST STAY ON DESIGNATED TRAILS AT ALL TIMES

ACTIVITIES AND FACILITIES

ACCESS TO BROOKVILLE LAKE—Launch ramp at Silver Creek allows access to Brookville Lake from March 1 through Oct. 1.

BOATING ON WHITEWATER LAKE—Whitewater Lake (180 acres) is restricted to trolling-motor use only. Seasonal canoe, kayak, rowboat and paddle-boat rentals are available.

CAMPING—Electric and non-electric sites with modern restrooms and showers are available. Horsemen's electric and primitive and Youth Tent primitive sites with pit toilets are available. Potable water and dump stations available to all. Occupancy is limited to 14 consecutive nights. All sites are reservable. Reservations available through the Central Reservation System.

FAMILY CABINS—Twenty modern cabins available year-round. Guests furnish own linens. These are housekeeping cabins that renter must clean and leave ready for next occupants. Maximum is six persons per cabin. Occupancy is limited to 14 consecutive nights. Two of the cabins are accessible; the others are not. Five of the cabins allow pets; the others do not. All cabins are non-smoking. Must be 21 to rent a cabin. Reservations available through the Central Reservation System.

FISHING—Bass, bluegill, crappie, redear, channel catfish. State fishing license is required.

HIKING—Nine miles of hiking trails ranging from easy to rugged.

HORSES—Seasonal guided trail rides available from concessionaire saddle barn. Nine miles of bridle trails available for day horse riders or horse campers.

INTERPRETIVE NATURALIST SERVICE—Hikes, talks and other fun programs are available from Memorial Day to Labor Day. Program schedules available at InterpretiveServices.IN.gov or by asking for a schedule of events.

PICNIC AREAS—Tables, grills, toilet facilities, playground equipment and playfields.

SWIMMING—The beach house and beach are open from Memorial Day to Labor Day.

CENTRAL RESERVATION SYSTEM



Reservations for all types of camping, family cabins, and shelters at state parks, reservoirs and forests can be made online or by calling toll-free. Call: **1-866-6campIN** (1-866-622-6746) Online: **camp.IN.gov**

Reservations for the Indiana State Park Inns and Inn-operated cabins can be made online or by phone. Call: **1-877-lodges1** (1-877-563-4371) Online: **Indianalnns.com**

FOR MORE INFORMATION



Write: Whitewater Memorial State Park
1418 S. State Road 101
Liberty, IN 47353
Call: 765-458-5565
Online: on.IN.gov/whitewatermemorialsp

SPECIAL NOTE

Receipts from admission and service charges are used to help defray the operation and maintenance costs of the park. List of fees available in the main office.



Please carry out all trash you produce in order to keep your park clean and beautiful for others to enjoy!

[@INDnrstateparksandreservoirs](https://www.facebook.com/INDnrstateparksandreservoirs) [@indianadnr](https://www.instagram.com/indianadnr) [@INDNRstateparks](https://twitter.com/INDNRstateparks)

See everything Indiana State Parks has to offer at stateparks.IN.gov.

OUTDOOR INDIANA Subscribe to Outdoor Indiana magazine today, Visit OutdoorIndiana.org or call 317-233-3046.

The programs, services, facilities, and activities of the Indiana Department of Natural Resources are available to everyone. DNR prohibits discrimination on the basis of race, color, national origin, age, sex, or disability. If you believe that you have been discriminated against in any program, activity, or facility as described above, or if you desire further information please write to: Department of Natural Resources, Executive Office, 402 W. Washington Street, W256, Indianapolis, IN 46204, (317) 232-4020.

DNR Indiana Department of Natural Resources

INDIANA

WHITEWATER
MEMORIAL
STATE PARK



on.IN.gov/stateparks

Whitewater Memorial State Park was established in 1949 as a living memorial to the men and women who served in World War II. It is the result of a community effort in which Fayette, Franklin, Union and Wayne counties joined together to acquire the initial acreage, which includes wooded rolling hills, steep ridges and ravines, in addition to level, open fields and a man-made lake.

Hornbeam Nature Preserve, within the park, includes an unusual number of hornbeam and hop hornbeam trees. In spring, the forest is covered with a dense carpet of wildflowers.

For a list of park events, visit interpretiveservices.IN.gov