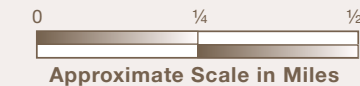
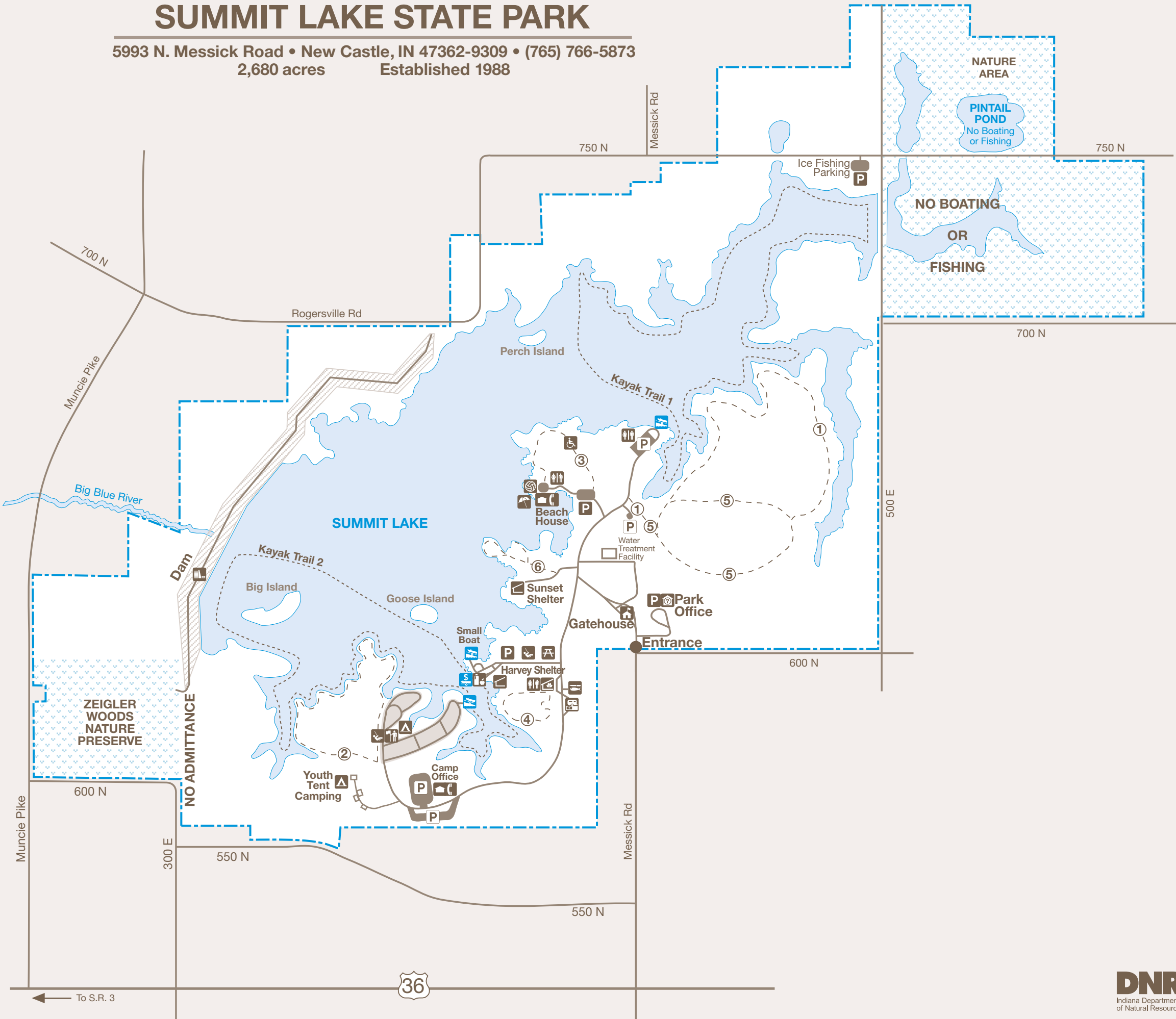


SUMMIT LAKE STATE PARK

5993 N. Messick Road • New Castle, IN 47362-9309 • (765) 766-5873
2,680 acres Established 1988



TRAIL TABLE		
TRAIL	MILES	TRAIL TYPE
1 Prairie	1.75	Moderate
2 Campground	1.25	Moderate
3 Beach	0.9	Accessible
4 Self-guided	0.75	Moderate
5 Upland Forest	1.25	Moderate
6 Sunset	0.5	Easy



LEGEND			
	Boundary		Accessible
	Road		Campground
	Hiking Trail		Telephone
	Nature Preserve		Fish Cleaning Station
	Boat Launch		Shelter
	Boat Rental		Dump Station
	Parking		Gatehouse
	Park Office		Picnic Area
	Volleyball Pit		Naturalist Office
	Beach		Naturalist Site
	Playground		Campstore
	Restroom		Dam

CARRY IN CARRY OUT

Please carry out all trash you produce in order to keep your park clean and beautiful for others to enjoy.

RECYCLE

Place used beverage cans in the park's marked recycling containers. Thank you.

County residents began to talk of having a recreational facility close to home. By 1966 the Big Blue River Conservancy District started to make that dream reality. The group’s goals included flood control along the river and waterway improvement, in addition to a recreational facility.

Construction of the flood-control structure at the headwaters of the Big Blue River that created Summit Lake began in the mid-1970s. When the gates of the dam closed in 1980, the man-made lake began to fill. In 1988, after several years of planning and construction, the Big Blue River Recreation Area was sold to the state of Indiana and became Summit Lake State Park. The name comes from being located at the highest elevation in the surrounding area and near the highest elevation in the state.

Present-day visitors will find an array of habitats at Summit Lake. Historically, the area was primarily forested. J. Hendricks, surveyor, wrote in 1821 that the area in the western portion of the park was prairie and wet prairie lands. Located just north of the town of New Castle and U.S. 36, the combination of the 800-acre lake, woodlands, old fields, wetlands and prairie restoration areas at the state park allows for an abundant array of flora and fauna species.

Bird watchers will be especially delighted to find the variety of interesting bird species reported during the migratory seasons as well as resident species. Some unusual bird species that have been observed include the marsh wren, least bittern, American bittern, king rail, osprey, bald eagle, black tern and great egret.

Summit Lake State Park is also the home of Henry County’s only dedicated nature preserve, Zeigler Woods, which is located in the southwest corner of the park. Given to the state by The Nature Conservancy, the preserve is reflective of pre-settlement Indiana’s native mesic upland forest communities. Zeigler Woods presents a rich exhibit of flora and fauna with little evidence of human disturbance. Unfortunately, such areas are becoming increasingly rare.

DNR PROPERTIES NEARBY

- Wilbur Wright Fish and Wildlife Area**-dog training areas, fishing, hunting, target ranges, trapping, wildlife watching
- Mounds State Park**-camping, fishing, hiking trails, interpretive services & center, historic features, picnic area, play/sports area, shelter house, swimming pool, youth tent areas
- Shrader-Weaver Nature Preserve**-hiking trails, parking

Pick up an Indiana Recreation Guide for more information.

ACTIVITIES AND FACILITIES

BOAT LAUNCH—Privately owned boats may be launched. A launch permit is required to launch private boats. Electric trolling motors, powered by no more than two 12-volt batteries, are allowed. Outboard motors are permitted to operate at idle speed only.

BOAT RENTAL—Rowboats, paddle boats, kayaks and canoes are available by the hour or day.

CAMPING—All sites are electric. Campground is equipped with flush toilets, hot water and showers. Occupancy is limited to 14 consecutive nights. Sites will accommodate trailers. Reserve through the Central Reservation System.

CONCESSIONS—Located at the beach.

FISHING—Fishing is allowed away from the beach area. A state fishing license is required. No fishing on beach when beach ropes are in place.

HIKING—Easy-to-moderate marked trails are available for hiking all year.

INTERPRETIVE NATURALIST SERVICE—A seasonal naturalist is available from mid-May through Labor Day. Naturalist programming offered includes the Hoosier Quest outdoor adventure program. Additionally, cultural arts activities are scheduled for many summer weekends. Additional information may be obtained by visiting InterpretiveServices.IN.gov or (765) 766-5873.

PICNIC AREAS—Tables, grills, restrooms and playground are available.

SHELTER HOUSE—Reservations for the Harvey and Sunset shelters are available through the Central Reservation System.

SWIMMING—Swimming is permitted sunup to sundown, Memorial Day weekend to Labor Day. There is no charge for swimming. The beach house and beach open the Saturday before Memorial Day and operate no later than Labor Day.

RULES AND REGULATIONS

- Do not injure or damage any structure, rock, tree, flower, bird or wild animal within the park. Do NOT gather limbs, brush or trees (either dead or alive) for firewood because it rebuilds the natural humus.
- Any firearm (except lawfully possessed handguns), BB gun, air gun, CO₂ gun, bow and arrow, paint gun or spear gun in possession in a state park must be unloaded or un-nocked and stored in a case or locked within a vehicle, except when owner is participating in an activity authorized by written permit.
- Dogs and cats must be attended at all times and kept on a leash no longer than 6 feet.
- Vending or advertising without permission of the Department of Natural Resources is prohibited.
- Camping is permitted only in the campground. Youth groups must be under adult supervision.
- Fires are permitted only in designated fire rings and grills. Do not move fire rings.
- Please comply with the Carry In/Carry Out trash policy in all day-use areas. Overnight guests must put waste in receptacles provided for that purpose.
- Motorists shall observe posted speed limits and park only in designated areas.
- Swimming is permitted at the swimming area on the beach from dawn until dusk. Open the Saturday before Memorial Day through Labor Day.
- Drinking water should be taken only from pumps, hydrants or fountains provided for that purpose. This water is tested regularly for purity.
- Report lost or found articles to the park office.
- All motorized vehicles shall remain on paved roadway. Snowmobiles are prohibited.
- Use of metal detectors is only allowed on the beach sand from the day after Labor Day to the Saturday before Memorial Day with permit.
- Park closes from 11 p.m. until 7 a.m. No one is allowed in the park when closed, except campers using their sites.
- Outboard motors may be operated at idle speed only.

For a complete list of rules and regulations, visit the property office or go online at:
on.IN.gov/INStateParksRules

CENTRAL RESERVATION SYSTEM



Reservations for all types of camping, family cabins, and shelters at state parks, reservoirs and forests can be made online or by calling toll-free.
Call: **1-866-6campIN** (1-866-622-6746)
Online: **camp.IN.gov**

Reservations for the Indiana State Park Inns and Inn-operated cabins can be made online or by phone.
Call: **1-877-lodges1** (1-877-563-4371)
Online: **IndianalInns.com**

FOR MORE INFORMATION

Write: Summit Lake State Park
5993 N. Messick Rd.
New Castle, IN 47362-9309
Call: 765-766-5873
Online: on.IN.gov/summitlakesp



Please carry out all trash you produce to help keep the property clean and beautiful for all to enjoy!

FOLLOW US



OUTDOOR INDIANA Subscribe to Outdoor Indiana magazine today, Visit **OutdoorIndiana.org** or call 317-233-3046.

The programs, services, facilities, and activities of the Indiana Department of Natural Resources are available to everyone. DNR prohibits discrimination on the basis of race, color, national origin, age, sex, or disability. If you believe that you have been discriminated against in any program, activity, or facility as described above, or if you desire further information please write to: Department of Natural Resources, Executive Office, 402 W. Washington Street, W256, Indianapolis, IN 46204, (317) 232-4020.

DESCRIPTION OF HIKING TRAILS

TRAIL & DESCRIPTION	DISTANCE	DIFFICULTY
1. Prairie Trail	1.75 mi.	Moderate
This trail traverses open, rolling established prairie with views of the lake. The prairie is comprised of Indiana Grass, cream wild indigo, shooting star, rattlesnake master and several other natural grasses and forbs.		
2. Campground Trail	1.25 mi.	Moderate
Starts in the small oak-hickory woods, with a glacial depression that stays wet year-round. The trail then goes through some scrub growth on the edge of the fields, then into open fields across rolling terrain, with excellent views of the lake.		
3. Beach Trail	0.9 mi.	Easy

ADA accessible. Trail has a firm and stable surface with less than 2% cross-slopes, grades no greater than 5% and widths no less than 60 inches. The trail starts in a small wooded lot. The remainder is mostly open, with views of the lake across rolling topography.

4. Self-Guided Nature Trail	0.75 mi.	Moderate
The trail begins in a field of prairie grasses punctuated with the bright colors of wildflowers in the summer. It winds through a meadow with young tulip trees, second-growth shrubs and a wet area with a short boardwalk. The trail ends with a scenic view of the lake. Hikers may see waterfowl, swallows and other water-loving birds.		
5. Mesic Upland Forest Trail	1.25 mi.	Moderate
Starts in the open but soon enters the largest wooded lot in the park,with areas of oak-hickory mixed with cherry, ash and areas of beech-maple mix. The topography includes uplands and low glacial depressions. The remainder of the trail coincides with trail 1-Prairie Trail for a view of Indiana native wildflowers and grasses.		
6. Sunset Trail	0.5 mi.	Easy

This partially shaded trail leads visitors through shrub swamp to beautiful views of the lake. Hikers may see the Tricolored Heron, Osprey, Eagles or White Pelicans.

DESCRIPTION OF KAYAK TRAILS

TRAIL & DESCRIPTION	DISTANCE
1. Kayak Trail #1	3.25 mi.
From the north loop kayak launch, this self-guided scenic route starts by following a small cove where great blue herons wade. Later, it goes by the park’s only eagle nest. Other seasonal focal points include lotus blossoms and white pelican and double-crested cormorant roosting areas.	
2. Kayak Trail #2	3.25 mi.

From the south ramp kayak launch or boat rental, this self-guided route goes by inner coves where wading birds, migratory waterfowl, and black vultures roost, as well as the only osprey nest in Henry County.

PLEASE STAY ON MARKED TRAILS.

INDIANA

on.IN.gov/stateparks

DNR Indiana Department of Natural Resources

SUMMIT LAKE STATE PARK

Anglers, swimmers, bird watchers and wildlife photographers are among the many admirers of Summit Lake State Park. The 2,680 acres, including an 800-acre lake, shady wooded areas, and lots of open space, serves as home for many woodland animals and more than 100 species of birds.

Fish—and fishermen—love it, too. Bass, sunfish, crappies, yellow perch and channel catfish abound.

Boat rentals include paddleboats, rowboats, kayaks and canoes. Guests can also launch their own craft at one of three boat ramps. The large swimming beach is open from Memorial Day to Labor Day. A modern bathhouse and concession building, including restrooms, is located at the beach.

Six hiking trails offer a good view of the lake. All campsites are 50/30/20 amp electric with water hookups.

Summit Lake became Indiana’s 19th state park on Jan. 9, 1988, but its history traces back to the 1950s, when Henry

For a full list of events, visit interpretiveservices.IN.gov